

Data Sheet | Item Number: 284-345

Step-down cover plate; 1 mm thick; for 4-conductor 280-633 terminal blocks; orange

<https://www.wago.com/284-345>



Color: ■ orange

Similar to illustration

Physical data

Width	1 mm / 0.039 inches
Height	79 mm / 3.11 inches
Depth	26.5 mm / 1.043 inches

Material data

Note (material data)	Information on material specifications can be found here
Color	orange
Material group	I
Insulation material (main housing)	Polyamide (PA66)
Flammability class per UL94	V0
Fire load	0.056 MJ
Weight	1.9 g

Commercial data

Product Group	1 (Rail Mounted Terminal Blocks)
PU (SPU)	100 (25) pcs
Packaging type	Box
Country of origin	CN
GTIN	4017332195942
Customs tariff number	85389099990

Product Classification

UNSPSC	39121421
eCl@ss 10.0	27-14-11-33
eCl@ss 9.0	27-14-11-33
ETIM 9.0	EC000886
ETIM 10.0	EC000886
ECCN	NO US CLASSIFICATION

Environmental Product Compliance

RoHS Compliance Status	Compliant, No Exemption
------------------------	-------------------------

Downloads

Environmental Product Compliance

Compliance Search

Environmental Product Compliance 284-345	↓
--	---

CAD/CAE-Data

CAD data

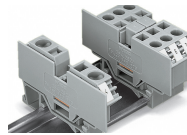
2D/3D Models 284-345	↓
----------------------	---

CAE data

EPLAN Data Portal 284-345	↓
WSCAD Universe 284-345	↓
ZUKEN Portal 284-345	↓

Installation Notes

Installation



Snapping a cover plate onto open side of terminal block.

A cover plate must also be snapped onto the other side of the larger terminal block.