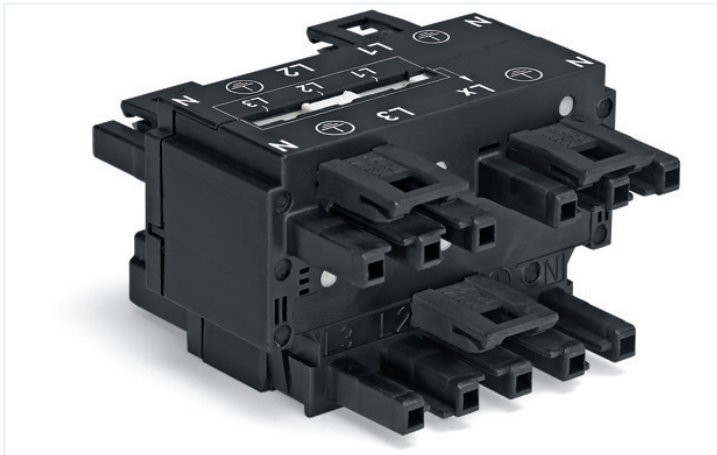


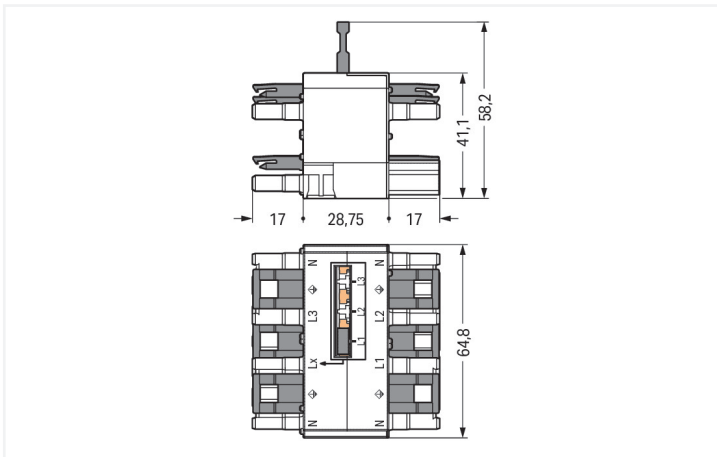
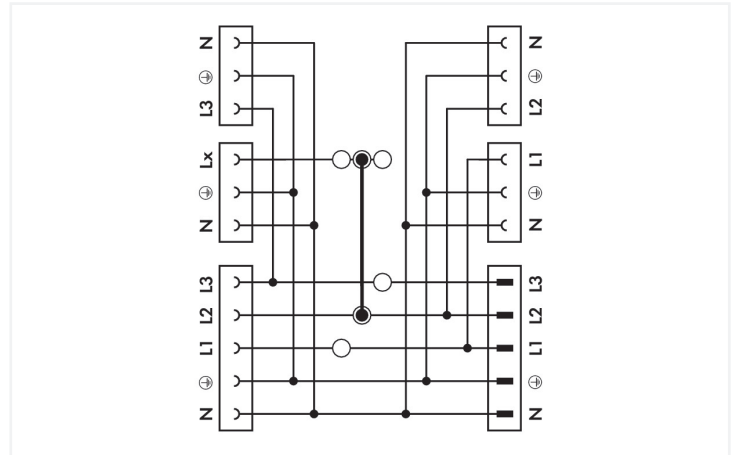
Data Sheet | Item Number: 770-640

Three-phase to single-phase distribution connector; with phase selection; 5-pole/3-pole; Cod. A; 1 input; 5 outputs; black

<https://www.wago.com/770-640>



Color: ■ black



Dimensions in mm

Distribution connector WINSTA® MIDI with protection against mismating

Use effective pluggable connections instead of laborious screw connections: With the WINSTA® MIDI distribution connector with protection type IP20. On PCBs, in control cabinets or for connecting lights – pluggable installation connectors from WAGO allow you to make connections according to an enormous variety of requirements in seconds. The coding options reduce installation errors, allowing fast, secure wiring of all components. The pluggable installation connector is protected against ingress by solid objects in accordance with protection type IP20 (When mated: IP2xC (These compact connectors are not designed for use in open, easily accessible areas!)). General mains applications for almost any domain of use can be implemented with WINSTA® MIDI pluggable installation connectors with A coding. This pluggable installation connector can be used for a load of up to 25 A. As a result, it can also be used for high power loads. The WINSTA® MIDI product line guarantees total flexibility for the installation. With its Push-in CAGE CLAMP® spring pressure connection technology, it ensures time-saving, error-free installation and offers customization and flexibility for meeting an enormous variety of installation requirements.

WINSTA® MIDI solutions for your electrical installation – protected against mismating and maintenance-free

The WINSTA® Pluggable Connection System allows pluggable electrical installation. This saves time, lowers costs, and reduces the need for servicing. Choose quality and durability – with protection against mismating from WAGO makes the installation of electrical components significantly easier.

- effective protection against mismating
- simple circuits
- with A coding for a large number of applications
- custom-engineered solutions
- convenient installation and commissioning



Electrical data				
Ratings per		IEC/EN 60664-1		
Overvoltage category		III	III	II
Pollution degree		3	2	2
Nominal voltage		400 V	-	-
Rated surge voltage		6 kV	-	-
Rated current		25 A	-	-

Ratings per IEC/EN 2	
Rated voltage (III/3) 2	250 V
Rated surge voltage (III/3) 2	4 kV

Approvals per		UL 1977
Rated voltage		600 V
Rated current		23 A

General information	
Note on contact resistance	approx. 1 mΩ of contact resistance approx. 0.25 mΩ contact transition plug/ socket

Connection data	
Total number of potentials	5

Connection 1	
Pole number	5

Physical data	
Pin spacing	10 mm / 0.394 inches
Width	64.8 mm / 2.551 inches
Height	58.2 mm / 2.291 inches
Depth	62.75 mm / 2.47 inches

Mechanical data	
Application	General mains applications
Coding	A
Marking	N L1 L2 L3
Mating force of a plug-in connection	Approx. 20 ... 70 N (depending on pole number)
Retention force of a plug-in connection	When locked: > 80 N
Unmating force of a plug-in connection	Unlocked: approx. 20 ... 70 N (depending on pole number)
Number of mating cycles	200, without resistive load
Type of distribution box	Three-phase to single-phase distribution connector
Protection type	IP20; When mated: IP2xC (These compact connectors are not designed for use in open, easily accessible areas!)

Plug-in connection	
Mismating protection	Yes
Note on mismating protection	All WINSTA® components are 100% protected against mismating when: a.) plugging different numbers of poles b.) plugging while rotated 180 c.) plugging while laterally staggered d.) plugging one pole
Locking lever	Yes
Locking of plug-in connection	Locking lever
Note on locking system	All connectors for mounted installations (snap-in versions for lighting fixtures or devices, all types of PCB and distribution connectors) are factory-equipped with locking levers to ensure plugs and sockets are securely locked. Additional locking levers are only required for flying leads (plug/socket).
Number of locking levers	6







Material data	
Note (material data)	Information on material specifications can be found here
Color	black
Insulation material	Polyamide (PA66)
Flammability class per UL94	V0
Contact material	Copper or copper alloy; surface-treated
Contact plating	Tin
Fire load	1.593 MJ
Weight	87.5 g

Environmental requirements	
Processing temperature	-5 ... +40 °C
Continuous operating temperature	-35 ... +85 °C
Note on continuous operating temperature	Insulating parts for temperatures ≤ 105 °C

Commercial data	
eCl@ss 10.0	27-44-06-03
eCl@ss 9.0	27-44-06-03
ETIM 8.0	EC002567
ETIM 7.0	EC002567
PU (SPU)	10 pcs
Packaging type	Box
Country of origin	DE
GTIN	4045454530914
Customs tariff number	85366990990

Environmental Product Compliance	
RoHS Compliance Status	Compliant,No Exemption

Downloads	
Environmental Product Compliance	
Compliance Search	
Environmental Product Compliance 770-640	

Documentation			
Bid Text			
770-640	19.02.2019	xml 3.13 KB	
770-640	10.12.2014	doc 23.00 KB	
ausschreiben.de 770-640			












CAD/CAE-Data	
CAD data	CAE data
2D/3D Models 770-640	EPLAN Data Portal 770-640
	WSCAD Universe 770-640
	ZUKEN Portal 770-640

1 Compatible Products

1.1 System counterpart

1.1.1 Cable assembly

			
Item No.: 771-9993/206-101 pre-assembled connecting cable; Eca; Plug/open-ended; 3-pole; Cod. A; H05VV-F 3G 1.5 mm²; 1 m; 1,50 mm²; black	Item No.: 771-9995/206-101 pre-assembled connecting cable; Eca; Plug/open-ended; 5-pole; Cod. A; H05VV-F 5G 1.5 mm²; 1 m; 1,50 mm²; black	Item No.: 771-9995/106-101 pre-assembled connecting cable; Eca; Socket/open-ended; 5-pole; Cod. A; H05VV-F 5G 1.5 mm²; 1 m; 1,50 mm²; black	Item No.: 771-9993/006-101 pre-assembled interconnecting cable; Eca; Socket/plug; 3-pole; Cod. A; H05VV-F 3G 1.5 mm²; 1 m; 1,50 mm²; black
			
Item No.: 771-9995/006-101 pre-assembled interconnecting cable; Eca; Socket/plug; 5-pole; Cod. A; H05VV-F 5G 1.5 mm²; 1 m; 1,50 mm²; black			

1.1.2 Female connector/socket			
			
Item No.: 770-205 Socket; 5-pole; Cod. A; 4,00 mm²; black	Item No.: 770-405 Socket; 5-pole; Cod. A; 4,00 mm²; black	Item No.: 770-105 Socket; with strain relief housing; 5-pole; Cod. A; 4,00 mm²; black	Item No.: 770-305 Socket; with strain relief housing; 5-pole; Cod. A; 4,00 mm²; black

1.1.3 Male connector/plug			
			
Item No.: 770-213 Plug; 3-pole; Cod. A; 4,00 mm²; black	Item No.: 770-215 Plug; 5-pole; Cod. A; 4,00 mm²; black	Item No.: 770-415 Plug; 5-pole; Cod. A; 4,00 mm²; black	Item No.: 770-113 Plug; with strain relief housing; 3-pole; Cod. A; 4,00 mm²; black
			
Item No.: 770-213/035-000 Plug; with strain relief housing; 3-pole; Cod. A; 4,00 mm²; black	Item No.: 770-115 Plug; with strain relief housing; 5-pole; Cod. A; 4,00 mm²; black	Item No.: 770-315 Plug; with strain relief housing; 5-pole; Cod. A; 4,00 mm²; black	

1.2 Optional Accessories

1.2.1 Cover

1.2.1.1 Cover



Item No.: 770-201
Lockout cap; 12-pole, separable; for sockets; Plastic; black



Item No.: 770-221
Lockout cap; 12-pole, separable; for sockets; Plastic; white



Item No.: 770-360
Lockout cap; for plugs; 5-pole; separable; yellow

1.2.2 Installation

1.2.2.1 Mounting accessories

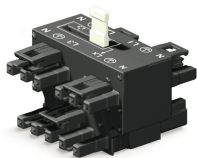


Item No.: 770-625
Mounting plate; 5-pole; for distribution connectors; Plastic; black

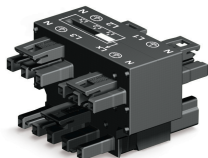


Item No.: 770-675
Mounting plate; 5-pole; for distribution connectors; Plastic; white

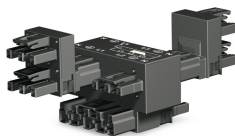
Installation Notes



Movable jumper

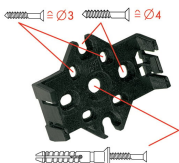


Jumper pushed down, flush with the housing (position L1)



Additional h-distribution connectors double L1 and L3.
This results in the following connection option:
L1/L1/L2/L2/L3/L3 with jumper in position L2
Notice: h-distribution connectors can only be plugged on L1 and L3.

Installation



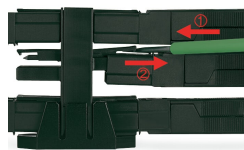
Mounting plates can be secured using commercially available screws or nail-drive anchors.



The distribution connectors snap together when attached to the mounting plate.



To release the distribution connector, unlock the latch using a screwdriver.



All distribution connector connections are locked and protected against accidental disconnection directly after mating. Locking of any connection is released using a screwdriver, even if all connections are used.