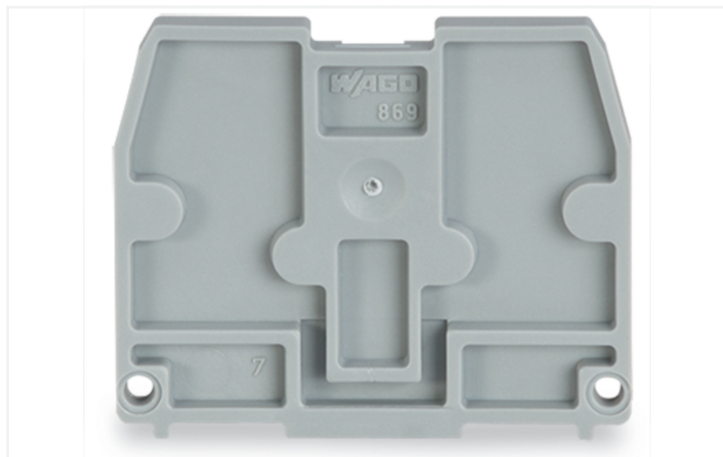


Data Sheet | Item Number: 869-375

End plate; for terminal blocks with snap-in mounting foot; 2.5 mm thick; gray

<https://www.wago.com/869-375>



Color: ■ gray

Physical data

Width	2.5 mm / 0.098 inches
Height	27.6 mm / 1.087 inches
Depth	33.4 mm / 1.315 inches

Material data

Note (material data)	Information on material specifications can be found here
Color	gray
Material group	I
Insulation material (main housing)	Polyamide (PA66)
Flammability class per UL94	V0
Fire load	0.048 MJ
Weight	1.5 g

Commercial data

Product Group	16 (Rail Mounted Terminal Blocks with CCC)
PU (SPU)	100 (25) pcs
Packaging type	Box
Country of origin	DE
GTIN	4017332612333
Customs tariff number	85389099990

Product Classification	
UNSPSC	39121410
eCl@ss 10.0	27-14-11-33
eCl@ss 9.0	27-14-11-33
ETIM 9.0	EC000886
ETIM 10.0	EC000886
ECCN	NO US CLASSIFICATION

Environmental Product Compliance	
RoHS Compliance Status	Compliant, No Exemption

Downloads

Environmental Product Compliance

Compliance Search	
Environmental Product Compliance 869-375	↓

Documentation

Bid Text			
869-375	19.02.2019	xml 2.55 KB	↓
869-375	14.06.2017	doc 23.00 KB	↓

CAD/CAE-Data

CAD data	
2D/3D Models 869-375	↓

CAE data	
EPLAN Data Portal 869-375	↓
WSCAD Universe 869-375	↓
ZUKEN Portal 869-375	↓

Subject to changes. Please also observe the further product documentation!

Current addresses can be found at: www.wago.com