

**Data Sheet | Item Number: 285-183**

2-conductor through terminal block; 95 mm²; suitable for Ex e II applications; lateral marker slots; with fixing flanges; POWER CAGE CLAMP; 95,00 mm²; light gray

<https://www.wago.com/285-183>



Color: ■ light gray

Similar to illustration

Through terminal block, 285 Series, light gray

Our through terminal block (item number 285-183) ensures effortless electrical installations. Strip lengths must be 35 mm when connecting conductors to this through terminal block. Featuring conductor terminals along with POWER CAGE CLAMP, this product is highly versatile. The POWER CAGE CLAMP is a powerful, maintenance-free, and universal way to connect large conductor cross-sections. You can also use it with all conductor types. The clamping point can be locked open and you do not need to use a torque wrench or prepare the conductor in any way, e.g., by crimping the ferrule. This through terminal block is suitable for conductor cross sections ranging from 25 mm² to 95 mm². It has one level. The single potential can connect using the two clamping points. The light gray housing is made of polyamide (PA66) for insulation. These high-current terminal blocks are mounted using panel mountings.. This product is designed for specific Ex applications (please refer to the product datasheet).

Electrical data			
Ratings per IEC/EN		Ratings per UL	
Ratings per	IEC/EN 60947-7-1	Approvals per	UL 1059
		Rated voltage UL (Use Group B)	600 V
		Rated current UL (Use Group B)	200 A
		Rated voltage UL (Use Group C)	600 V
		Rated current UL (Use Group C)	200 A
Ratings per CSA		Ex information	
Approvals per	CSA 22.2 No 158	Reference hazardous areas	See "Downloads – Documentation – Additional Information: Technical Section; Technical Explanations"
Rated voltage CSA (Use Group B)	600 V	Ratings per	ATEX: PTB 98 ATEX 3134 U (Ex eb IIC Gb)
Rated current CSA (Use Group B)	210 A	Rated voltage EN (Ex e II)	880 V
Rated voltage CSA (Use Group D)	600 V	Rated current (Ex e II)	211 A
Rated current CSA (Use Group D)	210 A	Rated current (Ex e II) with jumper	175 A



Connection data			
Clamping units	2	Connection 1	
Total number of potentials	1	Connection technology	POWER CAGE CLAMP
Number of levels	1	Actuation type	T-wrench; 8 mm
Number of jumper slots	2	Connectable conductor materials	Copper
		Nominal cross-section	95 mm²
		Solid conductor	25 ... 95 mm² / 4 ... 4/0 AWG
		Stranded conductor	25 ... 95 mm² / 4 ... 4/0 AWG
		Fine-stranded conductor	25 ... 95 mm² / 4 ... 4/0 AWG
		Fine-stranded conductor; with insulated ferrule	25 ... 95 mm² / 4 ... 4/0 AWG
		Fine-stranded conductor; with uninsulated ferrule	25 ... 95 mm² / 4 ... 4/0 AWG
		Strip length	35 mm / 1.38 inches
		Wiring direction	Side-entry wiring

Physical data			
Width		25 mm / 0.984 inches	
Height		107 mm / 4.213 inches	
Depth from upper-edge of DIN-rail		101 mm / 3.976 inches	

Mechanical data			
Mounting type		Mounting flange Panel mounting	
Marking level		Side marking	

Material data			
Note (material data)		<a href="#">Information on material specifications can be found here</a>	
Color		light gray	
Material group		I	
Insulation material (main housing)		Polyamide (PA66)	
Flammability class per UL94		V0	
Fire load		0.956 MJ	
Weight		267.4 g	

Environmental requirements			
Processing temperature		-35 ... +85 °C	
Continuous operating temperature		-60 ... +105 °C	

Commercial data			
PU (SPU)		5 pcs	
Packaging type		Box	
Country of origin		PL	
GTIN		4066966620030	
Customs tariff number		85369010000	



Environmental Product Compliance	
RoHS Compliance Status	Compliant,No Exemption

Approvals / Certificates

General approvals			Approvals for marine applications		
Approval	Standard	Certificate Name	Approval	Standard	Certificate Name
CCA DEKRA Certification B.V.	EN 60947	NTR NL-7707	ABS American Bureau of Ship- ping	EN 60947	20-HG1941090-PDA
CSA DEKRA Certification B.V.	C22.2	154112	DNV GL Det Norske Veritas, Ger- manischer Lloyd	-	TAE00001V2
KEMA/KEUR DEKRA Certification B.V.	EN 60947	71-105562			
UL Underwriters Laboratories Inc.	UL 1059	E45172			

Approvals for hazardous areas

Approval	Standard	Certificate Name
AEx Underwriters Laboratories Inc.	-	E185892 (AEx eb II C resp. Ex eb II C)
ATEX Physikalisch Technische Bundesanstalt	EN 60079-0	PTB 98 ATEX 3134 U (II 2 G Ex eb IIC Gb or I M 2 Ex eb I Mb)
IECEx Physikalisch Technische Bundesanstalt	IEC 60079-0	IECEx PTB 16.0001U (Ex eb IIC Gb or Ex eb I Mb)

Downloads

Environmental Product Compliance	
Compliance Search	
Environmental Product Compliance 285-183	

Documentation

Additional Information		
Technical Section	pdf 2246.92 KB	



1 Compatible Products

1.1 Optional Accessories

1.1.1 Cover

1.1.1.1 Cover



**Item No.: 285-169**  
Finger guard; touchproof cover protects unused conductor entries and jumper slots; for 95 mm² high-current tbs; yellow

1.1.2 Current and voltage tap

1.1.2.1 Current and voltage tap



**Item No.: 855-951/250-000**  
Current and voltage tap up to 95 mm²; Primary rated current: 250 A; Secondary rated current: 1 A; Rated power: 0.2 VA; Accuracy class: 0.5; fused

1.1.3 Ferrule

1.1.3.1 Ferrule



**Item No.: 216-435**  
Ferrule; Sleeve for 50 mm² / AWG 1; uninsulated; electro-tin plated; electrolytic copper; gastight crimped; acc. to DIN 46228, Part 1/08.92

1.1.4 Installation

1.1.4.1 Mounting accessories



**Item No.: 285-168**  
Fixing element; for 95 mm² high-current terminal blocks; orange



**Item No.: 249-197**  
Screwless end stop; 14 mm wide; for DIN-rail 35 x 15 and 35 x 7.5; gray

1.1.5 Jumper

1.1.5.1 Jumper



**Item No.: 285-495**  
Jumper; insulated; gray



1.1.6 Marking

1.1.6.1 Group marker carrier



Item No.: 249-105  
Group marker carrier; gray

1.1.6.2 Marker



Item No.: 793-5501/000-006  
WMB marking card; as card; for terminal block width 5 - 17.5 mm; stretchable 5 - 5.2 mm; plain; snap-on type; blue



Item No.: 793-5501/000-014  
WMB marking card; as card; for terminal block width 5 - 17.5 mm; stretchable 5 - 5.2 mm; plain; snap-on type; brown



Item No.: 793-5501/000-007  
WMB marking card; as card; for terminal block width 5 - 17.5 mm; stretchable 5 - 5.2 mm; plain; snap-on type; gray



Item No.: 793-5501/000-023  
WMB marking card; as card; for terminal block width 5 - 17.5 mm; stretchable 5 - 5.2 mm; plain; snap-on type; green



Item No.: 793-5501/000-017  
WMB marking card; as card; for terminal block width 5 - 17.5 mm; stretchable 5 - 5.2 mm; plain; snap-on type; light green



Item No.: 793-5501/000-012  
WMB marking card; as card; for terminal block width 5 - 17.5 mm; stretchable 5 - 5.2 mm; plain; snap-on type; orange



Item No.: 793-5501/000-005  
WMB marking card; as card; for terminal block width 5 - 17.5 mm; stretchable 5 - 5.2 mm; plain; snap-on type; red



Item No.: 793-5501/000-024  
WMB marking card; as card; for terminal block width 5 - 17.5 mm; stretchable 5 - 5.2 mm; plain; snap-on type; violet



Item No.: 793-5501  
WMB marking card; as card; for terminal block width 5 - 17.5 mm; stretchable 5 - 5.2 mm; plain; snap-on type; white



Item No.: 793-5501/000-002  
WMB marking card; as card; for terminal block width 5 - 17.5 mm; stretchable 5 - 5.2 mm; plain; snap-on type; yellow



Item No.: 793-501/000-006  
WMB marking card; as card; not stretchable; plain; snap-on type; blue



Item No.: 793-501/000-007  
WMB marking card; as card; not stretchable; plain; snap-on type; gray



Item No.: 793-501/000-023  
WMB marking card; as card; not stretchable; plain; snap-on type; green



Item No.: 793-501/000-017  
WMB marking card; as card; not stretchable; plain; snap-on type; light green



Item No.: 793-501/000-012  
WMB marking card; as card; not stretchable; plain; snap-on type; orange



Item No.: 793-501/000-005  
WMB marking card; as card; not stretchable; plain; snap-on type; red



Item No.: 793-501/000-024  
WMB marking card; as card; not stretchable; plain; snap-on type; violet



Item No.: 793-501  
WMB marking card; as card; not stretchable; plain; snap-on type; white



Item No.: 793-501/000-002  
WMB marking card; as card; not stretchable; plain; snap-on type; yellow



Item No.: 2009-115/000-006  
WMB-Inline; for Smart Printer; 1500 pieces on roll; stretchable 5 - 5.2 mm; plain; snap-on type; blue



Item No.: 2009-115/000-007  
WMB-Inline; for Smart Printer; 1500 pieces on roll; stretchable 5 - 5.2 mm; plain; snap-on type; gray



Item No.: 2009-115/000-023  
WMB-Inline; for Smart Printer; 1500 pieces on roll; stretchable 5 - 5.2 mm; plain; snap-on type; green



Item No.: 2009-115/000-017  
WMB-Inline; for Smart Printer; 1500 pieces on roll; stretchable 5 - 5.2 mm; plain; snap-on type; light green



Item No.: 2009-115/000-012  
WMB-Inline; for Smart Printer; 1500 pieces on roll; stretchable 5 - 5.2 mm; plain; snap-on type; orange



Item No.: 2009-115/000-005  
WMB-Inline; for Smart Printer; 1500 pieces on roll; stretchable 5 - 5.2 mm; plain; snap-on type; red



Item No.: 2009-115/000-024  
WMB-Inline; for Smart Printer; 1500 pieces on roll; stretchable 5 - 5.2 mm; plain; snap-on type; violet



Item No.: 2009-115  
WMB-Inline; for Smart Printer; 1500 pieces on roll; stretchable 5 - 5.2 mm; plain; snap-on type; white



Item No.: 2009-115/000-002  
WMB-Inline; for Smart Printer; 1500 pieces on roll; stretchable 5 - 5.2 mm; plain; snap-on type; yellow

1.1.6.3 Marker carrier



Item No.: 285-442  
Adaptor; gray

1.1.7 Power tap

1.1.7.1 Power tap



**Item No.: 285-407**  
Power tap; for 95 mm² high-current tbs;  
gray

1.1.8 Protective warning marker

1.1.8.1 Cover



**Item No.: 285-170**  
Protective warning marker; with high-voltage symbol, black; yellow



**Item No.: 285-175**  
Protective warning marker; yellow

1.1.9 Tool

1.1.9.1 Operating tool



**Item No.: 285-172**  
Allen wrench; with a partially insulated shaft; green



**Item No.: 285-173**  
Allen wrench; with a partially insulated shaft; with anti-rotation protection; green

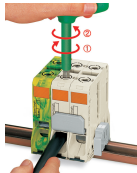
Installation Notes

Conductor termination



For the optimal clamping force:

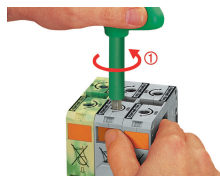
- Bend conductor
- Cut conductor to length (conductor end must be straight)
- Strip conductor



A short counter-clockwise rotation releases the tab. When unlocked, the T-wrench rotates clockwise, securely clamping the conductor.



Always observe the on-unit printed strip length guide!

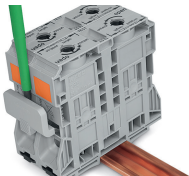
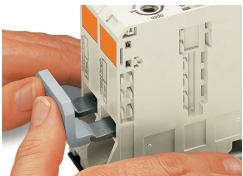


**Conductor termination – step 1:**  
Rotate the T-wrench counter-clockwise to the stop . Next, push in the orange locking tab. The clamp is locked open for hands-free wiring.



Insert a stripped conductor into the clamping unit until it hits the backstop. Hold in this position.

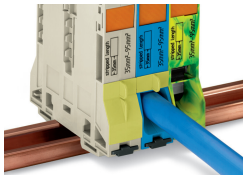
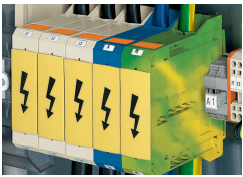
Commoning



Commoning with an adjacent jumper: insert the jumper above the conductor entry hole – prior to conductor termination. The nominal cross-section remains unchanged.

Removing jumper via operating tool.

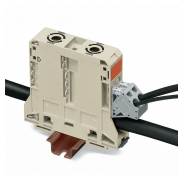
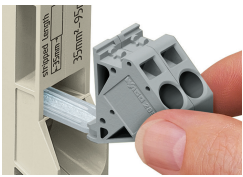
Cover



Protective warning marker may indicate: Notice: Power is still on even after switching off the main switch!

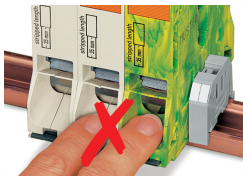
Yellow, detachable finger guards provide touch-proof safety by shielding jumper contact slots and/or unused conductor entries.

Power tap



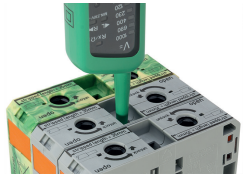
Easily and consistently tap directly into the power supply. Insert the unwired tap before opening the clamping unit.

Security



Risk of Injury!  
Do not insert fingers in the conductor entry!

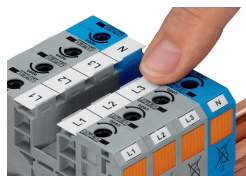
Testing



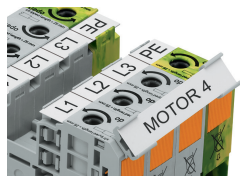
Testing via touch-proof 4 mm Ø test plugs (not available from WAGO, but offered by industry suppliers such as, Multi-Contact Deutschland GmbH).

Testing  
Voltage measurements can be performed, e.g., using a 2-pole voltage tester (206-707).

## Marking



WMB markers or self-adhesive, printable marking strips can be accommodated on 35, 50 and 95 mm<sup>2</sup> high-current terminal blocks.



Marker carrier (Item No. 285-442) for marking strips (Item No. 2009-110) or 2 WMB markers for 285-13x, 285-15x and 285-19x Terminal Blocks