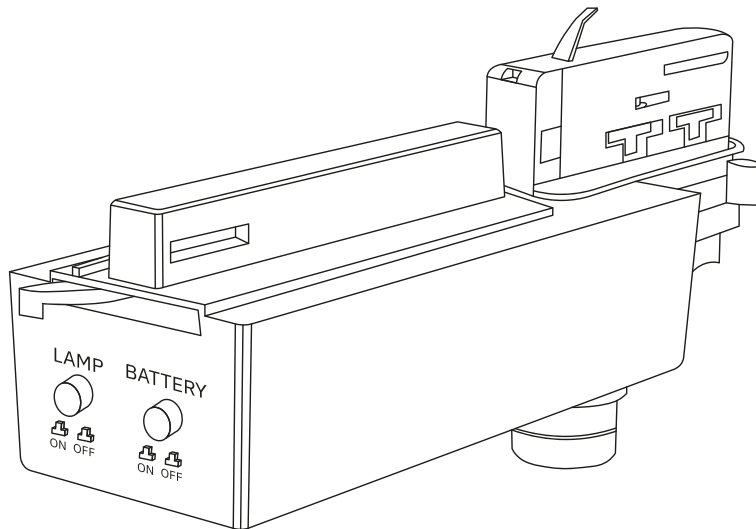




Read these instructions & save for future use

## Emergency track light | 1,7W | white | Auto test



Article number **600-034**

Brand **Tronix Lighting**

Type **Emergency lighting**

Contents of this product **1x 1,7W emergency track light**

Technical datasheet **Digitally available  
on our webshop**



*View instructions and  
technical data also on  
our website*

**TRONIX**



## Before first use

Before getting started with this product, it is advisable to check the order completeness and any damage. If this is the case, please contact Tronix Lighting.

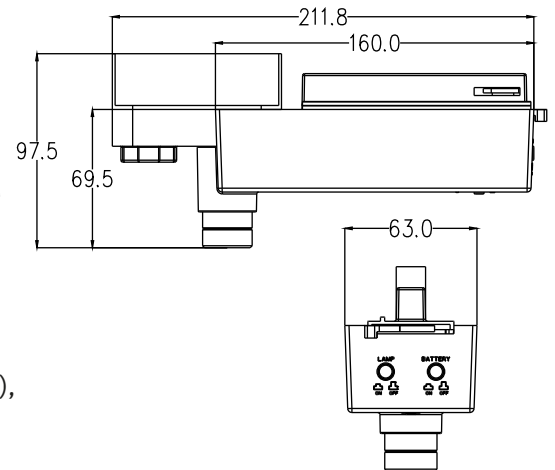
## Description

Emergency lighting is incredibly important for any building, commercial building or office. These fixtures are not only very functional, but are also designed with a focus on visibility and optimal operation.

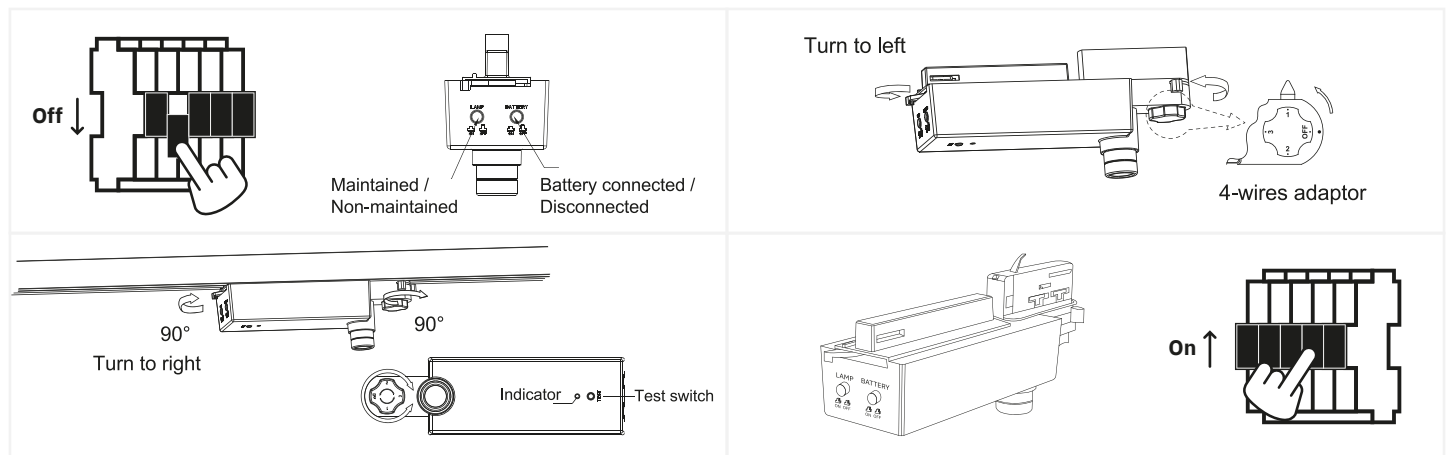
This set also features an auto test. This automatically periodically tests the light source, both electronic and battery powered.

### Features

- Periodic auto test according to international standard IEC62034;
- Four tests: Test after commissioning (battery charging, test and charge), short function (3 seconds focusing on condition), monthly test (3 minutes) and annual test (1 or 3 hours).



## Installation



1. Turn off the power and remove the product and associated parts from the packaging. Disconnect the battery and then press the side buttons to set the lamp's settings properly;
2. Turn the location adapter to OFF and open the lock by pushing the lever to the left;
3. Secure the rail spotlight in the rail by turning the lever and adapter 90° to the right. Then turn the adapter until the indicator lights green. It will then perform tests on its own in seconds (battery, module and lamp check), months (3-minute test) and years (1-hour and 3-hour tests);
4. Check the complete installation. If everything is OK, you can reactivate the power.



## Safety

Safety is a top priority at Tronix Lighting. Therefore, we heartily recommend that you follow the following steps closely:

- Keep this manual carefully for future reference;
- Choose a qualified electrician while installing, maintaining or inspecting this product;
- Never look directly into a light source to avoid possible eye damage;
- Ensure that the respective power group is always on non-active when the product is connected;
- Use only recommended combinations (LED drivers, controllers or dimmers) to avoid injury or damage to the product;
- The light source of this light is not replaceable. Because of this, you must replace the entire fixture towards the end of its lifespan and it is not recommended to open it;
- Led indicator codes (4 second pause to pattern): 1 flash: Battery not connected. 2 flashes: Low voltage battery. 3 flashes: circuit board error. 4 flashes: AC/DC fault. 5 flashes: led lamp error.

## Technical problems and repair

Should a product not work properly after installation, or if the product exhibits problems over time, it is advisable to check the following elements:

- Check the wiring and installation of your product;
- Check for the presence of interfering elements such as dust, water or other electronics;
- If possible, try disconnecting the product and testing it in another location to rule out a problem at the location;
- Should you be dealing with a WIFI-based product, check and reset your router's settings.

Should the product still not work after testing, it is recommended to send it in for inspection and/or repair. To do so, please contact Tronix Lighting using nearby details and proof of purchase (packing slip).



CARE



SHARE



CONNECT

### Supplier:

Tronix Lighting B.V

Vluchtoord 41  
5406 XP Uden, Netherlands

+31 (0)413 330 380  
sales@tronixlighting.com

## Terms and symbols (as relevant to product)



The **CE mark** indicates that this product complies with EU regulations on safety, health and environmental protection;



The **WEEE symbol** stands for "Waste Electrical and Electronic Equipment Regulation," a directive on the collection, recycling and recovery of electronic waste;



The **Class II symbol** indicates that this product is double insulated;

- The product is rated **IP20**. This means that the product is resistant to the penetration of solid objects >12.5 mm and is not resistant to water or moisture.