

Technische Daten/ Technical Data

KLUDI RENON
3-hole basin mixer
DN 15

Ref.: 42393N575

Finishes:
N5 Stainless Brushed Nickel PVD

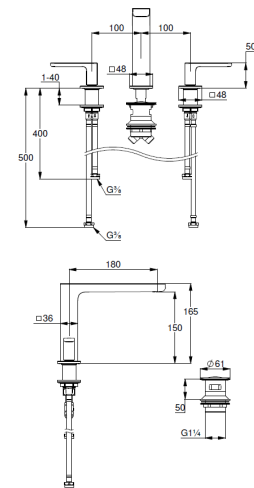
Product description
Manufacturer KLUDI GmbH & Co. KG
Typ: KLUDI RENON
3-hole basin mixer
Ref.: 42393N575

3-hole basin mixer
3-hole mounted
solid lever, metal
aerator M18,5 PCA
ceramic headparts 90°
flow rate at 3 bar 4,5 l/min.
fixed spout
flexible hoses G3/8 DVGW approved
rapid installation set
push open waste G1 1/4
for washbasin with overflow
EU taxonomy: max. 6 l/min. -
Substantial Contribution (SC) possible

Produktabbildung/ Product picture



Maßzeichnung/ Dimensional drawing



Durchfluss/ Flow rate

