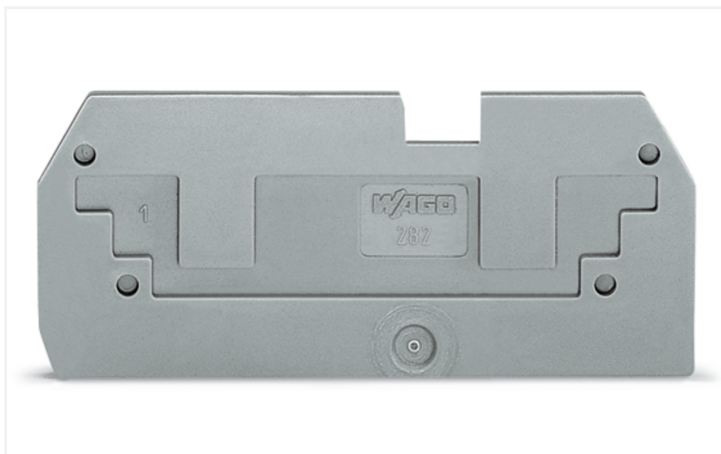


Data Sheet | Item Number: 282-367

Step-down cover plate; 1 mm thick; in connection with 2-conductor 282-901 terminal blocks; orange

<https://www.wago.com/282-367>



Color: ■ orange

Similar to illustration

Physical data

Width	1 mm / 0.039 inches
Height	74.1 mm / 2.917 inches
Depth	23.3 mm / 0.917 inches

Material data

Note (material data)	Information on material specifications can be found here
Color	orange
Material group	I
Insulation material (main housing)	Polyamide (PA66)
Flammability class per UL94	V0
Fire load	0.055 MJ
Weight	1.8 g

Environmental requirements

Processing temperature	-35 ... +85 °C
Continuous operating temperature	-60 ... +105 °C

Commercial data

Product Group	1 (Rail Mounted Terminal Blocks)
PU (SPU)	100 (25) pcs
Packaging type	Box
Country of origin	DE
GTIN	4017332337243
Customs tariff number	85389099990

Product Classification

UNSPSC	39121421
eCl@ss 10.0	27-14-11-33
eCl@ss 9.0	27-14-11-33
ETIM 9.0	EC000886
ETIM 10.0	EC000886
ECCN	NO US CLASSIFICATION

Environmental Product Compliance

RoHS Compliance Status	Compliant, No Exemption
------------------------	-------------------------

Downloads

Environmental Product Compliance

Compliance Search

Environmental Product Compliance 282-367	↓
--	-------------------

Documentation

Bid Text

282-367	19.02.2019	xml 2.49 KB	↓
282-367	02.05.2017	doc 23.50 KB	↓

CAD/CAE-Data

CAD data

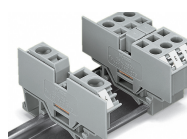
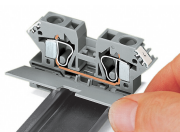
2D/3D Models 282-367	↓
----------------------	-------------------

CAE data

EPLAN Data Portal 282-367	↓
WSCAD Universe 282-367	↓
ZUKEN Portal 282-367	↓

Installation Notes

Installation



Snapping a cover plate onto open side of terminal block.

A cover plate must also be snapped onto the other side of the larger terminal block.

Subject to changes. Please also observe the further product documentation!

Current addresses can be found at: www.wago.com