

## Data Sheet | Item Number: 209-192

Separator for Ex e/Ex i applications; 3 mm thick; 125.5 mm wide; orange

<https://www.wago.com/209-192>



Color: ■ orange

### Physical data

Width	3 mm / 0.118 inches
Height	125.5 mm / 4.941 inches
Depth from upper-edge of DIN-rail	64 mm / 2.52 inches

### Mechanical data

Mounting type	DIN-35 rail
---------------	-------------

### Material data

Note (material data)	<a href="#">Information on material specifications can be found here</a>
Color	orange
Material group	I
Insulation material (main housing)	Polyamide (PA66)
Flammability class per UL94	V0
Fire load	0.442 MJ
Weight	15.7 g

### Commercial data

Product Group	2 (Terminal Block Accessories)
PU (SPU)	50 (25) pcs
Packaging type	Box
Country of origin	DE
GTIN	4045454654320
Customs tariff number	85389099990



Product Classification	
UNSPSC	39121321
eCl@ss 10.0	27-14-11-33
eCl@ss 9.0	27-14-11-33
ETIM 9.0	EC000886
ETIM 10.0	EC000886
ECCN	NO US CLASSIFICATION

Environmental Product Compliance	
RoHS Compliance Status	Compliant, No Exemption

### Downloads

#### Environmental Product Compliance

Compliance Search	
Environmental Product Compliance 209-192	<a href="#">↓</a>

### Documentation

Bid Text			
209-192	19.02.2019	xml 2.53 KB	<a href="#">↓</a>
209-192	04.01.2018	doc 23.50 KB	<a href="#">↓</a>

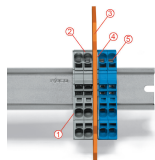
### CAD/CAE-Data

CAD data	
2D/3D Models 209-192	<a href="#">↓</a>

CAE data	
EPLAN Data Portal 209-192	<a href="#">↓</a>
WSCAD Universe 209-192	<a href="#">↓</a>
ZUKEN Portal 209-192	<a href="#">↓</a>

### Installation Notes

## Ex application

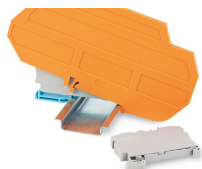


A separator plate is located between the Ex e II and Ex i terminal strip.

- End plate
- Ex e II terminal blocks
- Separator plate for Ex e/Ex i applications
- End plate
- Ex i terminal blocks

According to EN 50020, a minimum distance of 50 mm must be kept between live parts of Ex e and Ex i circuits. The use of Ex e/Ex i separators is a space-saving solution when Ex e and Ex i terminal blocks are mounted on a common DIN-rail.

## Security



### Ex e II/Ex i terminal strip

**Note:**

The movable feet of terminal blocks and separator plates must face the same direction.