

28 689 970 Product version from 3/13/2017



- rain shower Ø 300 mm
- Rain shower material: metal
- PURE RAIN, max. flow rate 14 l/min (at 3 bar)
- Function from: 10 l/min
- quick clearing
- with anti-scale system

technical data:

- rosette Ø 60 mm optional
- 1/2" connection

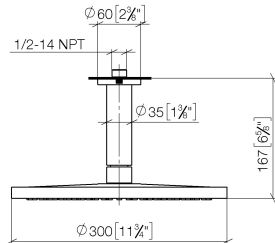
Notes:

Recommended miscellaneous

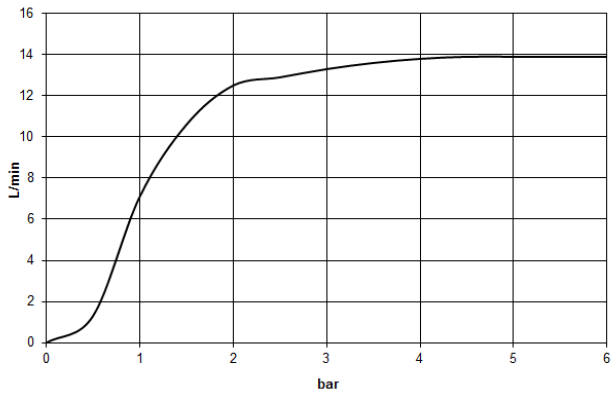
- | | | |
|---|---|----------------------|
|  | <p>Concealed wall elbow - • min. recess depth 90 mm • max. recess depth 163 mm</p> | <p>35 085 970 90</p> |
|---|---|----------------------|

28 689 970 Product version from 3/13/2017

mm [inches]



Flow rate chart



Codes & Standards

DIN 4109

EN 1112

ISO 3822

Scottish Water
Byelaws

UK Water Supply
Regulations

Ü-Zeichen



Rainshower with ceiling fixing 300 mm - Brushed Dark Platinum

SERIES SPECIFIC

28 689 970 Product version from 3/13/2017

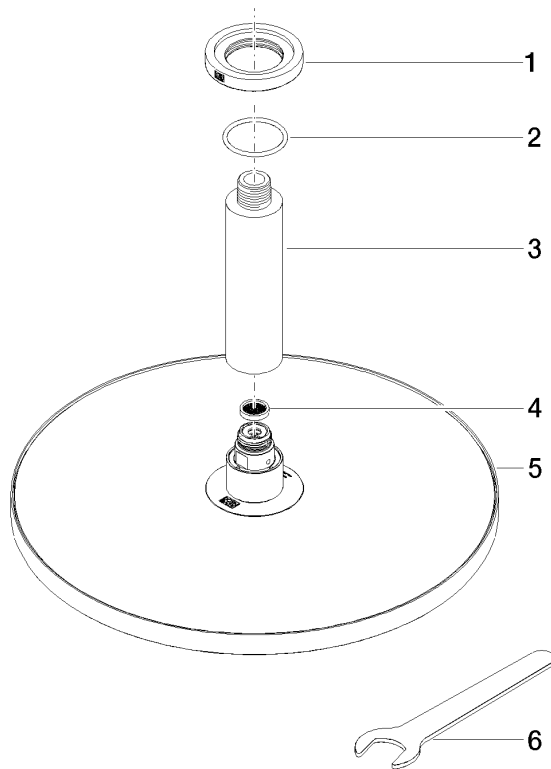
Certificates and sustainability

LGA_29

LGA_29

DVGW_DW-
6517DN0

WRAS_2212



Spare parts list

| No. | Item Number | Name | Quantity used | Delivery time |
|-----|--------------------|--|---------------|---------------|
| 5 | 04 12 05 091 00-99 | Rainshower round Ø 300 mm - Brushed Dark Platinum | 1.00 | 40 |
| 1 | 09 27 22 040-99 | Rosette Ø 60 x Ø 35 x 9 mm - Brushed Dark Platinum | 1.00 | 40 |
| 4 | 09 23 01 075 90 | Sieve seal Ø 18 x 3,5 mm - | 1.00 | 14 |
| 2 | 09 14 10 141 90 | O-Ring NBR 70 34,59 x 2,62 mm - | 1.00 | 14 |
| 3 | 09 11 03 080-99 | Connection Ø 35 x 135 mm - Brushed Dark Platinum | 1.00 | 40 |
| 6 | 90 30 09 069 00 90 | Spanner - | 1.00 | 14 |