

Data Sheet | Item Number: 284-358

Step-down cover plate; 1 mm thick; for 3-conductor 284-681 terminal blocks; gray

<https://www.wago.com/284-358>



Color: ■ gray

Similar to illustration

Physical data

Width	1 mm / 0.039 inches
Height	97.4 mm / 3.835 inches

Material data

Note (material data)	Information on material specifications can be found here
Color	gray
Material group	I
Insulation material (main housing)	Polyamide (PA66)
Flammability class per UL94	V0
Fire load	0.064 MJ
Weight	2.1 g

Commercial data

Product Group	1 (Rail Mounted Terminal Blocks)
PU (SPU)	100 (25) pcs
Packaging type	Box
Country of origin	DE
GTIN	4017332337199
Customs tariff number	85389099990

Product Classification

UNSPSC	39121421
eCl@ss 10.0	27-14-11-33
eCl@ss 9.0	27-14-11-33
ETIM 9.0	EC000886
ETIM 10.0	EC000886
ECCN	NO US CLASSIFICATION

Environmental Product Compliance

RoHS Compliance Status	Compliant, No Exemption
------------------------	-------------------------

Downloads

Environmental Product Compliance

Compliance Search

Environmental Product Compliance 284-358	↓
--	---

Documentation

Bid Text

284-358	02.05.2017	doc 23.50 KB	↓
284-358	19.02.2019	xml 2.49 KB	↓

CAD/CAE-Data

CAD data

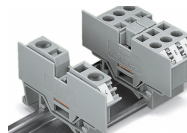
2D/3D Models 284-358	↓
----------------------	---

CAE data

WSCAD Universe 284-358	↓
ZUKEN Portal 284-358	↓

Installation Notes

Installation



Snapping a cover plate onto open side of terminal block.

A cover plate must also be snapped onto the other side of the larger terminal block.

Subject to changes. Please also observe the further product documentation!

Current addresses can be found at: www.wago.com