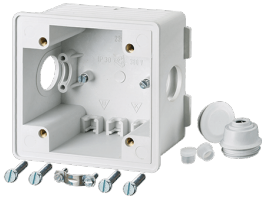


## Flush mounted installation box

Part no. 40369

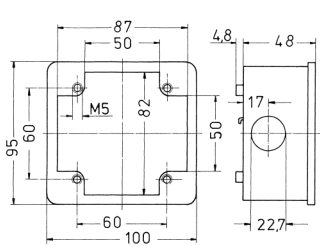


- with accessories
- suitable together with the appropriate flange for mounting a 16 A or 32 A panel mounted receptacle of product groups 1046, 1056, 1134 and 1136

## Technical specifications

|        |       |
|--------|-------|
| Weight | 140 g |
|--------|-------|

## Drawing



Drawing  
1 MB 232  
Dim. in mm