





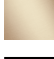

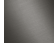
CL.1 Single-lever bath mixer with stand pipe for free-standing assembly with hand shower set - Chrome

CL.1

25 863 705 Product version from 7/1/2023



- 238mm projection
- rectangular spray pattern with 55 individual jets
- max. spout flow rate 24.6 l/min
- Hand shower: COMPACT RAIN, max. flow rate 6.8 l/min (at 3 bar)
- bar-type hand shower with anti-scale system
- wall bracket
- automatic bath/shower diverter
- total height 935 - 1005 mm
- stand pipe height 598 - 668 mm
- height up to aerator 852 – 922 mm
- push-on rosette 131 x 131 mm
- metal shower hose 1250mm with integrated anti-twist protection

	Chrome	25 863 705-00
	Brushed Platinum	25 863 705-06
	Dark Chrome	25 863 705-19
	Brushed Light Gold (PVD)	25 863 705-27
	Brushed Champagne (22kt Gold)	25 863 705-46
	Champagne (22kt Gold)	25 863 705-47
	Brushed Dark Platinum	25 863 705-99

Required miscellaneous

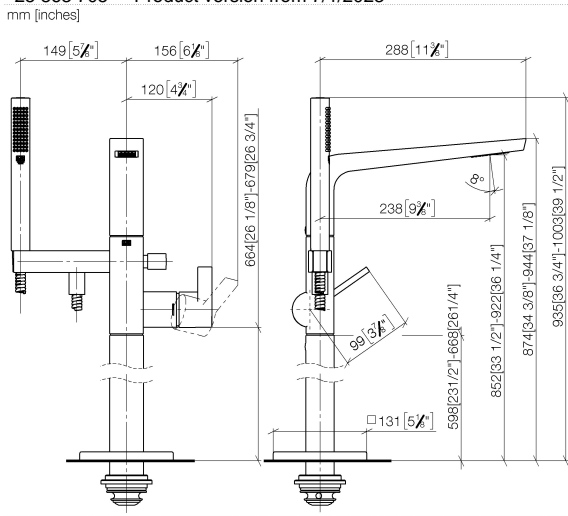


- Concealed floor mounting -** 35 945 970 90
- min. recess depth 80 mm
 - max. recess depth 150 mm

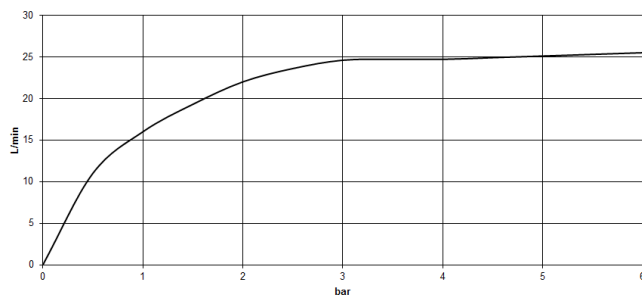
CL.1 Single-lever bath mixer with stand pipe for free-standing assembly with hand shower set - Chrome

CL.1

25 863 705 Product version from 7/1/2023
mm [inches]



Flow rate chart



Codes & Standards

ASME A112.18.1

cUPC

DIN 4109

EN 1717

ISO 3822

Ü-Zeichen



CL.1 Single-lever bath mixer with stand pipe for free-standing assembly with hand shower set - Chrome

CL.1

25 863 705 Product version from 7/1/2023

Certificates and sustainability

Belgaqua_19_77

IAPMO_4976

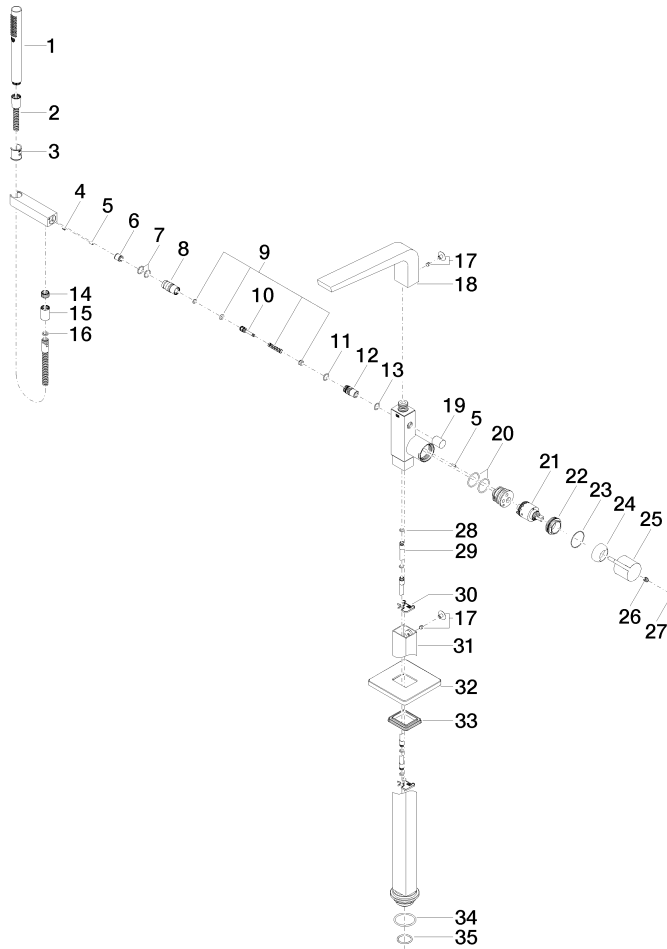
Belgaqua_24-003-2 LGA_29

EPD-DOR-20230287
-IBA1-EN
Environmental.prod
uct-declarat

CL.1 Single-lever bath mixer with stand pipe for free-standing assembly with hand shower set - Chrome

CL.1

25 863 705 Product version from 7/1/2023



CL.1 Single-lever bath mixer with stand pipe for free-standing assembly with hand shower set - Chrome

CL.1

25 863 705 Product version from 7/1/2023

Spare parts list

No.	Item Number	Name	Quantity used	Delivery time
	23 09 14 10 037 90	O-Ring 42,0 x 1,5 . mm -	1.00	14
	21 90 15 05 039 00 90	Cartridge blue Ø 40 x 75 mm -	1.00	14
	17 04 31 20 034 00 90	Plug Cover with threaded pin -	2.00	14
	25 09 20 67 014-00	Handle Lever 50 x 46 x 124 mm - Chrome	1.00	20
	35 09 14 10 018 90	O-Ring EPDM 70 32,0 x 3,0 mm -	1.00	14
	24 09 28 30 036-00	Cover Ø 46 x 18 mm - Chrome	1.00	20
	11 90 14 10 055 00 90	O-Ring EPDM 70 15,0 x 2,0 mm -	1.00	14
	33 09 14 03 107 90	Washer 67 x 10 x 59 mm -	1.00	14
	26 90 31 11 030 00 90	Mounting Threaded pin with hexagon socket with cup point M5 x 5 mm -	1.00	14
	19 09 20 71 031-00	Pull button for pop-up waste - Chrome	1.00	20
	10 09 31 09 094 20-00	Pull rod for diverter Ø 12 x 46 mm - Chrome	1.00	20
	32 09 27 71 011-00	Rosette 131 x 12,5 x 131 mm - Chrome	1.00	20
	8 09 24 03 130-00	Nipple Ø 22 x 43 mm - Chrome	1.00	20
	9 90 16 02 023 00 90	Diverter Repair kit, bath deck mounting 15 x 50 x 15 mm -	1.00	14
	5 09 31 11 040 90	Straight pin Ø 6 x12 mm -	3.00	14
	7 90 14 10 010 00 90	O-Ring EPDM 70 17,0 x 2,0 mm -	2.00	14
	15 90 21 02 069 00-00	Cover/sleeve M20 x 1 - Chrome	1.00	20
	14 09 24 03 069 90	Nipple Ø 20 x11,5 mm -	1.00	14
	4 09 31 11 058 90	Mounting Threaded pin with hexagon socket with cup point M5 x 8 mm -	1.00	14
	13 90 14 10 033 00 90	O-Ring EPDM 70 14,5 x 2,0 mm -	1.00	14
	29 04 28 22 025 00 90	Supply pipe Ø 12 x 70 mm -	2.00	14
	18 90 11 70 008 00-00	Spout 285 x 395 x 155 mm - Chrome	1.00	20
	6 90 23 01 141 00 90	Back-flow preventer -	1.00	14
	12 09 21 34 080-00	Diverter Ø 19,40 x 37 mm - Chrome	1.00	20
	34 09 14 10 084 90	O-Ring EPDM 70 48 x 3,5 mm -	1.00	14
	28 09 14 10 139 90	O-Ring EPDM 70 9,0 x 2,0 mm -	2.00	14
	3 09 18 40 118 90	Sleeve Ø 27,5 x 30 mm -	1.00	14
	31 04 28 22 024 00-00	Pipe 688 mm - Chrome	1.00	20
	20 09 14 10 148 90	O-Ring 32 x 2,5 mm -	2.00	14
	16 90 14 20 026 00 90	Washer 14 x 8 x 2 mm Centellen WS 3820 -	1.00	14
	30 09 20 93 051 90	Mounting 43 x 35 x 3,5 mm -	2.00	14
	2 90 30 02 072 00-00	Metal shower hose 1/2" x 3/8" x 1250 mm - Chrome	1.00	20
	27 90 31 20 087 00-00	Plug with O-ring Ø 7 x 2,1 mm - Chrome	1.00	20
	22 09 24 04 298 90	Mounting Ø 42 x 17 mm -	1.00	14
	1 90 12 11 140 41-00	Bar-type hand shower 6,8 l/min - Chrome	1.00	-

Spare part can no longer be ordered, please order the replacement item