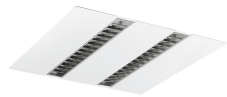


RANA Recessed 600

RANA LED R 600 LO 4K LOUV+PRI W GEN2

0052404



Product features

- Ceiling Recessed LED Linear luminaire (lay-in), with Louvre + Prismatic Optic, Direct Light Distribution, Luminaire Dimensions: 595x595x60mm, Sylvania White body colour, IP20, IK07, Light Engine Dimensions: 570x130mm, Constant Current, Low LED flicker (+/-5%), Neutral White (4000K) LED Colour Temperature, 3000lm, 28W, 107lm/W efficacy, CRI>80, 3 SDCM (3-step MacAdam ellipse) LED Colour Consistency, UGR<19, Luminance at 65° < 3000 cd/m2, Lumen Maintenance: L90B10 at 50,000 hours, Glow Wire Test 850°C, Quick and easy electrical connection with direct access to push-connectors on top, 2 x metallic safety cables (1.5m) included, the luminaire can be covered with building insulation of Glass Wool type.

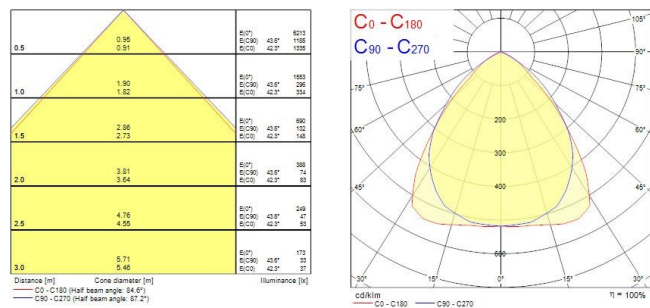


PRODUCT OVERVIEW

Product name	RANA LED R 600 LO 4K LOUV+PRI W GEN2
Technology	LED
Cap/Base	N/A
Housing	Steel
Mount	Ceiling recessed mounting
General application	Education, Hospitality, Office, Retail
ETIM Class	EC002892
E-number FI	4273755
Warranty	5 years
Useful luminous flux (Fuse)	3000
Fixture luminous flux (lm)	3000
Luminous flux (lm)	3000
Luminaire efficacy (lm/W)	107
Correlated colour temperature (k)	4000
Light colour	Neutral White
CRI (Ra)	80
Colour Variation Initial (SDCM)	SDCM3
Glare control	< 19
Photobiological Risk Group	RG0
Total power consumption (W)	28
Electrical protection	Class I
Control gear type	LED driver constant current
Dimmable	No
Dimming method	N/A
LED Flickering Rate	Ultra low (5% or less)
Housing colour	White
IP rating	IP20
IK rating	IK07
Product EAN number	5410288524047

RANA Recessed 600
RANA LED R 600 LO 4K LOUV+PRI W GEN2
0052404

PHOTOMETRY



TECHNICAL DRAWINGS

