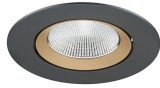


## Exospot 70 adjustable

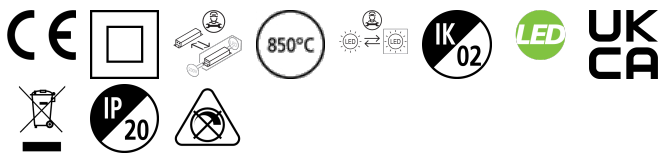
### EXOSPOT 70 ADJUSTABLE RA90 3000K MB BLACK

2070027



#### Product features

- Integrated LED adjustable accent downlight, single head, ideal for retail and display applications, die-cast aluminium body, black colour housing, passive cooling, beam angle: 42°, optics: aluminium reflector and lens combination, colour temperature: 3000K, total system power: 21W, total fixture output: 1793lm, 85lm/W, LOR: 100%, colour rendering: Ra 90 typical, LED Chromacity: 3 step MacAdam ellipse, lifetime: 55,000 hours at L90B10, energy class: A++, A+, A, IR/UV free light source without heat radiation, operating voltage: 220-240V / 50-60Hz, electronic driver, non-dimmable, electrical protection: CLASS II, ingress protection rating: IP20, suitable for internal environment only, ceiling cut-out: 126mm, outer dimensions: 137x101mm, weight: 0.52kg.

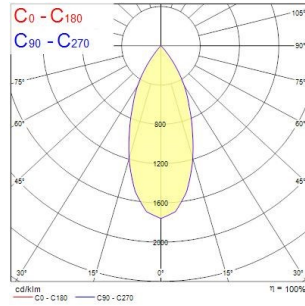
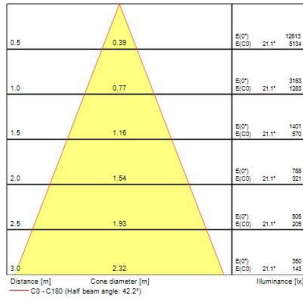


#### PRODUCT OVERVIEW

Product name	EXOSPOT 70 ADJUSTABLE RA90 3000K MB BLACK
Technology	LED
Cap/Base	N/A
Housing	Aluminium
Mount	Ceiling recessed mounting
Fixture rating	Enclosed
General application	Hospitality, Museums & Galleries, Retail
ETIM Class	EC001744
Warranty	5 years
Fixture luminous flux (lm)	1793
Luminaire efficacy (lm/W)	85
LOR (%)	100
Colour temperature (K)	3000
Light colour	Warm White
CRI (Ra)	90
Colour Variation Initial (SDCM)	SDCM3
Beam Angle (°)	42
Photobiological Risk Group	RG1
Total power consumption (W)	21
Electrical protection	Class II
Control gear type	LED driver constant current
Control gear mounting	Remote
Dimmable	No
Dimming method	N/A
Housing colour	Black
IP rating	IP20
IK rating	IK02
Product EAN number	5025768700271

#### PHOTOMETRY

## Expospot 70 adjustable EXPOSPOT 70 ADJUSTABLE RA90 3000K MB BLACK 2070027



## TECHNICAL DRAWINGS

