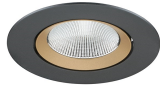


Expospot 70 adjustable

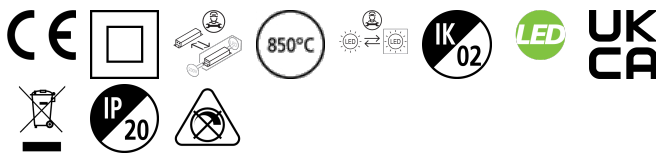
EXPOSPOT 70 ADJUSTABLE RA90 3000K MB BLACK

2070027



Product features

- Integrated LED adjustable accent downlight, single head, ideal for retail and display applications, die-cast aluminium body, black colour housing, passive cooling, beam angle: 42°, optics: aluminium reflector and lens combination, colour temperature: 3000K, total system power: 21W, total fixture output: 1793lm, 85lm/W, LOR: 100%, colour rendering: Ra 90 typical, LED Chromacity: 3 step MacAdam ellipse, lifetime: 55,000 hours at L90B10, energy class: A++, A+, A, IR/UV free light source without heat radiation, operating voltage: 220-240V / 50-60Hz, electronic driver, non-dimmable, electrical protection: CLASS II, ingress protection rating: IP20, suitable for internal environment only, ceiling cut-out: 126mm, outer dimensions: 137x101mm, weight: 0.52kg.



PRODUCT OVERVIEW

Product name	EXPOSPOT 70 ADJUSTABLE RA90 3000K MB BLACK
Technology	LED
Cap/Base	N/A
Housing	Aluminium
Mount	Ceiling recessed mounting
Fixture rating	Enclosed
General application	Hospitality, Museums & Galleries, Retail
ETIM Class	EC001744
Warranty	5 years
Fixture luminous flux (lm)	1793
Luminaire efficacy (lm/W)	85
LOR (%)	100
Colour temperature (K)	3000
Light colour	Warm White
CRI (Ra)	90
Colour Variation Initial (SDCM)	SDCM3
Beam Angle (°)	42
Photobiological Risk Group	RG1
Total power consumption (W)	21
Electrical protection	Class II
Control gear type	LED driver constant current
Control gear mounting	Remote
Dimmable	No
Dimming method	N/A
Housing colour	Black
IP rating	IP20
IK rating	IK02
Product EAN number	5025768700271

DATA TABLE

Expospot 70 adjustable

EXPOSPOT 70 ADJUSTABLE RA90 3000K MB BLACK
2070027

General data

Product name	EXPOSPOT 70 ADJUSTABLE RA90 3000K MB BLACK
Technology	LED
Cap/Base	N/A
Housing	Aluminium
Mount	Ceiling recessed mounting
Fixture rating	Enclosed
General application	Hospitality, Museums & Galleries, Retail
Operating temperature range (°C)	1°C...+25°C
Performance ambient temperature Tq (°C)	25
ETIM Class	EC001744
Warranty	5 years

Optical data

Fixture luminous flux (lm)	1793
Luminaire efficacy (lm/W)	85
LOR (%)	100
Colour temperature (K)	3000
Light colour	Warm White
CRI (Ra)	90
Colour Variation Initial (SDCM)	SDCM3
Beam Angle (°)	42
Distribution type	Symmetric
Photobiological Risk Group	RG1

Electrical data

Total power consumption (W)	21
Primary Supply/Product voltage - min (V)	220
Primary Supply/Product voltage - max (V)	240
Lamp power factor	0.95
THD (at 230 V, 50 Hz, full load, at 100% dimming level) xx.x %	20
Electrical protection	Class II
Control gear required	No
Control gear type	LED driver constant current
Control gear mounting	Remote
Dimmable	No
Dimming method	N/A
Drive current (mA)	300
Inrush Current (A)	17
Inrush Duration (µs)	199
Glow Wire Test (°C)	850
Energy Efficiency Class (A->G) of contained light source	E
Nominal Frequency (Hz)	50/60Hz
Max. products per 10A C Breaker	31
Max. products per 13A C Breaker	41
Max. products per 16A C Breaker	51

Expospot 70 adjustable

EXPOSPOT 70 ADJUSTABLE RA90 3000K MB BLACK

2070027

Max. products per 20A C Breaker	70
Max. products per 10A B Breaker	19
Max. products per 13A B Breaker	25
Max. products per 16A B Breaker	31
Max. products per 20A B Breaker	42
Connectable conductor cross section - Min (mm ²)	0.5
Connectable conductor cross section - Max (mm ²)	2.5

Lifetime data

Lifespan L70 B50	100000
Lifespan L80 B20	100000
Lifespan L90 B10	54500

Physical data

Housing colour	Black
IP rating	IP20
IK rating	IK02
Diffuser finish	Other
Diffuser material	Other
Reflector finish	Other
Nominal Product Height (mm)	101
Nominal Product Diameter (mm)	137
Cutout Dimensions (W x L in mm or Diameter in mm)	126
Weight (kg)	0.52
Recessed Depth (mm)	101

Packaging

Single packaging type	Carton
Product EAN number	5025768700271
Packaging single length / height (cm)	18.0
Packaging single width (cm)	18.0
Packaging single depth (cm)	16.0
DUN14 (outer)	05025768700271
Units per outer package	1
Packaging outer length / height (cm)	18.0
Packaging outer width (cm)	18.0
Packaging outer depth (cm)	16.0

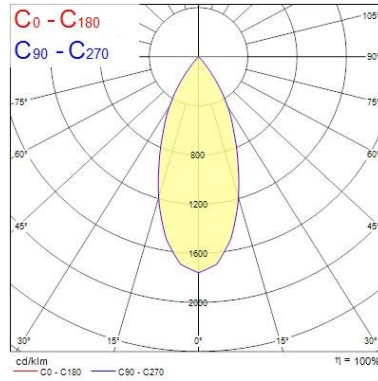
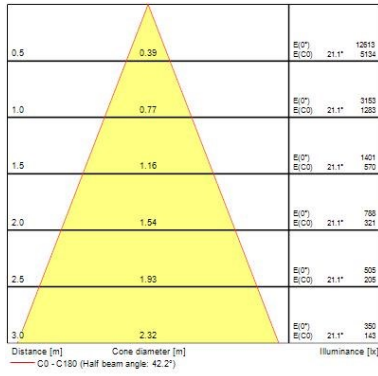
Safety data

Optimal operating condition (°C)	1-25
----------------------------------	------

PHOTOMETRY

Expospot 70 adjustable

EXPOSPOT 70 ADJUSTABLE RA90 3000K MB BLACK
2070027



TECHNICAL DRAWINGS

