

## Flush mounted installation box

Part no. 41404

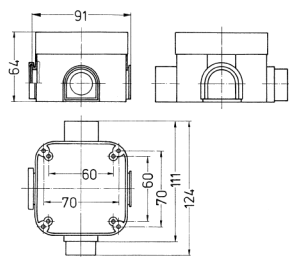


- for Cepex CEE receptacles 16 A and 32 A and Cepex receptacles SCHUKO®
- can be combined with all Cepex panel mounted receptacles

## Technical specifications

Weight	93 g
Certifications	VDE

## Drawing



Drawing  
1 MB 334  
Dim. in mm