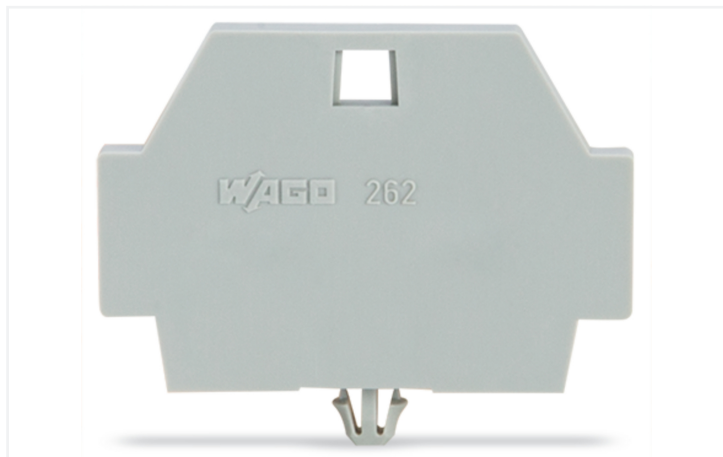


Data Sheet | Item Number: 262-371
End plate; with snap-in mounting foot; gray

<https://www.wago.com/262-371>



Color: ■ gray

Physical data

Width	3 mm / 0.118 inches
Height	23 mm / 0.906 inches
Depth	33.4 mm / 1.315 inches

Material data

Note (material data)	Information on material specifications can be found here
Color	gray
Material group	I
Insulation material (main housing)	Polyamide (PA66)
Flammability class per UL94	V0
Fire load	0.055 MJ
Weight	1.6 g

Environmental requirements

Processing temperature	-35 ... +85 °C
Continuous operating temperature	-60 ... +105 °C

Commercial data

Product Group	9 (Std Chassis Mt Blocks)
PU (SPU)	200 (50) pcs
Packaging type	Box
Country of origin	CH
GTIN	4017332143066
Customs tariff number	85389099990

Product Classification	
UNSPSC	39121702
eCl@ss 10.0	27-14-11-33
eCl@ss 9.0	27-14-11-33
ETIM 9.0	EC000886
ETIM 10.0	EC000886
ECCN	NO US CLASSIFICATION

Environmental Product Compliance	
RoHS Compliance Status	Compliant, No Exemption

Downloads

Environmental Product Compliance

Compliance Search	
Environmental Product Compliance 262-371	↓

Documentation

Bid Text			
262-371	19.02.2019	xml 2.53 KB	↓
262-371	17.08.2017	doc 23.00 KB	↓

CAD/CAE-Data

CAD data	
2D/3D Models 262-371	↓

CAE data	
EPLAN Data Portal 262-371	↓
WSCAD Universe 262-371	↓
ZUKEN Portal 262-371	↓

1 Compatible Products

1.1 Optional Accessories

1.1.1 Installation

1.1.1.1 Mounting accessories



Item No.: 209-120

Mounting foot; can be snapped on terminal blocks with snap-in mounting foot; for mounting on relay-modules; 6.4 mm wide; gray