

## Grounding-type panel mounted receptacle

Part no. 11182

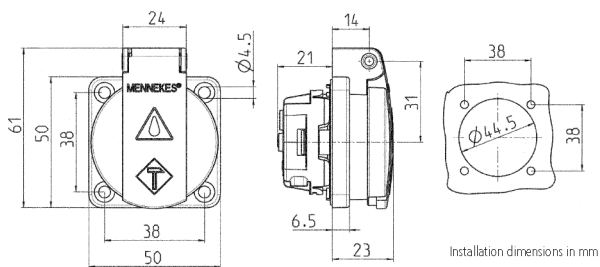


- French-belgian standard
- with hinged lid
- 3 screw terminals as connecting terminals for 1.5 - 2.5 mm<sup>2</sup>
- other colours on request

## Technical specifications

Ampere	16 A
Poles	2 p+PE
Voltage	230 V
Connection technology	Screw terminals
Contact	standard
Protection type	IP44
Shutter	true
Flange	50x50 mm
Fixing hole	38x38 mm
Weight	40 g

## Drawing



Drawing  
1 MB 410

Dim. in mm