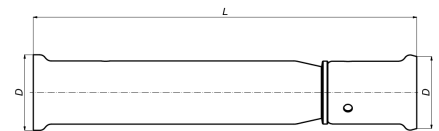


52P16: Easymounting/repair fitting 16



Commercial information

This fitting is the solution when you - accidentally - punctured a pipe. With this sleeve fitting you can quickly repair the pipe. Chip away, remove the leaking pipe, connect the fitting on both ends and press. Done.

Basic unit dimensions

Height	16 mm
Length	126 mm
Width	16 mm
Net weight	0.109 kg

Certificates

ATG, DVGW Wasser, ETA, KIWA, ÖVGW Wasser, WRAS, KOMO, STF, ÖN EN 21003-2/-3, GOST-R, ITC, TSU, QB (CSTBat), AFNOR, ACS, PZH, DNV-GL, Sans 21003, Kontrol Biro, EMI

Applications

Potable water, Heating, Compressed air, Cooling, Sanitary

Solutions

Building installations, Industry, Utility, Shipbuilding

Technical characteristics

Material connection 1	Brass	Bend radius	0 Millimetre
Material quality connection 1	CuZn40Pb2 (CW617N)	Outer pipe diameter connection 1	16 Millimetre
Surface protection connection 1	Untreated	Outer pipe diameter connection 2	16 Millimetre
Surface treatment connection 1	Untreated	Length	126 Millimetre
Material connection 2	Brass	Length of connection 1	20.8 Millimetre
Material quality connection 2	CuZn40Pb2 (CW617N)	Working length connection 1	20.8 Millimetre
Surface protection connection 2	Untreated	Length of connection 2	99.7 Millimetre
Surface treatment connection 2	Untreated	Working length connection 2	99.7 Millimetre
Shape	Straight	Wrench width	0 Millimetre
Reducing	✗	Wrench width union nut	0 Millimetre
Eccentric	✗	Medium temperature (continuous)	-10 70 Degrees celsius
System specific	✓	Max. operating pressure at 20 °C	16 Bar
Connection 1	Press sleeve	Standard Dimension Ratio (SDR)	0
Contour code connection 1	TH		
Connection 2	Press sleeve		
Contour code connection 2	TH		
Main colour fitting	Brass		
Material sealing	Ethylene-propylene diene monomer rubber (EPDM)		
With buffer stud	✓		
High tensile strength	✗		
With thermal insulation	✗		
Ring stiffness class	Other		
With sealing rings/gaskets	✓		
Capped	✗		
With drain valve	✗		
With de-aerator	✗		
FM quality mark	✗		
LPCB quality mark	✗		
ULC quality mark	✗		
UL quality mark	✗		
DIN-CERTCO certificate	✗		
VdS quality mark	✗		
With approval for TÜV	✗		
DVGW quality mark for gas	✗		
DVGW quality mark for water	✓		
KIWA certified	✓		
Gastec QA mark	✗		
KOMO certified	✓		
Type approval according to BBR/EKS	✗		