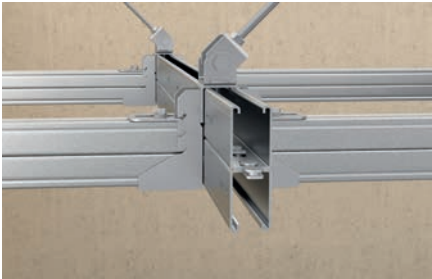


Channel connector FDCC

Channel connector for easy preparation of FUS double channels

4



FUS double channel with channel connector

Applications

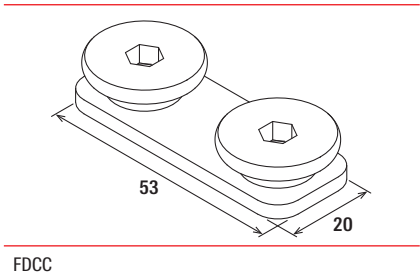
- Easy construction of double channels made from the FUS channel assortment.
- Suitable for FUS channels FUS 41 and FUS 62 with thickness 2,0 and 2,5 mm.
- The connection of two single channels is made with the channel connector inside the channel slots.
- Each double channel has to be equipped with an FDCC at both ends and additional FDCCs in the given installation distance as per load chart.
- For use in dry interior areas.

Advantages

- Easy connection of single channels back to back to build double channels.
- Simple solution to create individual double channels on job site.

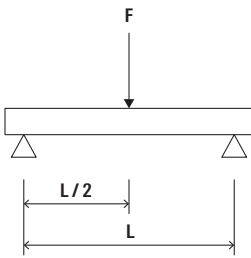
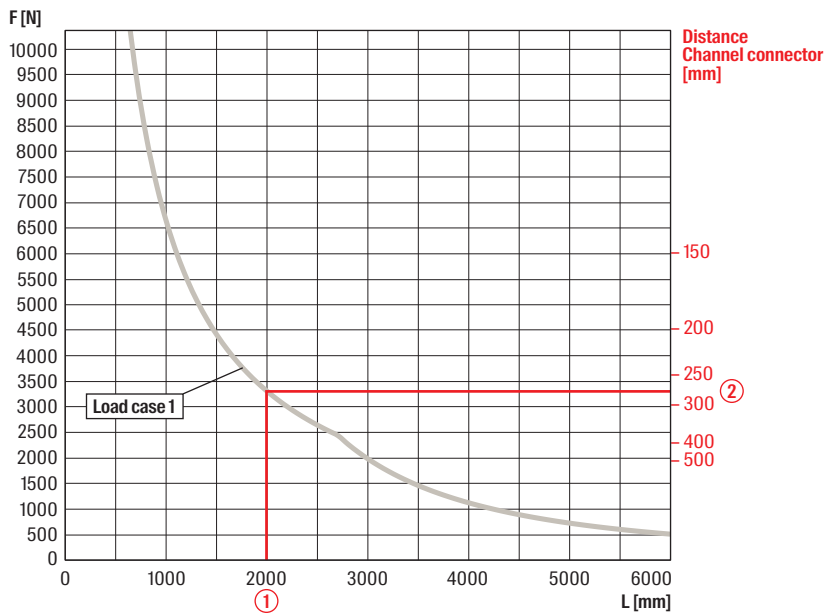
Properties

- Material base plate: JIS G3131-SPHE (similar to DD13 acc. to DIN EN 10111, material no. 1.0335)
- Material screw: steel grade 8.8
- Zinc plating: electro zinc-plated



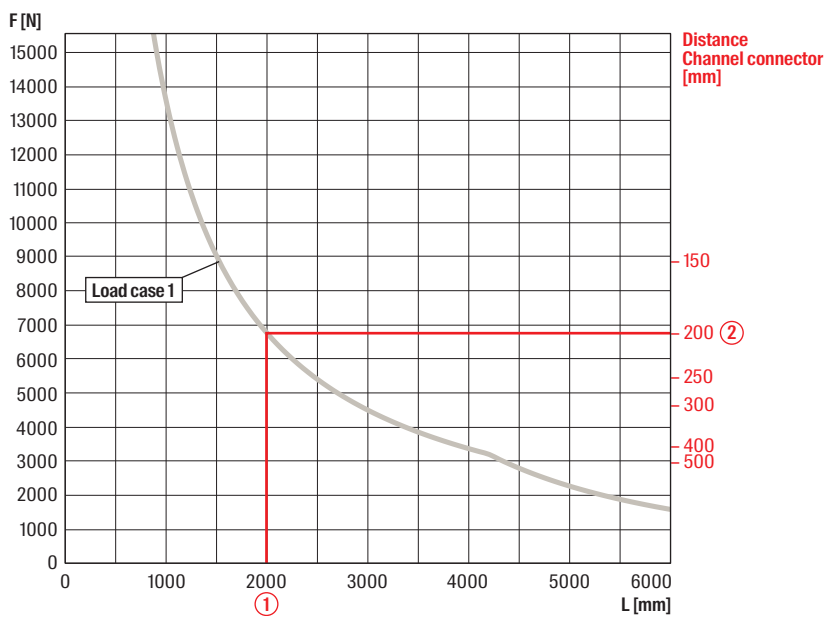
Technical data

	Item no.	Thread A	Drive	Tightening torque T_{inst} [Nm]	Sales unit [pcs]
Item					
FDCC	546148	M10	Hexagon socket 5 mm	25	100

Load case 1**FUS 41D/2,0 - 2,5**

① Length of channel, i.e. 2000 mm for loadcase 1 (single load centric)

② Distance of channel connector (for intermediate values use the lower value, i.e. 250 mm)

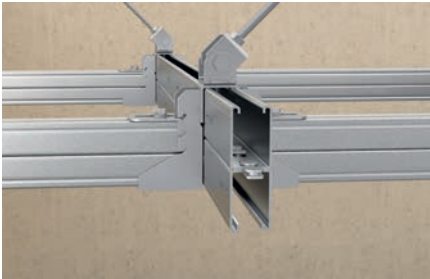
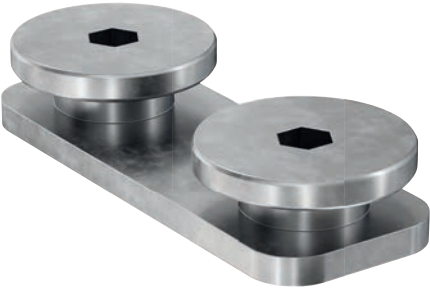
FUS 62D/2,5

① Length of channel, i.e. 2000 mm for loadcase 1 (single load centric)

② Distance of channel connector (for intermediate values use the lower value)

Channel connector FDCC zl

Channel connector FDCC zl - For easy preparation of FUS double channels



FUS double channel with channel connector

Applications

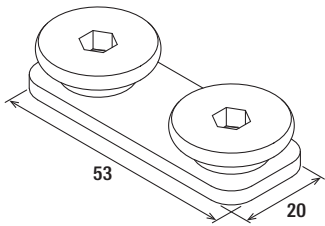
- Easy construction of double channels made from the FUS channel assortment.
- Suitable for FUS channels FUS 41 and FUS 62 with thickness 2,0 and 2,5 mm.
- The connection of two single channels is made with the channel connector inside the channel slots.
- Each double channel has to be equipped with an FDCC at both ends and additional FDCCs in the given installation distance as per load chart.
- For indoor and outdoor application.

Advantages

- Easy connection of single channels backside to backside to build double channels.
- Simple solution to create individual double channels on job site.

Properties

- Material base plate: JIS G3131-SPHE (similar to DD13 acc. to DIN EN 10111, material no. 1.0335)
- Material screw: steel grade 8.8
- Surface coating: zinclamella

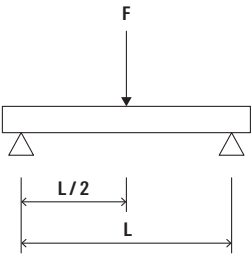


FDCC

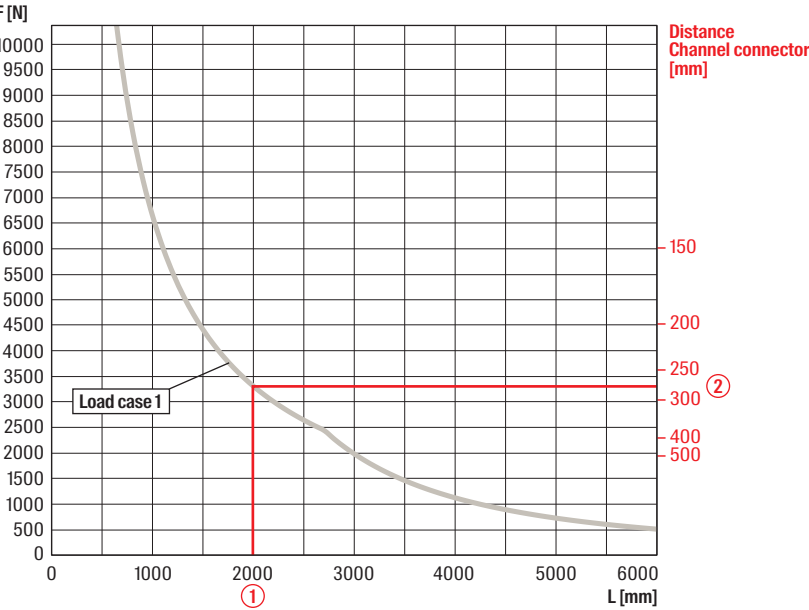
Technical data

Item	Item no.	Thread A	Drive	Tightening torque T_{inst} [Nm]	Sales unit [pcs]
FDCC zl	557278	M10	Hexagon socket 5 mm	25	100

Load case 1

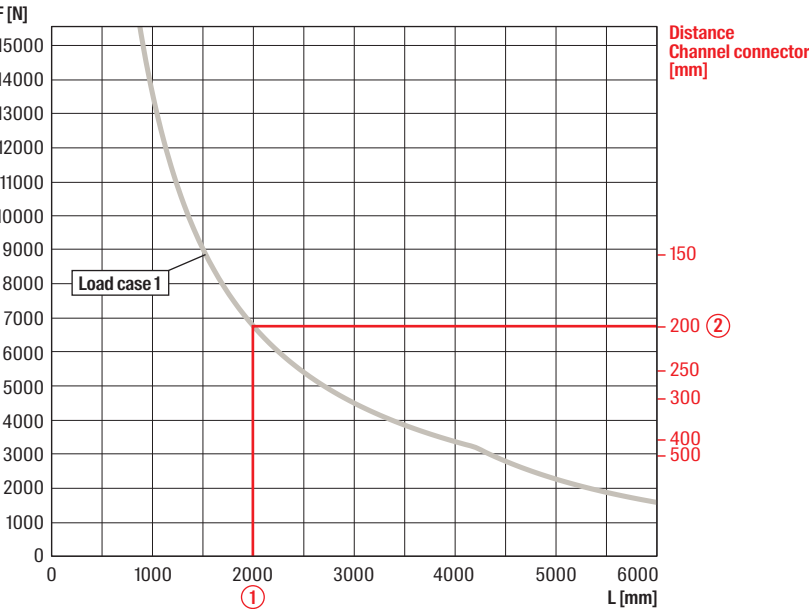


FUS 41D/2,0 - 2,5



- ① Length of channel, i.e. 2000 mm for loadcase 1 (single load centric)
- ② Distance of channel connector (for intermediate values use the lower value, i.e. 250 mm)

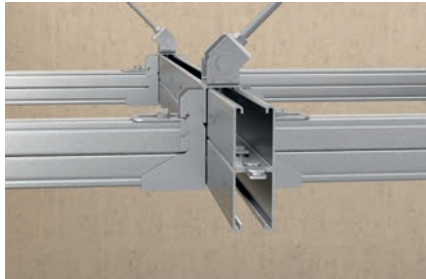
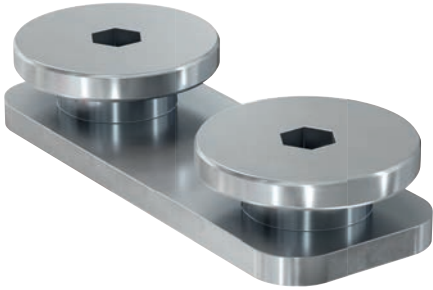
FUS 62D/2,5



- ① Length of channel, i.e. 2000 mm for loadcase 1 (single load centric)
- ② Distance of channel connector (for intermediate values use the lower value)

Channel connector FDCC A4

FDCC A4 channel connector - For easy preparation of FUS double channels



FUS double channel with channel connector

Applications

- Easy construction of double channels made from the FUS channel assortment.
- Suitable for FUS channels FUS 41 and FUS 62 with thickness 2,0 and 2,5 mm.
- The connection of two single channels is made with the channel connector inside the channel slots.
- Each double channel has to be equipped with an FDCC at both ends and additional FDCCs in the given installation distance as per load chart.
- For indoor and outdoor applications and in environments with high stress to components due to corrosion

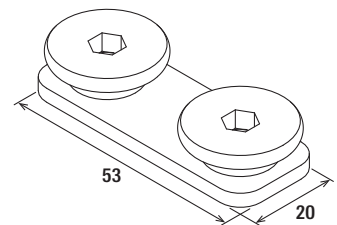
Advantages

- Easy connection of single channels backside to backside to build double channels.
- Simple solution to create individual double channels on job site.

Properties

- Material base plate: A4 stainless steel (material no. 1.4401)
- Material screw: A4 stainless steel (material no. 1.4401)

12

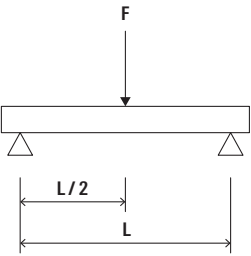


FDCC

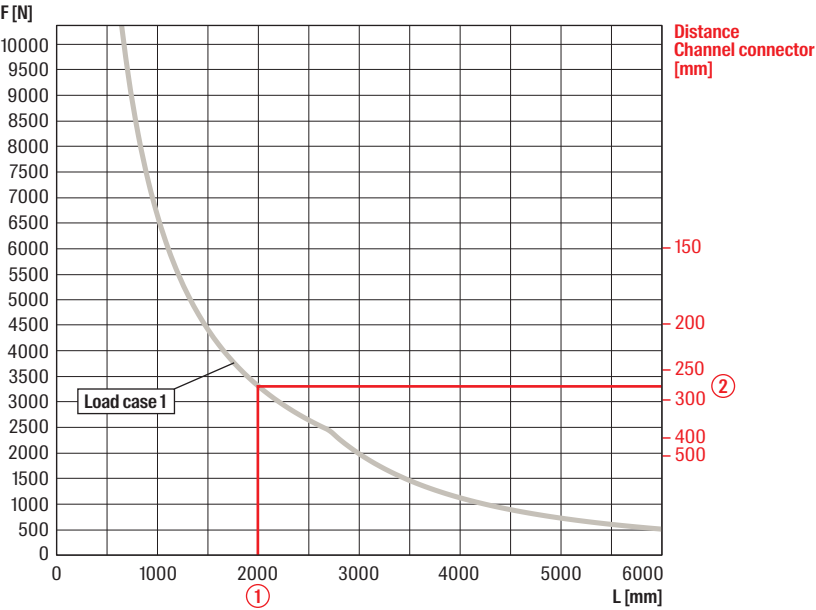
Technical data

Item	Item no.	Thread A	Drive	Tightening torque T_{inst} [Nm]	Sales unit [pcs]
FDCC A4	557376	M10	Hexagon socket 5 mm	25	100

Load case 1

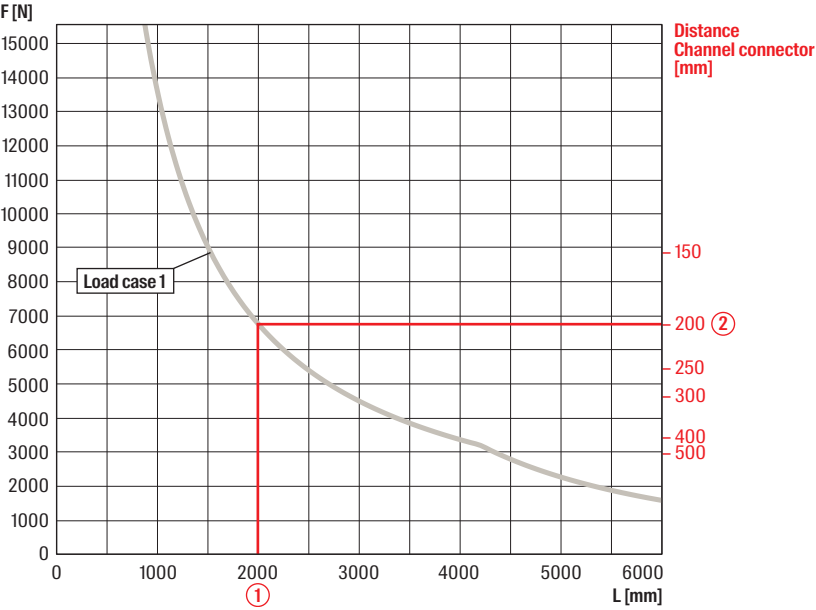


FUS 41D/2,0 - 2,5



- ① Length of channel, i.e. 2000 mm for loadcase 1 (single load centric)
- ② Distance of channel connector (for intermediate values use the lower value, i.e. 250 mm)

FUS 62D/2,5



- ① Length of channel, i.e. 2000 mm for loadcase 1 (single load centric)
- ② Distance of channel connector (for intermediate values use the lower value)