

Data Sheet | Item Number: 207-5465/316-000

cable repair set; for multicore cables; Straight-through; with glue; Cable diameter 8 - 24 mm; with enclosed splicing connectors; medium-walled; black

<https://www.wago.com/207-5465/316-000>



Cable Repair Kit for Use in Fixed Installations

The cable repair kit is unsuitable for use under-water or in the ground, as there is no longitudinal water tightness.

The set includes:

- 1 x shrink tube, 24°mm diameter, 4:1 shrink factor, 160°mm long, black
- 10 x 2773-2401 Inline Splicing Connector, for solid and stranded conductors

This item includes:



Item No.: [2773-2401](#)

PUSH WIRE® Inline Splicing Connector; for solid and stranded conductors; max. 4 mm²; 2-conductor; transparent housing; Transparent cover; Surrounding air temperature: max 85°C (T85); 4,00 mm²; transparent

10

Electrical data

Ratings per IEC/EN		Ratings per UL	
Ratings per	EN 60664	Approvals per	UL 486C
Nominal voltage (II/2)	450 V	Rated voltage UL (Use Group C)	600 V
Rated impulse withstand voltage (II/2)	4 kV	Rated current UL (Use Group C)	20 A
Rated current	32 A		

Connection data

Connection 1	
Solid conductor	0.75 ... 4 mm² / 18 ... 12 AWG
Stranded conductor	1.5 ... 4 mm²
Strip length	10 ... 11 mm / 0.39 ... 0.43 inches

Mechanical data

Sheathed cable diameter (min.)	8 mm
--------------------------------	------

Material data

Note (material data)	Information on material specifications can be found here
Color	black
Insulation material (main housing)	Polyolefin
Fire load	0.38 MJ
Weight	21.9 g
Inner diameter D before shrinkage	24 mm
Inner diameter D after shrinkage	6 mm
Shrink temperature (min.)	110 °C
Shrink temperature (max.)	200 °C
Dielectric strength per ASTM D 2671	15

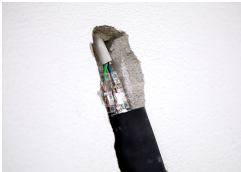
Environmental requirements	
Continuous operating temperature	-55 ... +105 °C

Commercial data	
PU (SPU)	18 (1) pcs
Packaging type	Box
Country of origin	QU
GTIN	4066966682984
Customs tariff number	85369010000

Environmental Product Compliance	
RoHS Compliance Status	Compliant,No Exemption

Installation Notes

Application



Drilled cable.	Connect the cable using the cable repair kit.	Close the damaged area discreetly.
----------------	---	------------------------------------

Application		
		
Milled cable.	Connect the cable using the cable repair kit.	Heat the shrink tube and properly reclose the damaged area.