

## Data Sheet | Item Number: 282-368

Step-down cover plate; 1 mm thick; in connection with 3-conductor 282-681 terminal blocks; orange

<https://www.wago.com/282-368>



Color: ■ orange

Similar to illustration

### Physical data

Width	1 mm / 0.039 inches
Height	92.8 mm / 3.654 inches
Depth	23.3 mm / 0.917 inches

### Material data

Note (material data)	<a href="#">Information on material specifications can be found here</a>
Color	orange
Material group	I
Insulation material (main housing)	Polyamide (PA66)
Flammability class per UL94	V0
Fire load	0.068 MJ
Weight	2.3 g

### Environmental requirements

Processing temperature	-35 ... +85 °C
Continuous operating temperature	-60 ... +105 °C

### Commercial data

Product Group	1 (Rail Mounted Terminal Blocks)
PU (SPU)	100 (25) pcs
Packaging type	Box
Country of origin	DE
GTIN	4017332337281
Customs tariff number	85389099990

**Product Classification**

UNSPSC	39121702
eCl@ss 10.0	27-14-11-33
eCl@ss 9.0	27-14-11-33
ETIM 9.0	EC000886
ETIM 10.0	EC000886
ECCN	NO US CLASSIFICATION

**Environmental Product Compliance**

RoHS Compliance Status	Compliant, No Exemption
------------------------	-------------------------

**Downloads**

**Environmental Product Compliance**

Compliance Search

Environmental Product Compliance 282-368	↓
--	---

**Documentation**

Bid Text

282-368	19.02.2019	xml 2.49 KB	↓
282-368	02.05.2017	doc 23.50 KB	↓

**CAD/CAE-Data**

CAD data

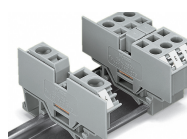
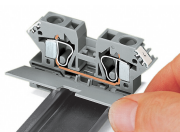
2D/3D Models 282-368	↓
----------------------	---

CAE data

EPLAN Data Portal 282-368	↓
WSCAD Universe 282-368	↓
ZUKEN Portal 282-368	↓

**Installation Notes**

**Installation**



Snapping a cover plate onto open side of terminal block.

A cover plate must also be snapped onto the other side of the larger terminal block.

Subject to changes. Please also observe the further product documentation!

Current addresses can be found at: [www.wago.com](http://www.wago.com)