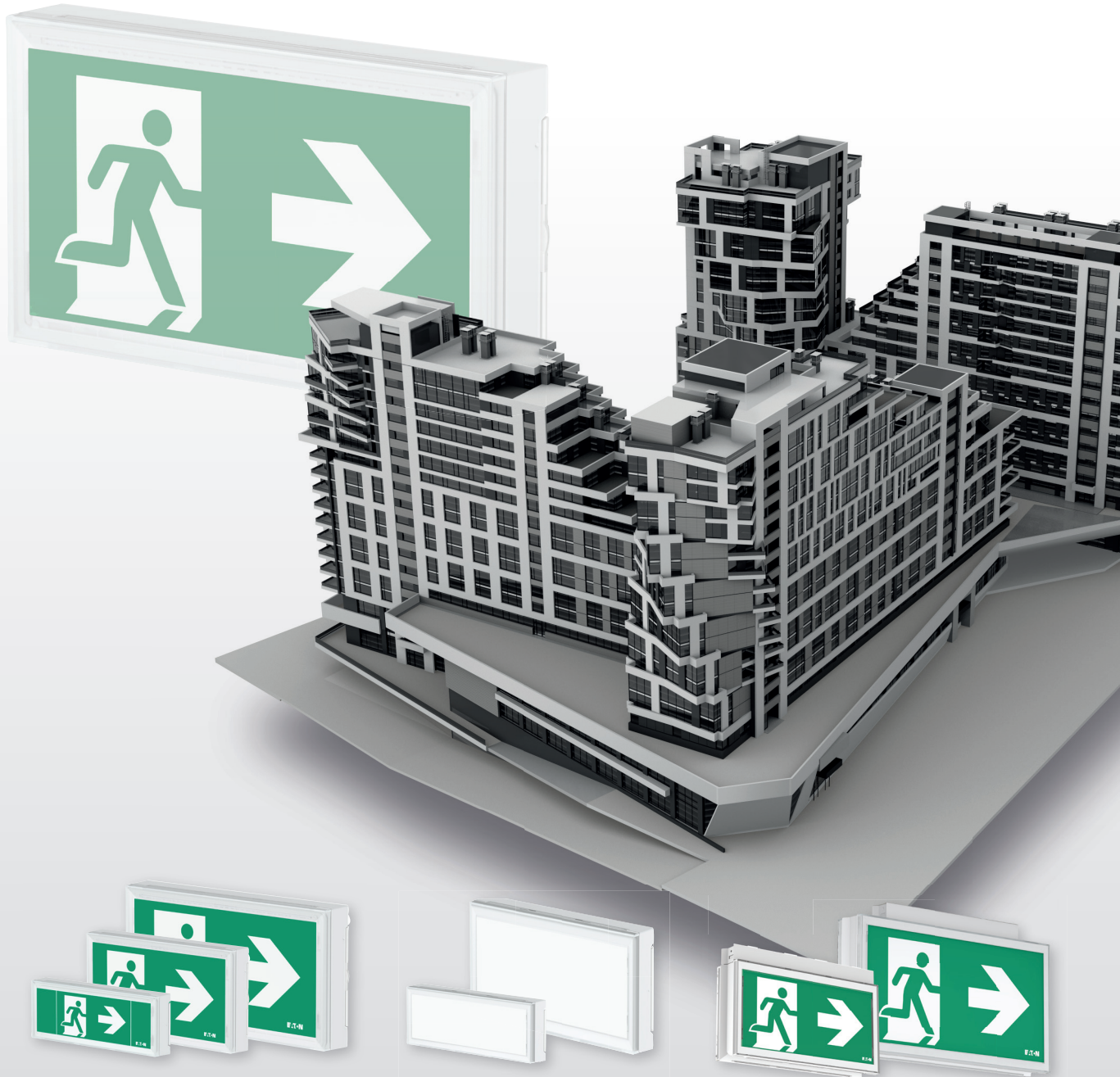


From car park to rooftop

One look, Hundreds of solutions



Emergency Lighting you can rely on

One look, one product family,
meet hundreds of projects requirements

One look and one product family for hundreds of solutions

In an emergency, exit signage and safety lighting is vital to guide a building's occupants to safety.

Yet a project may have different requirements for signage and safety lighting. Eaton's FlexiTech ED and SE – including EW and EC exit signs for walls and ceilings plus SU safety lights with uniform illumination – bring new opportunities for emergency lighting designers and installers in diverse settings by eliminating complexity and saving time.

Whatever the project, FlexiTech can offer multiple options. FlexiTech SU is an innovative safety light. FlexiTech EW exist in 3 sizes, and EC in 2 sizes to meet your exit signage requirements.

CG-S and CGLine+ variants bring you even more peace of mind, making monitoring and visualization of the system easier and evacuation safer thanks to new Increased Affordance functionality (CGLine+).





With FlexiTech consistent range, exacting requirements quickly and efficiently has never been so easy

Exit sign - FlexiTech EW
(Exit sign **W**all mounting)

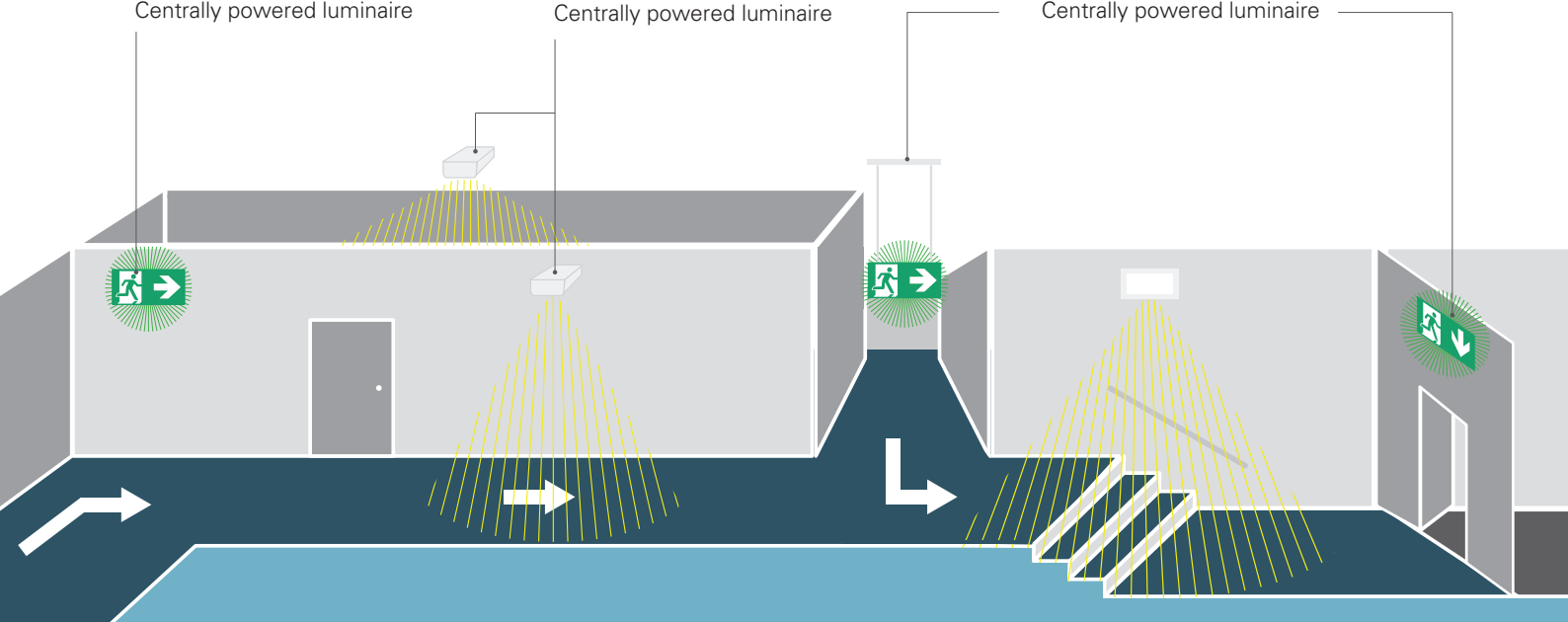
12m, 20m, 30m viewing distance
IP43 / IP66
Self-contained or
Centrally powered luminaire

Safety light - FlexiTech SU
(Safety light with **U**niform illumination)

Small and Large
IP43 / IP66
Self-contained or
Centrally powered luminaire

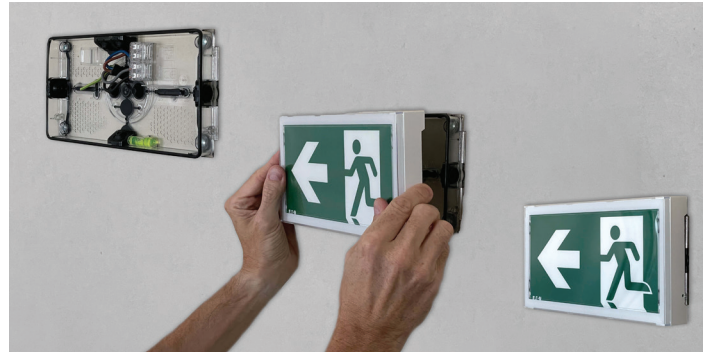
Exit sign - FlexiTech EC
(Exit Sign **C**eiling mounting)

20m, 30m viewing distance
IP43 / IP65
Self-contained or
Centrally powered luminaire



FlexiTech first fix baseplate

- Baseplate is **fixed to the support** and used for electrical connections.
- The luminaire **snaps onto it**
- Baseplate can be installed **very early** in the construction phase.
- Luminaire **can be clipped at the end of the project** to **prevent risk of damage** (shock, paint, repetitive mains failure, stealing ...).
- Luminaire can be **easily unclipped to check configuration and wiring**.



7 innovations that make FlexiTech easier to install

Slotted holes for quick fixing and easy adjustment

Screwless terminal blocks with double connection

9 cables entries in rubber
(4 at the back, 2 at the top, 1 at the bottom and 2 at the side)
Cables :
6 <math>\lt; \varnothing < 13,5\text{mm}</math>
No plastic parts to break when accessing from the back

Possibility of direct mounting on electrical boxes ($\varnothing 67\text{ mm}$)

Spirit level for perfect horizontal alignment

Transparent baseplate with a large working space for easy installation and replacement of existing products

IP66 version only
Easy and fast installation without cable glands
Same look as the IP43 version

Entries made of a special thermoplastic elastomer with specific compound developed by automotive industry

Cable entries on sides have an innovative design with 2 membranes:

- The outside membrane protects against water jet pressure
- The inner membrane perfectly surrounds the cable for enhanced sealing

5 features supporting easy maintenance



1. Easy separation of the transparent baseplate from the housing
2. Maximum accessibility of components makes easier replacement of battery pack
3. Honeycomb footprint zones enable easy reuse of existing fixing holes
4. EATON magnet can be used to :
 - Carry out manual tests
 - Configure the lighting level in mains mode (30% / 70% / 100%)
5. Renovation plate

Coloured accessories for better integration



Metal cover



Recess kit

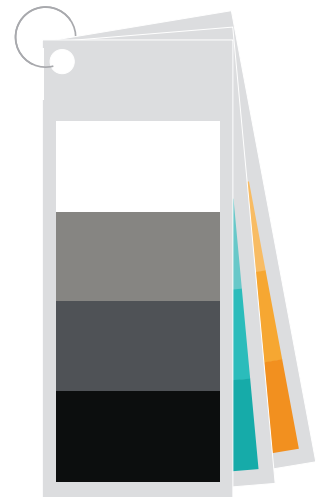


White
RAL9003

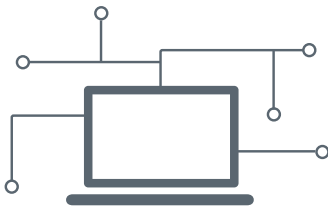
Silver gloss
RAL9007

Dark grey
RAL7015

Black mat
RAL9005



Keeping your system operational Limiting operation and maintenance costs



The use of LEDs, automatic testing and individual monitoring devices (on CGLine+ versions) significantly reduces the operating and maintenance costs of the installation.

- Blocking mode and rest mode to keep battery fully loaded during site works or when the building is vacant.
- Compatible with VisionGuard visualization software
- Can be added to current BMS connection solutions



VisionGuard
visualization software

A product made to last



- Robust construction (**IK07**), **high plastic quality** and **rubber fixing point** (to absorb shock energy) make FlexiTech **resistant to shocks** which might be caused by people
- Rubber and TPE components **close all possible space between parts**, minimising bug and dust penetration into the housing
- Latest generation of LEDs, **good heat dissipation**, and **efficient use of power**. CGLine+ variants are designed to offer **10 years lifespan** - proven via 1 year aging test @70°C ambient temperature
- Exit signs inlay legends are **well protected against scratches and dirt**

Protecting lives and the environment

- Reduced impact on the environment throughout its lifecycle (design, manufacture, use, recycling)
- Conformity with REACH and ROHS
- Batteries without cadmium
- Latest generation of high-performance LEDs / Low power consumption
- Brightness in mains mode can be also adjusted (30% / 70% / 100%) on CGLine+ variants
- Use in Maintained and Non-Maintained mode (self-contained)
- Monitored solutions (CG-S and CGLine+) enable system switch off when the business is idle, saving on energy costs



FlexiTech - Exit Sign



FlexiTech EW Exit sign Wall mounted

Single sided
12m, 20m, 30m viewing
distance versions

- Centrally powered and self-contained
- Unobtrusive appearance, slim housing (34 to 38mm)
- Robust construction, IK07



FlexiTech EC Exit sign Ceiling mounted

Single or double-sided
20m and 30m viewing
distance versions

- IP43 and waterproof versions
- Delivered with exit legends
- First fix baseplate

Harmonious integration into the building

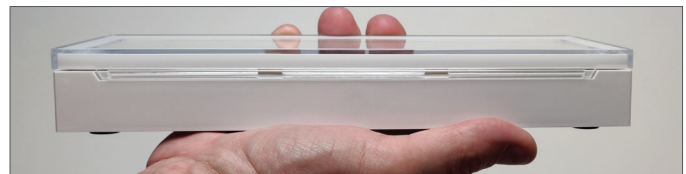


• **One look for all variants** thanks to double membrane technology. IP43 and waterproof versions have same look and dimensions

• **Unobtrusive design and slim housing** make the luminaires **very discreet** in the architecture thanks to light guide technology. Their thickness has been optimized (34 to 38mm)

• **Harmonious appearance** building-wide (from the car park to the roof top)

• **Same high quality of illumination** on all exit signs, whatever the size, throughout the building.



Saving time for what matters



- Delivered with non-adhesive exit legends for **most of existing configurations**
- List of **main accessories** displayed on carton box
- Self-contained luminaires enable **easy duration configuration** (one to eight hours)
- Possibility to **configure the lighting level** in mains mode with Self-Contained luminaires (CGLine+ versions)

Go further with additional options...



Recess kits

- Low profile for full recessed ability
- Cutting template included for quick implementation
- Available for all formats
- Coloured options available



Suspension kit 50cm + FlexiTech EC 20m



Suspension kit 150cm + FlexiTech EC 30m



Wall bracket 20m + FlexiTech EC 20m

Wall bracket 30m + FlexiTech EC 30m

Suspension kit

- Available in 50 or 150 cm
- Compatible with FlexiTech EC 20 or 30m versions
- Coloured options available

Wall bracket

- Compatible with FlexiTech EC 20 or 30m versions
- Coloured options available

Custom designed pictograms

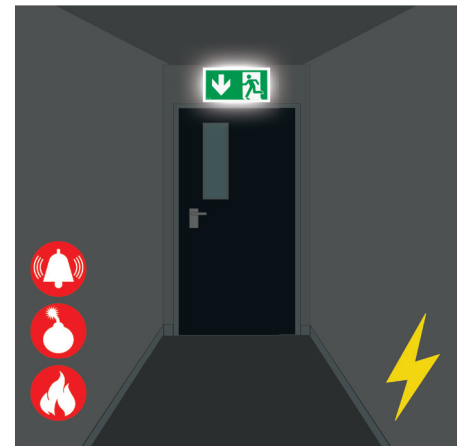
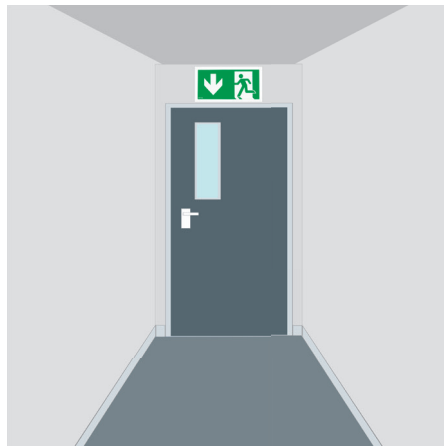


Unmissable exit signs...



... thanks to Increased Affordance

Increased Affordance function (IA) available on CGLine+ versions, makes exit signs more recognizable when evacuation is needed, even in a very brightly lit environment.



In mains operation, **uniform illumination** of the pictograms facilitates the identification of emergency exits.

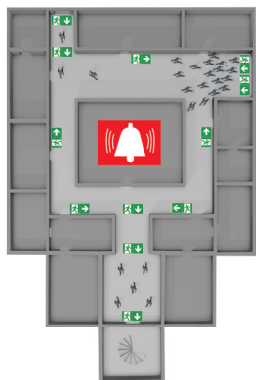
An evacuation order (fire, danger or climatic risk) triggers the **Increased Affordance** function which enables better recognition of the escape route through blinking or pulsing.




In case of power failure, the pictograms are perfectly legible **without risk of glare** for users.

... for safer evacuation

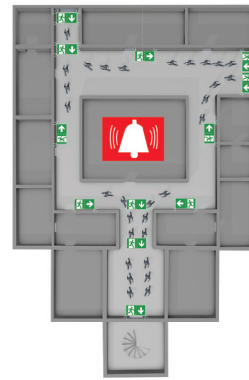
Without IA



Risk of congestion at entry points of the building.

 Difficult for those with impaired hearing who may not hear any accompanying vocal instructions.

With IA



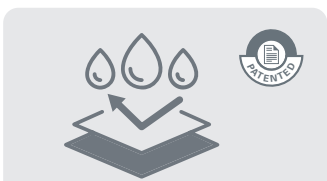
The animation of the safety pictograms (blinking) facilitates the identification of ALL available escape routes and exits.



FlexiTech EW CGLine+ - Datasheet



FlexiTech EW 30m/20m/12m viewing distance



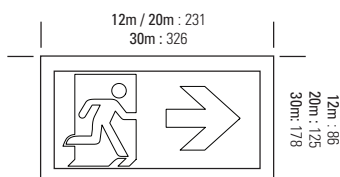
IP66 version

Easy and fast installation without cable glands
Same look as the IP43 version

Entries made of a special thermoplastic elastomer with specific compound developed by automotive industry
Cable entries on sides have an innovative design with 2 membranes:

- The outside membrane protects against water jet pressure
- The inner membrane perfectly surrounds the cable for enhanced sealing

Dimensions (mm)



12m / 20m : 34
30m : 38



FlexiTech EW CGLine+

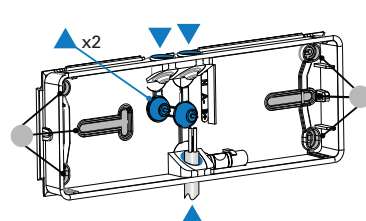
- Self-contained luminaire with Automatic Test and individual monitoring (CGLine+) for reduced inspection effort
- Single sided exit sign with light guide technology for wall mounting
- Robust construction IK07 for reliable operation even in difficult environments
- Available with 12, 20 and 30m viewing distance and protection degrees IP43 and IP66
- Non-obtrusive design and with a slim housing (34 / 38 mm)
- Including inlay legends for commonly used configurations reducing the logistic effort to have the right pictograms on site
- The inlay legends are well protected against scratches and dirt
- Increased affordance functionality for better visibility of the exit sign and faster evacuation
- Optimal recognition via high luminance of white contrast colour > 500 cd/m² according to DIN4844-1 / ISO 3864-1 (for bright surroundings), and perfect uniformity $L_{min}/L_{max} > 0.8$
- Brightness selectable in two steps in mains operation (eg. theater: 50 cd/m², Supermarket: 500 cd/m²) and additional setting (30%, 70%, 100%)
- Selectable operating time (1/2/3/8h operation)
- Selectable operation mode (Maintained or Non-Maintained) via switch input
- Fast installation and effortless wiring thanks to: cable entries in rubber, large space for cabling, screwless terminal blocks, integrated spirit level and first fixed base plate to snap on the housing without any tool
- Transparent base plate with honeycomb footprint for easy replacement of existing products (IP4x use only)
- Low eco-footprint thanks to its eco-designed, low consumption and Lithium battery
- Simple fault analysis and status display via bicolor LED, testing button (magnet) and supervision solutions
- Lifespan: 10 years without component replacement, proven with 1 year aging test @70°C ambient temperature
- Complete range of accessories (recess kit, wire guard)
- Coloured accessories available on demand, custom designed pictograms also available

Pictogram	
Viewing distance	12m, 20m or 30m
Included labels	4 Non-adhesive Exit legends (D,U,R,L) ISO format
Luminous flux Φ_e/Φ_N at end of rated operating time	100% @ 1h, 50% @ 2h, 30% @ 3h, 16% @ 8h
Illumination in mains mode	50 or 500 cd setting via switch, and possible additional setting via magnet (30%, 70%, 100%)
Operation	Maintained / Non-Maintained (via switch input)
Duration	Configurable 1/2/3/8 hours
Testing system	Automatic Test in compliance with EN 62034 Connection possible to the CGLine+ monitoring system
Housing	
Type of mounting	Wall surface-mounting
Material	Polycarbonate
Colour	White RAL9003
Degree of protection	IP43 or IP66 / IK07
Terminals	Screwless terminals for flexible and rigid wires From 0,5 to 2,5 mm ²
Connection voltage	220 - 240 V AC, 50/60 Hz
Permissible ambient temperature	5°C to 45°C, 0°C to 45°C in maintained mode. 35°C max for 10 years lifetime.
Battery	LiFePO4
Light source	LED, Lifespan 100 000h
Insulation Class	II

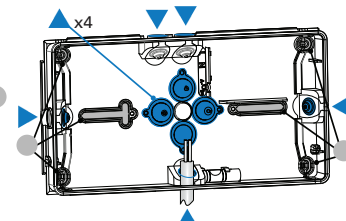
Ordering details

Order code	Viewing distance	IP	IK	Illumination in mains mode (cd)	Operation	Consumption		Battery	Weight (kg)
						NM W/VA	M 500 cd/m ² W/VA		
FT1EW4ICGL18	12m	43	07	50 or 500	MNM	0,3W / 1 VA	1,1W / 2,5 VA	FT-BATLL1	0,34
FT1EW4ICGL18IP	12m	66	07	50 or 500	MNM	0,3W / 1 VA	1,1W / 2,5 VA	FT-BATLL1	0,34
FT2EW4ICGL18	20m	43	07	50 or 500	MNM	0,3W / 1 VA	1,6W / 3,7 VA	FT-BATLL2	0,45
FT2EW4ICGL18IP	20m	66	07	50 or 500	MNM	0,3W / 1 VA	1,6W / 3,7 VA	FT-BATLL2	0,45
FT3EW4ICGL18	30m	43	07	50 or 500	MNM	0,3W / 1 VA	2,5W / 5,5 VA	FT-BATLL2	0,97
FT3EW4ICGL18IP	30m	66	07	50 or 500	MNM	0,3W / 1 VA	2,5W / 5,5 VA	FT-BATLL2	0,97

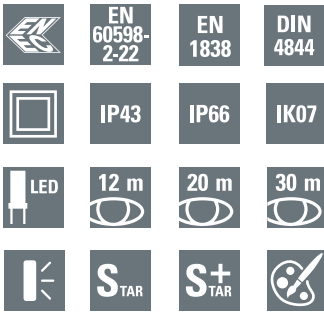
Cable entries for FlexiTech EW 12m



Cable entries for FlexiTech EW 20/30m



- ▲ Cable entries
- Fixing points



FlexiTech EW 30m/20m/12m viewing distance



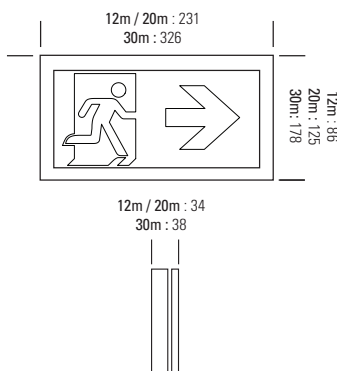
IP66 version

Easy and fast installation without cable glands
Same look as the IP43 version

Entries made of a special thermoplastic elastomer with specific compound developed by automotive industry
Cable entries on sides have an innovative design with 2 membranes:

- The outside membrane protects against water jet pressure
- The inner membrane perfectly surrounds the cable for enhanced sealing

Dimensions (mm)



FlexiTech EW CG-S

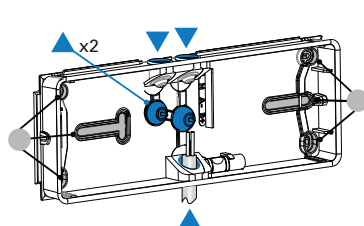
- Single sided exit sign with light guide technology for wall mounting
- Robust construction IK07 for reliable operation also in difficult environments
- Available with 12, 20 & 30 m viewing distance and protection degrees IP43 & IP66
- Non-obtrusive design with a slim housing (34 / 38 mm)
- Including inlay legends for commonly used configurations reduces the logistic effort to have the right pictograms on site
- The inlay legends are well protected against scratches and dirt
- Optimal recognition via high luminance of white contrast colour $> 500 \text{ cd/m}^2$ according to DIN4844-1 / ISO 3864-1 (for bright surroundings), and perfect uniformity $L_{\text{min}}/L_{\text{max}} > 0.8$
- Fast installation and effortless wiring thanks to: cable entries in rubber, large space for cabling, screwless terminal blocks, integrated spirit level and first fixed base plate to snap on the housing without any tool
- Transparent base plate with honeycomb footprint for easy replacement of existing products (IP4x use only)
- Low eco-footprint thanks to its eco-design and low consumption
- Reduced installation expenditures by STAR technology
- Freely programmable mixed operation of the switching modes per luminaire in one circuit
- Shortened inspection effort due to CEWA GUARD technology
- Automatic function monitoring of up to 20 luminaires per circuit
- Minimum service requirement due to high service life of the LEDs
- Complete range of accessories available (recessed kit, recessed box for plaster and brick wall, wire guard)
- Coloured accessories available on demand, custom designed pictograms also available

Viewing distance	12 m, 20 m, 30 m
Luminous flux Φ_e/Φ_N at the end of rated operating time	100 %
Housing material	Polycarbonate
Weight	FT1EW4ICGS, FT1EW4ICGSIP: 0.32 kg FT2EW4ICGS, FT2EW4ICGSIP: 0.43 kg FT3EW4ICGS, FT3EW4ICGSIP: 0.81 kg
Housing colour	White
Type of mounting	Wall surface mounting
Connection terminals	3 x 2 x 2.5 mm ²
Connection voltage	220 – 240 V AC, 50/60 Hz 176 – 275 V DC
Current consumption - battery operation (220 V)	FT1EW4ICGS, FT1EW4ICGSIP: 3.9 mA FT2EW4ICGS, FT2EW4ICGSIP: 5.7 mA FT3EW4ICGS, FT3EW4ICGSIP: 7.8 mA
Power consumption mains operation (apparent power / effective power)	FT1EW4ICGS, FT1EW4ICGSIP: 3.0 VA / 1.0 W FT2EW4ICGS, FT2EW4ICGSIP: 3.5 VA / 1.4 W FT3EW4ICGS, FT3EW4ICGSIP: 4.6 VA / 2.1 W
Inrush current	1.5 A
Permissible ambient temperature	-20 °C to +40 °C
Light source	LED, Lifespan 100 000h

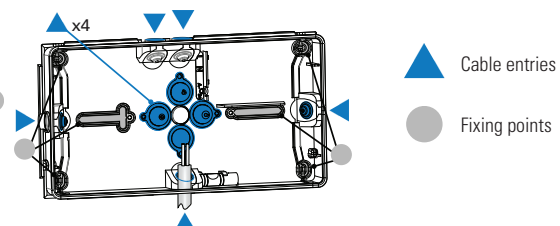
Ordering details

Type	Scope of supply	Order No.
FlexiTech Exit Wall 12m CG-S	including pictogram set	FT1EW4ICGS
FlexiTech Exit Wall 12m CG-S IP	including pictogram set	FT1EW4ICGSIP
FlexiTech Exit Wall 20m CG-S	including pictogram set	FT2EW4ICGS
FlexiTech Exit Wall 20m CG-S IP	including pictogram set	FT2EW4ICGSIP
FlexiTech Exit Wall 30m CG-S	including pictogram set	FT3EW4ICGS
FlexiTech Exit Wall 30m CG-S IP	including pictogram set	FT3EW4ICGSIP

Cable entries for FlexiTech EW 12m



Cable entries for FlexiTech EW 20/30m



Accessories for FlexiTech EW

Accessories



	FT1-RK	Recess Kit for FlexiTech EW 12m	FT1-RK-B	FT1-RK-DG	FT1-RK-S	
	FT2-RK	Recess Kit for FlexiTech EW 20m, metal	FT2-RK-B	FT2-RK-DG	FT2-RK-S	
	FT3-RK	Recess Kit for FlexiTech EW 30m, metal	FT3-RK-B	FT3-RK-DG	FT3-RK-S	
		Metal cover for FlexiTech EW 12m	FT1EWSU-MC-B	FT1EWSU-MC-DG	FT1EWSU-MC-S	FT1EWSU-MC
		Metal cover for FlexiTech EW 20m	FT2EWSU-MC-B	FT2EWSU-MC-DG	FT2EWSU-MC-S	FT2EWSU-MC
		Metal cover for FlexiTech EW 30m	FT3EWSU-MC-B	FT3EWSU-MC-DG	FT3EWSU-MC-S	FT3EWSU-MC
	FT2-WVG	Wire Guard, compatible with FlexiTech EW 12m and 20m				
	40071348370	Wire Guard, compatible with FlexiTech EW 30m				
	FT1-RB	Recess box / plaster & brick for FlexiTech EW 12m				
	EMN	Eaton Magnet for configuration and tests				
	FT-BATLL1	Battery LiFePO4 long life, 3,2V / 600mAh				
	FT-BATLL2	Battery LiFePO4 long life, 3,2V / 1500mAh				
	FT1-4I	Set of 4 pictos for FlexiTech EW, 12m (D, L, R, U), ISO format				
	FT2-4I	Set of 4 pictos for FlexiTech EW, 20m (D, L, R, U), ISO format				
	FT3-4I	Set of 4 pictos for FlexiTech EW, 30m (D, L, R, U), ISO format				

Pictograms



	FT2EWEC-PICTO-UR	FT3EWEC-PICTO-UR	Picto, ISO7010-E002 U/R, Exit Up Right
	FT2EWEC-PICTO-DR	FT3EWEC-PICTO-DR	Picto, ISO7010-E002 D/R, Exit Down Right
	FT2EWEC-PICTO-DL	FT3EWEC-PICTO-DL	Picto, ISO7010-E001 D/L, Exit Down Left
	FT2EWEC-PICTO-UL	FT3EWEC-PICTO-UL	Picto, ISO7010-E001 U/L, Exit Up Left
	FT2EWEC-PICTO-DMD	FT3EWEC-PICTO-DMD	Picto, FDX08-040-3 T28, Man in wheelchair door & arrow down
	FT2EWEC-PICTO-DML	FT3EWEC-PICTO-DML	Picto, FDX08-040-3 T28, Man in wheelchair door & arrow left
	FT2EWEC-PICTO-DMR	FT3EWEC-PICTO-DMR	Picto, FDX08-040-3 T28, Man in wheelchair door arrow right
	FT2EWEC-PICTO-DMU	FT3EWEC-PICTO-DMU	Picto, FDX08-040-3 T28, Man in wheelchair door arrow up
	FT2EWEC-PICTO-DML1	FT3EWEC-PICTO-DML1	Picto, DIN4844, Man in wheelchair & arrow left
	FT2EWEC-PICTO-DMR1	FT3EWEC-PICTO-DMR1	Picto, DIN4844, Man in wheelchair & arrow right
	FT2EWEC-PICTO-DMD1	FT3EWEC-PICTO-DMD1	Picto, DIN4844, Man in wheelchair & arrow down
	FT2EWEC-PICTO-EWL	FT3EWEC-PICTO-EWL	Picto, ISO7010-E016, Escape Window Left
	FT2EWEC-PICTO-EWR	FT3EWEC-PICTO-EWR	ISO7010-E016, Escape Window Right
	FT2EWEC-PICTO-EWD	FT3EWEC-PICTO-EWD	Picto, ISO7010-E016, Escape Window Down
	FT2EWEC-PICTO-RWL	FT3EWEC-PICTO-RWL	Picto, ISO7010-E017, Rescue Window Left
	FT2EWEC-PICTO-RWR	FT3EWEC-PICTO-RWR	Picto, ISO7010-E017, Rescue Window Right
	FT2EWEC-PICTO-RWD	FT3EWEC-PICTO-RWD	Picto, ISO7010-E017, Rescue Window Down
	FT2EWEC-PICTO-MP	FT3EWEC-PICTO-MP	Picto, ISO7010-E007, Meeting Point
	FT2EWEC-PICTO-CR	FT3EWEC-PICTO-CR	Picto, ISO7010-E003, First-Aid
	FT2EWEC-PICTO-H	FT3EWEC-PICTO-H	Picto, Hydrant
	FT2EWEC-PICTO-FEX	FT3EWEC-PICTO-FEX	Picto, ISO7010-F001, Fire Extinguisher
	FT2EWEC-PICTO-FHO	FT3EWEC-PICTO-FHO	Picto, ISO7010-F002, Fire Hose
	FT2EWEC-PICTO-INFO	FT3EWEC-PICTO-INFO	Picto, ISO7001/P-I PF001, INFO
	FT2EWEC-PICTO-WC	FT3EWEC-PICTO-WC	Picto, ISO7001/P-I PF003, WC



FlexiTech EC CGLine+ - Datasheet



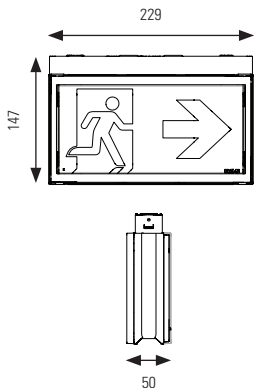
FlexiTech EC CGLine+

- Self-contained luminaire with Automatic Test and individual monitoring (CGLine+) for reduced inspection effort
- Single or double sided Exit sign for ceiling mounting, equipped with two light guides
- Possibility to set the illumination to one face only (case of single side use) to limit power consumption
- Robust construction IK07 for reliable operation even in difficult environments
- Available with 20 and 30m viewing distance and protection degrees IP43 and IP65
- Non-obtrusive design and with a slim housing (50 mm)
- Including inlay legends for commonly used configurations, reducing the logistic effort to have the right pictograms on site
- The inlay legends are well protected against scratches and dirt
- Increased affordance functionality for better visibility of the exit sign and faster evacuation
- Optimal recognition via high luminance of white contrast colour > 500 cd/m² according to DIN4844-1 / ISO 3864-1 (for bright surroundings), and perfect uniformity $L_{min}/L_{max} > 0.8$
- Brightness selectable in two steps in mains operation (eg. theater: 50 cd/m², Supermarket: 500 cd/m²) and additional setting (30%, 70%, 100%)
- Selectable operating time (1/2/3/8h operation)
- Selectable operation mode (Maintained or Non-Maintained) via switch input
- Quick mounting set to snap or unsnap the luminaire for ease of installation and maintenance
- Rubber cable entries and screwless terminal blocks for fast wiring
- Low eco-footprint thanks to its eco-designed, low consumption and Lithium battery
- Simple fault analysis and status display via bicolor LED, testing button (magnet) and supervision solutions
- Lifespan: 10 years without component replacement, proven with 1 year aging test @70°C ambient temperature
- Complete range of accessories (suspension sets, wall bracket)
- Coloured accessories available on demand, custom designed pictograms also available

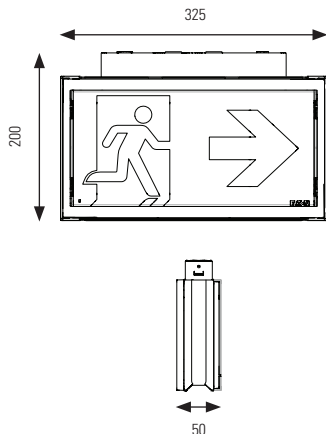
FlexiTech EC 30m/20m viewing distance



Dimensions for 20m viewing distance (mm)



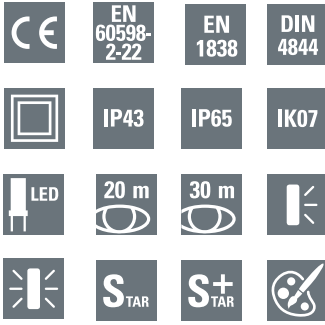
Dimensions for 30m viewing distance (mm)



Pictogram	
Viewing distance	20m or 30m
Included labels	4 Non-adhesive Exit legends (D,U,R,L), ISO format
Luminous flux Φ_e/Φ_N at end of rated operating time	100% @ 1h, 50% @ 2h, 30% @ 3h, 16% @ 8h
Illumination in mains mode	50 or 500 cd setting via switch, and possible additional setting via magnet (30%, 70%, 100%)
Operation	Maintained / Non-Maintained (via switch input)
Duration	Configurable 1/2/3/8 hours
Testing system	Automatic Test in compliance with EN 62034 Connection possible to the CGLine+ monitoring system
Housing	
Type of mounting	Ceiling surface-mounting
Material	Polycarbonate
Colour	White RAL9003
Degree of protection	IP43 or IP65 / IK07
Terminals	Screwless terminals for flexible and rigid wires From 0.5 to 2.5 mm ²
Connection voltage	220 - 240 V AC, 50/60 Hz
Permissible ambient temperature	5°C to 45°C, 0°C to 45°C in maintained mode. 35°C max for 10 years lifetime.
Battery	LiFePO4
Light source	LED, Lifespan 100 000h
Insulation Class	II

Ordering details

Order code	Viewing distance	IP	IK	Illumination in mains mode (cd/m ²)	Operation	Consumption NM (W/VA)	Consumption Maintained operation full brightness		Battery	Weight (kg)
							1 side (W/VA)	2 sides (W/VA)		
FT2EC4ICGL18	20m	43	07	50 or 500	MNM	0.4W / 1.3 VA	1.6 W / 3.5 VA	2.5 W / 5.3 VA	FT-BATLL2	0.62
FT2EC4ICGL18IP	20m	65	07	50 or 500	MNM	0.4W / 1.3 VA	1.6 W / 3.5 VA	2.5 W / 5.3 VA	FT-BATLL2	0.62
FT3EC4ICGL18	30m	43	07	50 or 500	MNM	0.4W / 1.3 VA	2.3 W / 5 VA	3.9 W / 8 VA	FT-BATLL2	1.25
FT3EC4ICGL18IP	30m	65	07	50 or 500	MNM	0.4W / 1.3 VA	2.3 W / 5 VA	3.9 W / 8 VA	FT-BATLL2	1.25



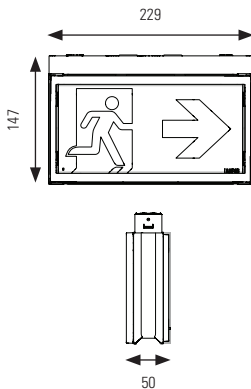
FlexiTech EC 30m/20m viewing distance



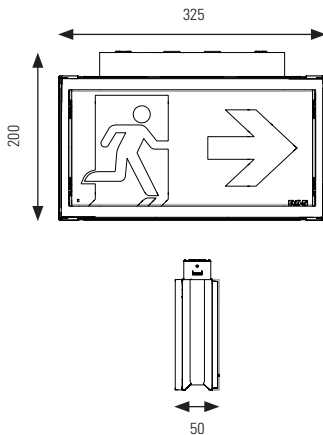
FlexiTech EC CG-S

- Single or double sided Exit sign for ceiling mounting, equipped with two light guides
- Robust construction IK07 for reliable operation also in difficult environments
- Possibility to set the illumination to one face only (case of single side use) to limit power consumption
- Available with 20 and 30 m viewing distance and protection degrees IP43 and IP65
- Non-obtrusive design with a slim housing (50 mm)
- Including inlay legends for commonly used configurations, reducing the logistic effort to have the right pictograms on site
- The inlay legends are well protected against scratches and dirt
- Optimal recognition via high luminance of white contrast colour $> 500 \text{ cd/m}^2$ according to DIN4844-1 / ISO 3864-1 (for bright surroundings), and perfect uniformity $L_{\text{min}}/L_{\text{max}} > 0.8$
- Quick mounting set to snap or unsnap the luminaire for ease of installation and maintenance
- Rubber cable entries and screwless terminal blocks for fast wiring
- Low eco-footprint thanks to its eco-design and low consumption
- Reduced installation expenditures by STAR technology
- Freely programmable mixed operation of the switching modes per luminaire in one circuit
- Shortened inspection effort due to CEWA GUARD technology
- Automatic function monitoring of up to 20 luminaires per circuit
- Minimum service requirement due to high service life of the LEDs
- Complete range of accessories (suspension sets, wall bracket)
- Coloured accessories available on demand, custom designed pictograms also available

Dimensions for 20m viewing distance (mm)



Dimensions for 30m viewing distance (mm)



Viewing distance	20 m, 30 m
Luminous flux Φ_e/Φ_N at the end of rated operating time	100 %
Housing material	Polycarbonate
Weight	FT2EC4ICGS, FT2EC4ICGSIP: 0.56 kg FT3EC4ICGS, FT3EC4ICGSIP: 1.2 kg
Housing colour	White
Type of mounting	Ceiling surface-mounting
Connection terminals	3 x 2 x 2.5 mm ²
Connection voltage	220 – 240 V AC, 50/60 Hz 176 – 275 V DC
Current consumption - battery operation (220 V)	FT2 versions : 1 side: 3.2 mA / 2 sides: 5.5 mA FT3 versions : 1 side: 6.5 mA / 2 sides: 10.7 mA
Power consumption mains operation (apparent power / effective power)	FT2 versions : 3 VA / 1.1 W (1 side) - 3.5 VA / 1.4 W (2 sides) FT3 versions : 3.8 VA / 1.7 W (1 side) - 5.2 VA / 2.7 W (2 sides)
Inrush current	1.5 A
Permissible ambient temperature	-20 °C to +40 °C
Light source	LED, Lifespan 100 000h

Ordering details

Type	Scope of supply	Order No.
FlexiTech Exit Ceiling 20m CG-S	including pictogram set	FT2EC4ICGS
FlexiTech Exit Ceiling 20m CG-S IP	including pictogram set	FT2EC4ICGSIP
FlexiTech Exit Ceiling 30m CG-S	including pictogram set	FT3EC4ICGS
FlexiTech Exit Ceiling 30m CG-S IP	including pictogram set	FT3EC4ICGSIP

Accessories for FlexiTech EC

Accessories



	FTECCC-TSK-50*	Tube Suspension Kit 50cm for FlexiTech EC&CC, IP43	FTECCC-TSK-50-B	FTECCC-TSK-50-DG	FTECCC-TSK-50-S	
	FTECCC-TSK-150*	Tube Suspension Kit 150cm for FlexiTech EC&CC, IP43	FTECCC-TSK-150-B	FTECCC-TSK-150-DG	FTECCC-TSK-150-S	
	FT2ECCC-WB*	Wall Bracket for FlexiTech EC&CC, 20m, IP43	FT2ECCC-WB-B	FT2ECCC-WB-DG	FT2ECCC-WB-S	
	FT3ECCC-WB*	Wall Bracket for FlexiTech EC&CC, 30m, IP43	FT3ECCC-WB-B	FT3ECCC-WB-DG	FT3ECCC-WB-S	
		Metal cover for FlexiTech EC, 20m	FT2EC-MC-B	FT2EC-MC-DG	FT2EC-MC-S	FT2EC-MC
		Metal cover for FlexiTech EC, 30m	FT3EC-MC-B	FT3EC-MC-DG	FT3EC-MC-S	FT3EC-MC
	E-WIRINGSET-IP	Wiring Set IP65, SC & CPS luminaires				
	*To ensure IP65 protection rate, use waterproof connection kit: E-WIRINGSET-IP This set is composed of terminal blocks for one luminaire (SC or CPS), offering in and out wiring possibility.					
	FTECCC-CF	Chain fastening for FlexiTech EC&CC				
	FT1SU-RP	Renovation Plate for FlexiTech EC				
	EMN	Eaton Magnet for configuration and tests				
	FT-BATLL2	Battery LiFePO4 long life, 3,2V / 1500mAh				
	FT2-4I	Set of 4 pictos for FlexiTech EC, 20m (D, L, R, U), ISO format				
	FT3-4I	Set of 4 pictos for FlexiTech EC, 30m (D, L, R, U), ISO format				

Pictograms



	FT2EWEC-PICTO-UR	FT3EWEC-PICTO-UR	Picto, ISO7010-E002 U/R, Exit Up Right
	FT2EWEC-PICTO-DR	FT3EWEC-PICTO-DR	Picto, ISO7010-E002 D/R, Exit Down Right
	FT2EWEC-PICTO-DL	FT3EWEC-PICTO-DL	Picto, ISO7010-E001 D/L, Exit Down Left
	FT2EWEC-PICTO-UL	FT3EWEC-PICTO-UL	Picto, ISO7010-E001 U/L, Exit Up Left
	FT2EWEC-PICTO-DMD	FT3EWEC-PICTO-DMD	Picto, FDX08-040-3 T28, Man in wheelchair door & arrow down
	FT2EWEC-PICTO-DML	FT3EWEC-PICTO-DML	Picto, FDX08-040-3 T28, Man in wheelchair door & arrow left
	FT2EWEC-PICTO-DMR	FT3EWEC-PICTO-DMR	Picto, FDX08-040-3 T28, Man in wheelchair door arrow right
	FT2EWEC-PICTO-DMU	FT3EWEC-PICTO-DMU	Picto, FDX08-040-3 T28, Man in wheelchair door arrow up
	FT2EWEC-PICTO-DML1	FT3EWEC-PICTO-DML1	Picto, DIN4844, Man in wheelchair & arrow left
	FT2EWEC-PICTO-DMR1	FT3EWEC-PICTO-DMR1	Picto, DIN4844, Man in wheelchair & arrow right
	FT2EWEC-PICTO-DMD1	FT3EWEC-PICTO-DMD1	Picto, DIN4844, Man in wheelchair & arrow down
	FT2EWEC-PICTO-EWL	FT3EWEC-PICTO-EWL	Picto, ISO7010-E016, Escape Window Left
	FT2EWEC-PICTO-EWR	FT3EWEC-PICTO-EWR	Picto, ISO7010-E016, Escape Window Right
	FT2EWEC-PICTO-EWD	FT3EWEC-PICTO-EWD	Picto, ISO7010-E016, Escape Window Down
	FT2EWEC-PICTO-RWL	FT3EWEC-PICTO-RWL	Picto, ISO7010-E017, Rescue Window Left
	FT2EWEC-PICTO-RWR	FT3EWEC-PICTO-RWR	Picto, ISO7010-E017, Rescue Window Right
	FT2EWEC-PICTO-RWD	FT3EWEC-PICTO-RWD	Picto, ISO7010-E017, Rescue Window Down
	FT2EWEC-PICTO-MP	FT3EWEC-PICTO-MP	Picto, ISO7010-E007, Meeting Point
	FT2EWEC-PICTO-CR	FT3EWEC-PICTO-CR	Picto, ISO7010-E003, First-Aid
	FT2EWEC-PICTO-H	FT3EWEC-PICTO-H	Picto, Hydrant
	FT2EWEC-PICTO-FEX	FT3EWEC-PICTO-FEX	Picto, ISO7010-F001, Fire Extinguisher
	FT2EWEC-PICTO-FHO	FT3EWEC-PICTO-FHO	Picto, ISO7010-F002, Fire Hose
	FT2EWEC-PICTO-INFO	FT3EWEC-PICTO-INFO	Picto, ISO7001/P-I PF001, INFO
	FT2EWEC-PICTO-WC	FT3EWEC-PICTO-WC	Picto, ISO7001/P-I PF003, WC





FlexiTech SU Safety light with Uniform illumination

Small and Large viewing distance versions

- Centrally powered and self-contained
- Unobtrusive appearance, slim housing (34 to 38mm)
- Robust construction, IK07
- IP43 and IP66
- Universal light distribution (escape route and anti panic)
- Light guide with micro lenses to avoid glare effect
- First fix baseplate

Harmonious integration into the building

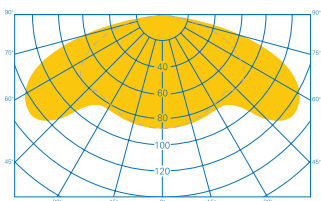
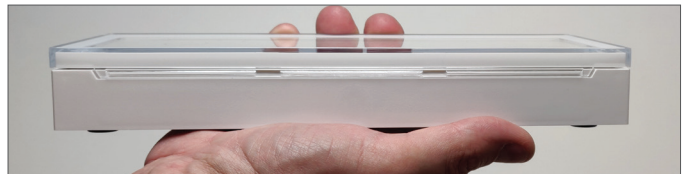
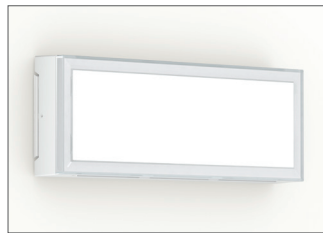


• **One look for all variants** thanks to double membrane technology. IP43 and waterproof versions have same look and dimensions

• **Unobtrusive design and slim housing** make the luminaires **very discreet** in the architecture thanks to light guide technology. Their thickness has been optimized (34 to 38mm)

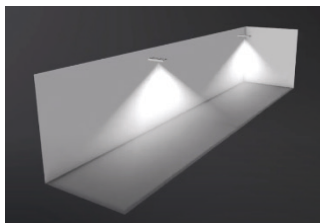
• **Harmonious appearance** building-wide (from the car park to the roof top)

• **Same high quality of illumination** on all safety luminaires, whatever the size, throughout the building.

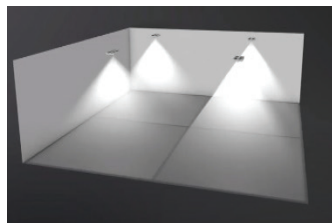


Efficient spacing, escape route or open area illumination

- FlexiTech SU **fits most configurations you will require**
- FlexiTech makes **the lighting study, product selection and project planning easier.**



Escape route



Open area

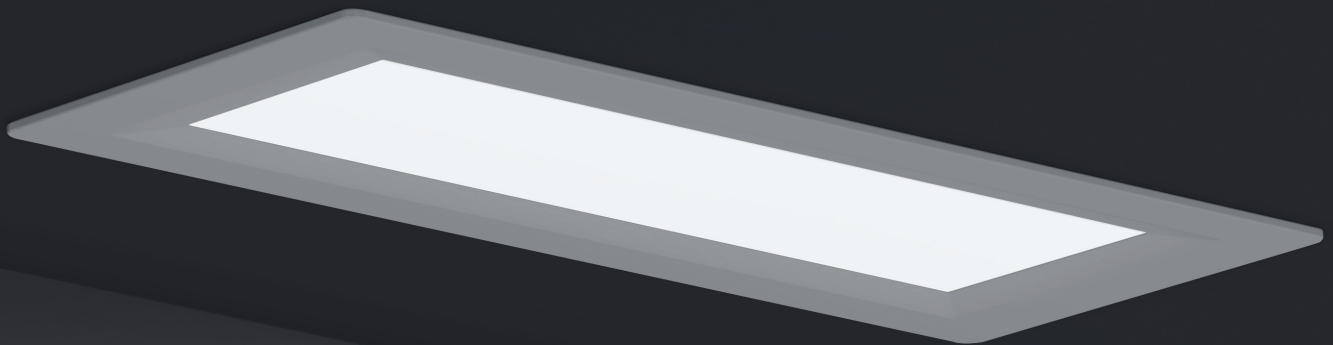
• **Light distribution is optimized for most applications:**

- Efficient spacing
- Suitable for escape route illumination and open areas
- Suitable from low height of installation up to 8 meters

Powerful light output even in a compact housing

- Thanks to **the light guide's micro lenses**, the flux is distributed over **the entire surface to avoid glare effect**
- Same SC luminaires **offer different flux values depending on the duration configured**
- Ceiling mounted or wall mounted **without any glare effect**
- Same self-contained luminaires **can cover different applications**, for example special areas in the building requiring long duration
- **Easy** product selection

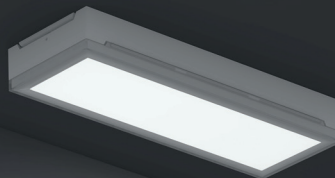
	420 Lumens in emergency mode					Lm in mains	
	CPS	SC luminaires					
		1h	1,5h	2h	3h		8h
FT1SU400CGS	420						
FT3SU400CGS	420						
FT1SU250...13		250	150	125	80	10/100	
FT1SU400...13		420	290	225	140	10/100	
FT1SU400...18		420		225	140	50	
FT3SU400...18		420		225	140	50	



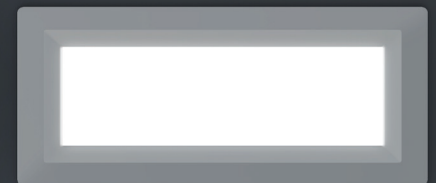
FlexiTech SU Small + Recess Kit



FlexiTech SU Small

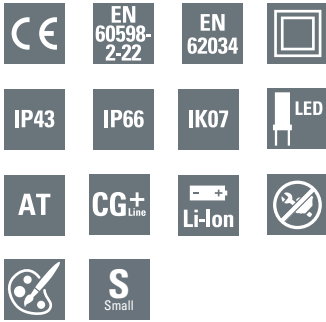


FlexiTech SU Small



FlexiTech SU Small + Recess Kit

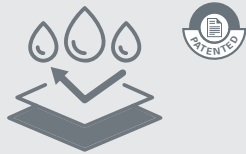
FlexiTech SU CGLine+ - Datasheet



FlexiTech SU CGLine+

- Self-contained luminaire with Automatic Test and individual monitoring (CGLine+) for reduced inspection effort
- Innovative precise micro lenses guide light efficiently along the escape route while thanks to the large light output area the glare is significantly reduced, especially suitable in applications like night light
- Universal light distribution equally suitable for escape route and open area lighting for mounting heights from 2.5 to 8m (420 lm version, 1 hour duration)
- Up to 420 lm in a very compact luminaire
- Robust construction IK07 for reliable operation even in difficult environments
- Available with protection degrees IP43 and IP66
- Light output selectable in two steps in mains operation (eg. theater: 10 lm, supermarket: 100 lm) and additional setting (30%, 70%, 100%)
- Selectable operating time (1/1,5/2/3h operation)
- Selectable operation mode (Maintained or Non-Maintained) via switch input
- Fast installation and effortless wiring thanks to: cable entries in rubber, large space for cabling, screwless terminal blocks, integrated spirit level and first fixed base plate to snap on the housing without any tool
- Transparent base plate with honeycomb footprint for easy replacement of existing products (IP4x use only)
- Low eco footprint thanks to its eco-design, low consumption and Lithium battery
- Lifespan: 10 years without component replacement, proven with 1 year aging test @ 70°C ambient temperature
- Simple fault analysis and status display via bicolor LED, testing button (magnet) and supervision solutions
- Complete range of accessories available (recessed kit, recessed box for plaster and brick wall, wire guard)
- Coloured accessories available on demand

FlexiTech SU - Small

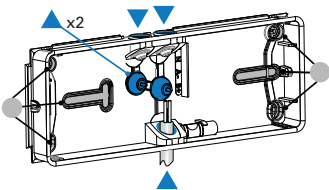


IP66 version

Easy and fast installation without cable glands
Same look as the IP43 version

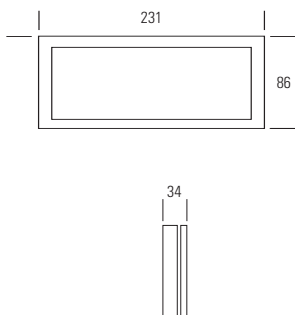
Entries made of a special thermoplastic elastomer with specific compound developed by automotive industry
Cable entries on sides have an innovative design with 2 membranes:

- The outside membrane protects against water jet pressure
- The inner membrane perfectly surrounds the cable for enhanced sealing



▲ Cable entries ● Fixing points

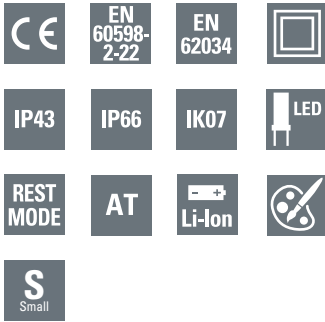
Dimensions (mm)



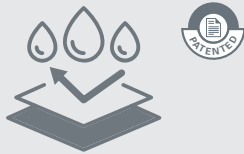
Luminous flux Φ_E/Φ_N at end of rated operating time	FT1SU250 versions : 100% @ 1h, 60% @ 1.5h, 50% @ 2h, 32% @ 3h FT1SU400 versions : 100% @ 1h, 69% @ 1.5h, 54% @ 2h, 33% @ 3h
Illumination in mains mode	10 or 100lm setting via switch, and possible additional setting via magnet (30%, 70%, 100%)
Operation	Maintained / Non-Maintained (via switch input)
Testing system	Automatic Test in compliance with EN 62034 Connection possible to the CGLine+ monitoring system
Housing	
Type of mounting	Surface-mounting
Material	Polycarbonate
Colour	White RAL9003
Degree of protection	IP43 & IP66 / IK07
Terminals	Screwless terminals for flexible and rigid wires From 0,5 to 2,5 mm ²
Connection voltage	220 - 240 V AC, 50/60 Hz
Permissible ambient temperature	5°C to 45°C, 0°C to 45°C in maintained mode. 35°C max for 10 years lifetime.
Battery	LiFePO4
Light source	LED, 6 500 K, CRI ≥70, Lifespan 100 000h
Dimensions	Small: 231 x 86 x 34 mm
Insulation Class	II

Ordering details

Order code	IP	IK	lm in emergency at the selected duration				lm in mains	Operation	Consumption		Battery	Weight (kg)
			1h	1.5h	2h	3h			NM W/VA	M W/VA		
FT1SU250CGL13	43	07	250	150	125	80	10 / 100	MNM	0,3W / 1 VA	2W / 5 VA	FT-BATLL2	0,34
FT1SU250CGL13IP	66	07	250	150	125	80	10 / 100	MNM	0,3W / 1 VA	2W / 5 VA	FT-BATLL2	0,34
FT1SU400CGL13	43	07	420	290	225	140	10 / 100	MNM	0,3W / 1 VA	2W / 5 VA	FT-BATLL3	0,38
FT1SU400CGL13IP	66	07	420	290	225	140	10 / 100	MNM	0,3W / 1 VA	2W / 5 VA	FT-BATLL3	0,38



FlexiTech SU - Small

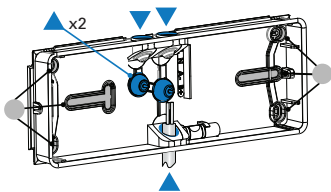


IP66 version

Easy and fast installation without cable glands
Same look as the IP43 version

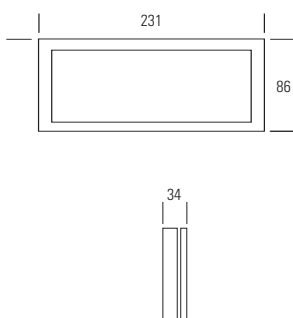
Entries made of a special thermoplastic elastomer with specific compound developed by automotive industry
Cable entries on sides have an innovative design with 2 membranes:

- The outside membrane protects against water jet pressure
- The inner membrane perfectly surrounds the cable for enhanced sealing



▲ Cable entries ● Fixing points

Dimensions (mm)



FlexiTech SU ATT

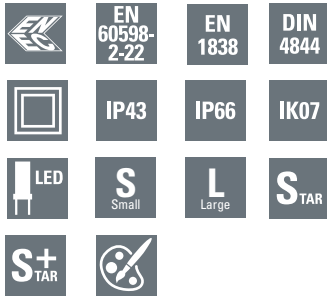
- Self-contained luminaire with Automatic Test for reduced inspection effort
- Innovative precise micro lenses guide light efficiently along the escape route while thanks to the large light output area the glare is significantly reduced, especially suitable in applications like night light
- Universal light distribution equally suitable for escape route and open area lighting for mounting heights from 2.5 to 8m (420 lm version, 1hour duration)
- Up to 420 lm in a very compact luminaire
- Robust construction IK07 for reliable operation even in difficult environments
- Available with protection degrees IP43 and IP66
- Selectable operating time (1/1.5/2/3h operation)
- Selectable operation mode (Maintained or Non-Maintained) via switch
- Fast installation and effortless wiring thanks to: cable entries in rubber, large space for cabling, screwless terminal blocks, integrated spirit level and first fixed base plate to snap on the housing without any tool
- Transparent base plate with honeycomb footprint for easy replacement of existing products (IP4x use only)
- Low eco footprint thanks to its eco-design luminaire, low consumption and Lithium battery
- Simple fault analysis and status display via bicolor LED
- Complete range of accessories available (recessed kit, recessed box for plaster and brick wall, wire guard)
- Coloured accessories available on demand

Luminous flux Φ_e/Φ_N at end of rated operating time	FT1SU250 versions : 100% @ 1h, 60% @ 1.5h, 50% @ 2h, 32% @ 3h FT1SU400 versions : 100% @ 1h, 69% @ 1.5h, 54% @ 2h, 33% @ 3h
Illumination in mains mode	100 lm
Operation	Maintained / Non-Maintained (via switch)
Testing system	Automatic Test in compliance with EN 62034
Rest mode	Rest mode function and test via remote control (TLU)
Housing	
Type of mounting	Surface-mounting
Material	Polycarbonate
Colour	White RAL9003
Degree of protection	IP43 or IP66 / IK07
Terminals	Screwless terminals for flexible and rigid wires From 0,5 to 2,5 mm ²
Connection voltage	220 - 240 V AC, 50/60 Hz
Permissible ambient temperature	5°C to 45°C, 0°C to 45°C in maintained mode
Battery	LiFePO4
Light source	LED, 6 500 K, CRI ≥70, Lifespan 100 000h
Dimensions	231 x 86 x 34 mm
Insulation Class	II

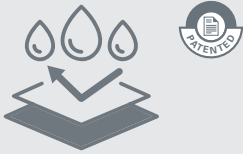
Ordering details

Order code	Im in emergency at the selected duration						Im in mains	Operation	Consumption		Battery	Weight (kg)
	1h	1.5h	2h	3h	NM W/VA	M W/VA						
FT1SU250ATT13	43	07	250	150	125	80	100	MNM	0,3W / 1 VA	2W / 5 VA	FT-BAT2	0.34
FT1SU250ATT13IP	66	07	250	150	125	80	100	MNM	0,3W / 1 VA	2W / 5 VA	FT-BAT2	0.34
FT1SU400ATT13	43	07	420	290	225	140	100	MNM	0,3W / 1 VA	2W / 5 VA	FT-BAT3	0.38
FT1SU400ATT13IP	66	07	420	290	225	140	100	MNM	0,3W / 1 VA	2W / 5 VA	FT-BAT3	0.38

FlexiTech SU CG-S - Datasheet



FlexiTech SU - Small/Large



IP66 version

Easy and fast installation without cable glands
Same look as the IP43 version

Entries made of a special thermoplastic elastomer with specific compound developed by automotive industry

Cable entries on sides have an innovative design with 2 membranes:

- The outside membrane protects against water jet pressure
- The inner membrane perfectly surrounds the cable for enhanced sealing

FlexiTech SU CG-S

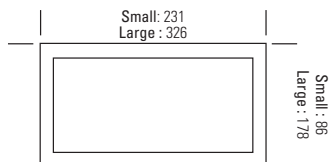
- Safety luminaire with light guide technology for surface or optional recessed mounting
- Innovative precise micro lenses guide light efficiently along the escape route while thanks to the large light output area the glare is significantly reduced, especially suitable in applications like night light
- Universal light distribution equally suitable for escape route and open area lighting for mounting heights up to 7.5 m
- Robust construction IK07 for reliable operation even in difficult environments
- Fast installation and effortless wiring thanks to: cable entries in rubber, large space for cabling, screwless terminal blocks, integrated spirit level and first fixed base plate to snap on the housing without any tool
- Transparent base plate with honeycomb footprint for easy replacement of existing products (IP4x use only)
- Reduced installation expenditures by STAR technology
- Shortened inspection effort due to CEWA GUARD technology
- Automatic function monitoring of up to 20 luminaires per circuit
- Freely programmable mixed operation of the switching modes per luminaire in one circuit
- Minimum service requirement due to high service life of the LEDs
- Complete range of accessories available (recessed kit, recessed box for plaster and brick wall, wire guard)
- Coloured accessories available on demand

Luminous flux Φ_N	420 lm
Luminous flux Φ_e/Φ_N at the end of rated operating time	100%
Housing material	Polycarbonate
Weight	FT1SU400CGS, FT1SU400CGSIP: 0.31 kg FT3SU400CGS: 0.81 kg
Housing colour	White
Type of mounting	Surface mounting
Connection terminals	3 x 2 x 2.5 mm ²
Connection voltage	220 – 240 V AC, 50/60 Hz 176 – 275 V DC
Current consumption - battery operation (220 V)	23 mA
Power consumption mains operation (apparent power / effective power)	9.1 VA / 5.4 W
Inrush current	1.5 A
Permissible ambient temperature	-20°C to +40°C
Light source	LED, 6 500 K, CRI \geq 70, Lifespan 100 000h

Ordering details

Type	Scope of supply	Order No.
FlexiTech SL1 uniform 420 lm CG-S	FlexiTech, Safety light small, Uniform illumination, 420 lm, CG-S	FT1SU400CGS
FlexiTech SL1 uniform 420 lm CG-S IP	FlexiTech, Safety light small, Uniform illumination, 420 lm, CG-S, IP66	FT1SU400CGSIP
FlexiTech SL3 uniform 420 lm CG-S	FlexiTech, Safety light large, Uniform illumination, 420 lm, CG-S	FT3SU400CGS

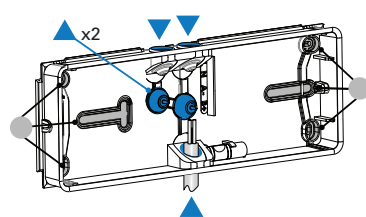
Dimensions (mm)



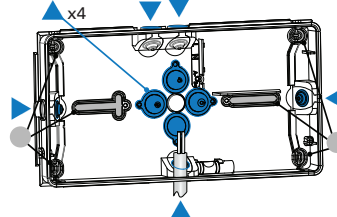
Small: 34
Large: 38



Cable entries for FlexiTech SU Small



Cable entries for FlexiTech SU Large








▲ Cable entries

● Fixing points

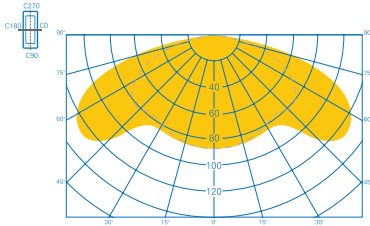
Accessories

 **Black mat**
RAL9005
  **Dark Grey**
RAL7015
  **Silver gloss**
RAL9007
  **White**
RAL9003

	FT1-RK	Recess Kit for FlexiTech FT1SU	FT1-RK-B	FT1-RK-DG	FT1-RK-S	
	FT3-RK	Recess Kit for FlexiTech FT3SU, metal	FT3-RK-B	FT3-RK-DG	FT3-RK-S	
		Metal cover for FlexiTech FT1SU	FT1EWSU-MC-B	FT1EWSU-MC-DG	FT1EWSU-MC-S	FT1EWSU-MC
		Metal cover for FlexiTech FT3SU	FT3EWSU-MC-B	FT3EWSU-MC-DG	FT3EWSU-MC-S	FT3EWSU-MC
	FT2-WG	Wire Guard, compatible with FlexiTech FT1SU				
	40071348370	Wire Guard, compatible with FlexiTech FT3SU				
	FT1-RB	Recess box / plaster & brick for FlexiTech FT1SU				
	FT1SU-RP	Renovation Plate for FlexiTech FT1SU				
	EMN	Eaton Magnet for configuration and tests				
	FT-BAT2	Battery LiFePO4, 3,2V / 1500mAh				
	FT-BAT3	Battery LiFePO4, 3,2V / 3000mAh				
	FT-BATLL2	Battery LiFePO4 long life, 3,2V / 1500mAh				
	FT-BATLL3	Battery LiFePO4 long life, 3,2V / 3000mAh				

FlexiTech SU - Spacing data for flux value: 80 lm

FT1SU250 configured @3 hours



Light distribution curve

FlexiTech SU, asymmetric distribution : 1 lux (0.5 lux)

Ceiling mounting, maintenance factor MF = 94 %, measurement at floor level, battery operation, distances in m

Escape route illumination

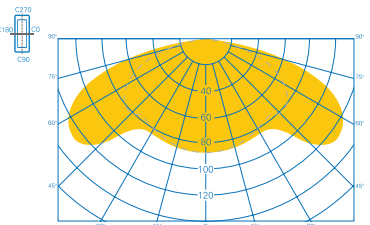
Mounting height [m]	Lux level directly under				
2,5	2,3	2,0 (3,2)	6,4 (8,4)	2,7 (4,0)	7,9 (10,3)
2,8	2	1,8 (3,2)	6,3 (8,7)	2,0 (4,0)	8,1 (10,7)
3,0	1,6	1,7 (3,1)	6,2 (8,8)	1,8 (4,0)	8,1 (10,9)
3,5	1,2	1,1 (2,8)	5,6 (9,0)	1,2 (3,8)	7,2 (11,2)

Open area illumination

Mounting height [m]				
2,5	2,3 (3,1)	6,3 (8,0)	2,3 (3,1)	7,0 (8,7)
2,8	2,0 (3,2)	6,5 (8,2)	2,0 (3,2)	7,6 (9,0)
3,0	1,8 (3,2)	6,6 (8,4)	1,8 (3,2)	7,7 (9,3)
3,5	1,7 (3,1)	6,4 (8,8)	1,7 (3,1)	7,0 (9,9)

FlexiTech SU - Spacing data for flux value: 125 lm

FT1SU250 configured @2 hours



Light distribution curve

FlexiTech SU, asymmetric distribution : 1 lux (0.5 lux)

Ceiling mounting, maintenance factor MF = 94 %, measurement at floor level, battery operation, distances in m

Escape route illumination

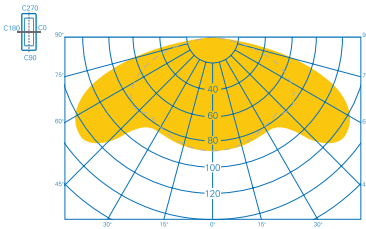
Mounting height [m]	Lux level directly under				
2,5	3,7	2,8 (3,8)	7,7 (9,8)	3,6 (4,7)	9,5 (11,9)
2,8	3	2,7 (3,9)	7,9 (10,2)	3,5 (4,9)	9,7 (12,4)
3	2,5	2,5 (4,0)	7,9 (10,4)	3,5 (4,9)	9,9 (12,8)
3,5	1,8	2,3 (4,0)	7,9 (10,8)	2,4 (5,0)	10,1 (13,3)
4	1,4	1,9 (3,8)	7,6 (11,1)	2,0 (5,0)	9,6 (13,8)
4,5	1	1,2 (3,5)	6,9 (11,3)	1,2 (4,7)	8,8 (14,1)

Open area illumination

Mounting height [m]				
2,5	2,9 (3,6)	7,3 (9,2)	2,9 (3,6)	8,0 (9,9)
2,8	2,9 (3,7)	7,5 (9,6)	2,9 (3,7)	8,4 (10,4)
3,0	2,8 (3,8)	7,7 (9,7)	2,8 (3,8)	8,7 (10,7)
3,5	2,3 (3,9)	8,1 (10,2)	2,3 (3,9)	9,5 (11,2)
4,0	2,1 (3,9)	8,1 (10,7)	2,1 (3,9)	9,5 (11,7)
4,5	1,9 (3,7)	7,8 (11,1)	1,9 (3,7)	9,0 (12,2)

FlexiTech SU - Spacing data for flux value: 150 lm

FT1SU250 configured @1.5 hours



Light distribution curve

FlexiTech SU, asymmetric distribution : 1 lux (0.5 lux)

Ceiling mounting, maintenance factor MF = 94 %, measurement at floor level, battery operation, distances in m

Escape route illumination

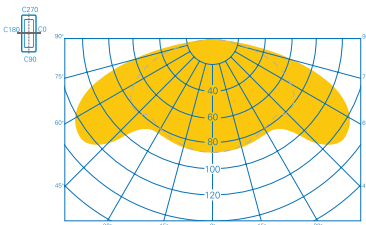
Mounting height [m]	Lux level directly under				
2,5	4,4	3,1 (4,1)	8,2 (10,4)	3,9 (5,1)	10,1 (12,6)
2,8	3,5	3,0 (4,2)	8,5 (10,8)	3,9 (5,2)	10,4 (13,2)
3	3	3,0 (4,3)	8,6 (11,1)	3,9 (5,3)	10,6 (13,5)
3,5	2,2	2,7 (4,4)	8,7 (11,6)	3,6 (5,5)	10,9 (14,3)
4	1,7	2,4 (4,3)	8,6 (12,0)	2,5 (5,5)	11,1 (14,8)
4,5	1,3	1,9 (4,0)	8,1 (12,2)	2,0 (5,5)	10,3 (15,2)
5	1,1	1,1 (3,7)	7,5 (12,3)	1,2 (5,0)	9,5 (15,5)

Open area illumination

Mounting height [m]				
2,5	3,1 (3,9)	7,8 (9,6)	3,1 (3,9)	8,4 (10,2)
2,8	3,1 (4,0)	8,1 (10,1)	3,1 (4,0)	8,9 (10,8)
3,0	3,1 (4,0)	8,2 (10,4)	3,1 (4,0)	9,1 (11,3)
3,5	2,9 (4,2)	8,7 (10,9)	2,9 (4,2)	9,8 (11,8)
4,0	2,4 (4,2)	9,0 (11,4)	2,3 (4,2)	10,6 (12,6)
4,5	2,2 (4,2)	8,8 (11,8)	2,2 (4,2)	10,3 (13,0)
5,0	2,0 (3,9)	8,4 (12,2)	2,0 (3,9)	9,9 (13,9)

FlexiTech SU - Spacing data for flux value: 250 lm

FT1SU250 configured @1 hour



Light distribution curve

FlexiTech SU, asymmetric distribution : 1 lux (0.5 lux)

Ceiling mounting, maintenance factor MF = 94 %, measurement at floor level, battery operation, distances in m

Escape route illumination

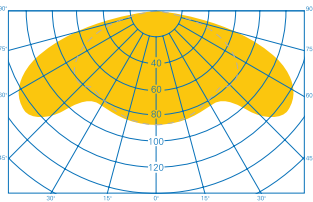
Mounting height [m]	Lux level directly under				
2,5	7,4	3,8 (4,9)	9,8 (12,1)	4,7 (6,0)	11,9 (14,5)
2,8	5,8	3,9 (5,1)	10,2 (12,7)	4,9 (6,2)	12,4 (15,3)
3	5	4,0 (5,2)	10,4 (13,1)	4,9 (6,4)	12,8 (15,8)
3,5	3,7	4,0 (5,4)	10,8 (13,8)	5,0 (6,7)	13,3 (16,8)
4	2,8	3,8 (5,6)	11,1 (14,5)	5,0 (6,9)	13,8 (17,7)
4,5	2,2	3,5 (5,6)	11,3 (15,0)	4,7 (7,0)	14,1 (18,4)
5	1,8	3,2 (5,6)	11,2 (15,4)	3,4 (7,1)	14,3 (18,9)
5,5	1,5	2,8 (5,4)	10,9 (15,7)	2,9 (7,1)	13,9 (19,4)
6	1,2	2,3 (5,1)	10,2 (15,9)	2,4 (6,9)	13,0 (19,7)
6,5	1	1,4 (4,8)	9,6 (15,9)	1,4 (6,3)	12,1 (20,0)

Open area illumination

Mounting height [m]				
2,5	3,7 (4,5)	9,1 (11,0)	3,7 (4,5)	9,7 (11,7)
2,8	3,7 (4,7)	9,6 (11,6)	3,7 (4,7)	10,4 (12,4)
3	3,8 (4,8)	9,8 (11,9)	3,8 (4,8)	10,7 (12,8)
3,5	3,9 (5,0)	10,3 (12,8)	3,9 (5,0)	11,3 (13,7)
4	3,9 (5,1)	10,7 (13,5)	3,9 (5,1)	11,9 (14,8)
4,5	3,7 (5,2)	11,1 (14,1)	3,7 (5,2)	12,5 (15,4)
5	3,1 (5,3)	11,5 (14,5)	3,1 (5,3)	13,4 (16,0)
5,5	2,8 (5,3)	11,5 (14,9)	2,8 (5,3)	13,6 (16,6)
6	2,6 (5,2)	11,2 (15,4)	2,6 (5,2)	13,2 (16,9)
6,5	2,4 (4,8)	10,8 (15,8)	2,4 (4,8)	12,7 (18,1)

FlexiTech SU - Spacing data for flux value: 140 lm

FT1SU400 configured @3 hours



Light distribution curve

FlexiTech SU, asymmetric distribution : 1 lux (0.5 lux)

Ceiling mounting, maintenance factor MF = 94 %, measurement at floor level, battery operation, distances in m

Escape route illumination

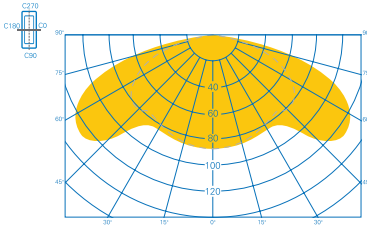
Mounting height [m]	Lux level directly under				
2,5	4,1	3,0 (4,0)	8,0 (10,2)	3,7 (4,9)	9,9 (12,3)
2,8	3	2,9 (4,1)	8,2 (10,6)	3,8 (5,1)	10,2 (12,9)
3	2,8	2,8 (4,2)	8,3 (10,8)	3,7 (5,2)	10,3 (13,2)
3,5	2	2,5 (4,2)	8,4 (11,3)	3,0 (5,3)	10,6 (13,9)
4	1,6	2,2 (4,1)	8,2 (11,7)	2,3 (5,3)	10,7 (14,4)
4,5	1,2	1,7 (3,8)	7,6 (11,9)	1,8 (5,2)	9,8 (14,8)
5	1	0,6 (3,5)	7,0 (11,9)	0,6 (4,1)	8,1 (15,0)

Open area illumination

Mounting height [m]				
2,5	3,0 (3,8)	7,6 (9,4)	3,0 (3,8)	8,3 (10,1)
2,8	3,0 (3,9)	7,9 (9,9)	3,0 (3,9)	8,7 (10,6)
3,0	3,0 (3,9)	8,0 (10,2)	3,0 (3,9)	8,9 (11,1)
3,5	2,7 (4,0)	8,5 (10,7)	2,7 (4,0)	9,6 (11,8)
4,0	2,3 (4,1)	8,7 (11,1)	2,2 (4,1)	10,2 (12,3)
4,5	2,1 (4,0)	8,4 (11,5)	2,1 (4,0)	9,8 (12,9)
5,0	1,9 (3,4)	8,0 (12,0)	1,9 (3,4)	9,3 (13,9)

FlexiTech SU - Spacing data for flux value: 225 lm

FT1SU400 configured @2 hours



Light distribution curve

FlexiTech SU, asymmetric distribution : 1 lux (0.5 lux)

Ceiling mounting, maintenance factor MF = 94 %, measurement at floor level, battery operation, distances in m

Escape route illumination

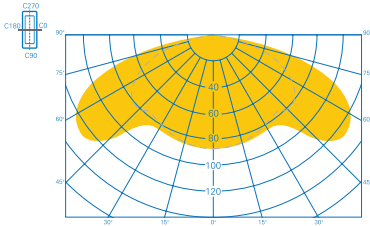
Mounting height [m]	Lux level directly under				
2,5	6	3,7 (4,7)	9,5 (11,8)	4,6 (5,8)	11,5 (14,1)
2,8	4,7	3,8 (4,9)	9,8 (12,3)	4,7 (6,0)	12,1 (14,8)
3	4,5	3,8 (5,0)	10,0 (12,7)	4,7 (6,2)	12,3 (15,3)
3,5	3,3	3,7 (5,2)	10,4 (13,4)	4,8 (6,4)	12,8 (16,3)
4	2,5	3,4 (5,3)	10,6 (13,9)	4,7 (6,6)	13,2 (17,1)
4,5	2	3,1 (5,4)	10,7 (14,4)	3,6 (6,7)	13,5 (17,7)
5	1,6	2,8 (5,2)	10,5 (14,8)	3,0 (6,8)	13,5 (18,2)
5,5		2,4 (5,0)	9,9 (15,0)	2,5 (6,7)	12,7 (18,6)
6		1,7 (4,7)	9,3 (15,1)	1,7 (6,3)	11,8 (18,9)

Open area illumination

Mounting height [m]				
2,5	3,5 (4,4)	8,9 (10,7)	3,5 (4,4)	9,6 (11,4)
2,8	3,6 (4,5)	9,2 (11,3)	3,6 (4,5)	10,1 (12,1)
3	3,7 (4,6)	9,4 (11,6)	3,7 (4,6)	10,3 (12,5)
3,5	3,7 (4,8)	9,9 (12,4)	3,7 (4,8)	11,0 (13,4)
4	3,6 (4,9)	10,3 (13,1)	3,6 (4,9)	11,6 (14,3)
4,5	3,1 (5,0)	10,8 (13,6)	3,1 (5,0)	12,5 (14,9)
5	2,8 (5,0)	10,9 (14,0)	2,8 (5,0)	12,9 (15,6)
5,5	2,6 (5,0)	10,7 (14,4)	2,6 (5,0)	12,7 (16,1)
6	2,4 (4,8)	10,4 (14,8)	2,4 (4,8)	12,3 (16,7)

FlexiTech SU - Spacing data for flux value: 290 lm

FT1SU400 configured @1.5 hours



Light distribution curve

FlexiTech SU, asymmetric distribution : 1 lux (0.5 lux)

Ceiling mounting, maintenance factor MF = 94 %, measurement at floor level, battery operation, distances in m

Escape route illumination

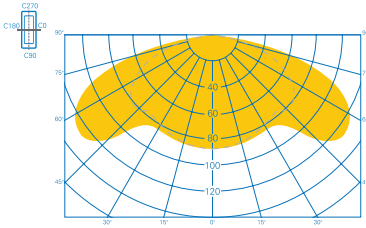
Mounting height [m]	Lux level directly under				
2,5	8,5	4,1 (5,2)	10,3 (12,6)	5,0 (6,2)	12,4 (15,1)
2,8	6	4,2 (5,4)	10,7 (13,3)	5,2 (6,5)	13,0 (15,9)
3	5,5	4,2 (5,5)	11,0 (13,7)	5,2 (6,7)	13,4 (16,5)
3,5	4	4,3 (5,7)	11,5 (14,5)	5,4 (7,0)	14,1 (17,5)
4	3	4,2 (5,9)	11,8 (15,2)	5,4 (7,3)	14,6 (18,5)
4,5	2,6	3,9 (6,0)	12,1 (15,8)	5,4 (7,5)	15,0 (19,4)
5	2	3,6 (6,1)	12,1 (16,2)	4,6 (7,6)	15,2 (20,0)
5,5	1,7	3,3 (6,0)	12,0 (16,6)	3,6 (7,7)	15,4 (20,5)
6	1,4	2,9 (5,8)	11,6 (16,9)	3,1 (7,6)	14,8 (20,9)
6,5	1,2	2,4 (5,4)	10,9 (17,1)	2,5 (7,4)	14,0 (21,3)
7	1	1,5 (5,2)	10,4 (17,2)	1,5 (6,8)	13,0 (21,5)

Open area illumination

Mounting height [m]				
2,5	3,4 (4,3)	9,7 (11,7)	3,5 (4,3)	10,8 (12,8)
2,8	3,9 (4,9)	10,0 (12,1)	3,9 (4,9)	10,8 (12,8)
3	3,3 (4,5)	10,2 (12,7)	3,9 (4,6)	12,1 (14,1)
3,5	3,7 (4,9)	11,3 (14,0)	3,1 (4,2)	12,4 (14,8)
4	3,6 (4,7)	11,9 (14,5)	2,8 (4,8)	13,1 (16,2)
4,5	3,2 (4,5)	12,0 (14,8)	3,3 (5,3)	14,1 (17,5)
5	3,0 (4,6)	12,3 (15,6)	3,0 (4,9)	14,6 (18,1)
5,5	3,1 (4,6)	12,8 (16,3)	1,3 (4,6)	14,7 (18,7)
6	2,4 (4,3)	12,6 (16,6)	1,3 (4,7)	15,2 (19,6)
6,5	1,9 (4,2)	12,4 (17,0)	0,9 (4,5)	15,0 (20,1)
7	1,8 (4,6)	12,1 (17,8)	0,6 (2,4)	14,6 (20,0)
7,5	1,7 (3,8)	11,9 (17,5)	0,6 (3,7)	14,1 (21,1)
8	0,7 (3,8)	11,6 (18,0)	0,5 (1,3)	13,9 (21,2)
8,5	0,5 (3,3)	11,1 (17,9)	1,3 (0,8)	13,1 (21,3)
9	0,5 (2,7)	12,4 (17,7)	0,5 (0,6)	11,0 (21,1)

FlexiTech SU - Spacing data for flux value: 420 lm

FT1SU400 configured @1 hour



Light distribution curve

FlexiTech SU, asymmetric distribution : 1 lux (0.5 lux)

Ceiling mounting, maintenance factor MF = 94 %, measurement at floor level, battery operation, distances in m

Escape route illumination

Mounting height [m]	Lux level directly under				
2,5	12	4,6 (5,8)	11,5 (14,0)	5,7 (6,9)	13,9 (16,6)
2,8	9	4,8 (6,0)	12,1 (14,7)	5,9 (7,3)	14,5 (17,6)
3	8	4,9 (6,2)	12,4 (15,2)	6,0 (7,5)	15,0 (18,1)
3,5	6,3	5,1 (6,5)	13,1 (16,2)	6,3 (8,0)	15,9 (19,5)
4	4,8	5,2 (6,8)	13,6 (17,2)	6,4 (8,4)	16,7 (20,7)
4,5	3,8	5,1 (7,0)	14,0 (17,9)	6,5 (8,6)	17,3 (21,7)
5	3	5,0 (7,2)	14,4 (18,5)	6,5 (8,9)	17,7 (22,6)
5,5	2,5	4,7 (7,3)	14,5 (19,1)	6,4 (9,0)	18,1 (23,4)
6	2,1	4,4 (7,3)	14,6 (19,5)	5,6 (9,2)	18,3 (24,0)
6,5	1,8	4,1 (7,2)	14,5 (19,9)	4,4 (9,3)	18,5 (24,6)
7	1,5	3,7 (7,1)	14,2 (20,3)	3,9 (9,2)	18,3 (25,0)
7,5	1,3	3,3 (6,8)	13,6 (20,5)	3,4 (9,1)	17,3 (25,4)
8	1,2	2,6 (6,5)	12,9 (20,6)	2,7 (8,8)	16,5 (25,7)
8,5	1	1,5 (6,2)	12,4 (20,6)	1,6 (7,8)	15,3 (25,9)

Open area illumination

Mounting height [m]				
2,5	3,8 (4,6)	10,6 (12,7)	4,1 (4,9)	12,0 (14,2)
2,8	4,4 (5,4)	11,1 (13,3)	4,4 (5,4)	11,9 (14,1)
3	4,5 (5,5)	11,4 (13,8)	4,5 (5,5)	12,3 (14,7)
3,5	4,7 (5,9)	12,2 (14,7)	4,7 (5,9)	13,2 (15,7)
4	4,8 (6,1)	12,8 (15,7)	4,8 (6,1)	14,0 (16,8)
4,5	4,9 (6,3)	13,3 (16,5)	4,9 (6,3)	14,5 (17,8)
5	4,9 (6,4)	13,7 (17,3)	4,9 (6,4)	15,2 (18,8)
5,5	4,8 (6,6)	14,1 (17,8)	4,8 (6,6)	15,8 (19,5)
6	4,4 (6,7)	14,5 (18,3)	4,4 (6,7)	16,7 (20,1)
6,5	3,8 (6,7)	14,9 (18,8)	3,8 (6,7)	17,5 (20,8)
7	3,6 (6,7)	14,9 (19,3)	3,6 (6,7)	17,7 (21,4)
7,5	3,4 (6,6)	14,6 (19,7)	3,4 (6,6)	17,4 (22,1)
8	3,2 (6,4)	14,3 (20,1)	3,2 (6,4)	16,9 (22,7)
8,5	3,0 (5,9)	13,9 (20,6)	3,0 (5,9)	16,3 (23,6)
9	1,9 (4,8)	14,3 (21,3)	0,5 (3,3)	17,1 (25,1)

Notes

A series of horizontal dotted lines for taking notes.

Eaton is an intelligent power management company dedicated to protecting the environment and improving the quality of life for people everywhere. We make products for the data center, utility, industrial, commercial, machine building, residential, aerospace and mobility markets. We are guided by our commitment to do business right, to operate sustainably and to help our customers manage power today and well into the future. By capitalizing on the global growth trends of electrification and digitalization, we're accelerating the planet's transition to renewable energy sources, helping to solve the world's most urgent power management challenges, and building a more sustainable society for people today and generations to come.

Eaton was founded in 1911 and has been listed on the New York Stock Exchange for more than a century. We reported revenues of \$23.2 billion in 2023 and serve customers in more than 160 countries.

For more information, visit **Eaton.com**.

Changes to the products, to the information contained in this document, and to prices are reserved; so are errors and omissions. Only order confirmations and technical documentation by Eaton is binding. Photos and pictures also do not warrant a specific layout or functionality. Their use in whatever form is subject to prior approval by Eaton. The same applies to Trademarks (especially Eaton, Moeller, Cutler-Hammer and CEAG). The Terms and Conditions of Eaton apply, as referenced on Eaton Internet pages and Eaton order confirmations.

Eaton
EMEA Headquarters
Route de la Longeraie 7
1110 Morges, Switzerland
Eaton.eu

© 2025 Eaton
All Rights Reserved
Publication No. BR451045EN
January 2025

Eaton is a registered trademark.

All other trademarks are property of their respective owners.



Powering Business Worldwide