

# Focus On Safety



**EATON**

*Powering Business Worldwide*

# Focus On Safety

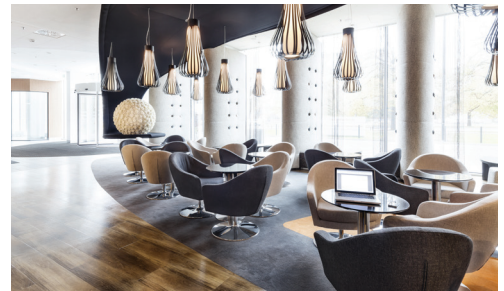
## Safety and exit sign luminaires ...

### One look

Installers and project managers face product selection and installation challenges every day. Eaton's new RoundTech range makes choosing the right product easy. Its unique **eFocus** capability allows for light distribution to be adjusted for **escape routes or open areas** illumination, resulting in less order codes and simpler product selection.

Its round design helps achieve **aesthetic consistency** with other building devices and also makes install simple, particularly for recessed finishing, as no specific tools or modifications are required.

The RoundTech range covers **most monitoring types and technologies**. It benefits from the latest breakthroughs, such as high performance **lithium batteries** and increased affordance functionality for better recognition of ceiling mounted exit signs which are also part of the range.



...suitable for recessed mounting



RoundTech MR SEO



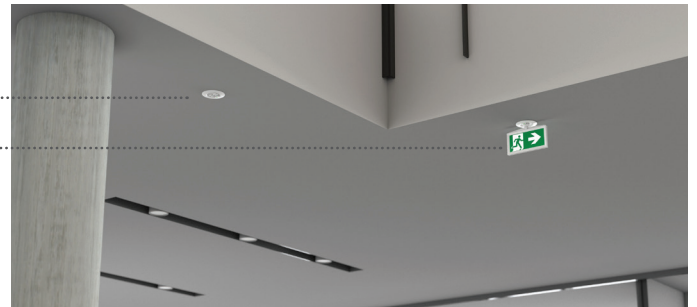
RoundTech MR EC

### Harmonious integration

**RoundTech MR SEO**  
**S**afety light for  
**E**scape route and  
**O**pen area illumination



**RoundTech MR EC**  
**E**xit Sign  
**C**eiling mounting



### Where to use RoundTech MR



RoundTech MR EC for  
**Exit signage**

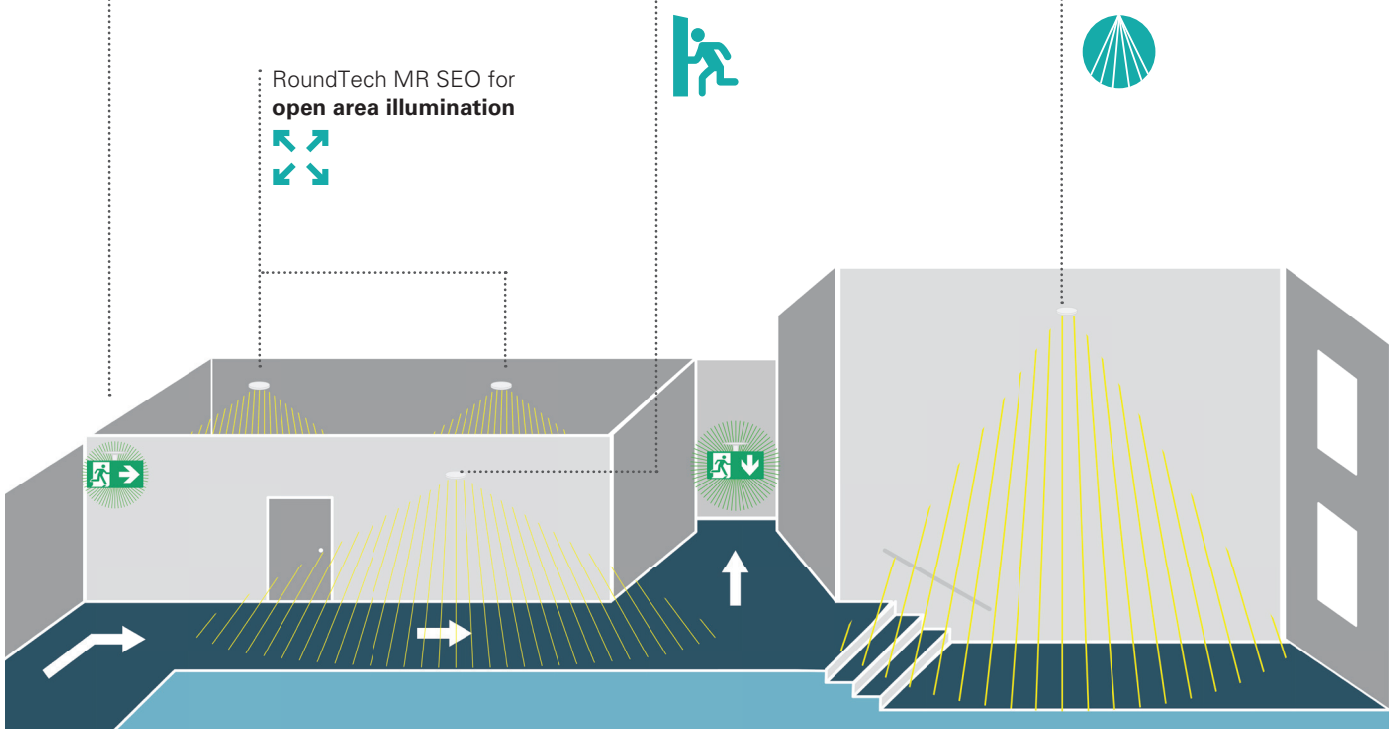
RoundTech MR SEO for  
**open area illumination**



RoundTech MR SEO for  
**escape route illumination**



RoundTech MR SEO for  
**high bay illumination**





RoundTech luminaires make installing emergency lighting quick and easy with standard circular tools for any hole size from 64mm up to 78mm. Critically, its innovative, single solution eFocus capability makes RoundTech instantly configurable for both escape routes and anti-panic areas, simplifying ordering and last-minute changes, as well as reducing errors.

Leading the way with eco-friendly lithium batteries and low-temperature light engine, RoundTech is available in 150lm, 200lm and 400lm variants and Low Bay options for installation up to 7.5m height delivering up to 24m spacing at 3m height plus a High Bay version for up to 12m height.

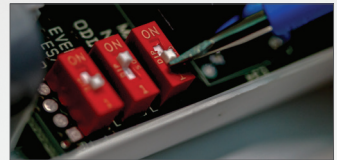
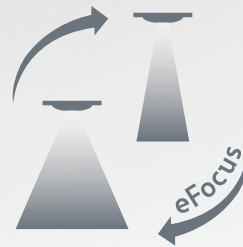
The LEDs within the RoundTech alongside the automatic testing and monitoring devices (using CGLine+ versions) significantly reduce the operating and maintenance costs of the installation.



## One reference for escape route and open area illumination

Thanks to eFocus technology, the same product can be installed for Escape Route (1lx) and Open Area (0.5lx) illumination simplifying ordering and last-minute on-site changes, as well as reducing errors.

eFocus programming allows you to select what illumination you need for the application. Both wide area anti-panic lighting and narrow focused illumination is possible from the same fitting. Simply select symmetric (antipanic) or asymmetric lighting (escape route) via the dip switch before installing.



Easy switch from one type of light distribution to another



**eFocus, Escape Route light distribution**, enables installations for corridors, escape routes and maximizes the distance between lighting fixtures. A maximum spacing of up to 43m between luminaires reduces the number of required light points and an application range from 2.5m up to 12m for 1Lux, enables mounting at the normally occurring heights.



**eFocus, Open Area light distribution**, enables installations for large areas where no fixed escape route is defined, meaning that the complete area must be illuminated. A maximum spacing of up to 24.9m between luminaires reduces the number of required light points and an application range from 2.5m up to 16m for 0.5Lux, enables mounting at the normally occurring heights.



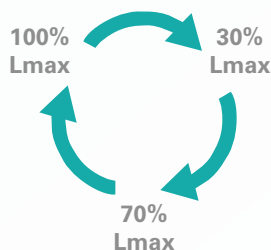
## Lighting performance for low bay or high ceiling

- Luminous flux of 150lm, 200lm and 400lm
- Installation up to 12m with optimum spacing of 43m for 1lux illumination
  - LowBay: Installation up to 7.5m height
  - HiBay: Installation up to 12m height
- Brightness selectable in mains operation (60lm) via magnet with additional setting (30%, 70%, 100%)

## Same look and feel for IP44 and IP65 variants

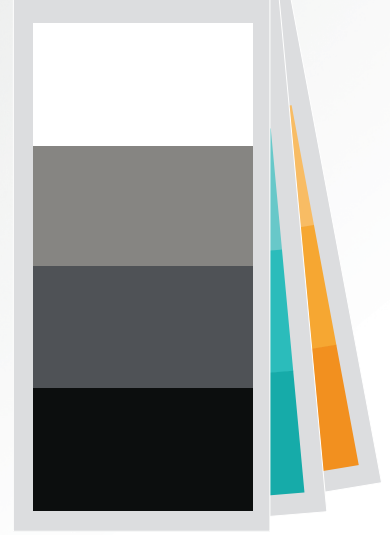


Easy configuration of light level thanks to Eaton magnet

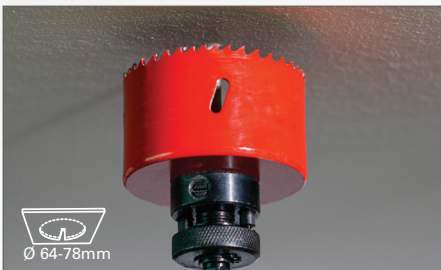


## Customization for even better integration

Opportunities to further harmonize design look and feel include an optional square trim plus a full spectrum of customized colorways.



## Ease of installation



Quick and easy installing with standard circular tools...



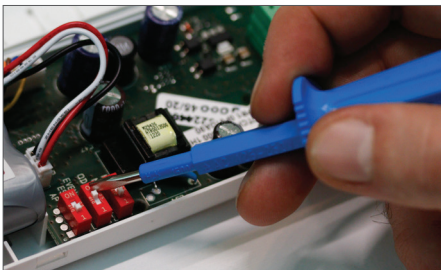
... via standard hole saw (Ø 64-78mm) and lean PSU.

## Renovation plate for fast maintenance operations

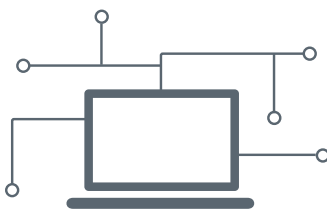
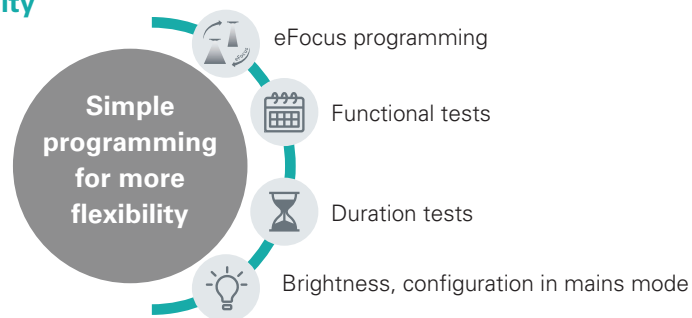


Renovation plate will provide the solution to your need for replacement of existing products in a building, whatever the shape of existing holes.

## Simple programming for more flexibility



Switches for simple programming



## Keeping your system operational Limiting operational and maintenance costs

The use of LEDs, automatic testing and monitoring devices (using CGLine+ versions) significantly reduce the operating and maintenance costs of the installation.

- Automatic tests and individual monitoring
- Blocking mode and rest mode to keep battery fully loaded during site works or during vacancy of a building
- Compatible with VisionGuard visualization software
- Can be added to current BMS connection solutions



VisionGuard visualization software

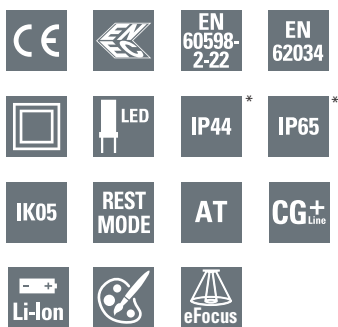
## Protecting lives and the environment

- Reduced impact on the environment throughout its life cycle (design, manufacture, use, recycling)
- Conform to REACH and ROHS
- Batteries without Cadmium
- Latest generation of high-performance LEDs / Low consumption
- Brightness in mains mode can be also adjusted (30, 70, 100%) on the CGLine+ variants
- Use in Maintained & Non-Maintained mode
- Monitored solutions (CGLine+) allow to switch off the system in business idle times, enabling energy savings



# RoundTech MR SEO

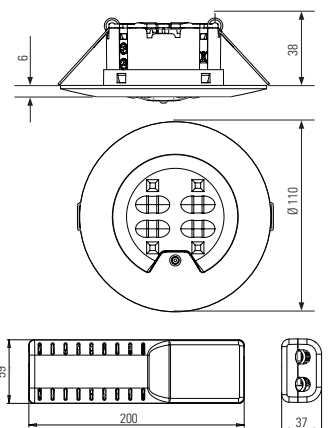
Medium Recessed Safety luminaire for Escape route or Open area



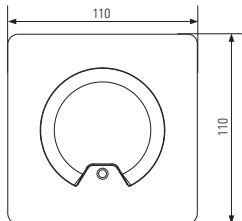
RoundTech MR SEO



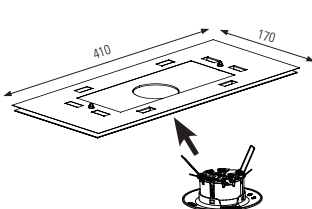
Dimensions in mm



Square trim



Renovation trim



## RoundTech Medium Recessed

- LED self-contained safety luminaire
- Installation up to 12m with optimum spacing of 43m for 1lux illumination
  - LowBay: Installation up to 7.5m height
  - HiBay: Installation up to 12m height
- eFocus programming: narrow and wide light distribution, programmed by the user
  - One product applicable for Escape Route or Open Area illumination
  - User / installer to define light distribution to fit the application
- Suitable for use in cinemas, theatres, shopping malls, industrial units, healthcare or hotels
- Automatic test for reduced inspection effort in autonomous installation or connection to CGLine+
- Simple fault analysis and status display via bicolor LED
- Selectable operation mode (Maintained or Non-Maintained) via switch or external contact
- Brightness selectable in mains operation (60lm) via magnet with additional setting (30%, 70%, 100%)
- Easy recessed installation via standard hole saw (Ø 64-78mm)
- Low eco footprint thanks to its eco-design, low consumption and lithium battery
- Round or Square trim available for aesthetic customization options and colours

Luminous flux	150lm, 200lm, 400lm
Operation	Non-Maintained, Maintained / Non-Maintained
Duration	1h or 3h
Testing system	Test by magnet, Automatic Test, test by remote control (TLU) Telecommand
Connection terminals	up to 1x2.5 mm <sup>2</sup> with screw up to 1x2.5 mm <sup>2</sup> with screw, removable up to 2x2.5 mm <sup>2</sup> screwless pushwire In & Out mains terminals (L, N, E) CGLine+ bus through-wiring up to 2,5 mm <sup>2</sup>
Rated voltage	220-240 V AC, 50/60 Hz
Housing material	Polycarbonate (850 °C glow wire resistant)
Housing colour	White RAL9003 (custom color variants available)
Insulation Class	Class II
Color Rendering Index	R70
Color Temperature	5700K
Light source	4 LEDs Escape Route / 4 LEDs Open Area
Permissible ambient temperature	+5°C to +45°C

## Ordering details

Order code	Description	Icon 1	Icon 2	Icon 3	Icon 4	Icon 5
<b>Stand Alone</b>						
RT2RSO150SA1H	RoundTech Med. Recessed SA NM IP44	Open area	0.6VA/0.3W	1h	150 lm	LiFePO4 3.2V / 1.5Ah
RT2RSO150SA3H	RoundTech Med. Recessed SA NM IP44	Open area	0.6VA/0.3W	3h	150 lm	LiFePO4 3.2V / 3Ah
RT2RSEO200STF1HIP	RoundTech Med. Recessed SA MNM IP65	✓	1.8VA/1.1W	1h	200 lm	LiFePO4 3.2V / 1.5Ah
RT2RSEO200STF3HIP	RoundTech Med. Recessed SA MNM IP65	✓	1.8VA/1.1W	3h	200 lm	LiFePO4 3.2V / 3Ah
<b>Auto-test</b>						
RT2RSEO200ATF1H	RoundTech Med. Recessed ATF MNM IP44	✓	1.8VA/1.1W	1h	200 lm	LiFePO4 3.2V / 1.5Ah
RT2RSEO200ATF3H	RoundTech Med. Recessed ATF MNM IP44	✓	1.8VA/1.1W	3h	200 lm	LiFePO4 3.2V / 3Ah
RT2RSEO200ATF1HIP	RoundTech Med. Recessed ATF MNM IP65	✓	1.8VA/1.1W	1h	200 lm	LiFePO4 3.2V / 1.5Ah
RT2RSEO200ATF3HIP	RoundTech Med. Recessed ATF MNM IP65	✓	1.8VA/1.1W	3h	200 lm	LiFePO4 3.2V / 3Ah
<b>CGLine+</b>						
RT2RSEO200CGL1HIP	RoundTech Med. Recessed CGL+ MNM IP65	✓	1.8VA/1.1W	1h	200 lm	LiFePO4 3.2V / 1.5Ah
RT2RSEO200CGL3HIP	RoundTech Med. Recessed CGL+ MNM IP65	✓	1.8VA/1.1W	3h	200 lm	LiFePO4 3.2V / 3Ah
RT2RSEO400CGL1HIP	RoundTech Med. Recessed CGL+ MNM IP65	✓	1.8VA/1.1W	1h	400 lm	LiFePO4 3.2V / 1.5Ah
<b>CGLine+ High bay variant for application up to 12m of height</b>						
RT2RHEO200CGL3HIP	RoundTech Med. Recessed CGL+ MNM IP65	✓	1.8VA/1.1W	3h	200 lm	LiFePO4 3.2V / 3Ah

## Accessories

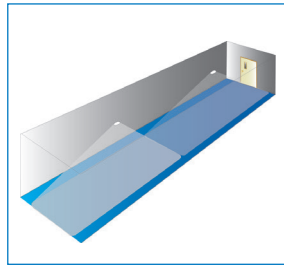
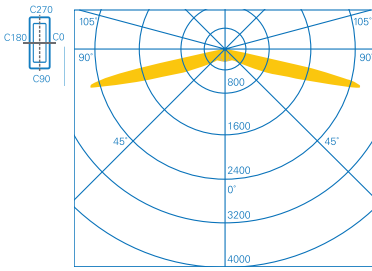
		Black mat RAL9005	Dark Grey RAL7015	Silver gloss RAL9007	
⊙	RT2R-RT	Round trim for RoundTech Medium Recessed	RT2R-RTB	RT2R-RTG	RT2R-RTS
⊙	RT2R-ST	Square trim for RoundTech Medium Recessed	RT2R-STB	RT2R-STG	RT2R-STS
⊙	RT2R-RP	Renovation Plate for RoundTech medium Recessed			
⊙	RT2R-BAT1	Battery Pack, LifePO4 3.2V 1.5Ah			
⊙	RT2R-BAT3	Battery Pack, LifePO4 3.2V 3Ah			
⊙	EMN	Eaton Magnet for configuration and tests			

\* Degree of protection of the luminaire: IP44 or IP65 (Once installed in the ceiling, the luminaire face is rated IP44 or IP65)  
Degree of protection of the module housing: IP20

# RoundTech MR SEO - Light performance

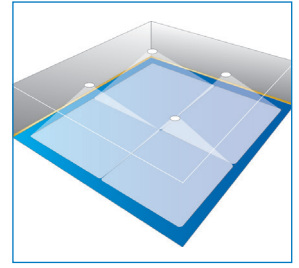
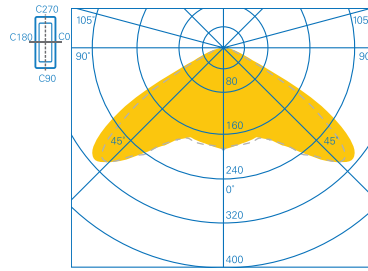
Medium Recessed Safety luminaire for Escape route or Open area

## RoundTech MR Escape Route light distribution



Escape route for 1 lux

## RoundTech MR Open Area light distribution



Open area for 0.5 lux

LowBay - Planning help for RoundTech 1.0 lx / 0.5lx

Maintenance factor MF = 94 %, battery operation and distances in m

	Height (m)	Lux level directly under	Installation configurations			
			←→	←→	←→	←→
Ceiling mounting Escape route center 400lm LowBay	3,0	10,9	2,5 (3,1)	6,3 (7,7)	11,2 (12,2)	24,4 (26,2)
	3,5	8,0	2,7 (3,3)	6,6 (6,6)	12,5 (13,7)	27,4 (29,7)
	4,0	6,1	2,9 (3,5)	6,9 (6,9)	13,7 (15,2)	30,4 (33,0)
	5,0	3,9	3,2 (3,8)	7,6 (7,6)	15,6 (17,8)	35,7 (39,1)
	6,0	2,7	3,4 (4,2)	8,4 (8,4)	16,1 (20,1)	40,2 (44,9)
	7,0	2,0	3,5 (4,5)	9,1 (9,1)	12,6 (21,9)	43,0 (50,1)
	7,5	1,7	3,4 (4,6)	9,3 (9,3)	11,3 (22,6)	42,3 (52,6)
Ceiling mounting Escape route center 200lm LowBay	2,5	7,8	1,9 (2,3)	4,7 (5,9)	8,9 (9,7)	19,5 (21,1)
	3,0	5,4	2,1 (2,5)	5,0 (6,3)	10,0 (11,2)	22,4 (24,4)
	3,5	4,0	2,3 (2,7)	5,4 (6,6)	10,9 (12,5)	25,0 (27,4)
	4,0	3,0	2,4 (2,9)	5,8 (6,9)	11,5 (13,7)	27,4 (30,4)
	5,0	1,9	2,4 (3,2)	6,4 (7,6)	8,8 (15,6)	30,4 (35,7)
	6,0	1,3	2,1 (3,4)	6,8 (8,4)	2,9 (16,1)	26,6 (40,2)
	Ceiling mounting Room illumination 400lm LowBay	2,5	4,6 (5,3)	10,0 (11,1)	4,6 (5,3)	10,5 (11,6)
3,0		5,0 (5,9)	11,3 (12,6)	5,0 (5,9)	11,9 (13,2)	
3,5		5,3 (6,4)	12,5 (14,0)	5,3 (6,4)	13,1 (14,8)	
4,0		5,5 (6,7)	13,5 (15,4)	5,5 (6,7)	14,2 (16,2)	
4,5		5,6 (7,1)	14,3 (16,6)	5,6 (7,1)	15,1 (17,5)	
5,0		5,6 (7,4)	14,9 (17,7)	5,6 (7,4)	15,9 (18,7)	
5,5		5,2 (7,6)	15,3 (18,8)	5,2 (7,6)	16,5 (19,8)	
Ceiling mounting Room illumination 200lm LowBay	2,5	3,9 (4,6)	8,9 (10,0)	3,9 (4,6)	9,3 (10,5)	
	3,0	4,1 (5,0)	9,8 (11,3)	4,1 (5,0)	10,3 (11,9)	
	3,5	4,1 (5,3)	10,5 (12,5)	4,1 (5,3)	11,2 (13,1)	
	4,0	3,5 (5,5)	11,3 (13,5)	3,5 (5,5)	11,7 (14,2)	

\* Spacing tables above are examples of performance of certain models with specific lumen output, installed on specific heights. Complete performance characteristics for all models and all installation heights and can be derived by the use of the LDT files available on request.

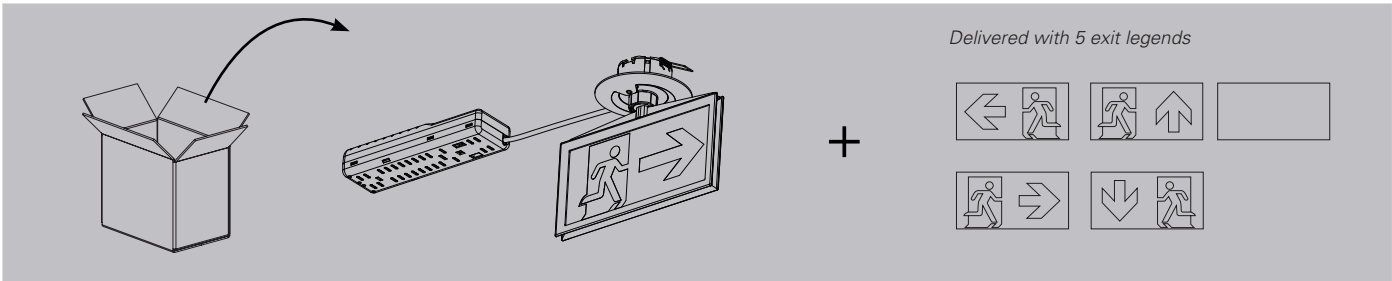




In its exit sign version, RoundTech offers a perfect homogeneity and uniformity of the pictograms illuminance thanks to a 20m viewing distance panel.

IP43/IK04 rated and offering Increased Affordance (when connected to a CGLine+ web controller), the sign comes with four directional inserts as standard plus a blank. Supplied with eco-friendly lithium batteries, RoundTech lays down a marker for emergency lighting sustainability.

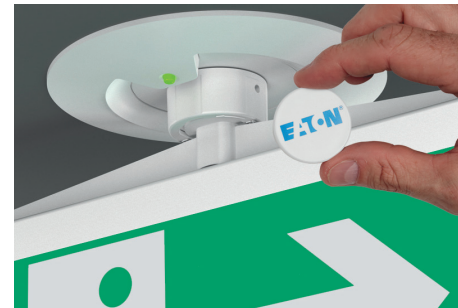
The LEDs within the RoundTech alongside the automatic testing and monitoring devices (using CGLine+ versions) significantly reduces the operating and maintenance costs of the installation.



## Innovative features for better understanding of the exit sign

- 20m viewing distance exit sign
- Delivered with a set of exit legends to meet most of existing configurations
- Perfect homogeneity and uniformity of the pictogram's illuminance
- Light guide technology brings a high uniformity and homogenized illumination
- High luminance of white contrast colour >500 cd/m<sup>2</sup> in mains mode
- Brightness selectable in mains operation to additional settings (30%-150 cd/m<sup>2</sup>, 70%-350 cd/m<sup>2</sup>, 100%-500 cd/m<sup>2</sup>)

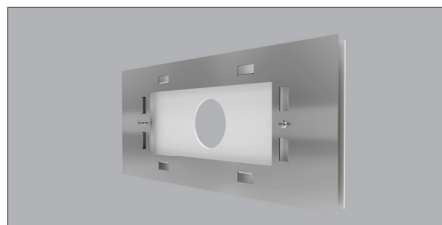
Legends are perfectly illuminated, making the perceptibility of the Exit Signs very easy whatever the lighting conditions.



Brightness selection using Eaton magnet

## Renovation plate for fast maintenance operations

Renovation plate will provide the solution to your need for replacement of existing products in a building, whatever the shape of existing holes.



## Pictograms for specific requirements in the building

The role of exit sign luminaires may not always be showing the escape route. A range of pictograms is available to address specific signage requirements such as routes to safety equipment, refuge locations and assembly points. (See more on page 11)



## Unmissable exit signs...



### ... thanks to Increased affordance

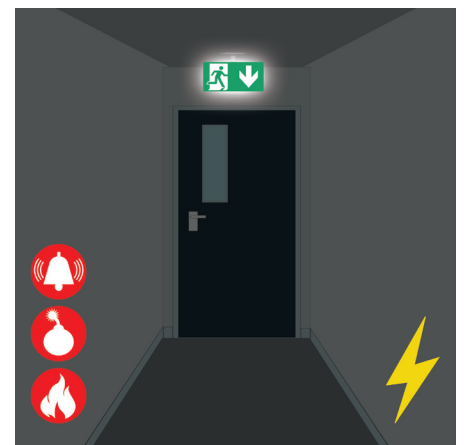
Increased Affordance function (IA) available on CGLine+ versions, makes exit signs more recognizable when evacuation is needed, even in a very brightly lit environment.



In mains operation, **uniform illumination** of the pictograms facilitates the identification of emergency exits.



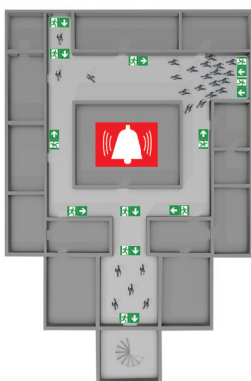
An evacuation order (fire, danger or climatic risk) triggers the **Increased Affordance** function which enables better recognition of the escape route through blinking or pulsing.



In case of power failure, the pictograms are perfectly legible **without risk of glare** for users.

### ... for safer evacuation

#### Without IA

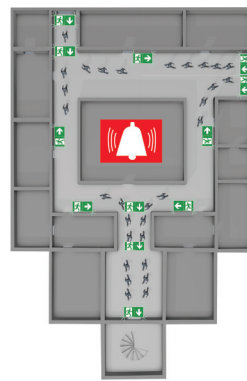


Risk of congestion at entry points of the building.



Difficult for those with impaired hearing who may not hear any accompanying vocal instructions.

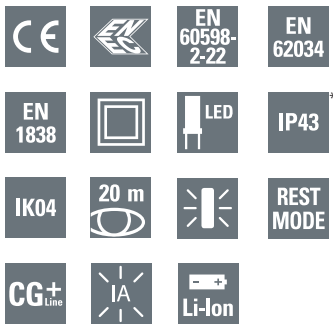
#### With IA



The animation of the safety pictograms (blinking) facilitates the identification of ALL available escape routes and exits.

# RoundTech MR EC

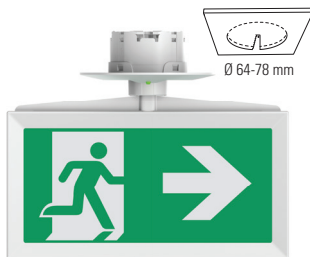
Medium Recessed Exit sign Ceiling mounted



## RoundTech Medium Recessed Exit sign Ceiling mounted

- LED self-contained luminaire with Automatic Test and individual monitoring (CGLine+) for reduced inspection effort
- 20m viewing distance Exit sign, single and double sided
- Ceiling recessed mounting
- Delivered with non-adhesive exit legends for most of existing configurations (single & double sided signage)
- Increased affordance functionality for better visibility of the exit sign and faster evacuation
- Perfect homogeneity and uniformity of the pictogram's illuminance
- Optimal recognition via high luminance of white contrast colour > 500 cd/m<sup>2</sup> according to EN1838
- Brightness selectable in mains operation to additional settings (30%-150 cd/m<sup>2</sup>, 70%-350 cd/m<sup>2</sup>, 100%-500 cd/m<sup>2</sup>)
- Maintained operation
- Easy recessed installation via standard hole saw (Ø 64-78mm)
- Low eco footprint thanks to its eco-design, low consumption and Lithium battery
- Simple fault analysis and status display via bicolor LED, testing button (magnet)
- Custom designed pictograms available on demand

RoundTech MR EC

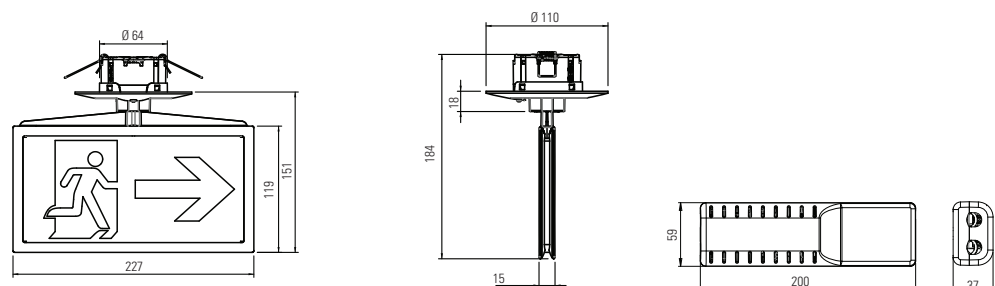


Viewing distance	20m
Pictograms	5 Non-adhesive Exit legends (D,U,R,L, Blank) ISO format
Illumination in mains mode	up to 500 cd/m <sup>2</sup> and possible additional settings via magnet (30%, 70%, 100%)
Operation	Maintained
Testing system	Automatic Test in compliance with EN 62034 Connection possible to the CGLine+ monitoring system
Type of mounting	Ceiling recessed-mounting
Connection terminals	up to 2x2.5 mm <sup>2</sup> screwless pushwire In & Out mains terminals (L, N, E) CGLine+ bus through-wiring up to 2,5 mm <sup>2</sup>
Connection voltage	220-240 V AC, 50/60 Hz
Housing material	Polycarbonate
Housing colour	White RAL9003
Insulation Class	Class II
Light source	LED strip (5700K, CRI>70)
Permissible ambient temperature	+5°C to +45°C

## Ordering details

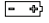

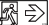

Order code	Description			
RT2R2EC4ICGL3H	RoundTech Med. Recessed Exit Ceiling 20M CGL+ M IP43	3.2VA/2W	3h	LiFePO4 3.2V / 3Ah

Dimensions in mm

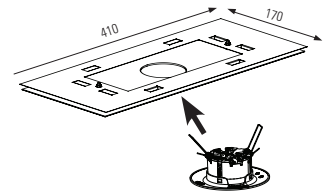


\* Degree of protection of the luminaire: IP43 (Once installed in the ceiling, the luminaire face is rated IP43)  
Degree of protection of the module housing: IP20




## Accessories

	RT2R-BAT3	Battery Pack, LifePO4 3.2V 3Ah
	EMN	Eaton Magnet for configuration and tests
	FT2ED-4I	Set of 4 pictos for RoundTech MR EC (D, L, R, U), ISO format
	RT2R-RP	Renovation Plate for RoundTech medium Recessed

## Renovation trim



## Additional Specific Pictograms

	FT2ED-PICTO-UR	Picto, ISO7010-E002 U/R, Exit Up Right
	FT2ED-PICTO-DR	Picto, ISO7010-E002 D/R, Exit Down Right
	FT2ED-PICTO-DL	Picto, ISO7010-E001 D/L, Exit Down Left
	FT2ED-PICTO-UL	Picto, ISO7010-E001 U/L, Exit Up Left
	FT2ED-PICTO-DMD	Picto, FDX08-040-3 T28, Man in wheelchair door & arrow down
	FT2ED-PICTO-DML	Picto, FDX08-040-3 T28, Man in wheelchair door & arrow left
	FT2ED-PICTO-DMR	Picto, FDX08-040-3 T28, Man in wheelchair door arrow right
	FT2ED-PICTO-DMU	Picto, FDX08-040-3 T28, Man in wheel chair door and arrow up
	FT2ED-PICTO-DML1	Picto, DIN4844, Man in wheelchair & arrow left
	FT2ED-PICTO-DMR1	Picto, DIN4844, Man in wheelchair & arrow right
	FT2ED-PICTO-DMD1	Picto, DIN4844, Man in wheelchair & arrow down
	FT2ED-PICTO-EWL	Picto, ISO7010-E016, Escape Window Left
	FT2ED-PICTO-EWR	Picto, ISO7010-E016, Escape Window Right
	FT2ED-PICTO-EWD	Picto, ISO7010-E016, Escape Window Down
	FT2ED-PICTO-RWL	Picto, ISO7010-E017, Rescue Window Left
	FT2ED-PICTO-RWR	Picto, ISO7010-E017, Rescue Window Right
	FT2ED-PICTO-RWD	Picto, ISO7010-E017, Rescue Window Down
	FT2ED-PICTO-MP	Picto, ISO7010-E007, Meeting Point
	FT2ED-PICTO-CR	Picto, ISO7010-E003, First-Aid
	FT2ED-PICTO-H	Picto, Hydrant
	FT2ED-PICTO-FEX	Picto, ISO7010-F001, Fire Extinguisher
	FT2ED-PICTO-FHO	Picto, ISO7010-F002, Fire Hose
	FT2ED-PICTO-INFO	Picto, ISO7001/P-I PF001, INFO
	FT2ED-PICTO-WC	Picto, ISO7001/P-I PF003, WC

Eaton is an intelligent power management company dedicated to improving the quality of life and protecting the environment for people everywhere. We are guided by our commitment to do business right, to operate sustainably and to help our customers manage power today and well into the future. By capitalizing on the global growth trends of electrification and digitalization, we're accelerating the planet's transition to renewable energy, helping to solve the world's most urgent power management challenges, and doing what's best for our stakeholders and all of society.

Founded in 1911, Eaton is marking its 100th anniversary of being listed on the New York Stock Exchange. We reported revenues of \$20.8 billion in 2022 and serve customers in more than 170 countries. For more information, visit **Eaton.com**.

Changes to the products, to the information contained in this document, and to prices are reserved; so are errors and omissions. Only order confirmations and technical documentation by Eaton is binding. Photos and pictures also do not warrant a specific layout or functionality. Their use in whatever form is subject to prior approval by Eaton. The same applies to Trademarks (especially Eaton, Moeller, and Cutler-Hammer). The Terms and Conditions of Eaton apply, as referenced on Eaton Internet pages and Eaton order confirmations.

**Eaton**  
EMEA Headquarters  
Route de la Longeraie 7  
1110 Morges, Switzerland  
Eaton.eu

© 2023 Eaton  
All Rights Reserved  
Publication No. BR451043EN  
April 2023

Eaton is a registered trademark.

All other trademarks are property of their respective owners.