

1 RJ11-connection UTP, flat model, incl. flush-mounting frame 71 x 71 mm with screw fixing

170-75213

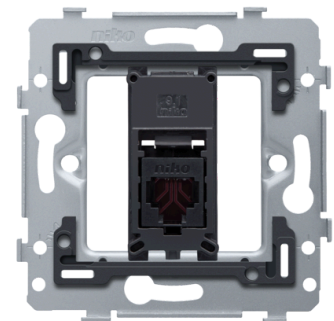
CE

4 year warranty

This mechanism with 1 RJ11 connection point is used to connect 1 telephone. It is connected in a star configuration to the central connection cabinet. The flush-mounting frame has interior dimensions 45x45mm and exterior dimensions 71 x 71 mm and is fitted with screw fixing. A finishing set and faceplate in the colour of your choice must be ordered separately.

This article is protected by at least one patent (or patent application). For more info on patents, see www.niko.eu/innovation.

- metal base is held firmly in place, even on uneven walls, doesn't break and is not subject to stress cracking (small ruptures)



Technical data

This mechanism with 1 RJ11 connection point is used to connect 1 telephone. It is connected in a star configuration to the central connection cabinet. The flush-mounting frame has interior dimensions 45x45mm and exterior dimensions 71 x 71 mm and is fitted with screw fixing. A finishing set and faceplate in the colour of your choice must be ordered separately.

This article is protected by at least one patent (or patent application). For more info on patents, see www.niko.eu/innovation.

- Protection degree: IP41 for the combination of a mechanism, central plate and faceplate
- the combination of a mechanism, a central plate and a faceplate has an impact-resistance of IK06