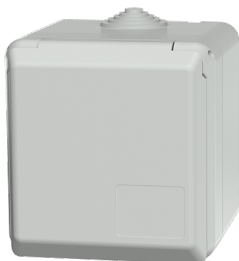


## Cepex grounding-type panel wall receptacle

Part no. 4900



- french-belgian standard
- screw terminals
- one cable entry at top with M 25 stub, one M 25 blind entry (can be cut out) at bottom, one M 20 entry (can be cut out) at the back side, for cables from 7 bis 13 mm Ø
- meeting DIN 18032 standards for ball rebound

### Technical specifications

Ampere	16 A
Poles	2 p+PE
Voltage	230 V
Hertz	60-50 Hz
Protection type	IP44
Shutter	true
Weight	260 g

### Drawing

Drawing 1 MB 312	Amp. Poles	16			32		
		3	4	5	3	4	5
Dim. in mm	a	93	93	93	93	93	93
	b	90	90	90	90	90	90
	c	87	87	87	99	99	99
	d	75	75	75	75	75	75
	e	73	73	73	73	73	73
	f	5.5	5.5	5.5	5.5	5.5	5.5
	g	4.2	4.2	4.2	4.2	4.2	4.2
	k	33	33	33	33	33	33
	y	25.5	25.5	25.5	25.5	25.5	25.5
	M	25x1.5	25x1.5	25x1.5	25x1.5	25x1.5	25x1.5
	Terminal for cond. cross section (mm <sup>2</sup> ) min.-max.	1.5	1.5	1.5	2.5	2.5	2.5
		-4	-4	-4	-6	-6	-6