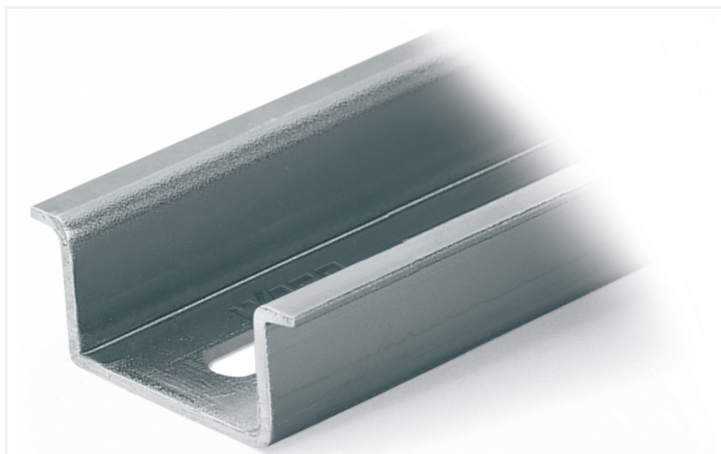


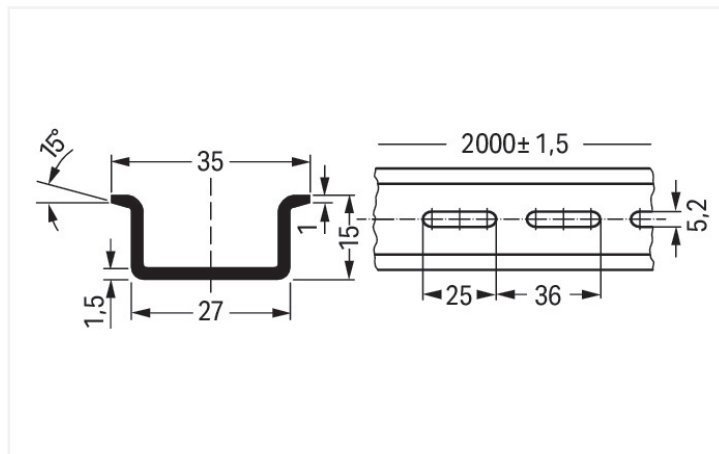
## Data Sheet | Item Number: 210-508

Steel carrier rail; 35 x 15 mm; 1.5 mm thick; 2 m long; slotted; galvanized; similar to EN 60715; silver-colored

<https://www.wago.com/210-508>



Color: ■ silver-colored



Dimensions in mm

### Physical data

Width	2000 mm / 78.74 inches
Height	15 mm / 0.591 inches
Depth	35 mm / 1.378 inches

### Material data

Color	silver-colored
Fire load	0 MJ
Weight	1245 g

### Commercial data

Product Group	2 (Terminal Block Accessories)
PU (SPU)	1 pcs
Packaging type	Box
Country of origin	IT
GTIN	4017332791304
Customs tariff number	72169180000

### Product Classification

UNSPSC	30101804
eCl@ss 10.0	27-40-06-02
eCl@ss 9.0	27-40-06-02
ETIM 9.0	EC001285
ETIM 8.0	EC001285
ECCN	NO US CLASSIFICATION

Environmental Product Compliance	
RoHS Compliance Status	Compliant, No Exemption

## Downloads

### Environmental Product Compliance

Compliance Search	
Environmental Product Compliance 210-508	<a href="#">↓</a>

## Documentation

Bid Text			
210-508	19.02.2019	xml 2.71 KB	<a href="#">↓</a>
210-508	04.01.2018	doc 24.00 KB	<a href="#">↓</a>

## CAD/CAE-Data

CAD data	
2D/3D Models 210-508	<a href="#">↓</a>







CAE data	
EPLAN Data Portal 210-508	<a href="#">↓</a>
WSCAD Universe 210-508	<a href="#">↓</a>

## 1 Compatible Products

### 1.1 Optional Accessories

#### 1.1.1 Installation

##### 1.1.1.1 Mounting accessories

 <b>Item No.: 210-148</b> Angled support bracket; without screw; silver-colored	 <b>Item No.: 209-137</b> Mounting adapter; can be used as end stop; 6.5 mm wide; gray	 <b>Item No.: 210-149</b> Screw M 5 x 8; for angled support bracket	 <b>Item No.: 249-117</b> Screwless end stop; 10 mm wide; for DIN-rail 35 x 15 and 35 x 7.5; gray
 <b>Item No.: 249-197</b> Screwless end stop; 14 mm wide; for DIN-rail 35 x 15 and 35 x 7.5; gray	 <b>Item No.: 249-116</b> Screwless end stop; 6 mm wide; for DIN-rail 35 x 15 and 35 x 7.5; gray		

## 1.1.2 Marking

### 1.1.2.1 Label



**Item No.: 210-808**

Labels; for Smart Printer; 9.5 x 25 mm;  
white



**Item No.: 210-708**

Labels; for TP printers; 9.5 x 25 mm; white