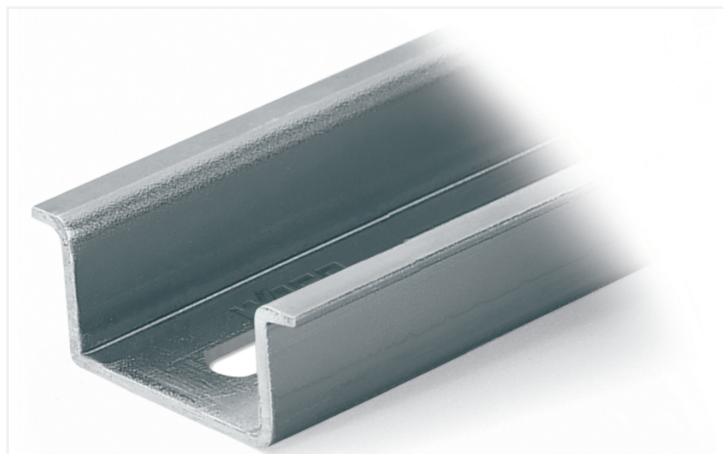


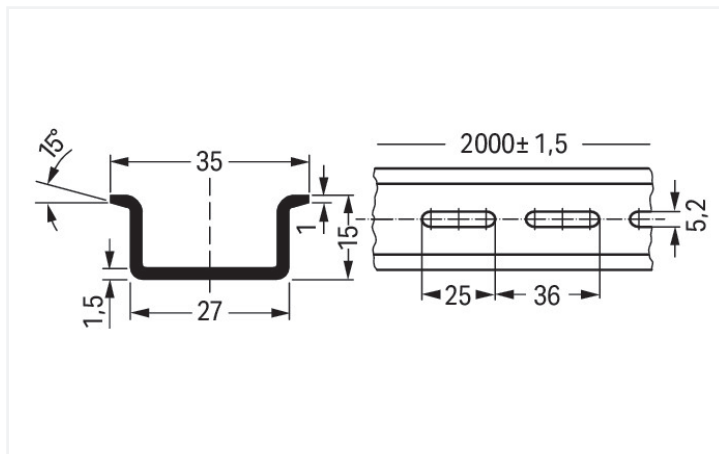
Data Sheet | Item Number: 210-197

Steel carrier rail; 35 x 15 mm; 1.5 mm thick; 2 m long; slotted; similar to EN 60715; silver-colored

<https://www.wago.com/210-197>



Color: ■ silver-colored



Dimensions in mm

Physical data

Width	2000 mm / 78.74 inches
Height	15 mm / 0.591 inches
Depth	35 mm / 1.378 inches

Material data

Color	silver-colored
Fire load	0 MJ
Weight	1235 g

Commercial data

Product Group	2 (Terminal Block Accessories)
PU (SPU)	10 (1) pcs
Packaging type	Box
Country of origin	IT
GTIN	4017332102759
Customs tariff number	72169180000

Product Classification

UNSPSC	30101804
eCl@ss 10.0	27-40-06-02
eCl@ss 9.0	27-40-06-02
ETIM 9.0	EC001285
ETIM 10.0	EC001285
ECCN	NO US CLASSIFICATION

Environmental Product Compliance

RoHS Compliance Status	Compliant, No Exemption
------------------------	-------------------------

Downloads

Environmental Product Compliance

Compliance Search	
Environmental Product Compliance 210-197	↓

Documentation

Bid Text			
210-197	19.02.2019	xml 2.71 KB	↓
210-197	31.08.2017	doc 23.50 KB	↓

CAD/CAE-Data

CAD data	
2D/3D Models 210-197	↓

CAE data	
EPLAN Data Portal 210-197	↓
WSCAD Universe 210-197	↓
ZUKEN Portal 210-197	↓

1 Compatible Products

1.1 Optional Accessories

1.1.1 Installation

1.1.1.1 Mounting accessories



Item No.: 210-148
 Angled support bracket; without screw; silver-colored



Item No.: 209-137
 Mounting adapter; can be used as end stop; 6.5 mm wide; gray



Item No.: 210-149
 Screw M 5 x 8; for angled support bracket



Item No.: 249-117
 Screwless end stop; 10 mm wide; for DIN-rail 35 x 15 and 35 x 7.5; gray



Item No.: 249-197
 Screwless end stop; 14 mm wide; for DIN-rail 35 x 15 and 35 x 7.5; gray



Item No.: 249-116
 Screwless end stop; 6 mm wide; for DIN-rail 35 x 15 and 35 x 7.5; gray

1.1.2 Marking

1.1.2.1 Label



Item No.: 210-808

Labels; for Smart Printer; 9.5 x 25 mm;
white

Item No.: 210-708

Labels; for TP printers; 9.5 x 25 mm; white