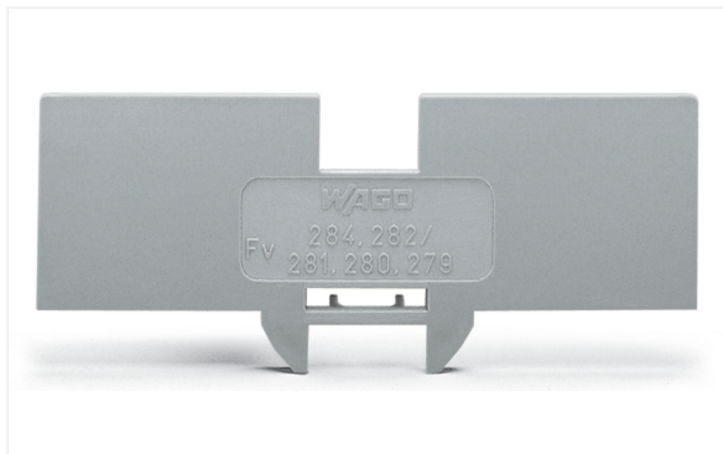


Data Sheet | Item Number: 284-344

Step-down cover plate; 1 mm thick; for 2-, 3- and 4-conductor terminal blocks;
orange

<https://www.wago.com/284-344>



Color: ■ orange

Similar to illustration

Physical data

| | |
|--------|------------------------|
| Width | 1 mm / 0.039 inches |
| Height | 68 mm / 2.677 inches |
| Depth | 26.5 mm / 1.043 inches |

Material data

| | |
|------------------------------------|--|
| Note (material data) | Information on material specifications can be found here |
| Color | orange |
| Material group | I |
| Insulation material (main housing) | Polyamide (PA66) |
| Flammability class per UL94 | V0 |
| Fire load | 0.049 MJ |
| Weight | 1.6 g |

Commercial data

| | |
|-----------------------|----------------------------------|
| Product Group | 1 (Rail Mounted Terminal Blocks) |
| PU (SPU) | 100 (25) pcs |
| Packaging type | Box |
| Country of origin | CN |
| GTIN | 4017332195935 |
| Customs tariff number | 85389099990 |

| Product Classification | |
|------------------------|----------------------|
| UNSPSC | 39121409 |
| eCl@ss 10.0 | 27-14-11-33 |
| eCl@ss 9.0 | 27-14-11-33 |
| ETIM 9.0 | EC000886 |
| ETIM 10.0 | EC000886 |
| ECCN | NO US CLASSIFICATION |

| Environmental Product Compliance | |
|----------------------------------|-------------------------|
| RoHS Compliance Status | Compliant, No Exemption |

Downloads

Environmental Product Compliance

| Compliance Search | |
|--|-------------------|
| Environmental Product Compliance 284-344 | ↓ |

Documentation

| Bid Text | | | |
|----------|------------|-----------------|-------------------|
| 284-344 | 27.04.2017 | doc 23.50 KB | ↓ |
| 284-344 | 19.02.2019 | xml 2.49 KB | ↓ |

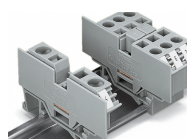
CAD/CAE-Data

| CAD data | |
|----------------------|-------------------|
| 2D/3D Models 284-344 | ↓ |

| CAE data | |
|---------------------------|-------------------|
| EPLAN Data Portal 284-344 | ↓ |
| WSCAD Universe 284-344 | ↓ |
| ZUKEN Portal 284-344 | ↓ |

Installation Notes

Installation



Snapping a cover plate onto open side of terminal block.

A cover plate must also be snapped onto the other side of the larger terminal block.

Subject to changes. Please also observe the further product documentation!

Current addresses can be found at: www.wago.com