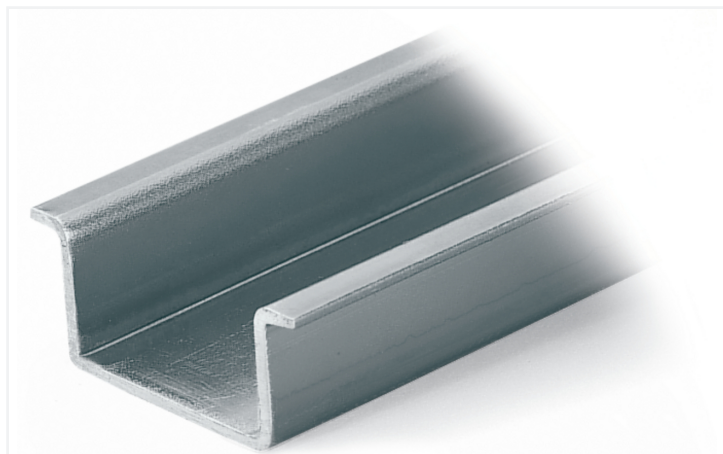


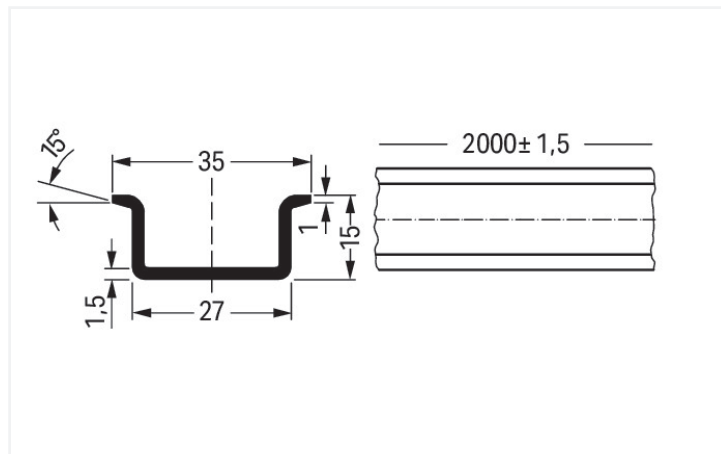
## Data Sheet | Item Number: 210-114

Steel carrier rail; 35 x 15 mm; 1.5 mm thick; 2 m long; unslotted; similar to EN 60715; silver-colored

<https://www.wago.com/210-114>



Color: ■ silver-colored



Dimensions in mm

### Physical data

|        |                        |
|--------|------------------------|
| Width  | 2000 mm / 78.74 inches |
| Height | 15 mm / 0.591 inches   |
| Depth  | 35 mm / 1.378 inches   |

### Material data

|           |                |
|-----------|----------------|
| Color     | silver-colored |
| Fire load | 0 MJ           |
| Weight    | 1325 g         |

### Commercial data

|                       |                                |
|-----------------------|--------------------------------|
| Product Group         | 2 (Terminal Block Accessories) |
| PU (SPU)              | 10 (1) pcs                     |
| Packaging type        | Box                            |
| Country of origin     | IT                             |
| GTIN                  | 4017332277174                  |
| Customs tariff number | 72169180000                    |

### Product Classification

|             |                      |
|-------------|----------------------|
| UNSPSC      | 30101804             |
| eCl@ss 10.0 | 27-40-06-02          |
| eCl@ss 9.0  | 27-40-06-02          |
| ETIM 9.0    | EC001285             |
| ETIM 10.0   | EC001285             |
| ECCN        | NO US CLASSIFICATION |

### Environmental Product Compliance

RoHS Compliance Status Compliant, No Exemption

### Downloads

#### Environmental Product Compliance

| Compliance Search                        |                   |
|--|-------------------|
| Environmental Product Compliance 210-114 | <a href="#">↓</a> |

### Documentation

| Bid Text |            |                 |                   |
|----------|------------|-----------------|-------------------|
| 210-114  | 19.02.2019 | xml<br>2.64 KB  | <a href="#">↓</a> |
| 210-114  | 31.08.2017 | doc<br>23.50 KB | <a href="#">↓</a> |

### CAD/CAE-Data

| CAD data             |                   |
|----------------------|-------------------|
| 2D/3D Models 210-114 | <a href="#">↓</a> |

| CAE data                  |                   |
|---------------------------|-------------------|
| EPLAN Data Portal 210-114 | <a href="#">↓</a> |
| WSCAD Universe 210-114    | <a href="#">↓</a> |
| ZUKEN Portal 210-114      | <a href="#">↓</a> |

### 1 Compatible Products

#### 1.1 Optional Accessories

##### 1.1.1 Installation

##### 1.1.1.1 Mounting accessories



[Item No.: 209-137](#)  
Mounting adapter; can be used as end stop; 6.5 mm wide; gray



[Item No.: 249-117](#)  
Screwless end stop; 10 mm wide; for DIN-rail 35 x 15 and 35 x 7.5; gray



[Item No.: 249-197](#)  
Screwless end stop; 14 mm wide; for DIN-rail 35 x 15 and 35 x 7.5; gray



[Item No.: 249-116](#)  
Screwless end stop; 6 mm wide; for DIN-rail 35 x 15 and 35 x 7.5; gray

## 1.1.2 Marking

### 1.1.2.1 Label



**Item No.: 210-808**

Labels; for Smart Printer; 9.5 x 25 mm; white



**Item No.: 210-708**

Labels; for TP printers; 9.5 x 25 mm; white

## Installation Notes

| DIN-Rail                                    | Item No. | Current [A] | Acc. to mm <sup>2</sup> /AWG/GU |
|---|----------|-------------|---------------------------------|
| DIN 35 x 7.5 (steel)                        |          |             |                                 |
| slotted                                     | 210-112  | 76          | 16/6                            |
| unslotted                                   | 210-113  | 76          | 16/6                            |
| DIN 35 x 15 (steel)                         |          |             |                                 |
| 1.5 mm thick                                | 210-114  | 125         | 35/2                            |
| 2.3 mm thick                                | 210-118  | 125         | 35/2                            |
| DIN 35 x 7.5 (Al)                           |          |             |                                 |
| unslotted                                   | 210-196  | 76          | 16/6                            |
| DIN 35 x 15 (Cu)                            |          |             |                                 |
| 2.3 mm thick                                | 210-198  | 309         | 150/6/0                         |
| Current applies to rails of 1 m/3'3" length |          |             |                                 |

When using standard DIN-rails as ground conductor busbars, please refer to the maximum current capacities listed above. Steel DIN-rails are not suited for PEN (ground and N-conductor) applications per EN 60947-7-2 (VDE 0611, Part 3).