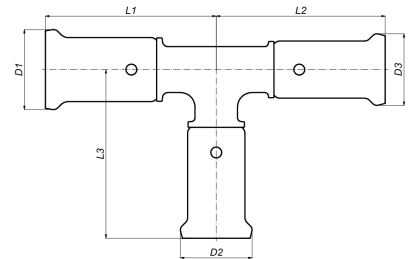


11PK-161414: T-centre and line Reduced 16x14x14



Commercial information

PVDF press fittings in combination with multilayer pipe, a completely corrosion-free system. The synthetic press fittings are made from injection moulded PVDF (Polyvinylidene fluoride)*. PVDF offers the user a unique combination of properties:

- Highly resistant to pressure and temperature
- Excellent mechanical strength
- Extreme flexibility: bending up to 10° is possible
- Perfectly suited for drinking water and food
- Highly resistant to chemicals and corrosion
- Embedding is possible without extra protection

Basic unit dimensions

| | |
|------------|----------|
| Height | 22 mm |
| Length | 94 mm |
| Width | 58 mm |
| Net weight | 0.043 kg |

Certificates

ATG, QB (CSTBat), DVGW Wasser, ETA, KIWA, ÖVGW Wasser, SINTEF, WRAS, KOMO, ÖN EN 21003-2/-3, GOST-R, ITC, TSU, AFNOR, PZH, STF, ACS, DNV-GL, Aenor, Sans 21003, Kontrol Biro, EMI

Applications

Potable water, Heating, Compressed air, Cooling, Demi Water, Sanitary

Solutions

Building installations, Industry, Utility, Shipbuilding

Technical characteristics

| | | | |
|--------------------------------------|--|----------------------------------|------------------------|
| Material connection 1 | Polyvinylidene fluoride (PVDF) | Angle | 90 Degrees |
| Surface protection connection 1 | Untreated | Outer pipe diameter connection 1 | 16 Millimetre |
| Surface treatment connection 1 | Untreated | Wall thickness, connection 1 | 0.7 Millimetre |
| Material connection 2 | Polyvinylidene fluoride (PVDF) | Outer pipe diameter connection 2 | 14 Millimetre |
| Surface protection connection 2 | Untreated | Wall thickness, connection 2 | 0.75 Millimetre |
| Surface treatment connection 2 | Untreated | Outer pipe diameter connection 3 | 14 Millimetre |
| Material connection 3 | Polyvinylidene fluoride (PVDF) | Wall thickness, connection 3 | 0.75 Millimetre |
| Surface treatment connection 3 | Untreated | Length of connection 1 | 47.5 Millimetre |
| Model | T-piece | Working length connection 1 | 20.5 Millimetre |
| Swept entry type (with inner radius) | ✗ | Length of connection 2 | 47 Millimetre |
| Reducing | ✓ | Working length connection 2 | 20 Millimetre |
| System specific | ✓ | Length of connection 3 | 47 Millimetre |
| Connection 1 | Press sleeve | Working length connection 3 | 20 Millimetre |
| Contour code connection 1 | TH | Wrench width | 0 Millimetre |
| Connection 2 | Press sleeve | Max. operating pressure at 20 °C | 16 Bar |
| Contour code connection 2 | TH | Wrench width union nut | 0 Millimetre |
| Connection 3 | Press sleeve | Medium temperature (continuous) | -10 70 Degrees celsius |
| Contour code connection 3 | TH | Standard Dimension Ratio (SDR) | 0 |
| Flange standard | Other | | |
| Material sealing | Ethylene-propylene diene monomer rubber (EPDM) | | |
| Main colour fitting | Black | | |
| High tensile strength | ✗ | | |
| Ring stiffness class | Other | | |
| With sealing rings/gaskets | ✓ | | |
| With drain valve | ✗ | | |
| With de-aerator | ✗ | | |
| With thermal insulation | ✗ | | |
| With buffer stud | ✓ | | |
| Capped | ✗ | | |
| FM quality mark | ✗ | | |
| LPCB quality mark | ✗ | | |
| ULC quality mark | ✗ | | |
| UL quality mark | ✗ | | |
| DIN-CERTCO certificate | ✗ | | |
| VdS quality mark | ✗ | | |
| With approval for TÜV | ✗ | | |
| DVGW quality mark for gas | ✗ | | |
| DVGW quality mark for water | ✓ | | |
| KIWA certified | ✓ | | |
| Gastec QA mark | ✗ | | |
| KOMO certified | ✓ | | |
| Type approval according to BBR/EKS | ✗ | | |