

xComfort Compact Distribution Boxes

Home match for a safe
electrical installation system



Board overview brochure

EATON

Powering Business Worldwide

Micro Compact distribution boxes



The smallest distribution board of this product family fascinates the user especially with its extremely fast way of attaching the device cover which automatically snaps into position thanks to an innovative locking mechanism. So screwing down or unscrewing the device cover is no longer necessary at all. For up to 2 or 4 module units

Benefit:	Features:
<ul style="list-style-type: none"> • Time-saving thanks to the extremely fast way of attaching the device cover using an innovative locking mechanism. 	<ul style="list-style-type: none"> • Degree of protection IP30(IK05) • Surface-mounted • Protection class II, totally insulated • 1-row, 2 and 4 module units • No tools required for enclosure assembly • Support rail made of plastic • Enclosure made of high-quality ABS plastic • No window • Glow wire test 650°C • Pre-marked metric areas for cable entry all around • Body RAL 9003 • Possibility of direct fixing on the wall, no need to drill holes into the enclosure

Mini Compact distribution boxes



It is the diversity of this member of the family that makes it so outstanding. An overall sufficient number of articles can be ordered to meet all the requirements of real life situations, from 2 to 6 module units, with or without a window, with or without connection terminals, and with a top-hung window as an option for retrofitting.

Benefit:	Features:
<ul style="list-style-type: none"> • Due to its diversity, it is the ideal solution for many applications – available with or without connection terminals and with a top-hung window suitable for retrofitting. 	<ul style="list-style-type: none"> • Degree of protection IP30 or IP20 (IK05) • Surface-mounted • Protection class II, totally insulated • 1-row, 2, 3, 4, 5 and 6 MU • Support rail made of plastic • Enclosure made of high-quality ABS plastic • Either with or without a window • Window lead-sealable • Glow wire test 650°C • Pre-marked metric areas for cable entry all around • Body RAL 9003 • Possibility of direct fixing on the wall, no need to drill holes into the enclosure

ECO Compact distribution boxes



Both as a surface-mounted and flush-mounted compact distribution board, this product series made of plastic attracts the customers' attention above all through its slim design and its interesting price/performance ratio. Truly classic products are its 12-module-unit versions which are usually used in hotel projects.

Benefit:	Features:
<ul style="list-style-type: none"> • Attractive price-performance ratio • Slim design 	<ul style="list-style-type: none"> • Degree of protection IP40 • Surface mounted / flush: 1-row, 5, 8, 12 and 18 module units • Surface mounted / flush: 2-rows, 24 and 36 module units • Surface mounted / flush: 3-rows, 36 module units • Surface-mounted: 3-rows, 54 module units • Protection class II • Glow wire test 850°C • Support rail made of metal

KLV energy compact distribution boxes



The current generation of the successful KLV series now provides even more flexibility. The family is complemented thanks to new 5-row flush-mounted and hollow-wall distribution boards with up to 60 modules plus 10 MU reserve, which are also equipped with expandable KSK combination plug-in terminals as standard. Additional cable holders enable tidy wiring. The stable device cover offers optimal protection for the operator, which is especially of great importance for the large 5-row version. In addition to the 30% wider wiring space on the side of the 5-row enclosure and significantly higher set of terminal strips for optimized cable entry and the new N-terminal block with plug-in technology for mounting laterally in the wall-pan or on the DIN-rail, the highlight is the new row-designation field. Here, electricity consumers, devices and circuits can be designated in each of the five rows and the rows with the

fully integrated film then receive permanent protection. Another highlight is the 3D plaster compensation, which not only provides compensation correction in the X and Y directions, but also an additional depth compensation of the entire door frame by up to 18 mm. In this way, a wide variety of wall surfaces can be leveled as standard, saving time and without additional parts. The updated range is rounded off by the new option of APW surface mounting, an integrated spirit level, 90 ° quick-release fasteners on the device cover and many new accessories that provide additional added value. Through the certification as a compact distribution board according to IEC/EN 60670-24 (PD) as well as according to EN 62208, the 1 to 5-row KLV energy distribution boards are the first choice for both small and large projects.

Benefit:
<ul style="list-style-type: none"> • Optimal protection for the user thanks to a stable device cover • Clearly structured wiring thanks to additional cable holders • Quick, easy and time-saving to mount thanks to: <ul style="list-style-type: none"> - 3D plaster compensation - KSK combined push-in terminals - Integrated marking slots - A spirit level for fast alignment - 90° quick-acting closures at the device cover

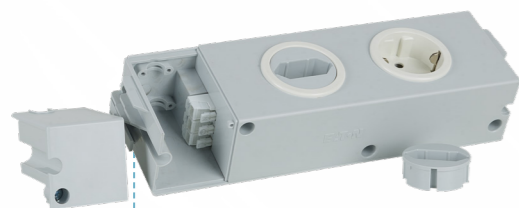
Features:
<ul style="list-style-type: none"> • Degree of protection IP30 • Protection class II, fully insulated • 1 to 5 rows, 12 module units and 2 spare MU in each row • Hollow-wall and flush-mounted versions • Flat door design • 3D plaster compensation • Integrated spirit level • Terminals for neutral and protective conductors • N-FI expansion terminal (FI = RCD = Residual Current Device) • Pre-marked cable entries on all sides • Door and cover frame, sheet steel RAL 9016 • Low halogen level • 5-row KLV with 30% larger wiring space on the side • ÖVE and VDE approvals • IEC/EN 62208 und IEC/EN 60670-24 (PD) • Option for surface mounting with APW



KLV multimedia compact distribution boxes

The current generation of the KLV series is now equipped with a pre-wired power strip with rotating inserts – in all 3 to 5-row multimedia distribution boards. The comfortable multimedia distribution boards comply with the IEC/EN 60670-24 GP standard. The high-quality basic equipment with mounting rail for patch modules, large continuous micro-perforated mounting plate, cable and device holder and a new power strip with two rotating inserts, is completed by connection brackets for interlinking the wall-pans in pairs.

KLV multimedia distribution boards are available in flat (F) version. For greater range of radio and WiFi signals as well as for optimized heat exchange in the housing, the door is equipped with a special plastic WiFi insert and an integrated ventilation system. Like the energy board, the multimedia KLV also includes the 3D plaster compensation and a spirit level in its standard scope of delivery.



New pre-wired power strip with two rotating inserts

Benefit:

- Space for patch modules on the insulated DIN rail
- Multimedia devices are easy to fix on the micro-perforated mounting plate or device holder
- Neat laying of cables thanks to cable holders included in the scope of delivery
- Faster installation thanks to pre-wired power strip with rotating inserts
- Patch cables can be conveniently routed to the outside underneath the power strip
- Good heat exchange thanks to the integrated ventilation system
- Greater range of the wireless signal than with standard sheet steel door
- Flexible expansion options, such as patch-rail
- Option for surface mounting with APW

Features:

- Degree of protection IP30
- 3 to 5 rows
- Hollow-wall and flush-mounted versions
- Flat door design
- Integrated spirit level
- 3D plaster compensation
- Top row with metal support rail
- Large continuous micro-perforated mounting plate
- Cable holders
- Device holder
- Pre-marked cable entries on all sides
- Door and cover frame, sheet steel RAL 9016
- Low halogen level
- IEC/EN 60670-24 (GP) and IEC/EN 62208
- Power strip with two rotating inserts
- Compatible with APW



KLV hybrid compact distribution boxes

The 5-row hybrid distribution board has also been upgraded. Equipped with enclosure advantages similar to those of the energy or multimedia housing, the hybrid enclosure combines both functions in a space-saving product.

They are available in 24 or 36 MU versions for switching and protection devices. Furthermore, every hybrid enclosure includes a separate functional unit with a micro-perforated mounting plate for telecommunication devices, cables and device holder as well as one pre-wired power strip with two rotating inserts.

Here, too, the special WiFi door is used, including an integrated ventilation system.

The hybrid distribution board also meets the requirements of the IEC/EN 60670-24 (PD) and IEC/EN 62208 standards.

Benefit:

- Energy and multimedia unit in one enclosure
- Greater range of the wireless signal than with standard sheet steel door
- Good heat exchange thanks to an integrated ventilation system
- Simple and time-saving assembly:
 - 3D plaster compensation
 - KSK plug-in terminal
 - Integrated marker slots
 - Spirit level for quick alignment
 - Pre-wired power strip
- Option for surface mounting with APW

Features:

- Degree of protection IP30
- Protection class II, totally insulated (functional unit energy)
- Protection class II (functional unit media) 1)
- 5 rows, 24 or 36 modules and 2 MU reserve per row
- Hollow-wall and flush-mounted versions
- Flat door design
- 3D plaster compensation
- Integrated spirit level
- Neutral and protective conductor terminals
- N-RCD extension terminal
- Pre-marked cable entries on all sides
- Door and frame, sheet steel RAL 9016
- WiFi door or sheet steel door
- Low halogen level
- VDE and ÖVE approvals
- Projects delivery form
- IEC/EN 62208 and IEC/EN 60670-24
- Pre-wired power strip with two rotating inserts

1) In order to achieve protection class II, all devices installed on the mounting plate must be fully insulated



The current generation of the KLV compact distribution board series is also offered in a project delivery form 4PR, which includes both the one-level and the two-level package. While the one-level package represents the standard configuration including the wall pan, the two-level package optionally includes the standard doors/frames or doors with WiFi insert and ventilation system. Large-scale projects can be implemented in standard versions or customized variants can be designed as well.



IKA Surface-mounted compact distribution boxes, IP65

The xComfort IKA series is a compact, surface-mounted IP65 distribution enclosure designed for residential, commercial, and light-industrial use. With twelve available sizes ranging from 4 MU to 72 MU, it offers the flexibility needed for a wide range of installation requirements. The enclosures are designed and approved according to IEC/EN 62208 and IEC/EN 60670-24, making them an ideal choice for energy distribution projects aligned with IEC/EN 61439.

To support different environmental conditions, the series includes versions made from durable ABS and high-quality, UV-resistant polycarbonate, ensuring long-lasting performance both indoors and outdoors. The

robust construction, continuous foamed sealing, and IP65 protection rating provide reliable safety and resistance against dust, moisture, and corrosion. This makes xComfort IKA particularly suitable for demanding applications such as photovoltaic installations, parking structures, ski stations, greenhouses, carpentry shops, workshops, and agricultural environments where fine particles or harsh conditions are common.

When combined with Eaton's portfolio of modular switching and protection devices—and configured easily through our xWired online tool—the xComfort IKA series delivers a complete, standards-compliant solution for IEC/EN 61439-3 energy distribution systems.

Benefit:

- Quick and easy to install thanks to the easy-to-mount PE/N terminal rail, fixing possibilities directly at the wall without having to drill holes into the enclosure and a spacious distance between the rails
- Reversing the door hinges can be done within seconds
- Pre-punched holes for cable insertions with a centration point
- Lead-sealing of enclosure cover and door does not require any additional parts

Features:

- Degree of protection IP65
- Protection class II, fully insulated
- Industrial version (PC) or PRO/Standard version(ABS)
- 1 to 4 rows, 12 and 18 module units
- Mini module with 4, 6 and 8 MU
- Glow wire test 850°C or 650°C
- CNC foamed sealing
- Fully removable DIN support rack
- Up to 46 mm wiring area under the DIN rail
- Module tolerance compensation in the cover
- Depth-adjustable DIN rail
- Neutral and protective conductor terminals
- Intuitive locking and unlocking of the door
- Body RAL 7035, door transparent
- Halogen-free

BF Flat distribution boxes, IP30



The xComfort BF flat distribution board is designed for installations where a slim, unobtrusive form factor is essential. Available in both surface-mounted and flush-mounted/hollow-wall versions, it provides a versatile solution for residential and commercial buildings.

Approved according to EN 62208, the series includes a wide selection of boards ranging from 2 to 7 rows, offering capacity for 48 to 231 module units. For fast and efficient installation, the DIN-rail rack can be completely removed,

simplifying the mounting of modular devices. Each enclosure is built from solid sheet steel with a durable, powder-coated polyester finish in White RAL 9016, and can be equipped with either a solid or transparent door to suit the application.

Using Eaton's online configurator, you can easily design a customized system by selecting your preferred door style, number of rows, and the required modular switching and protection devices.

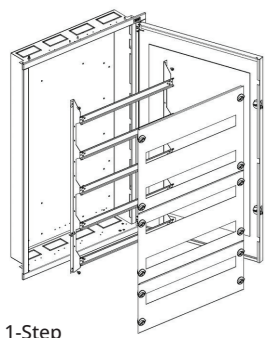
Benefit:

- Easy mounting of the components thanks to a convenient distance between the rows
- Removeable door frame in new 3-step variant to allow smooth on-site installation
- Plenty of space for switching and protective devices, as 24 or 33 module units per row and up to 7 rows per flat distribution board

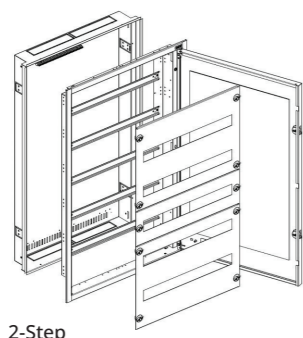
Features:

- Degree of protection IP30
- Surface-mounted- or Flush- mounted Flat Distribution Boards
- 2- to 7-rows 24MU/row
- 4- to 7-rows 33MU/row
- Protection class I
- Sheet steel enclosure powder coated (white RAL 9016)
- Sheet steel front plates with contacting to the enclosure
- Removable DIN-rail frame
- Generous wiring space
- 150 mm DIN-rail distance (ideal for switchgear busbar system)
- Complete enclosure (including N/PE-terminals)
- Efficient cable insertion at the top/bottom
- Can be used as a media distribution boards

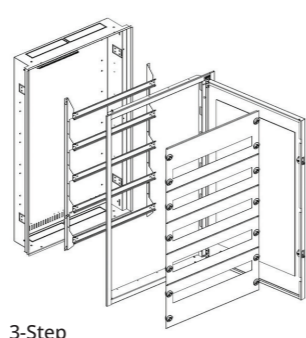
BF-U



1-Step

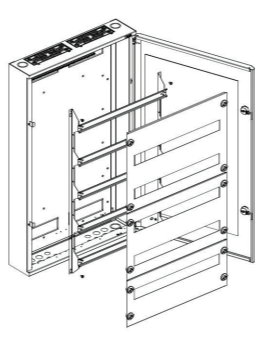


2-Step



3-Step

BF-O



BC-A2, Compact Distribution Boxes, IP40



The xComfort BC series is a surface-mounted distribution enclosure designed for residential and commercial use. The updated BC-A2 line offers improved features that provide greater versatility and make assembly and installation even easier.

Approved according to EN 62208 and EN 60670-24, the BC-A models are available from 1 to 4 rows and offer capacities from 12 to 54 module units. The fully removable DIN-rail rack can be positioned at two different heights, supporting various circuit breaker sizes.

The series offers IP40/IK08 protection and includes versions in Protection Class II (fully insulated) or Protection Class I. All enclosures are made from durable ABS or polystyrene in white RAL 9003, with a clean door design that fits seamlessly into any environment.

Combined with Eaton's modular switching and protection devices and supported by the online configurator, the BC series provides a flexible and compliant solution for power distribution according to IEC/EN 61439-3.

Benefit:

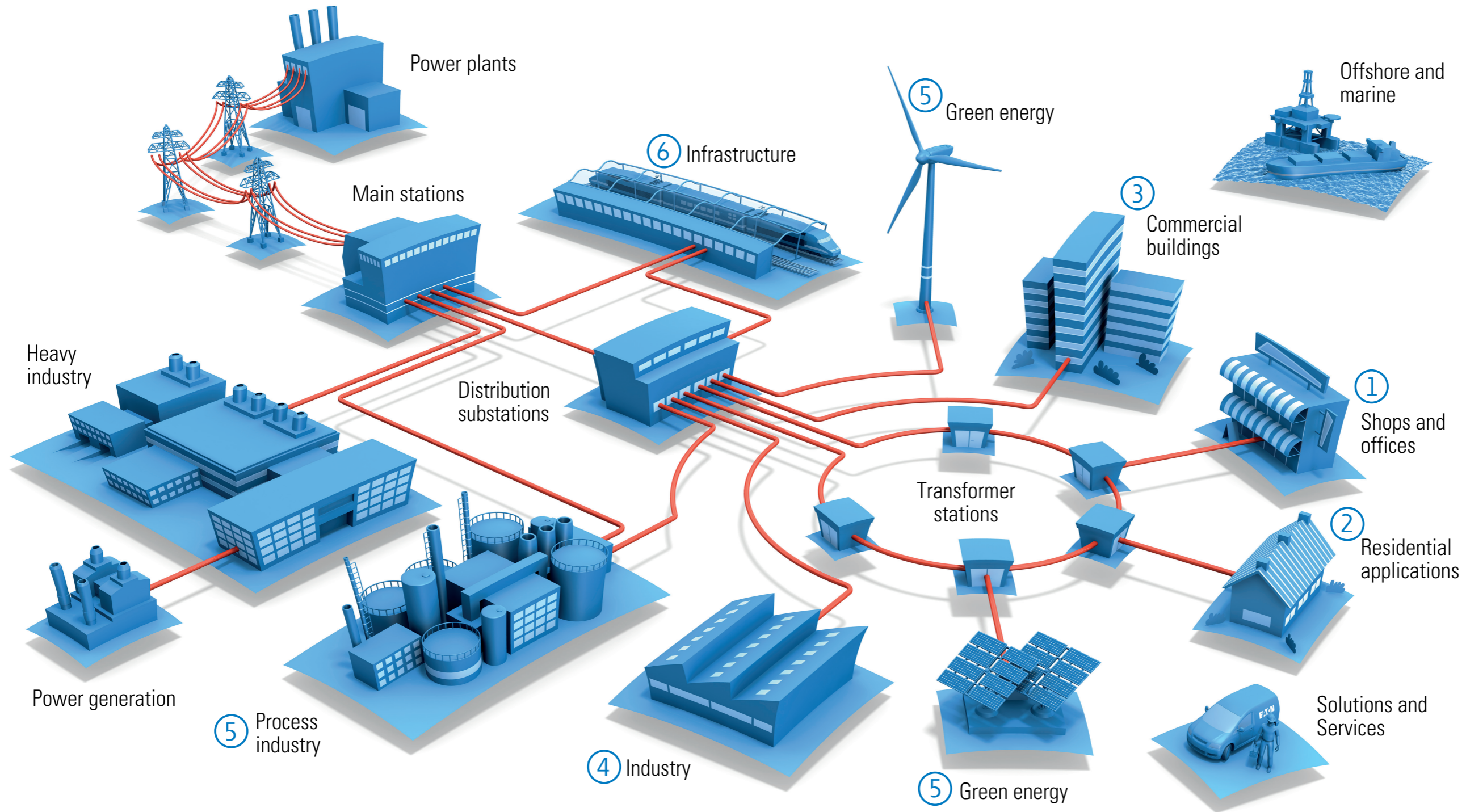
- Optimized wiring space for fast and convenient installation
- Compact formats for any setup (offering both wide and narrow enclosures)
- Reliable compliance and safety (fully certified to EN 62208 and EN 60670-24 standards) -
- Adaptable mounting system (the adjustable DIN rail offers two height positions)

Features:

- Up to 4 rows, 12, 13 or 18 module units per row
- DIN-rail distance of 125 mm for efficient wiring
- Pre-marked cable entries at the top and the bottom
- Neutral and Protective Earth screw type terminals included
- Spirit level is included for easy and accurate installation
- IP30, Class II (totally insulated)
- Durable ABS Plastic, White RAL 9003



Areas of application



Shops and offices ①

ECO



KLV



Multimedia



BF



KLV Hybrid



Residential applications ②

Micro



Mini



Eco



KLV



Multimedia



BF



IKA Prof.



BC-A2



Commercial buildings, Hotels and Infrastructure ③ + ⑥

ECO



KLV



IKA Prof.



BF



BC-A2



KLV Hybrid



Industry & Processindustry, green energy ④ + ⑤

IKA Industrial made of polycarbonate



Choose convenience with pre-wired distribution boards



Choose the right devices from a variety of standardized components and empty enclosures to design your residential project. Eaton offers a lot of technical information about the components that you need to create the design verification according to EN 61439-3 yourself. Or you can choose a standardized, pre-wired compact distribution board created by Eaton and provided with a documentation package including design verification. Focus on the essentials, save time and Eaton will take care of the rest.

Online configurator xWired - Design your customized compact distribution boards



xComfort KLV and the switching and protection devices are modular and therefore any desired combination can be assembled. In addition to a number of standard prewired distribution boards, Eaton also supplies customized configurations on request. If you are not yet sure which type of distribution board is most suitable for your situation, simply use Eaton's configurator with ordering function. Learn more: www.eaton.com/xWired

Protective Devices

Protective Devices

Residual Current Devices (RCDs)



Residual Current Devices Digital (RCDs)



Fire Protection Device



Leakage Current Monitor



Combined RCD/ MCB Devices



Miniature Circuit Breakers (MCBs)



Manual Motor Starter and Power Limiter



Accessories for Protective Devices

Auxiliary Switch



RCD-Tripping Module



Shunt Trip Release



Undervoltage Release



Automatic Switching Device



Surge Protection Device



Measuring Instruments



Other Accessories



Controlling & Switching

Switches



Installation Contactors



Relays



Signalling Devices



Transformers

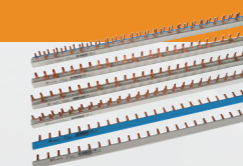


Control-Relay Easy



Busbar System

Plug-in busbar and Contactors Devices Easy Busbar block



Benefit:

- Perfect image at the end customer's thanks to a single-source solution
- The entire distribution board solution is technically inter-coordinated
- The ideal solution for many applications, both in the private and industrial sector
- Expansions and adjustments at a later point in time are always possible

Eaton is an intelligent power management company dedicated to protecting the environment and improving the quality of life for people everywhere. We make products for the data center, utility, industrial, commercial and institutional, machine building, residential, aerospace and mobility markets. We are guided by our commitment to do business right, to operate sustainably and to help our customers manage power today and well into the future. By capitalizing on the global growth trends of electrification and digitalization, we're helping to solve the world's most urgent power management challenges and building a more sustainable society for people today and generations to come.

Founded in 1911, Eaton has continuously evolved to meet the changing and expanding needs of our stakeholders. With revenues of \$27.4 billion in 2025, the company serves customers in 180 countries. For more information, visit www.eaton.com. Follow us on [LinkedIn](#).



Eaton Industries (Austria) GmbH
Schedyergasse 42
1210 Vienna
Austria

Eaton
EMEA Headquarters
Route de la Longeraie 7
1110 Morges, Switzerland
Eaton.com

© 2020 Eaton
All Rights Reserved
Printed in Austria
Publication No. BR014015EN
Article number 180074-MK
April 2026

The products, information and prices contained in this document are subject to change. The same is true for any errors or omissions. Only the order confirmation and the technical documentation received from Eaton are binding. Photos and illustrations are indicative only and do not serve as proof of any appearance or functionality. Their use in any form must be approved in advance by Eaton. The same applies for brand names (in particular Eaton, Moeller, Cutler-Hammer, Cooper and Bussmann). Eaton's terms of sale, as published on Eaton's websites and included with order confirmations received from Eaton, apply.

Eaton is a registered trademark.

All other trademarks are property of their respective owners.

