

Focus On Safety



EATON

Powering Business Worldwide

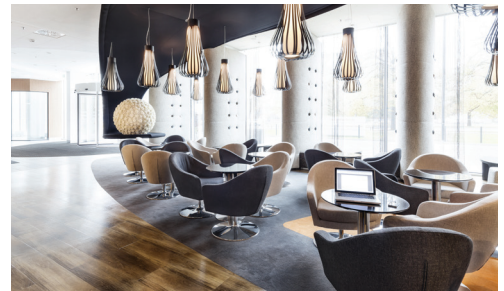
Focus On Safety Safety luminaires ...

One look

Installers and project managers face product selection and installation challenges every day. Eaton's new RoundTech range makes choosing the right product easy. Its unique **eFocus** capability allows for light distribution to be adjusted for **escape routes or open areas** illumination, resulting in less order codes and simpler product selection.

Its round design helps achieve **aesthetic consistency** with other building devices and also makes install simple, particularly for recessed finishing, as no specific tools or modifications are required.

The RoundTech MS range covers **most monitoring types and technologies**. It benefits from the latest breakthroughs, such as high performance **lithium batteries** and increased affordance functionality for better recognition of ceiling mounted exit signs which are also part of the range.



...suitable for surface mounting

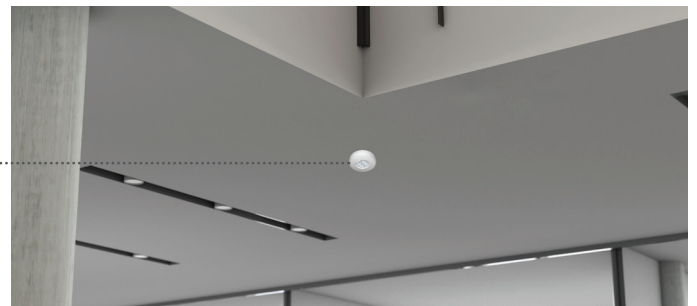


RoundTech MS SEO

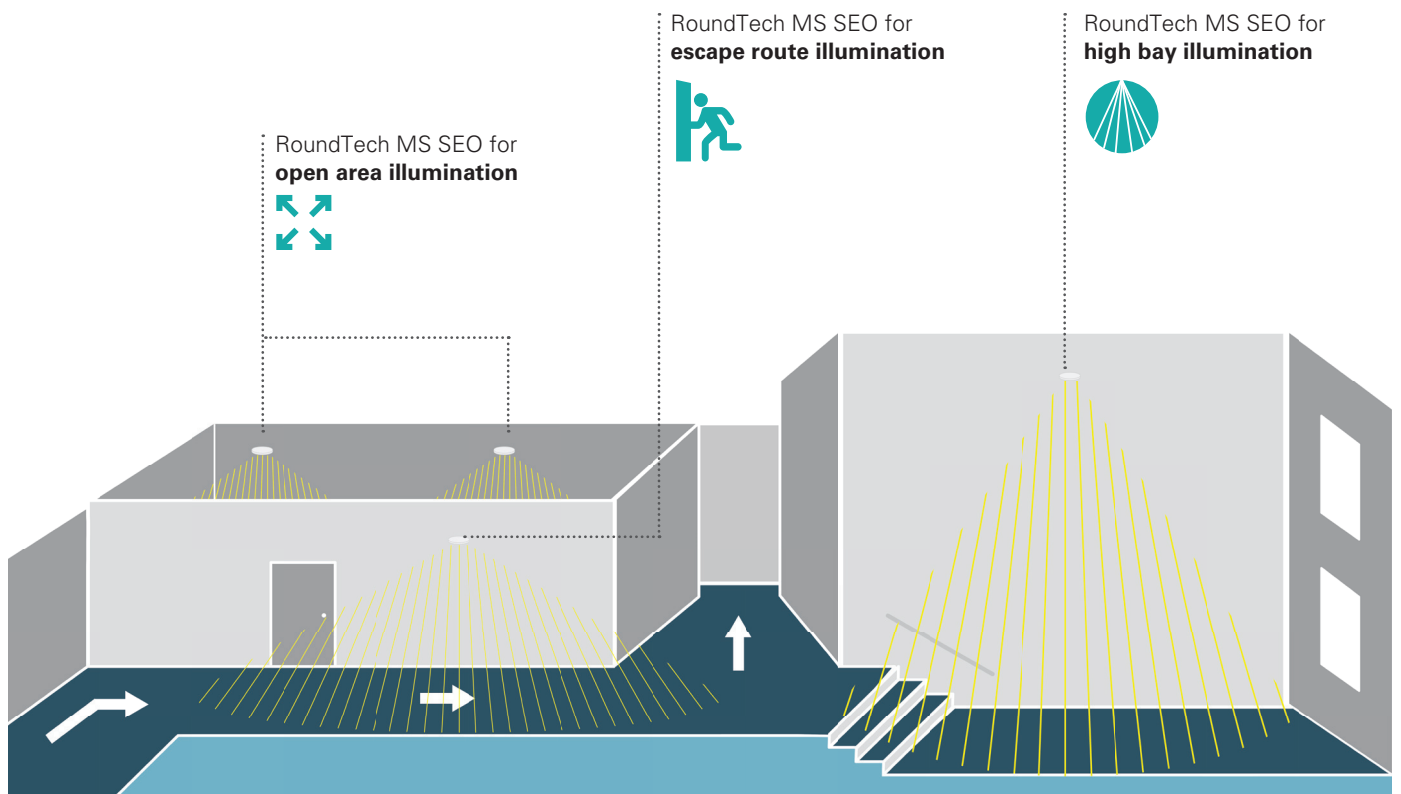
Harmonious integration

RoundTech MS SEO

Safety light for
Escape route and
Open area illumination



Where to use RoundTech MS





RoundTech luminaires are innovative solutions which incorporate eFocus capability, making it instantly configurable for both escape routes and anti-panic areas, simplifying ordering and last-minute changes, as well as reducing errors.

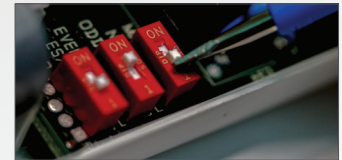
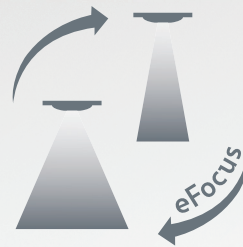
Leading the way with eco-friendly lithium batteries and low-temperature light engine, RoundTech is available in 150lm, 200lm and 400lm variants and Low Bay options for installation up to 6m height delivering up to 23,5m spacing at 3m height plus a High Bay version for up to 23.5m height.

The LEDs within the RoundTech alongside the automatic testing and monitoring devices (using CGLine+ versions) significantly reduce the operating and maintenance costs of the installation.

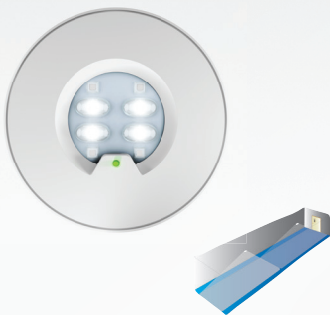
One reference for escape route and open area illumination

Thanks to eFocus technology, the same product can be installed for Escape Route (1lx) and Open Area (0.5lx) illumination simplifying ordering and last-minute on-site changes, as well as reducing errors.

eFocus programming allows you to select what illumination you need for the application. Both wide area anti-panic lighting and narrow focused illumination is possible from the same fitting. Simply select symmetric (antipanic) or asymmetric lighting (escape route) via the dip switch before installing.



Easy switch from one type of light distribution to another



eFocus, Escape Route light distribution, enables installations for corridors, escape routes and maximizes the distance between lighting fixtures. A maximum spacing of up to 39m between luminaires reduces the number of required light points and an application range from 2.5m up to 6m for 1Lux, enables mounting at the normally occurring heights.



eFocus, Open Area light distribution, enables installations for large areas where no fixed escape route is defined, meaning that the complete area must be illuminated. maximum spacing of up to 22,5m between luminaires reduces the number of required light points and an application range from 2.5m up to 23,5m for 0.5Lux, enables mounting at the normally occurring heights.

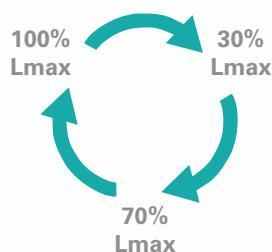


Lighting performance for low bay or high ceiling

- Luminous flux of 150lm, 200lm and 400lm
- Installation up to 23.5m with optimum spacing of 39m for 1lux illumination
 - LowBay: Installation up to 6m height
 - HiBay: Installation up to 23.5m height
- Brightness selectable in mains operation (60lm) via magnet with additional setting (30%, 70%, 100%)



Easy configuration of light level thanks to Eaton magnet



Same look and feel for IP44 and IP65 variants

IP44

IP65

Customization for even better integration

Opportunities to further harmonize design look and feel with a full spectrum of customized colorways.



White
RAL9003



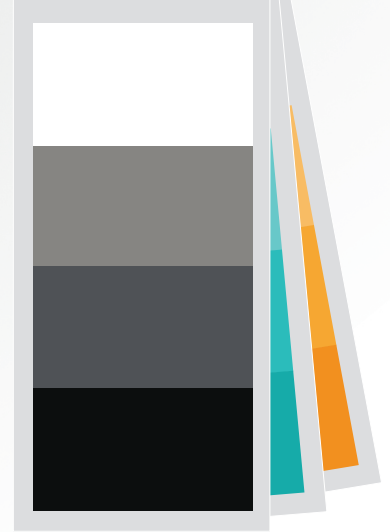
Silver gloss
RAL9007



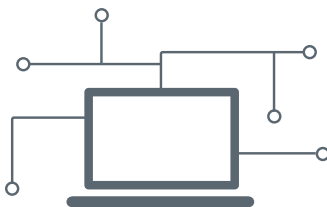
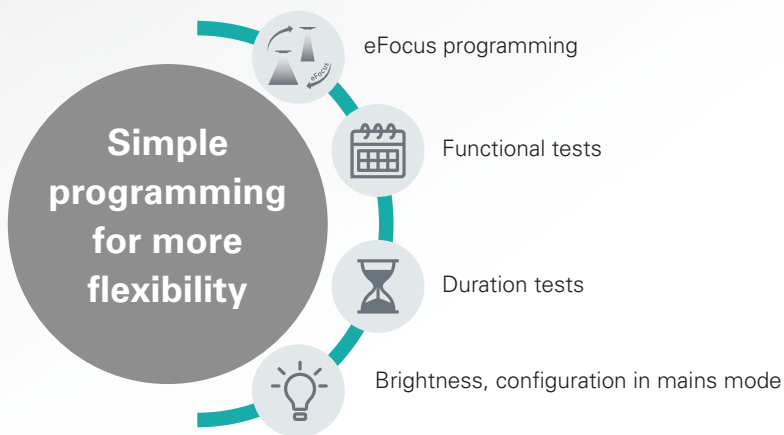
Dark grey
RAL7015



Black mat
RAL9005



Simple programming for more flexibility



Keeping your system operational Limiting operational and maintenance costs

The use of LEDs, automatic testing and monitoring devices (using CGLine+ versions) significantly reduce the operating and maintenance costs of the installation.

- Automatic tests and individual monitoring
- Blocking mode and rest mode to keep battery fully loaded during site works or during vacancy of a building
- Compatible with VisionGuard visualization software
- Can be added to current BMS connection solutions



*VisionGuard
visualization software*

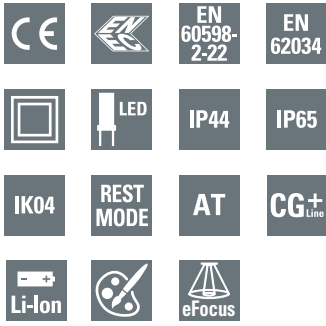
Protecting lives and the environment

- Reduced impact on the environment throughout its life cycle (design, manufacture, use, recycling)
- Conform to REACH and ROHS
- Batteries without Cadmium
- Latest generation of high-performance LEDs / Low consumption
- Brightness in mains mode can be also adjusted (30, 70, 100%) on the CGLine+ variants
- Use in Maintained & Non-Maintained mode
- Monitored solutions (CGLine+) allow to switch off the system in business idle times, enabling energy savings



RoundTech MS SEO

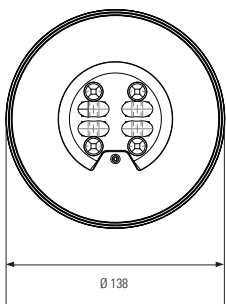
Medium Surface Safety luminaire for Escape route or Open area



RoundTech MS SEO



Dimensions in mm



RoundTech Medium Surface

- LED self-contained safety luminaire
- Installation up to 23.5m with optimum spacing of 39m for 1lux illumination
 - LowBay: Installation up to 6m height
 - HiBay: Installation up to 23.5m height
- eFocus programming: narrow and wide light distribution, programmed by the user
 - One product applicable for Escape Route or Open Area illumination
 - User / installer to define light distribution to fit the application
- Suitable for installation in concrete ceilings where recessed variant can't sit
- Suitable for use in cinemas, theatres, shopping malls, industrial units, healthcare or hotels
- Automatic test for reduced inspection effort in autonomous installation or connection to CGLine+
- Simple fault analysis and status display via bicolor LED
- Selectable operation mode (Maintained or Non-Maintained) via switch or external contact
- Brightness selectable in mains operation (60lm) via magnet with additional setting (30%, 70%, 100%)
- Low eco footprint thanks to its eco-design, low consumption and lithium battery
- Other colour options available (Black, Dark grey, silver)

Luminous flux	150lm, 200lm, 400lm
Operation	Non-Maintained, Maintained / Non-Maintained
Duration	1h or 3h
Testing system	Test by magnet, Automatic Test, test by remote control (TLU) Telecommand
Connection terminals	up to 1x2.5 mm ² with screw up to 1x2.5 mm ² with screw, removable up to 2x2.5 mm ² screwless pushwire In & Out mains terminals (L, N, E) CGLine+ bus through-wiring up to 2,5 mm ²
Rated voltage	220-240 V AC, 50/60 Hz
Housing material	Polycarbonate (850 °C glow wire resistant)
Housing colour	White RAL9003 (custom color variants available)
Insulation Class	Class II
Color Rendering Index	R70
Color Temperature	5700K
Light source	4 LEDs Escape Route / 4 LEDs Open Area
Permissible ambient temperature	+5°C to +45°C

Ordering details

Order code	Description					
Stand Alone						
RT2SSO150SA1H	RoundTech MS SO SA NM 1H IP44	Open area	0.6VA/0.3W	1h	150 lm	LiFePO4 3.2V / 1.5Ah
RT2SSO150SA3H	RoundTech MS SO SA NM 3H IP44	Open area	0.6VA/0.3W	3h	150 lm	LiFePO4 3.2V / 3Ah
RT2SSEO200STF1HIP	RoundTech MS SEO STF MNM 1H IP65	✓	1.8VA/1.1W	1h	200 lm	LiFePO4 3.2V / 1.5Ah
RT2SSEO200STF3HIP	RoundTech MS SEO STF MNM 3H IP65	✓	1.8VA/1.1W	3h	200 lm	LiFePO4 3.2V / 3Ah
Auto-test						
RT2SSEO200ATF1H	RoundTech MS SEO ATF MNM 1H	✓	1.8VA/1.1W	1h	200 lm	LiFePO4 3.2V / 1.5Ah
RT2SSEO200ATF3H	RoundTech MS SEO ATF MNM 3H	✓	1.8VA/1.1W	3h	200 lm	LiFePO4 3.2V / 3Ah
RT2SSEO200ATF1HIP	RoundTech MS SEO ATF MNM 1H IP65	✓	1.8VA/1.1W	1h	200 lm	LiFePO4 3.2V / 1.5Ah
RT2SSEO200ATF3HIP	RoundTech MS SEO ATF MNM 3H IP65	✓	1.8VA/1.1W	3h	200 lm	LiFePO4 3.2V / 3Ah
RT2SSEO400ATF1HIP	RoundTech MS SEO ATF MNM 1H IP65	✓	1.8VA/1.1W	1h	400 lm	LiFePO4 3.2V / 3.2Ah
CGLine+						
RT2SSEO200CGL1HIP	RoundTech MS SEO CGL+ MNM 1H IP65	✓	1.8VA/1.1W	1h	200 lm	LiFePO4 3.2V / 1.5Ah
RT2SSEO200CGL3HIP	RoundTech MS SEO CGL+ MNM 3H IP65	✓	1.8VA/1.1W	3h	200 lm	LiFePO4 3.2V / 3Ah
● RT2SSEO200CGL3HIPB	RoundTech MS SEO CGL+ MNM 3H IP65 BLACK	✓	1.8VA/1.1W	3h	200 lm	LiFePO4 3.2V / 3Ah
● RT2SSEO200CGL3HIPG	RoundTech MS SEO CGL+ MNM 3H IP65 GREY	✓	1.8VA/1.1W	3h	200 lm	LiFePO4 3.2V / 3Ah
● RT2SSEO200CGL3HIPs	RoundTech MS SEO CGL+ MNM 3H IP65 SILVER	✓	1.8VA/1.1W	3h	200 lm	LiFePO4 3.2V / 3Ah
RT2SSEO400CGL1HIP	RoundTech MS SEO CGL+ MNM 1H IP65	✓	1.8VA/1.1W	1h	400 lm	LiFePO4 3.2V / 3.2Ah
CGLine+ High bay variant for application up to 12m of height						
RT2SHEO200CGL3HIP	RoundTech MS HEO CGL+ MNM 3H IP65	✓	1.8VA/1.1W	3h	200 lm	LiFePO4 3.2V / 3Ah
RT2SHEO400ATF1HIP	RoundTech MS HEO ATF MNM 1H IP65	✓	1.8VA/1.1W	1h	400 lm	LiFePO4 3.2V / 3.2Ah
RT2SHEO400CGL1HIP	RoundTech MS HEO CGL+ MNM 1H IP65	✓	1.8VA/1.1W	1h	400 lm	LiFePO4 3.2V / 3.2Ah

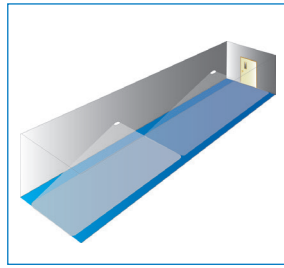
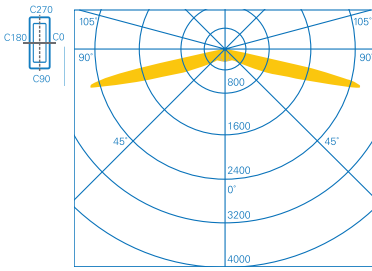
Accessories

	RT2S-BAT1	Battery Pack LifePO4 3.2V 1.5AH
	RT2S-BAT3	Battery Pack LifePO4 3.2V 3AH
	EMN	Eaton Magnet for configuration and tests

RoundTech MS SEO - Light performance

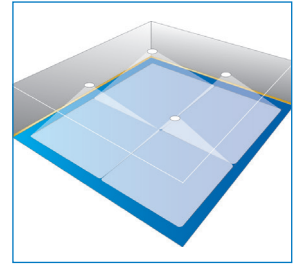
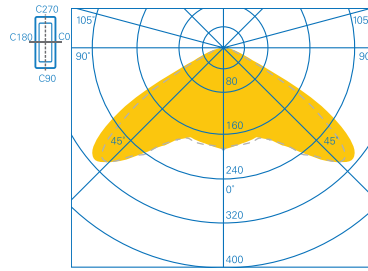
Medium Surface Safety luminaire for Escape route or Open area

RoundTech MS Escape Route light distribution



Escape route for 1 lux

RoundTech MS Open Area light distribution



Open area for 0.5 lux

LowBay - Planning help for RoundTech 1.0 lx / 0.5lx

Maintenance factor MF = 94 %, battery operation and distances in m

	Height [m]	Lux level directly under				
			1	2	3	4
Ceiling mounting Escape route center 400lm LowBay	3,0	9,0	2,6 (3,3)	6,7 (8,4)	11,4 (13,1)	26,2 (29,5)
	3,5	6,6	2,8 (3,5)	7,1 (8,8)	12,5 (14,4)	28,8 (32,7)
	4,0	5,0	3,1 (3,6)	7,3 (9,2)	13,4 (15,6)	31,3 (35,7)
	5,0	3,2	3,6 (4,1)	8,1 (10,0)	15,1 (17,8)	35,6 (41,1)
	6,0	2,2	3,9 (4,6)	9,2 (10,5)	8,2 (19,6)	39,2 (45,9)
	2,5	6,6	2,0 (2,5)	4,9 (6,2)	8,9 (10,3)	20,3 (23,4)
Ceiling mounting Escape route center 200lm LowBay	3,0	4,6	2,3 (2,6)	5,2 (6,6)	9,8 (11,5)	23,0 (26,3)
	3,5	3,3	2,5 (2,8)	5,7 (7,0)	10,6 (12,6)	25,1 (29,0)
	4,0	2,6	2,7 (3,1)	6,2 (7,2)	11,3 (13,5)	26,9 (31,5)
	5,0	1,6	2,9 (3,6)	7,1 (8,1)	2,3 (15,1)	21,8 (35,7)
	6,0	1,1	2,8 (3,9)	7,8 (9,2)	1,2 (10,3)	20,6 (39,3)

Luminaire type	Height (m)	Distance for 1 lx (0.5 lx)			
		1	2	3	4
Ceiling mounting Room illumination 400lm LowBay	2,5	4,3 (5,0)	10,3 (11,8)	4,3 (5,0)	9,6 (10,7)
	3,0	4,7 (5,5)	11,5 (13,2)	4,7 (5,5)	10,8 (12,1)
	3,5	5,0 (5,9)	12,5 (14,4)	5,0 (5,9)	11,9 (13,5)
	4,5	5,4 (6,6)	14,0 (16,7)	5,4 (6,6)	13,7 (15,9)
	5,5	5,5 (7,2)	15,1 (18,5)	5,5 (7,2)	15,4 (17,9)
	6,0	5,5 (7,3)	15,5 (19,3)	5,5 (7,3)	15,8 (18,8)
Ceiling mounting Room illumination 200lm LowBay	2,5	3,8 (4,5)	8,9 (10,0)	3,8 (4,5)	9,1 (10,3)
	3,0	4,0 (5,0)	9,8 (11,3)	4,0 (5,0)	10,1 (11,7)
	3,5	4,0 (5,2)	10,5 (12,5)	4,0 (5,2)	10,9 (12,9)
	4,0	3,9 (5,4)	11,0 (13,5)	3,9 (5,4)	11,5 (13,9)

* Spacing tables above are examples of performance of certain models with specific lumen output, installed on specific heights. Complete performance characteristics for all models and all installation heights and can be derived by the use of the LDT files available on request.



Eaton is an intelligent power management company dedicated to improving the quality of life and protecting the environment for people everywhere. We are guided by our commitment to do business right, to operate sustainably and to help our customers manage power today and well into the future. By capitalizing on the global growth trends of electrification and digitalization, we're accelerating the planet's transition to renewable energy, helping to solve the world's most urgent power management challenges, and doing what's best for our stakeholders and all of society.

Founded in 1911, Eaton is marking its 100th anniversary of being listed on the New York Stock Exchange. We reported revenues of \$20.8 billion in 2022 and serve customers in more than 170 countries.

For more information, visit [Eaton.com](https://www.eaton.com).

Changes to the products, to the information contained in this document, and to prices are reserved; so are errors and omissions. Only order confirmations and technical documentation by Eaton is binding. Photos and pictures also do not warrant a specific layout or functionality. Their use in whatever form is subject to prior approval by Eaton. The same applies to Trademarks (especially Eaton, Moeller, and Cutler-Hammer). The Terms and Conditions of Eaton apply, as referenced on Eaton Internet pages and Eaton order confirmations.

Eaton
EMEA Headquarters
Route de la Longeraie 7
1110 Morges, Switzerland
[Eaton.eu](https://www.eaton.eu)

© 2023 Eaton
All Rights Reserved
July 2023

Eaton is a registered trademark.

All other trademarks are property of their respective owners.