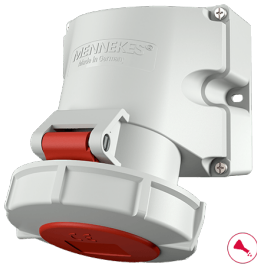


\$ctx.MennekesClassificationSystem_1_0_classGeneral_producttitle_value

Part no. 9560



Technical specifications

Ampere	32 A
Poles	4 p
Voltage	400 V
Clock position	6 h
Hertz	50-60 Hz
Connection technology	Screw terminals
Contact	highly heat resistant contact carrier, nickel plated contacts
Protection type	IP67
Weight	541 g

Drawing