

136-025 7W 4000K specific configuration
Ceiling light | Ø180mm | 5/7 Watt | 2700K/3000K/4000K

Introduction

Purpose of this Document

This document provides information for 136-025 7W 4000K. During measurement, the product is used in a different mode where output power, colour temperature and/or beam angle are changed from factory standard. These adjustments can be made without altering the product and are designed to be set by the installer. In most cases, the options are set through switches on the product.

Results

Total input power	7.1 W
Correlated Colour Temperature	3961 K
Total lumen output	688 lm
Efficiency	97 lm/W

Electrical measurement details

Input Power

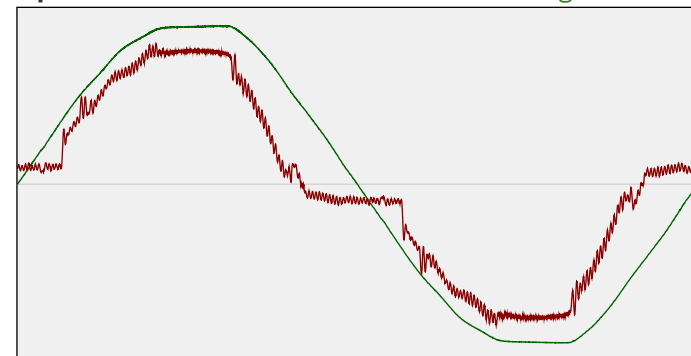
RMS Input voltage feed. V_{RMS}	230 V
RMS Input current feed. I_{RMS}	0.033 A
Total input power	7.1 W

Frequency of input power	50 Hz
Power factor	0.95
Displacement power factor	0.98

Total harmonic distortion of the current	26.46%
Total harmonic distortion of the voltage	2.7%

Input Power Curve

Voltage - Current



Efficiency

Radiated power efficiency: 29.5%



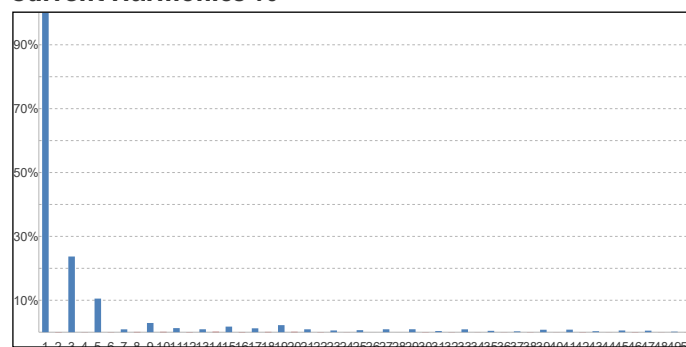
Lumen efficiency: 97 lm/W



Harmonics

3rd Harmonic	23.7%
5th Harmonic	10.52%
7th Harmonic	0.9%
9th Harmonic	2.89%
11th Harmonic	1.28%

Current Harmonics %



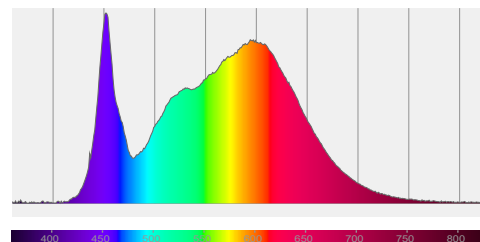
136-025 7W 4000K specific configuration

Colour measurement details

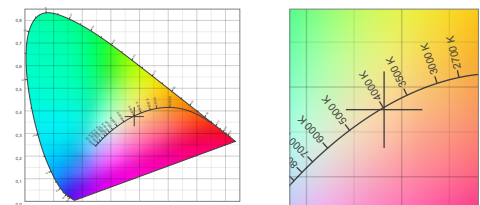
Total lumen output 688 lm
 Correlated Colour Temperature 3961 K
 Colour coordinates CIE 1931 (x;y) = (0.382;0.375)
 Colour deviation from BBL Duv = -0.0012

TM30-18 Colour Fidelity Index R_f 84.8
 TM30-18 Colour Gamut Index R_g 96.0
 Colour Rendering Index (Ra) CRI 84.8
 Colour Rendering Index. (red component) $R_9 = 14.7$

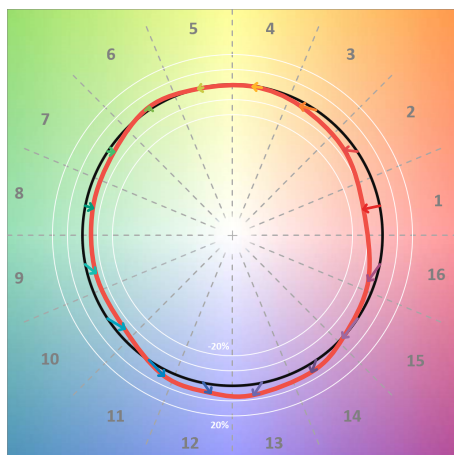
Colour Quality Scale CQS = 83.3
 Television Lighting Consistency Index TLCI = 71



Relative spectral power distribution



TM30 details

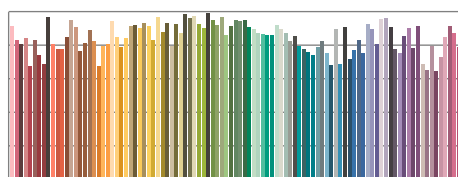


TM30 Colour vectors per hue bin

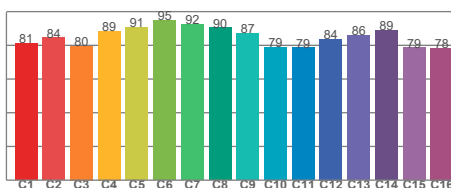


TM30 Colour distortion

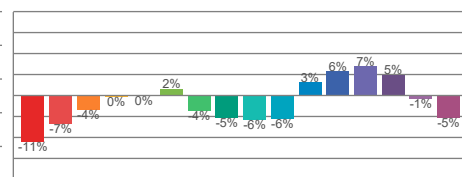
Hue Bin	R_f	Shifts (%)	
		Chroma	Hue
C1	81	-11%	0%
C2	84	-7%	6%
C3	80	-4%	10%
C4	89	0%	6%
C5	91	0%	3%
C6	95	2%	-1%
C7	92	-4%	-2%
C8	90	-5%	1%
C9	87	-6%	7%
C10	79	-6%	12%
C11	79	3%	14%
C12	84	6%	6%
C13	86	7%	-7%
C14	89	5%	-7%
C15	79	-1%	-16%
C16	78	-5%	-12%



TM30-18 R_f -values per reference colour

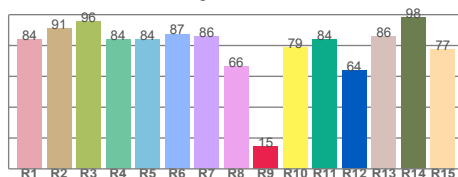


TM30-18 R_f -values per hue bin

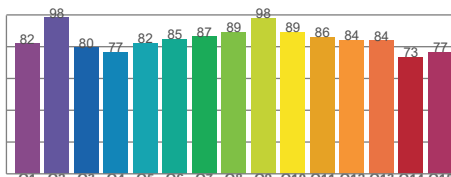


TM30 Chroma shift

Colour Quality details



Colour Rendering Index



Colour Quality Scale