

136-025 7W 2700K specific configuration
Ceiling light | Ø180mm | 5/7 Watt | 2700K/3000K/4000K

Introduction

Purpose of this Document

This document provides information for 136-025 7W 2700K. During measurement, the product is used in a different mode where output power, colour temperature and/or beam angle are changed from factory standard. These adjustments can be made without altering the product and are designed to be set by the installer. In most cases, the options are set through switches on the product.

Results

Total input power	6.9 W
Correlated Colour Temperature	2660 K
Total lumen output	639 lm
Efficiency	93 lm/W

Electrical measurement details

Input Power

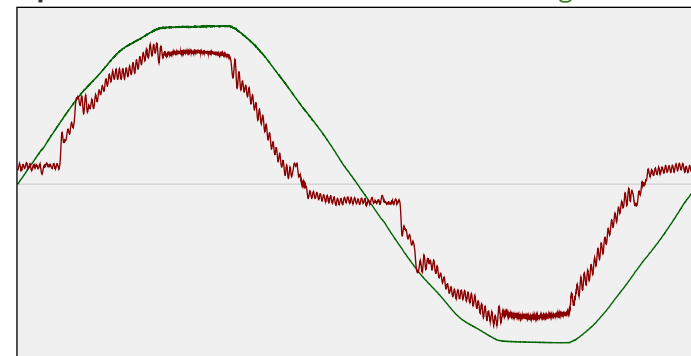
RMS Input voltage feed. V_{RMS}	230 V
RMS Input current feed. I_{RMS}	0.032 A
Total input power	6.9 W

Frequency of input power	50 Hz
Power factor	0.95
Displacement power factor	0.98

Total harmonic distortion of the current	25.08%
Total harmonic distortion of the voltage	2.6%

Input Power Curve

Voltage - Current



Efficiency

Radiated power efficiency: 28.4%



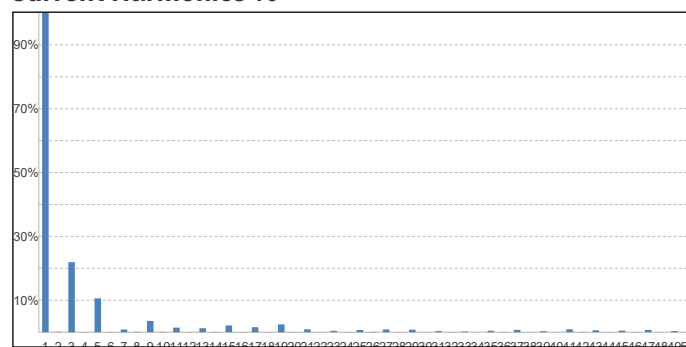
Lumen efficiency: 93 lm/W



Harmonics

3rd Harmonic	21.93%
5th Harmonic	10.59%
7th Harmonic	0.85%
9th Harmonic	3.52%
11th Harmonic	1.44%

Current Harmonics %



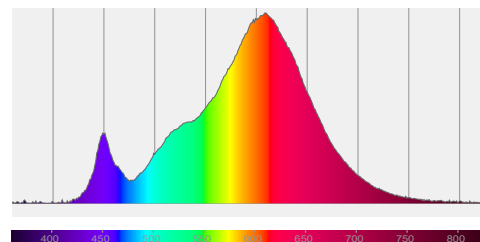
136-025 7W 2700K specific configuration

Colour measurement details

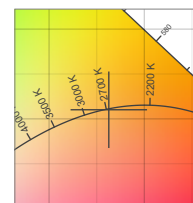
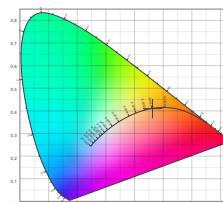
Total lumen output 639 lm
 Correlated Colour Temperature 2660 K
 Colour coordinates CIE 1931 (x;y) = (0.463;0.410)
 Colour deviation from BBL Duv = -0.0004

TM30-18 Colour Fidelity Index R_f 84.9
 TM30-18 Colour Gamut Index R_g 96.8
 Colour Rendering Index (Ra) CRI 82.3
 Colour Rendering Index. (red component) $R_9 = 4.6$

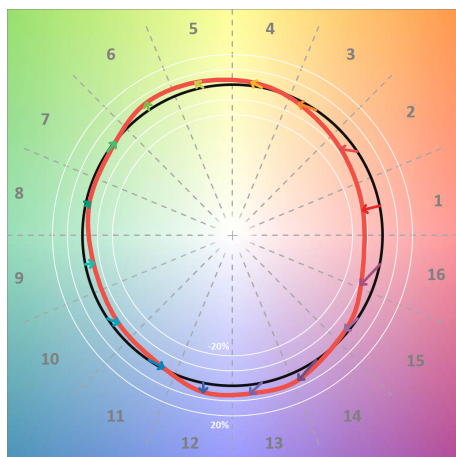
Colour Quality Scale CQS = 81.6
 Television Lighting Consistency Index TLCI = 65



Relative spectral power distribution



TM30 details

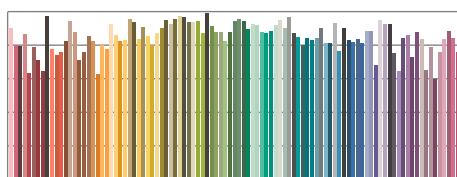


TM30 Colour vectors per hue bin

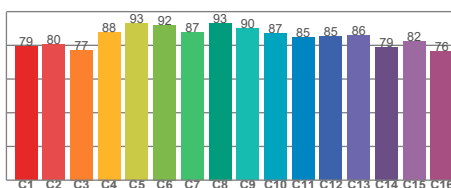


TM30 Colour distortion

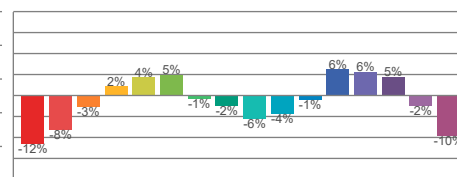
Hue Bin	R_f	Shifts (%)	
		Chroma	Hue
C1	79	-12%	0%
C2	80	-8%	8%
C3	77	-3%	12%
C4	88	2%	7%
C5	93	4%	4%
C6	92	5%	-1%
C7	87	-1%	-8%
C8	93	-2%	-3%
C9	90	-6%	0%
C10	87	-4%	7%
C11	85	-1%	11%
C12	85	6%	1%
C13	86	6%	-9%
C14	79	5%	-17%
C15	82	-2%	-11%
C16	76	-10%	-16%



TM30-18 R_f -values per reference colour

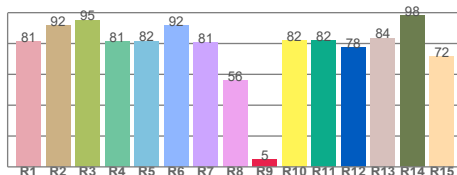


TM30-18 R_f -values per hue bin

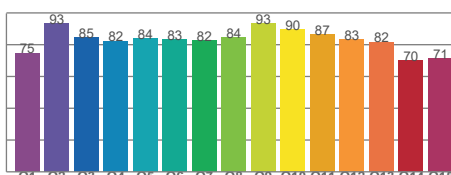


TM30 Chroma shift

Colour Quality details



Colour Rendering Index



Colour Quality Scale