

136-025 5W 3000K specific configuration  
Ceiling light | Ø180mm | 5/7 Watt | 2700K/3000K/4000K

## Introduction

### Purpose of this Document

This document provides information for 136-025 5W 3000K. During measurement, the product is used in a different mode where output power, colour temperature and/or beam angle are changed from factory standard. These adjustments can be made without altering the product and are designed to be set by the installer. In most cases, the options are set through switches on the product.

### Results

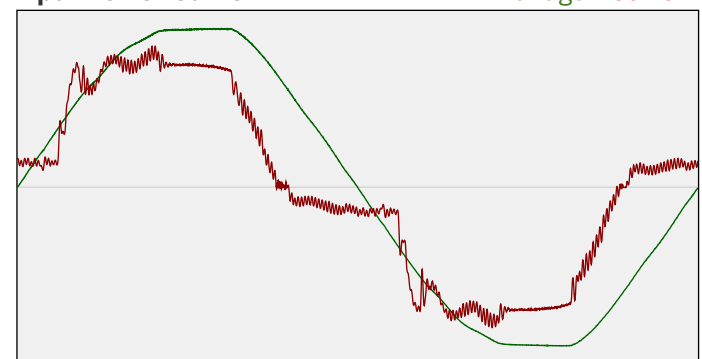
Total input power	4.7 W
Correlated Colour Temperature	3148 K
Total lumen output	510 lm
Efficiency	109 lm/W

## Electrical measurement details

### Input Power

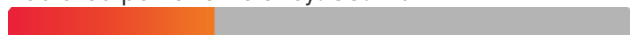
RMS Input voltage feed. $V_{RMS}$	230 V
RMS Input current feed. $I_{RMS}$	0.023 A
Total input power	4.7 W
Frequency of input power	50 Hz
Power factor	0.9
Displacement power factor	0.93
Total harmonic distortion of the current	26.27%
Total harmonic distortion of the voltage	2.86%

### Input Power Curve



### Efficiency

Radiated power efficiency: 33.4%



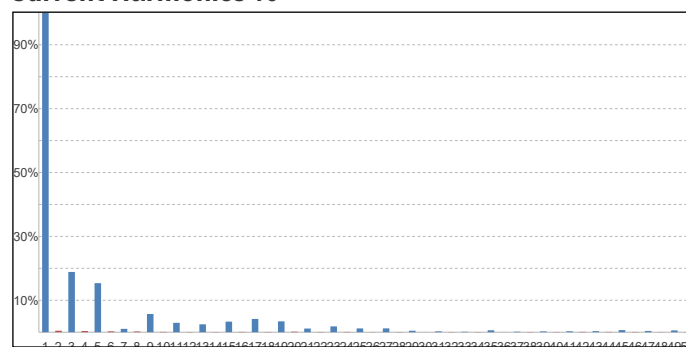
Lumen efficiency: 109 lm/W



### Harmonics

3rd Harmonic	18.87%
5th Harmonic	15.36%
7th Harmonic	1.05%
9th Harmonic	5.7%
11th Harmonic	2.94%

### Current Harmonics %



## 136-025 5W 3000K specific configuration

### Colour measurement details

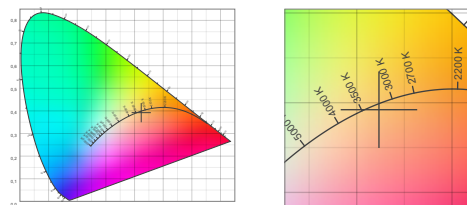
Total lumen output 510 lm  
 Correlated Colour Temperature 3148 K  
 Colour coordinates CIE 1931 (x;y) = (0.423;0.392)  
 Colour deviation from BBL Duv = -0.0028

TM30-18 Colour Fidelity Index  $R_f$  85.7  
 TM30-18 Colour Gamut Index  $R_g$  97.3  
 Colour Rendering Index (Ra) CRI 85.1  
 Colour Rendering Index. (red component)  $R_9$  = 16.0

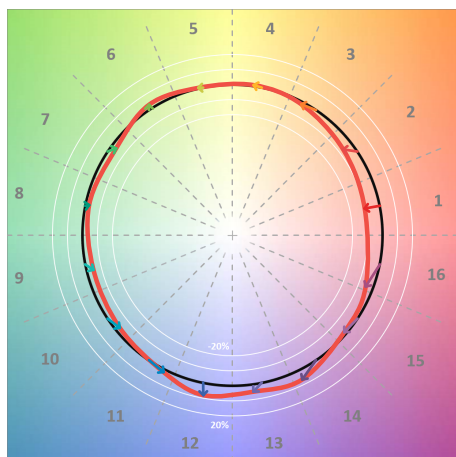
Colour Quality Scale CQS = 83.3  
 Television Lighting Consistency Index TLCI = 72



Relative spectral power distribution



### TM30 details

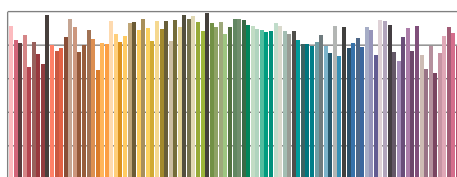


TM30 Colour vectors per hue bin

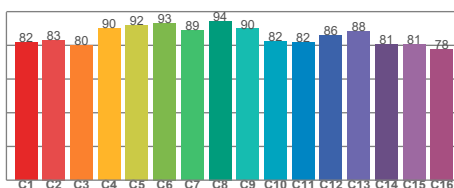


TM30 Colour distortion

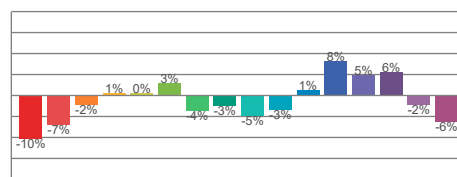
Hue Bin	$R_f$	Shifts (%)	
		Chroma	Hue
C1	82	-10%	0%
C2	83	-7%	6%
C3	80	-2%	10%
C4	90	1%	6%
C5	92	0%	3%
C6	93	3%	-2%
C7	89	-4%	-5%
C8	94	-3%	-1%
C9	90	-5%	5%
C10	82	-3%	10%
C11	82	1%	12%
C12	86	8%	2%
C13	88	5%	-7%
C14	81	6%	-15%
C15	81	-2%	-12%
C16	78	-6%	-16%



TM30-18  $R_f$ -values per reference colour

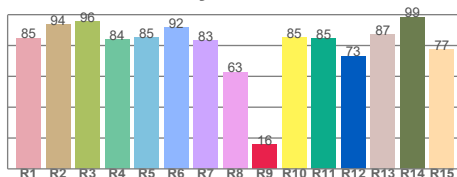


TM30-18  $R_f$ -values per hue bin

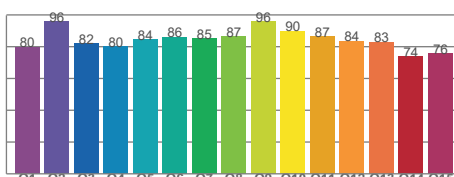


TM30 Chroma shift

### Colour Quality details



Colour Rendering Index



Colour Quality Scale