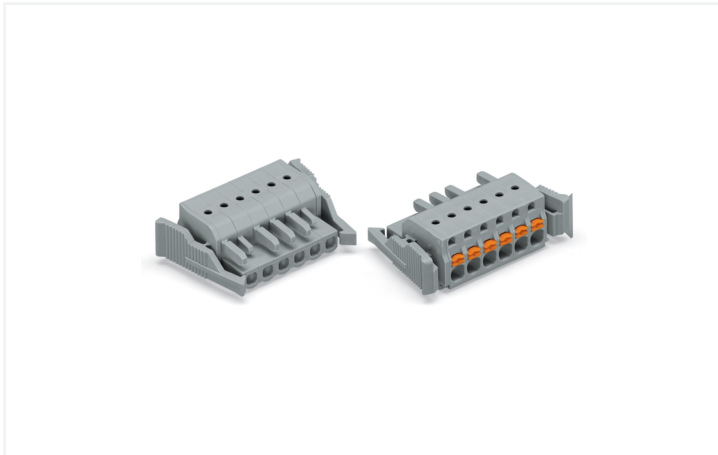


## Data Sheet | Item Number: 2231-105/037-000/134-000

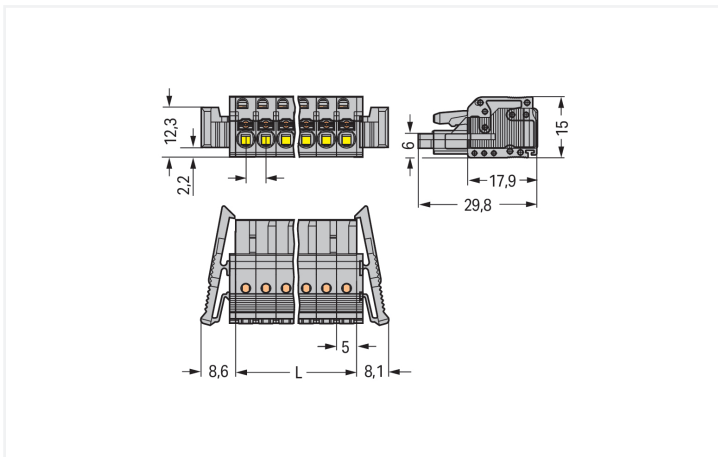
1-conductor female connector; push-button; Push-in CAGE CLAMP®; 2.5 mm<sup>2</sup>; Pin spacing 5 mm; 5-pole; Lateral locking levers; Strain relief plate; 2,50 mm<sup>2</sup>; gray

<https://www.wago.com/2231-105/037-000/134-000>



Color: ■ gray

Similar to illustration



Dimensions in mm

L = pole no. x pin spacing 2- to 3-pole female connectors – one latch only

### Female connector, 2231 Series, Push-in CAGE CLAMP®

Seamless electrical installations are guaranteed with this female connector (item number 2231-105/037-000/134-000). Conductors can only be connected to this female connector if their strip length is between 10 and 11 mm. Featuring one conductor terminal along with Push-in CAGE CLAMP®, this connector is highly versatile. Push-in CAGE CLAMP® connection technology is ideal for connecting all conductor types. It allows direct insertion of both solid and fine-stranded conductors with ferrules without the need for tools—all thanks to its pluggable design. The dimensions are (41.7 x 15 x 54.8) mm (width x height x depth). This female connector is suitable for conductor cross sections ranging from 0.2 mm<sup>2</sup> to 2.5 mm<sup>2</sup>.

The contact surface is coated with tin. The strain relief plate is a safety precaution for connected conductors that also makes cables easier to handle..

**Notes**

|  |   |
|--|---|
| <p>Safety Information</p> <p>Variants:</p> | <p>The MCS – MULTI CONNECTION SYSTEM includes connectors without breaking capacity in accordance with DIN EN 61984. When used as intended, these connectors must not be connected/disconnected when live or under load. When used as intended, these connectors must not be connected/disconnected when live or under load. The circuit design should ensure header pins, which can be touched, are not live when unmated.</p> <p>Gold-plated or partially gold-plated contact surfaces<br/>Other versions (or variants) can be requested from WAGO Sales or configured at <a href="https://configurator.wago.com/">https://configurator.wago.com/</a>.</p> |
|--|---|

**Electrical data**

| Ratings per                     | IEC/EN 60664-1 |       |       | Approvals per | UL 1059 |       |       |
|---------------------------------|----------------|-------|-------|---------------|---------|-------|-------|
| Overvoltage category            | III            | III   | II    | Use group     | B       | C     | D     |
| Pollution degree                | 3              | 2     | 2     | Rated voltage | 300 V   | 150 V | 300 V |
| Nominal voltage                 | 320 V          | 320 V | 630 V | Rated current | 15 A    | 15 A  | 10 A  |
| Rated impulse withstand voltage | 4 kV           | 4 kV  | 4 kV  |               |         |       |       |
| Rated current                   | 16 A           | 16 A  | 16 A  |               |         |       |       |

| Approvals per | UL 1977 |
|---------------|---------|
| Rated voltage | 600 V   |
| Rated current | 15 A    |

| Approvals per | CSA   |       |       |
|---------------|-------|-------|-------|
| Use group     | B     | C     | D     |
| Rated voltage | 300 V | 150 V | 300 V |
| Rated current | 15 A  | 15 A  | 10 A  |

**Connection Data**

|   |   |   |                            |   |                            |   |                  |   |   |                       |                     |                |             |                       |                                       |                 |   |                         |   |   |                              |   |                              |              |                                     |             |   |   |    |
|---|---|---|----------------------------|---|----------------------------|---|------------------|---|---|-----------------------|---------------------|----------------|-------------|-----------------------|---------------------------------------|-----------------|---|-------------------------|---|---|------------------------------|---|------------------------------|--------------|-------------------------------------|-------------|---|---|----|
| <table border="0"> <tr> <td>Clamping units</td> <td>5</td> </tr> <tr> <td>Total number of potentials</td> <td>5</td> </tr> <tr> <td>Number of connection types</td> <td>1</td> </tr> <tr> <td>Number of levels</td> <td>1</td> </tr> </table> | Clamping units                              | 5 | Total number of potentials | 5 | Number of connection types | 1 | Number of levels | 1 | <p><b>Connection 1</b></p> <table border="0"> <tr> <td>Connection technology</td> <td>Push-in CAGE CLAMP®</td> </tr> <tr> <td>Actuation type</td> <td>Push-button</td> </tr> <tr> <td>Actuation direction 1</td> <td>Operation parallel to conductor entry</td> </tr> <tr> <td>Solid conductor</td> <td>0.2 ... 2.5 mm<sup>2</sup> / 24 ... 12 AWG</td> </tr> <tr> <td>Fine-stranded conductor</td> <td>0.2 ... 2.5 mm<sup>2</sup> / 24 ... 12 AWG</td> </tr> <tr> <td>Fine-stranded conductor; with insulated ferrule</td> <td>0.25 ... 1.5 mm<sup>2</sup></td> </tr> <tr> <td>Fine-stranded conductor; with uninsulated ferrule</td> <td>0.25 ... 2.5 mm<sup>2</sup></td> </tr> <tr> <td>Strip length</td> <td>10 ... 11 mm / 0.39 ... 0.43 inches</td> </tr> <tr> <td>Pole number</td> <td>5</td> </tr> <tr> <td>Conductor entry direction to mating direction</td> <td>0°</td> </tr> </table> | Connection technology | Push-in CAGE CLAMP® | Actuation type | Push-button | Actuation direction 1 | Operation parallel to conductor entry | Solid conductor | 0.2 ... 2.5 mm <sup>2</sup> / 24 ... 12 AWG | Fine-stranded conductor | 0.2 ... 2.5 mm <sup>2</sup> / 24 ... 12 AWG | Fine-stranded conductor; with insulated ferrule | 0.25 ... 1.5 mm <sup>2</sup> | Fine-stranded conductor; with uninsulated ferrule | 0.25 ... 2.5 mm <sup>2</sup> | Strip length | 10 ... 11 mm / 0.39 ... 0.43 inches | Pole number | 5 | Conductor entry direction to mating direction | 0° |
| Clamping units  | 5   |   |                            |   |                            |   |                  |   |   |                       |                     |                |             |                       |                                       |                 |   |                         |   |   |                              |   |                              |              |                                     |             |   |   |    |
| Total number of potentials  | 5   |   |                            |   |                            |   |                  |   |   |                       |                     |                |             |                       |                                       |                 |   |                         |   |   |                              |   |                              |              |                                     |             |   |   |    |
| Number of connection types  | 1   |   |                            |   |                            |   |                  |   |   |                       |                     |                |             |                       |                                       |                 |   |                         |   |   |                              |   |                              |              |                                     |             |   |   |    |
| Number of levels  | 1   |   |                            |   |                            |   |                  |   |   |                       |                     |                |             |                       |                                       |                 |   |                         |   |   |                              |   |                              |              |                                     |             |   |   |    |
| Connection technology   | Push-in CAGE CLAMP®                         |   |                            |   |                            |   |                  |   |   |                       |                     |                |             |                       |                                       |                 |   |                         |   |   |                              |   |                              |              |                                     |             |   |   |    |
| Actuation type  | Push-button                                 |   |                            |   |                            |   |                  |   |   |                       |                     |                |             |                       |                                       |                 |   |                         |   |   |                              |   |                              |              |                                     |             |   |   |    |
| Actuation direction 1   | Operation parallel to conductor entry       |   |                            |   |                            |   |                  |   |   |                       |                     |                |             |                       |                                       |                 |   |                         |   |   |                              |   |                              |              |                                     |             |   |   |    |
| Solid conductor   | 0.2 ... 2.5 mm <sup>2</sup> / 24 ... 12 AWG |   |                            |   |                            |   |                  |   |   |                       |                     |                |             |                       |                                       |                 |   |                         |   |   |                              |   |                              |              |                                     |             |   |   |    |
| Fine-stranded conductor   | 0.2 ... 2.5 mm <sup>2</sup> / 24 ... 12 AWG |   |                            |   |                            |   |                  |   |   |                       |                     |                |             |                       |                                       |                 |   |                         |   |   |                              |   |                              |              |                                     |             |   |   |    |
| Fine-stranded conductor; with insulated ferrule   | 0.25 ... 1.5 mm <sup>2</sup>                |   |                            |   |                            |   |                  |   |   |                       |                     |                |             |                       |                                       |                 |   |                         |   |   |                              |   |                              |              |                                     |             |   |   |    |
| Fine-stranded conductor; with uninsulated ferrule   | 0.25 ... 2.5 mm <sup>2</sup>                |   |                            |   |                            |   |                  |   |   |                       |                     |                |             |                       |                                       |                 |   |                         |   |   |                              |   |                              |              |                                     |             |   |   |    |
| Strip length  | 10 ... 11 mm / 0.39 ... 0.43 inches         |   |                            |   |                            |   |                  |   |   |                       |                     |                |             |                       |                                       |                 |   |                         |   |   |                              |   |                              |              |                                     |             |   |   |    |
| Pole number   | 5   |   |                            |   |                            |   |                  |   |   |                       |                     |                |             |                       |                                       |                 |   |                         |   |   |                              |   |                              |              |                                     |             |   |   |    |
| Conductor entry direction to mating direction   | 0°  |   |                            |   |                            |   |                  |   |   |                       |                     |                |             |                       |                                       |                 |   |                         |   |   |                              |   |                              |              |                                     |             |   |   |    |

**Physical data**

|             |                        |
|-------------|------------------------|
| Pin spacing | 5 mm / 0.197 inches    |
| Width       | 41.7 mm / 1.642 inches |
| Height      | 15 mm / 0.591 inches   |
| Depth       | 54.8 mm / 2.157 inches |

### Mechanical data

|                          |     |
|--------------------------|-----|
| Variable coding          | Yes |
| Anti-rotation protection | Yes |

### Plug-in connection

|                                    |                         |
|------------------------------------|-------------------------|
| Contact type (pluggable connector) | Female connector/socket |
| Connector (connection type)        | for conductor           |
| Mismatching protection             | No                      |
| Locking of plug-in connection      | Locking lever           |
| Strain relief                      | Strain relief plate     |

### Material data

|                                    |  |
|------------------------------------|--|
| Note (material data)               | <a href="#">Information on material specifications can be found here</a> |
| Color                              | gray   |
| Material group                     | I  |
| Insulation material (main housing) | Polyamide (PA66)   |
| Flammability class per UL94        | V0   |
| Clamping spring material           | Chrome-nickel spring steel (CrNi)  |
| Contact material                   | Copper alloy   |
| Contact Plating                    | Tin  |
| Fire load                          | 0.224 MJ   |
| Weight                             | 10.1 g   |

### Environmental requirements

|                         |                 |
|-------------------------|-----------------|
| Limit temperature range | -60 ... +100 °C |
| Processing temperature  | -35 ... +60 °C  |

### Commercial data

|                       |               |
|-----------------------|---------------|
| PU (SPU)              | 50 pcs        |
| Packaging type        | Box           |
| Country of origin     | PL            |
| GTIN                  | 4050821349952 |
| Customs tariff number | 85366990990   |

### Product Classification

|             |                      |
|-------------|----------------------|
| UNSPSC      | 39121409             |
| eCl@ss 10.0 | 27-44-03-09          |
| eCl@ss 9.0  | 27-44-03-09          |
| ETIM 9.0    | EC002638             |
| ETIM 10.0   | EC002638             |
| ECCN        | NO US CLASSIFICATION |

| Environmental Product Compliance |                         |
|----------------------------------|-------------------------|
| RoHS Compliance Status           | Compliant, No Exemption |

## Approvals / Certificates

### General approvals



| Approval                             | Standard      | Certificate Name |
|--------------------------------------|---------------|------------------|
| CSA<br>CSA Group                     | C22.2 No. 158 | 2314554          |
| UL<br>Underwriters Laboratories Inc. | UL 1977       | E45171           |

## Downloads

### Environmental Product Compliance

| Compliance Search |
|-------------------|
| <a href="#">↓</a> |

## Documentation

| Additional Information |            |                   |                   |
|------------------------|------------|-------------------|-------------------|
| Technical Section      | 03.04.2019 | pdf<br>2027.26 KB | <a href="#">↓</a> |

## 1 Compatible Products

### 1.1 System counterpart

#### 1.1.1 Male connector/plug



**Item No.: 231-605**  
1-conductor male connector; CAGE CLAMP®; 2.5 mm<sup>2</sup>; Pin spacing 5 mm; 5-pole; gray

**Item No.: 231-435/001-000**  
THT male header; 1.0 x 1.0 mm solder pin; angled; Pin spacing 5 mm; 5-pole; gray

**Item No.: 231-135/001-000**  
THT male header; 1.0 x 1.0 mm solder pin; straight; Pin spacing 5 mm; 5-pole; gray

## 1.2 Optional Accessories

### 1.2.1 Ferrule

#### 1.2.1.1 Ferrule



**Item No.: 216-241**

Ferrule; Sleeve for 0.5 mm<sup>2</sup> / 20 AWG; insulated; electro-tin plated; electrolytic copper; gastight crimped; acc. to DIN 46228, Part 4/09.90; white



**Item No.: 216-141**

Ferrule; Sleeve for 0.5 mm<sup>2</sup> / 20 AWG; un-insulated; electro-tin plated; electrolytic copper; gastight crimped; acc. to DIN 46228, Part 1/08.92



**Item No.: 216-242**

Ferrule; Sleeve for 0.75 mm<sup>2</sup> / 18 AWG; insulated; electro-tin plated; electrolytic copper; gastight crimped; acc. to DIN 46228, Part 4/09.90; gray



**Item No.: 216-262**

Ferrule; Sleeve for 0.75 mm<sup>2</sup> / 18 AWG; un-insulated; electro-tin plated; electrolytic copper; gastight crimped; acc. to DIN 46228, Part 4/09.90; gray



**Item No.: 216-142**

Ferrule; Sleeve for 0.75 mm<sup>2</sup> / 18 AWG; un-insulated; electro-tin plated; electrolytic copper; gastight crimped; acc. to DIN 46228, Part 1/08.92



**Item No.: 216-243**

Ferrule; Sleeve for 1 mm<sup>2</sup> / AWG 18; insulated; electro-tin plated; electrolytic copper; gastight crimped; acc. to DIN 46228, Part 4/09.90; red



**Item No.: 216-263**

Ferrule; Sleeve for 1 mm<sup>2</sup> / AWG 18; un-insulated; electro-tin plated; electrolytic copper; gastight crimped; acc. to DIN 46228, Part 4/09.90; red



**Item No.: 216-143**

Ferrule; Sleeve for 1 mm<sup>2</sup> / AWG 18; un-insulated; electro-tin plated; electrolytic copper; gastight crimped; acc. to DIN 46228, Part 1/08.92



**Item No.: 216-244**

Ferrule; Sleeve for 1.5 mm<sup>2</sup> / AWG 16; insulated; electro-tin plated; electrolytic copper; gastight crimped; acc. to DIN 46228, Part 4/09.90; black



**Item No.: 216-264**

Ferrule; Sleeve for 1.5 mm<sup>2</sup> / AWG 16; un-insulated; electro-tin plated; electrolytic copper; gastight crimped; acc. to DIN 46228, Part 4/09.90; black



**Item No.: 216-284**

Ferrule; Sleeve for 1.5 mm<sup>2</sup> / AWG 16; un-insulated; electro-tin plated; electrolytic copper; gastight crimped; acc. to DIN 46228, Part 4/09.90; black



**Item No.: 216-144**

Ferrule; Sleeve for 1.5 mm<sup>2</sup> / AWG 16; un-insulated; electro-tin plated; electrolytic copper; gastight crimped; acc. to DIN 46228, Part 1/08.92; silver-colored



**Item No.: 216-106**

Ferrule; Sleeve for 2.5 mm<sup>2</sup> / AWG 14; un-insulated; electro-tin plated; silver-colored

### 1.2.2 Insulation stop

#### 1.2.2.1 Insulation stop



**Item No.: 231-671**

Insulation stop; 0.25 - 0.5 mm<sup>2</sup>; light gray



**Item No.: 231-672**

Insulation stop; 0.75 - 1 mm<sup>2</sup>; dark gray

### 1.2.3 Marking

#### 1.2.3.1 Marking strip



**Item No.: 210-332/500-202**

Marking strips; as a DIN A4 sheet; MARKED; 1-16 (160x); Height of marker strip: 3 mm; Strip length 182 mm; Horizontal marking; Self-adhesive; white



**Item No.: 210-332/500-205**

Marking strips; as a DIN A4 sheet; MARKED; 1-32 (80x); Height of marker strip: 3 mm; Strip length 182 mm; Horizontal marking; Self-adhesive; white



**Item No.: 210-332/500-204**

Marking strips; as a DIN A4 sheet; MARKED; 17-32 (160x); Height of marker strip: 3 mm; Strip length 182 mm; Horizontal marking; Self-adhesive; white



**Item No.: 210-332/500-206**

Marking strips; as a DIN A4 sheet; MARKED; 33-48 (160x); Height of marker strip: 3 mm; Strip length 182 mm; Horizontal marking; Self-adhesive; white

## 1.2.4 Strain relief

### 1.2.4.1 Strain relief plate

**Item No.: 734-329**

Strain relief plate; for female and male connectors; 25 mm wide; 1 part; gray

## 1.2.5 Test and measurement

### 1.2.5.1 Testing accessories



**Item No.: 210-136**

Test plug; 2 mm Ø; with 500 mm cable; red



**Item No.: 231-661**

Test plugs for female connectors; for 5 mm and 5.08 mm pin spacing; 2,50 mm<sup>2</sup>; light gray

## 1.2.6 Tool

### 1.2.6.1 Operating tool



**Item No.: 210-720**

Operating tool; Blade: 3.5 x 0.5 mm; with a partially insulated shaft; multicoloured

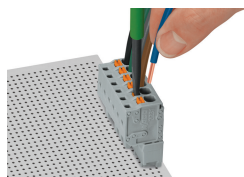


**Item No.: 210-657**

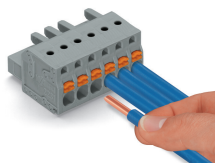
Operating tool; Blade: 3.5 x 0.5 mm; with a partially insulated shaft; short; multicoloured

## Installation Notes

### Conductor termination

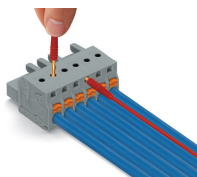


Inserting fine-stranded conductors into Push-in CAGE CLAMP® unit via push-buttons.



Push-in termination of solid conductors or fine-stranded conductors with ferrule

## Testing



Testing parallel to conductor entry via integrated test ports – female connector with push-buttons and Push-in CAGE CLAMP® connection – touch contact perpendicular to conductor entry.

## Installation



Male connector with strain relief plate

Strain relief housing shown with a male connector equipped with CAGE CLAMP®

## Marking



Labeling via direct marking or self-adhesive strips.