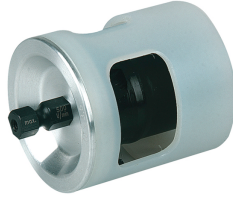


## KS63: Kalispeed for electric drills (max. 500 rpm, clockwise only) Ø63



### Commercial information

Steel calibration tool for battery-powered drill (max. 500 revolutions/minute). Turn clockwise for sharp blade. Beware of overheating!

#### Basic unit dimensions

Height	75 mm
Length	70 mm
Width	75 mm
Net weight	0.926 kg

#### Certificates

#### Applications

Potable water, Heating, Cooling, Compressed air, Sprinkler, Sanitary

#### Solutions

Building installations, Industry, Fire protection, Utility, Shipbuilding

Technical characteristics

Model	Pipe deburrer	Cutting diameter	63 63 Millimetre
Suitable for plastic	✓	Length	70 Millimetre
Suitable for steel	✗	Cutting edge length	63 Millimetre
Suitable for stainless steel	✗		
Suitable for aluminium	✗		
Suitable for copper	✗		
Suitable for brass	✗		