

VisionGuard

Enhanced Visibility, Enhanced Safety:
Smart Visualisation for Emergency Lighting Systems



Powering Business Worldwide

Content

VisionGuard product description – The main features of VisionGuard	3
VisionGuard – a modern client-server architecture with optional BACnet/IP based BMS interface	4
The benefits of using VisionGuard	5
A single software for a wide range of tasks	5
VisionGuard overview	6
VisionGuard application examples	7
Insights into the software	8
A convincing technology	11
Log book with filter function	14
Monitoring software	15

VisionGuard – a powerful visualisation software with a new design

VisionGuard software makes it easier to identify when and where emergency lighting system problems occur across large, complex settings and multiple sites.

As the successor to our successful CGVision software it combines proven Eaton visualisation technology with secure, web-based client-server architecture to enable the complete visualisation, control, and configuration of DualGuard-S (DG-S), LoadStar-S (LS-S), ZB-S, LP-STAR and of CGLine+ Web-/Compact-Controller and monitoring and control of AT-S+ systems.¹ Configuration of the systems via the visualisation eliminates the need for a time-consuming on-site visit to the system.

The intelligent and user-friendly VisionGuard visualisation software offers maximum reliability, even when it comes to controlling and monitoring large emergency lighting systems. Up to 500 individual DG-S/LS-S, ZB-S, LP-STAR, AT-S+ and CGLine+ emergency lighting systems with more than 100,000 light points can be monitored via a single control room monitor. Especially for larger buildings such as airports, universities, museums, sports and industrial facilities, this software is the ideal choice to ensure the optimized and cost-effective operation of emergency lighting systems. A modern project navigation provides a clear and concise orientation for such large projects. An optional building layout visualisation enables a convenient view of system status and luminaires as graphical coloured data points in a building layout. The colours of the data points enable immediate recognition of the status. Tooltips (pop-up windows) display further information (e.g. luminaire name) on the data points. VisionGuard is also a powerful tool for small projects thanks to the user-friendly display of all status information, the extensive notification functions and the mobile application for tablets or smartphones.

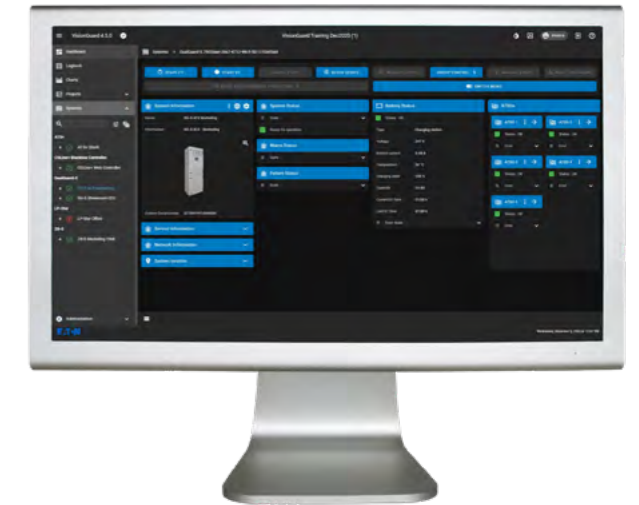
Web-based client/server structure

VisionGuard is a modern web-based visualisation software that relies on a streamlined and clutter-free design. During the development of VisionGuard, we focused on the essentials, namely to offer a design that's highly user-friendly, and ensures that users are much more likely to accurately process information.

Versatile display

The responsive web design, which automatically adjusts to the display settings of the device in question, allows unrestricted use of the software across different display sizes and resolutions, on any

1. For CG-S devices (ZB-S, LP-STAR and AT-S+) on VisionGuard, an optional CG-S license is required, which is available as USB dongle or softlicense.



design smartphone or tablet. As a result, users don't have to commit to any particular display sizes or manufacturers.

Highly user-friendly

The VisionGuard display function (web client) supports all common web browsers, such as Chrome, Edge, Firefox, Safari, etc. The software can therefore be used with Windows, iOS, Android or Linux operating systems.

There is no need for a dedicated special client software or even an IT specialist to maintain or support the client system.

Fast and reliable

The web-based design delivers maximum performance at high speed, including improved and optimized loading speeds. Contrary to other solutions that leave users waiting impatiently, the software comes with an integrated progress bar that indicates the remaining time for each type of action.

Secure and failsafe

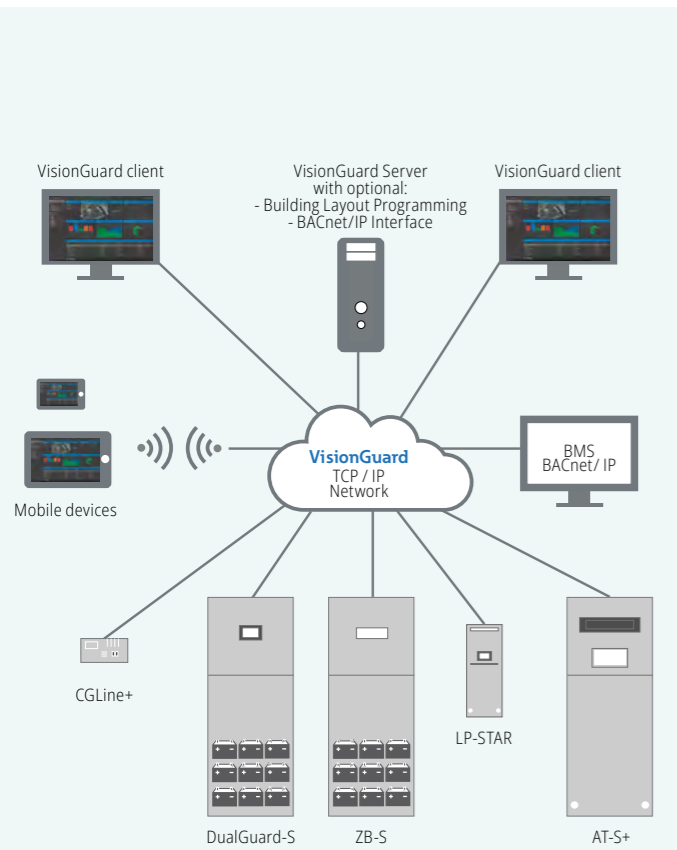
Based on a sophisticated user account control (UAC) with four user roles, designed with different access permissions according to the latest cyber security guidelines, such as the use of strong passwords, the system offers the most advanced security mechanisms a software can bring. The high security standard was verified during development by an EATON Cyber Security Center of Excellence test lab. The operation of the software via independent services in the background for individual software applications, such as database, e-mail service, etc. guarantees a very high level of reliability. An integrated Back Up and Restore function allows an extremely fast and easy recovery in case the PC hardware fails, or for moving to another system environment.²

2. Designed for all current Windows environments based on Windows11 or Windows Server 2019/2022/2025, the software covers all common application types, from dedicated PC workstations to virtualized environments with remote access.

An Eaton secure-by-design solution



Complies with rigorous cybersecurity, process, requirements and testing standards



VisionGuard – a modern client-server architecture with optional BACnet/IP based BMS interface

VisionGuard's modern web-based client-server architecture meets all the requirements of today's Windows-based IT environments. This web-based client-server design is compatible with any of the browsers that are currently in use for PC workstations. This eliminates the need for any special proprietary client software, which would have to be installed separately and with special administrator rights. This saves time and the involvement of an IT specialist.

What's more, the responsive web design, which can be used with any standard browser, enables the use of mobile devices such as tablets or smartphones, running on any operating system (e.g. Android, iOS).

An optionally available BACnet/IP interface allows the connection of an external Building Management System (BMS) via the BACnet protocol. The BACnet/IP interface provides a range of status information for each individual emergency lighting system (individually activatable per system) in the form of BACnet objects.

The BACnet/IP Interface for CGLine+ Web-Controller / Compact-Controller provides Status information of the Controller and summary luminaire status of each line.

VisionGuard – a modern design

- Modern web based client/server architecture
- Intuitive design that provides a quick overview and is easy to use
- Customizable login page (background image) and landing page
- Clear and innovative presentation of system information by means of widgets (graphic window system)
- An advanced project navigation offers a clear orientation even for large projects
- An optional building layout visualisation enables a convenient view of system status and luminaires as graphical coloured data points in a building layout.
- Responsive web design for different display sizes and resolutions for use with mobile devices such as tablets or smartphones
- The web-based design enables the use of VisionGuard clients with any operating system, such as Windows, Mac OS, iOS, Android or Linux
- Easy switching between the popular dark or light mode



The benefits of using VisionGuard

- Multi-user operation: A web-based client/server architecture that can be accessed independently and in parallel from different workstations
- Use of standard web browser on the client PC, no special client software installation necessary
- Dongle-free software licensing
- Tiered versions, from 3 to 500 DualGuard-S (DG-S) / LoadStar-S (LS-S), ZB-S, LP-STAR, AT-S+ or CGLine+ emergency lighting systems
- Excellent clarity through advanced project navigation with freely configurable navigation levels
- Optional: A building layout visualisation enables a convenient view of system status and luminaires as graphical coloured data points in a building layout. The colours of the data points enable immediate recognition of the status. Tooltips (pop-up windows) display further information (e.g. luminaire name) on the data points.
- State-of-the-art, web-based dashboard design with widgets (graphic window system)
- Responsive web-based design for different display sizes
- Optimized for Full HD (1920 x 1080 dpi)
- Full visualisation, control and configuration of DG-S / LS-S, ZB-S, LP-STAR and CGLine+ emergency lighting systems down to the level of each system/luminaire
- Full visualisation and control of AT-S+ systems
- User access control with four user roles (supervisor, administrator, power user and user)
- Detailed e-mail functions
- Advanced printing functions
- Backup & Restore menu, for quick and easy recovery in case of hardware failure
- Cyber security tested (EATON)
- Optional BACnet/IP interface for all emergency lighting systems (individually per system activatable). This allows an easy connection of an external building management system (BMS) via the BACnet protocol
- Graphical representations of battery analog values in the charts menu offer a clear representation in the form of diagrams over time
- Occurring faults can be conveniently forwarded to external applications via an integrated statistic export function
- Battery block monitoring: graphic display of the optionally available individual battery block monitoring with single battery block voltage and single battery block temperature (only for DG-S / LS-S)



VisionGuard - A single software for a wide range of tasks

The powerful VisionGuard visualisation software is able to control and monitor even large emergency lighting systems with maximum reliability. Eaton has more than 40 years of experience in this field. As market leader, we are always aware of our special responsibility, because in our sector, light means life!

Easy monitoring for the really big tasks

Monitor up to 500 individual emergency lighting systems with over 100,000 light points with a single control room monitor using VisionGuard.

Especially for larger buildings such as airports, universities, museums, sports and industrial facilities, this software is the ideal choice to ensure the optimized and cost-effective operation of the entire emergency lighting system. A modern project navigation offers a clear orientation even for large projects.

An optional building layout visualisation enables a convenient view of system status and luminaires as graphical coloured data points in a building layout.

The strengths of the Eaton software are its complexity and configurability. It can manage entire emergency lighting

systems with unprecedented transparency and efficiency. Compared to VisionGuard, web server solutions offer only a fraction of the performance.

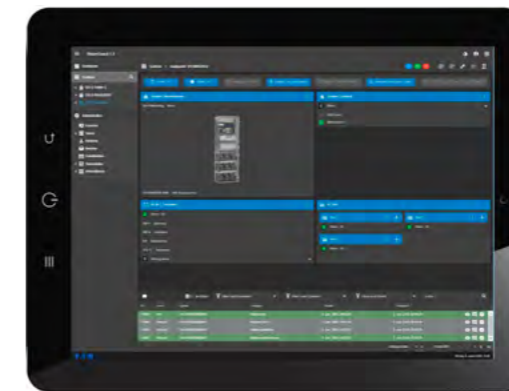
Every safety luminaire counts

The only thing that matters in an emergency is that the system offers 100 percent protection. Building operators also need to document that this is really the case. VisionGuard records all the relevant details in an electronic log book, with status information that can be printed out automatically and at pre-defined intervals. Control in its most economical form.

Current status reports can be easily generated as .pdf documents and downloaded to the client. The status reports contain all relevant information for an effective troubleshooting.

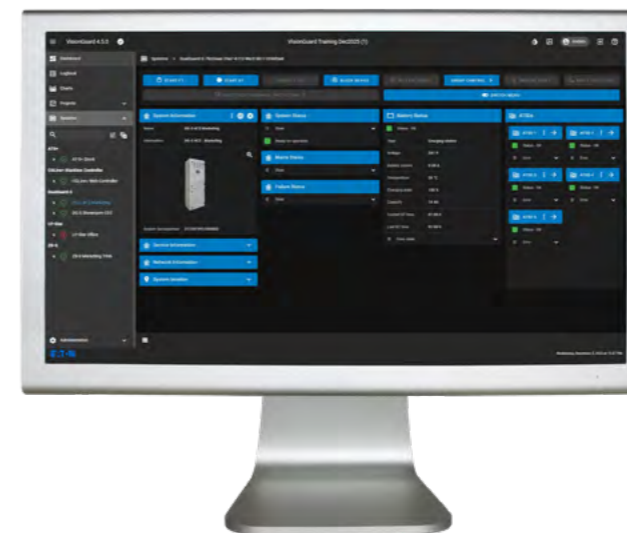
Responsive web design

The responsive web design automatically adjusts to the display size/resolution, to make sure that the display is ideally matched to the screen size of any smartphone. Even the navigation menu automatically adjusts to the screen size.



Tablets

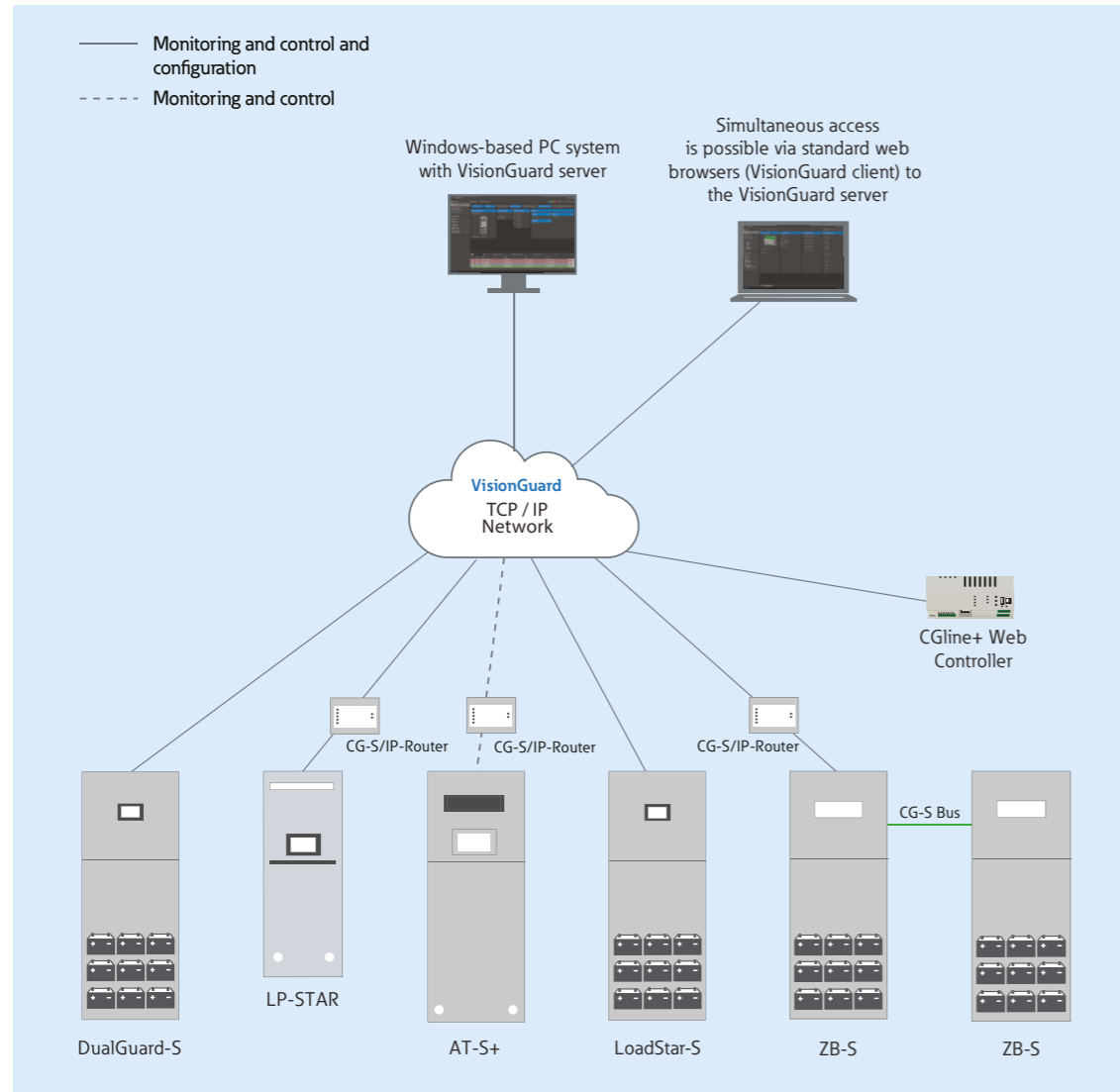
Tablets offer a larger screen than smartphones while still being easy to handle, which makes them ideal for mobile applications. They offer the perfect balance between size and portability.



Full HD

The VisionGuard interface is optimized for a resolution of 1920x1080, which corresponds to Full HD. This means crystal-clear images even on larger screens.

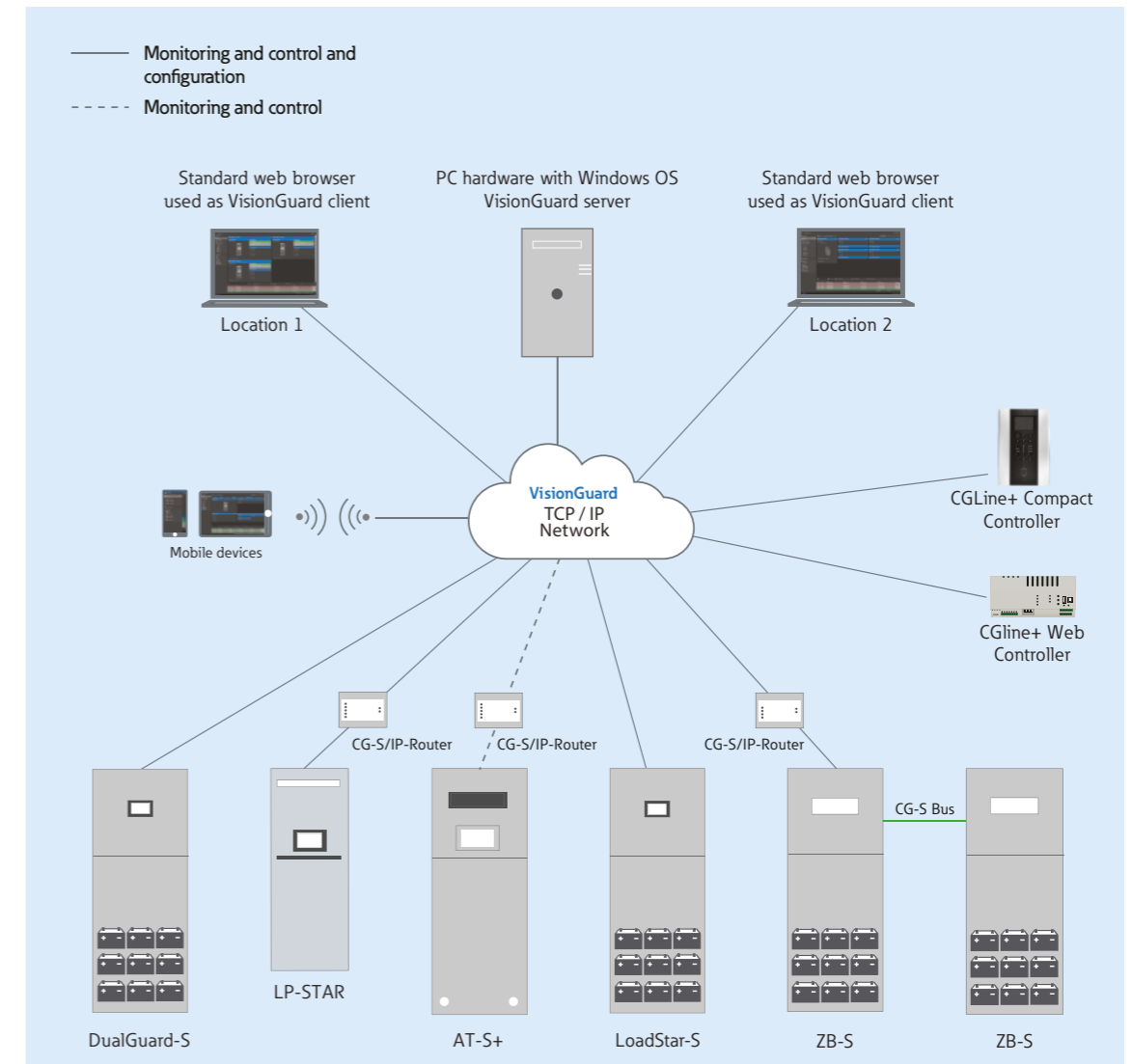
Application example: VisionGuard used as a workstation



The VisionGuard server software can be installed on any Windows-based PC system. VisionGuard can be accessed via any locally installed web browser. So the use of any OS such as Windows, Linux, iOS or Android as client possible. The system can also be easily accessed remotely via a web browser from any PC within the network.

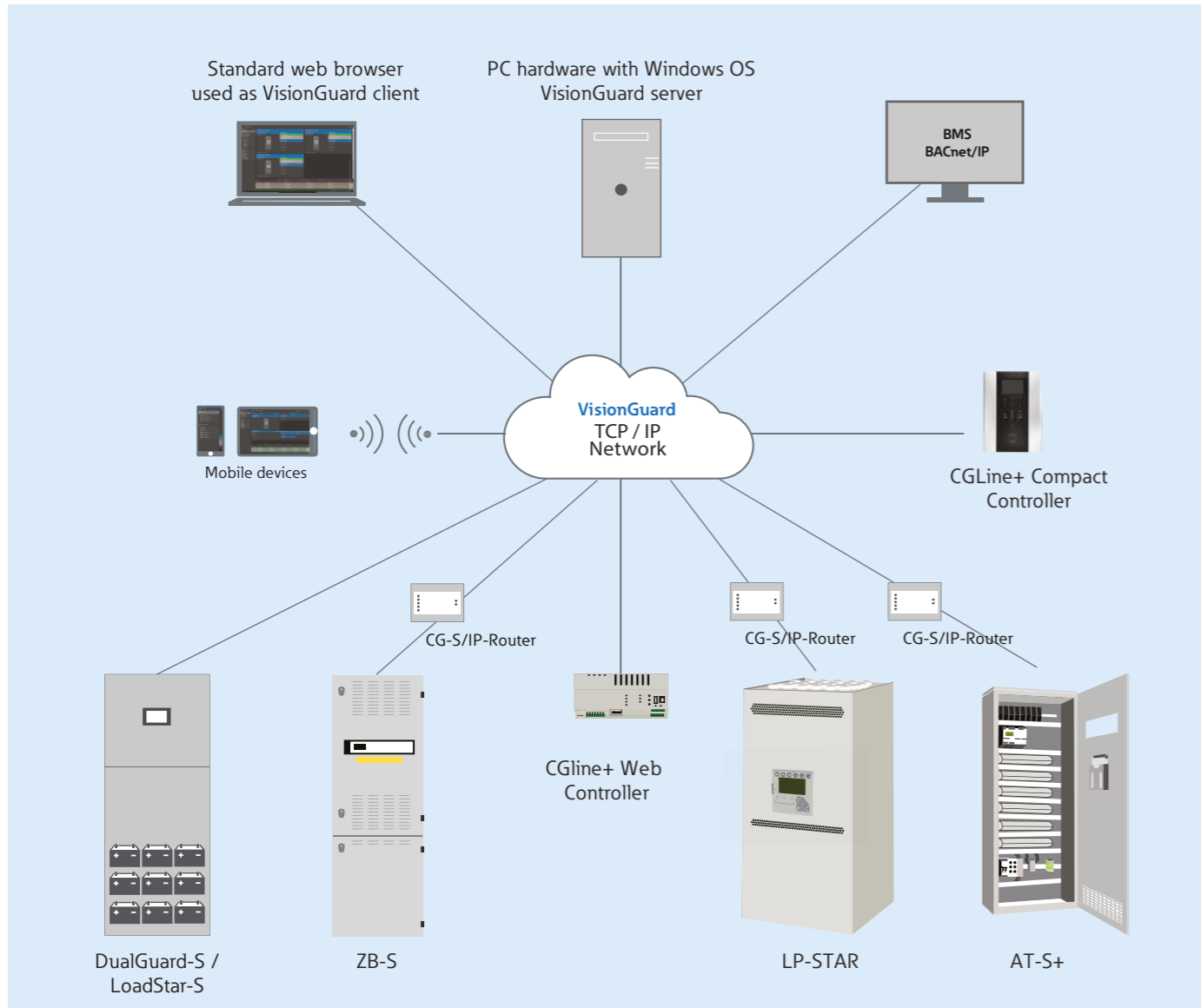
For the operation of CG-S systems, a CG-S Gateway software and a CG-S driver package must be installed and a CG-S license is required (USB-Dongle or Soft license)

Application example: VisionGuard used as a server installation



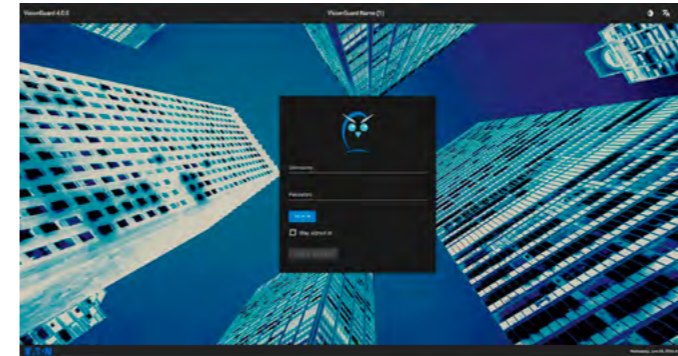
The VisionGuard server software can be installed in physical or virtual Windows-based server environments. Dongle-free software licensing eliminates the need for license servers. VisionGuard can be accessed via networked display devices such as PC workstations, mobile PCs or smartphones and from any web browser, so that any operating system, such as iOS, macOS or Android, can be used.

Application example: VisionGuard used as a server installation for DG-S / LS-S and CGLine+ with BMS connection via BACnet/IP



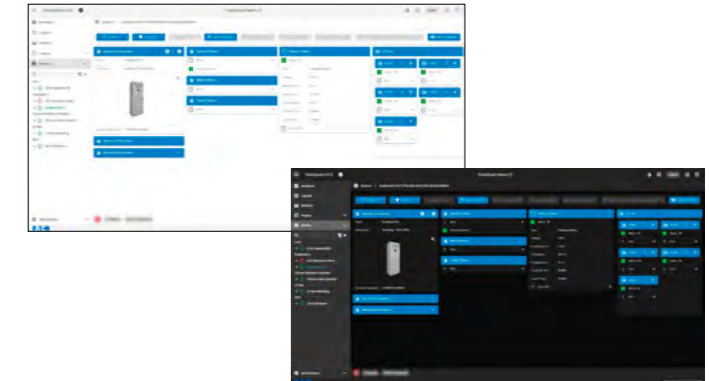
A BACnet/IP-based Building Management System (BMS) can be connected to VisionGuard via the optionally available BACnet server via the BACnet/IP protocol. The BACnet server offers numerous status messages and four analog battery values per DualGuard-S (DG-S) / LoadStar-S (LS-S) or CGLine+ emergency lighting system.

Login – a safe start



A secure password system prevents unauthorized access.

Light/dark mode



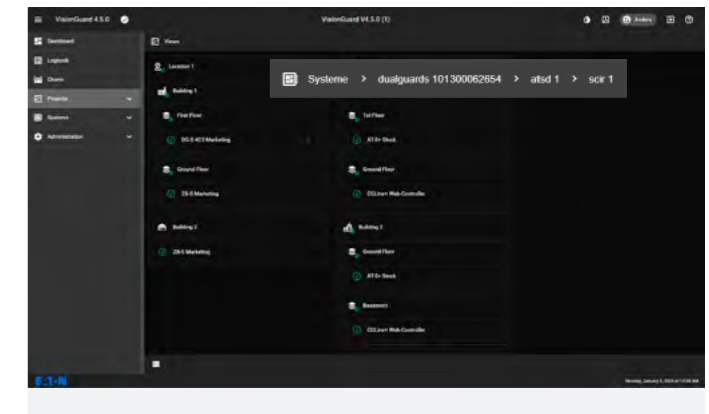
You can choose between light or dark mode on any screen.

Dashboard – everything at a glance



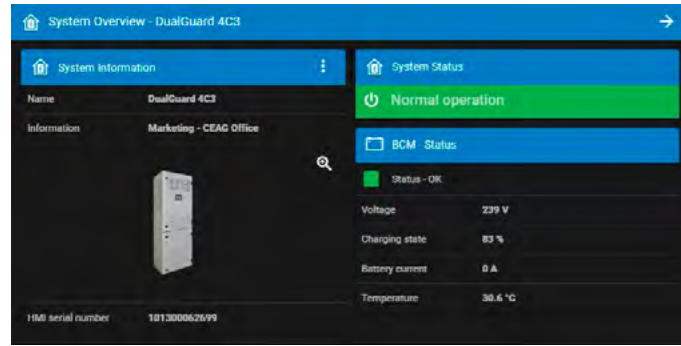
After logging in, the start-up dashboard appears, featuring a useful summary with information about the system. You can set up widgets to get with summary information about the projects.

Project navigation - easy orientation even for large projects



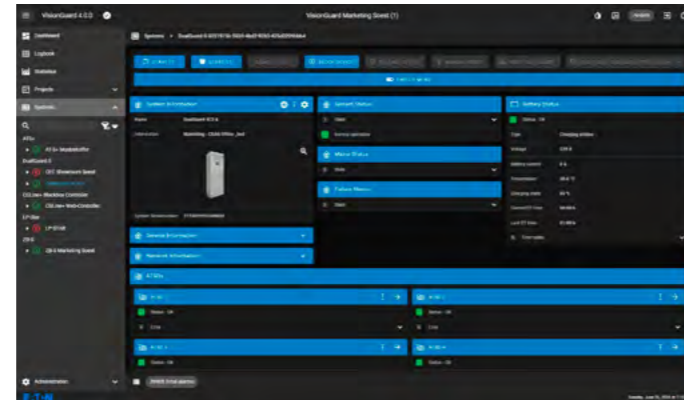
The modern project navigation with freely configurable navigation levels and its helpful "breadcrumb" trail for an easy orientation. For each hierarchy level, the overall status of the underlying emergency lighting systems is displayed transparently.

System overview – Important information at a glance



The high level system overview provides a quick view of the status of each system, with the messages „Normal operation“, „Battery operation“ and „Sum failure“, including analog battery values.

System overview



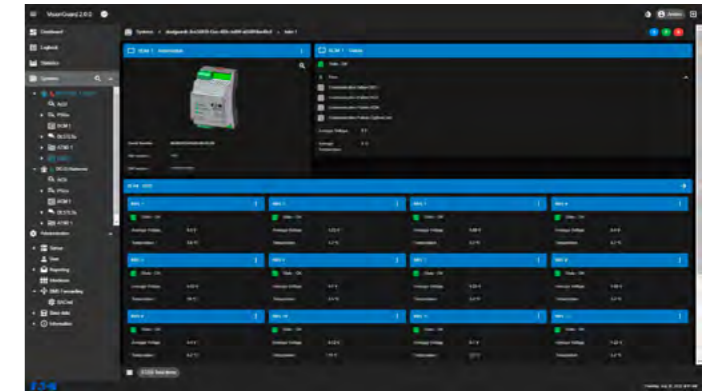
The detailed system overview displays all the important status information of the system, with a focus on what is actually necessary.

BACnet/IP interface Easy BMS integration



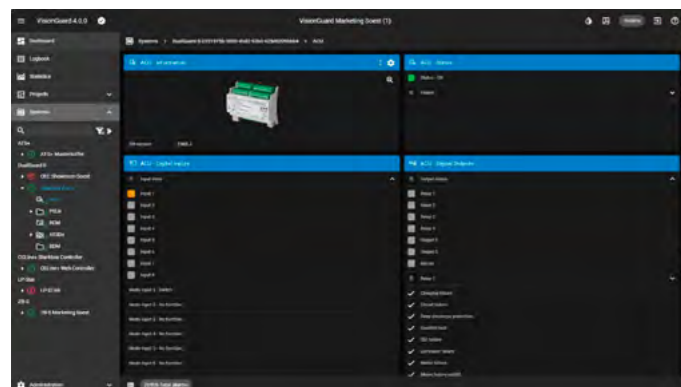
The optional BACnet/IP interface for all emergency lighting systems offers configurable BACnet objects with status messages for an easy connection to an external BACnet based Building Management System.

BBM Battery Block Monitoring



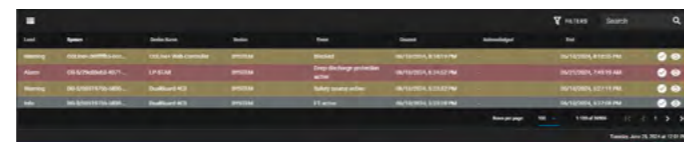
Every battery block under control – The optionally available Battery Block Monitoring (BBM) for DualGuard-S / LoadStar-S systems is clearly displayed in separate widgets. For each individual battery block there is a widget with the battery block voltage and battery block temperature. Inadmissible deviations of a single battery block can thus be reliably detected.

Systems Detailed view



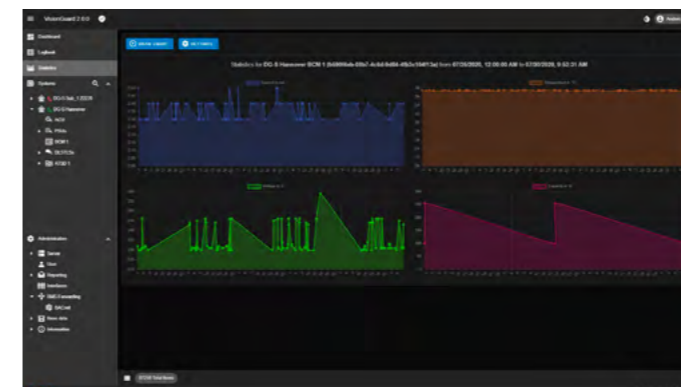
You can get detailed information in a widget of all DualGuard-S / LoadStar-S, ZB-S, LP-STAR or AT-S+ or CGLine+ components by clicking on the component in the navigation tree.

Alarm list – the latest events



Events are arranged in different colors by category. A date/time stamp indicates when the event occurred. The filter function makes it easy to search for specific events.

Charts menu



The charts menu displays the battery analog values such as battery voltage, battery current, battery room temperature and state of charge graphically over a configurable period of time. You can easily display progressions such as a battery duration test.



With well thought-out features

...always well informed

The VisionGuard software reduces the workload to a minimum, with fully automated processes and modern notification tools.

The integrated log book convinces with clever filter functions and fulfils the required standards

A user-friendly log book with filter function

All events are fully recorded in an electronic log book over a period of at least 4 years in accordance with DIN EN 50172 / DIN VDE V 0108-100-1. Comprehensive filter functions greatly simplify the retrieval of specific events.

ID	Device Name	Event	Status	Type	Device	Timestamp	Personal Comment
65851	DualGuard 4C3	Safety source active	End	DD-S	SYSTEM	06/26/2024, 1:41:45 PM	
65850	DualGuard 4C3	FT active	End	DD-S	SYSTEM	06/26/2024, 1:41:42 PM	
65849	DualGuard 4C3	Safety source active	Start	DD-S	SYSTEM	06/26/2024, 1:41:41 PM	
65848	DualGuard 4C3	Safety source active	End	DD-S	SYSTEM	06/26/2024, 1:41:38 PM	
65847	DualGuard 4C3	Safety source active	Start	DD-S	SYSTEM	06/26/2024, 1:38:57 PM	
65846	DualGuard 4C3	Luminaire failure	End	DD-S	SYSTEM	06/26/2024, 1:38:54 PM	
65845	DualGuard 4C3	FT active	Start	DD-S	SYSTEM	06/26/2024, 1:38:52 PM	
65844	DualGuard 4C3	Error	End	DD-S	ATSD/1/SCH/1/LUM/8	06/26/2024, 1:37:36 PM	
65843	AT-S+ Musterkoffer	FT active	End	CG-S	SYSTEM	06/26/2024, 11:38:14 AM	
65842	AT-S+ Musterkoffer	FT active	Start	CG-S	SYSTEM	06/26/2024, 11:37:10 AM	
65841	COLine+ Web-Controller	Logged in as administrator	End	COLine+	SYSTEM	06/26/2024, 11:13:42 AM	
65840	COLine+ Web-Controller	Logged in as administrator	Start	COLine+	SYSTEM	06/26/2024, 10:26:39 AM	
65839	COLine+ Web-Controller	Logged in as administrator	End	COLine+	SYSTEM	06/26/2024, 10:26:00 AM	
65838	COLine+ Web-Controller	Communication failure	Start	COLine+	LINE/1/ZONE/1/LUM/4	06/26/2024, 10:12:38 AM	
65837	COLine+ Web-Controller	FT active	End	COLine+	SYSTEM	06/26/2024, 10:12:36 AM	
65836	COLine+ Web-Controller	FT active	Start	COLine+	SYSTEM	06/26/2024, 10:11:39 AM	
65835	COLine+ Web-Controller	Logged in as administrator	Start	COLine+	SYSTEM	06/26/2024, 10:10:55 AM	
65834	COLine+ Web-Controller	Communication failure	End	COLine+	LINE/1/ZONE/1/LUM/4	06/26/2024, 10:10:26 AM	
65833	COLine+ Web-Controller	Logged in as administrator	End	COLine+	SYSTEM	06/26/2024, 10:10:09 AM	
65832	DualGuard 4C3	Safety source active	End	DD-S	SYSTEM	06/26/2024, 10:08:02 AM	

Seamless recording of all events

The adjustable e-mail function provides information about alarms and sends status reports after function testing with detailed information down to luminaire level

E-Mail Adresse	Ereignisse	Actions
...@eaton.com	Netztaustfall	[Icon] [Icon]
...@eaton.com	Handröckschaltung AE-CU Störung, BBM Störung, Statusbericht, ISO-Fehler, Externe Quelle gestört, Netztaustfall, DL/STLS Fehler, Externe Quelle aktiv, Übertragungsfehler	[Icon] [Icon]
...@eaton.com	Automatischer Statusbericht, Sonstiger Fehler, SKU/SOU Störung, Summenstörung, Leuchtenfehler, PSU Fehler, Netztaustfall 3PH, Sicherheitsstromquelle aktiv, BCM Fehler, CM Fehler	[Icon] [Icon]
...@eaton.com	Handröckschaltung AE-CU Störung, BBM Störung, Statusbericht, ISO-Fehler, Externe Quelle gestört, Netztaustfall, DL/STLS Fehler, Externe Quelle aktiv, Übertragungsfehler	[Icon] [Icon]
...@eaton.com	Automatischer Statusbericht, Sonstiger Fehler, SKU/SOU Störung, Summenstörung, Leuchtenfehler, PSU Fehler, Netztaustfall 3PH, Sicherheitsstromquelle aktiv, BCM Fehler, CM Fehler	[Icon] [Icon]
...@eaton.com	Handröckschaltung AE-CU Störung, BBM Störung, Statusbericht, ISO-Fehler, Externe Quelle gestört, Netztaustfall, DL/STLS Fehler, Externe Quelle aktiv, Übertragungsfehler	[Icon] [Icon]
...@eaton.com	Automatischer Statusbericht, Sonstiger Fehler, SKU/SOU Störung, Summenstörung, Leuchtenfehler, PSU Fehler, Netztaustfall 3PH, Sicherheitsstromquelle aktiv, BCM Fehler, CM Fehler	[Icon] [Icon]

E-mail settings menu with adjustable alarm notifications



A convincing technology

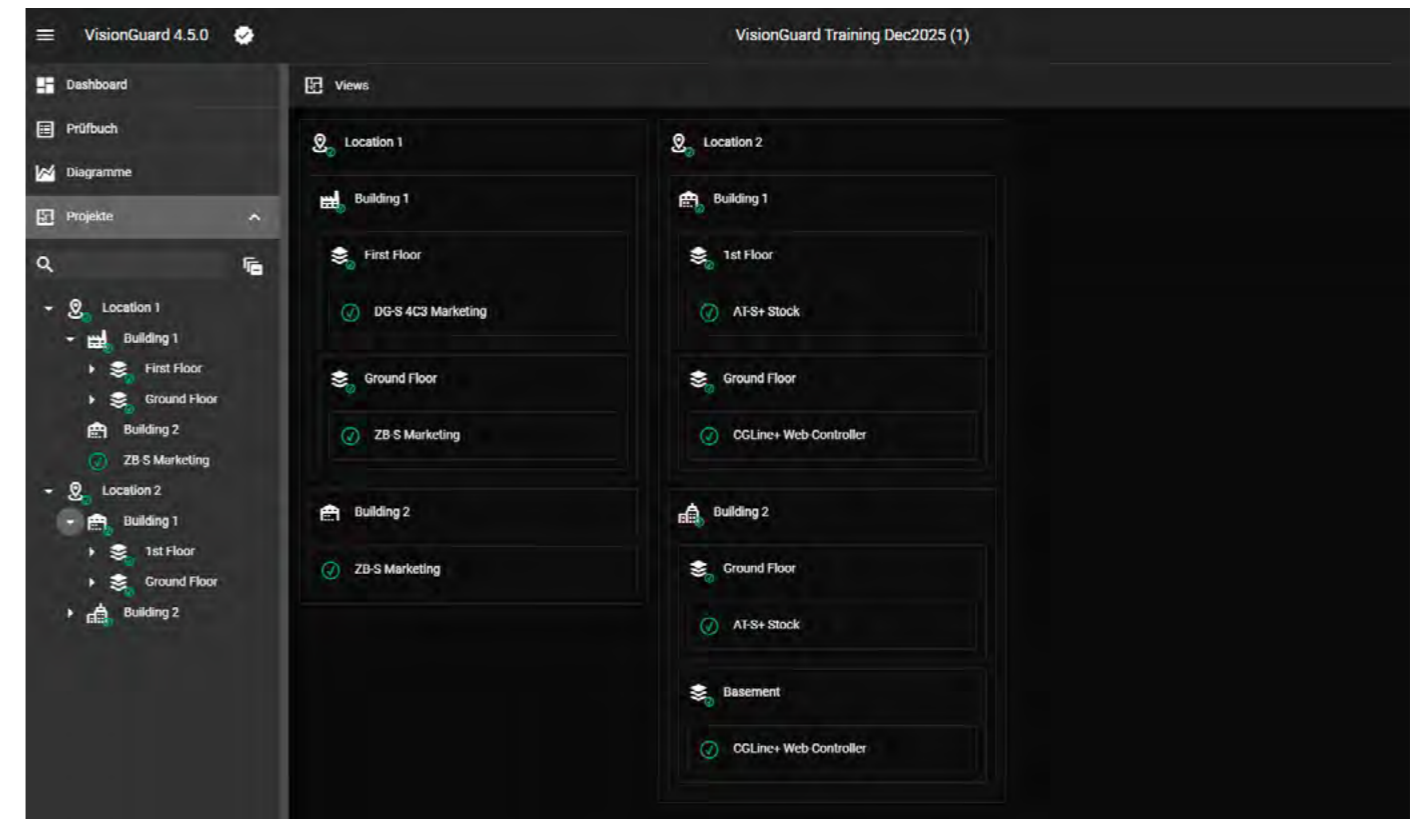
...with orientation made easy

VisionGuard is the ideal monitoring solution for complex emergency lighting systems, from small projects to large-scale emergency lighting installations such as those found at airports.

With the graphical representation of all relevant status information in a site plan or a building layout plan, you always have a clear overview.

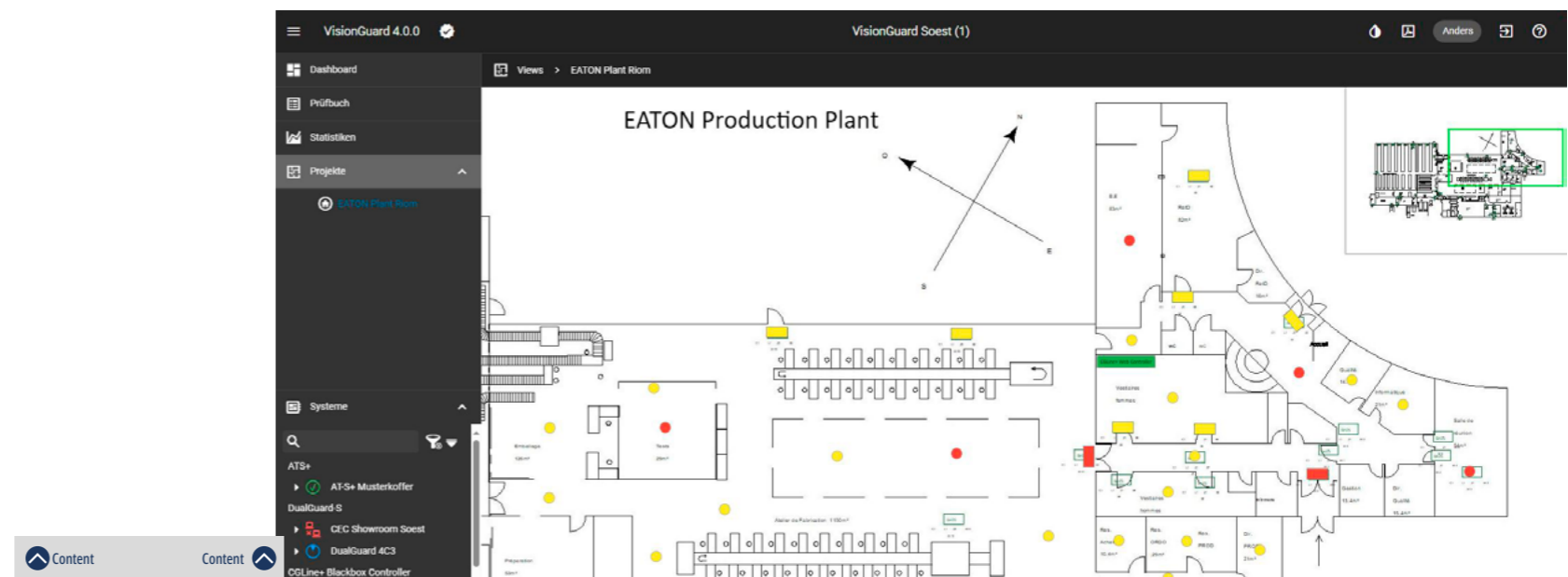
Modern project navigation for an easy orientation

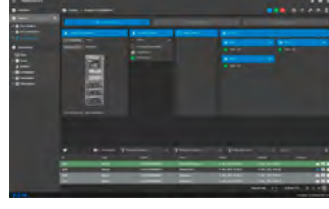
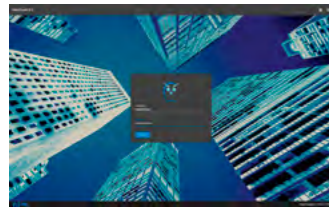
A modern project navigation provides a clear and concise orientation even for large projects. Any number of levels (e.g. locations, buildings, storeys, etc.) can be created. The EML systems can be placed anywhere in the levels. This creates a clear overview even for complex projects. A summary status (OK or summary fault) of all emergency lighting systems located on each level is displayed.



Building Layout Programming for a graphical view

An optional building layout visualisation enables a convenient view of system status and luminaires as graphical coloured data points in a building layout. The colours of the data points enable immediate recognition of the status. Tooltips (pop-up windows) display further information (e.g. luminaire name) on the data points.





Monitoring software VisionGuard V4.5.0

- A modern web-based client/server architecture: Use of standard web browser on the client PC, no special client software installation necessary
- Extremely versatile: full visualisation, monitoring and programming of up to 500 emergency lighting systems with over 100,000 emergency luminaires
- Full monitoring, control and configuration of DualGuard-S (DG-S) / LoadStar-S (LS-S), ZB-S, LP-STAR and CGLine+ and full monitoring and control of AT-S+ emergency lighting systems.
- A modern project navigation with combined building layout representation (available as option: Building Layout Programming) offers a clear orientation even for large projects
- Optional: The Building Layout Programming allows a representation of System status information and Luminaire status in standard graphic files such as .dwg, .dxf, .svg, .png, .bmp and .jpg format
- Transparent and user-friendly log books and extensive print functions (Status print-out) provide a clear overview
- Automatic notifications: The integrated e-mail function with numerous setting options conveniently sends information via e-mail and thereby eliminates the need for in-person inspections
- Optional: BACnet/IP interface for all systems: this allows easy connection to an external building management system (BMS) via the BACnet protocol
- Battery block monitoring (only for DG-S / LS-S): graphic display of the optionally available individual battery block monitoring with single battery block voltage and single battery block temperature

VisionGuard V4.5.0 - system hardware / software requirements:

Server	Standard Windows® PC (tower, rack), Virtual Machine (VMWare/Hyper-V)
Operating system	Windows® 11 Pro. , Windows® 10 Pro. (64 Bit), Windows® Server 2019 , Windows® Server 2022, Windows® Server 2025
Processor	Min. Intel i5 or AMD Ryzen 5
Working memory	Min. 16GB for VisionGuard Basic Version 3 / 10 / 25 min. 32GB for VisionGuard Basic Version 50 / 100 / 500 (64GB recommended)
Memory	Min. 300 GB free space
Hard drive (min. recommended)	1 TB SSD
Resolution	Full HD 1920 x 1080 or higher
Client	Standard PC workstation, Mobile devices (Tablet PC, Smartphone)
Graphics	DirectX 12
Software	Standard web browser, such as Edge, Chrome, Firefox, Safari
Display	Min. 19" (recommended 24" or higher)
Ideal resolution	Full HD 1920 x 1080 or higher
Peripheral devices	Keyboard, mouse, printer

VisionGuard V4.5.0

- Multi-user operation: Modern web-based client/server architecture that can be accessed independently and in parallel (only DG-S / LS-S and CGLine+) from different workstations. On CG-S systems the parallel access is limited.
- Dongle-free software licensing
- Optionally available as a certificate with download link and licence key, or VisionGuard software on USB stick with licence key. For CG-S an additional CG-S soft-licence is needed.
- Tiered versions, from 3 to 500 emergency lighting systems
- Modern web-based dashboard design with widgets (graphic window system)
- Responsive web-design, for different display sizes
- Full visualisation, control and configuration of DualGuard-S (DG-S) / LoadStar (LS-S), ZB-S, LP-STAR und CGLine+ emergency lighting systems down to the level of the luminaires.
- Full monitoring and control of AT-S+ emergency lighting systems
- A modern project navigation enables a clear arrangement of all connected emergency lighting systems in a navigation tree with freely configurable levels
- The optional Building Layout Programming allows a comfortable representation of System status information and Luminaire status in a site plan or floor plan
- User access control with four user roles (supervisor, administrator, power user and user)
- Detailed e-mail function (Status Mail Report and Alarm E-Mailing)
- Advanced printing functions
- Cyber security tested (EATON)
- BACnet/IP Interface for external BMS optionally available for all systems. (can be activated individually for each system)
- Statistic export function in external applications
- Substation Setup: Clear representation of a central battery system with connected substations

Volume licensing

Basic version for 3 devices
Basic version for 10 devices
Basic version for 25 devices
Basic version for 50 devices
Basic version for 100 devices
Basic version for 500 devices
Option: BACnet/IP Interface for external Building Management System (BMS)
Option: Building Layout Programming

27" TFT display

Large TFT flat screen with IPS display and high resolution (1920 x 1200) for displaying the VisionGuard visualisation, monitoring and programming software via a PC system.

PC-Miditower

A powerful PC system for installing and operating the VisionGuard visualisation, monitoring and programming software. Includes Windows® 11, unlicensed VisionGuard preinstalled (Licence must be purchased optionally), PC: high-performance Intel Core i7 processor, 16 GB RAM, 512 GB SSD, mouse and keyboard. (German layout)



Software order information

Part no.	Included with delivery	Article no.
VisionGuard basic version 3	Certificate with download link and licence key	40071362800
VisionGuard basic version 3 / USB	VisionGuard Software on USB-Stick with licence key file	40071362801
VisionGuard basic version 10	Certificate with download link and licence key	40071362805
VisionGuard basic version 10 / USB	VisionGuard Software on USB-Stick with licence key file	40071362806
VisionGuard basic version 25	Certificate with download link and licence key	40071362810
VisionGuard basic version 25 / USB	VisionGuard Software on USB-Stick with licence key file	40071362811
VisionGuard basic version 50	Certificate with download link and licence key	40071362815
VisionGuard basic version 50 / USB	VisionGuard Software on USB-Stick with licence key file	40071362816
VisionGuard basic version 100	Certificate with download link and licence key	40071362820
VisionGuard basic version 100 / USB	VisionGuard Software on USB-Stick with licence key file	40071362821
VisionGuard basic version 500	Certificate with download link and licence key	40071362825
VisionGuard basic version 500 / USB	VisionGuard Software on USB-Stick with licence key file	40071362826

Available options for VisionGuard

VisionGuard Building Layout Programming	Certificate with download link and licence key	40071362830
VisionGuard Building Layout Programming / USB	VisionGuard Software on USB-Stick with Building Layout licence key file	40071362831
VisionGuard BACnet/IP Interface for external BMS (only DG-S)	Certificate with download link and licence key	40071362835
VisionGuard BACnet/IP Interface for external BMS (only DG-S) / USB	VisionGuard Software on USB-Stick with BACnet/IP Interface licence key file	40071362836
CG-S/IP-Interface soft license	CG-S/IP-Interface soft license to connect CG-S Systems to VisionGuard (The MAC address is required in advance)	40071362852

Hardware order information

Part no.	Included with delivery	Article no.
PC-Miditower	with high-performance Intel Core i7 processor, incl. optical mouse and Windows® 11 Pro. (64 bit), unlicensed VisionGuard software pre-installation included	40071362880
27" TFT display	IPS display with 1920 x 1200 native resolution	40071347155
Inkjet printer colour	Multifunction printer DIN A4 with inkjet (colour), scan and copy function	40071340753
Laser printer colour	High quality colour laser printer DIN A4	40071362850

Eaton is an intelligent power management company dedicated to protecting the environment and improving the quality of life for people everywhere. We make products for the data center, utility, industrial, commercial, machine building, residential, aerospace and mobility markets. We are guided by our commitment to do business right, to operate sustainably and to help our customers manage power today and well into the future. By capitalizing on the global growth trends of electrification and digitalization, we're accelerating the planet's transition to renewable energy sources, helping to solve the world's most urgent power management challenges, and building a more sustainable society for people today and generations to come.

Eaton was founded in 1911 and has been listed on the New York Stock Exchange for more than a century. We reported revenues of \$23.2 billion in 2023 and serve customers in more than 160 countries. For more information, visit www.eaton.com

