

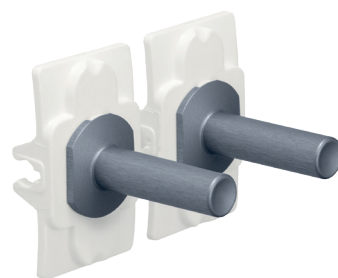
Niko Toggle set for double switch functions, alu blue grey

226-57002

4 year
warranty

The Niko Toggle set contains a left and a right Toggle part. The left part clicks onto the left switch function. The right part clicks onto the right switch function. Click both Toggle parts onto the function before you click the Niko Toggle faceplate into place.

The Niko Toggle set consist of a click connector made out of high grade, durable plastic that permanently fixes the two levers. The levers are made of anodized aluminum.



Technical data

Niko Toggle set for double switch functions, alu blue grey.

- Material: anodized aluminum
- Dimensions (HxWxD): 26.8 x 16.9 x 28.4 mm
- Marking: CE

CE