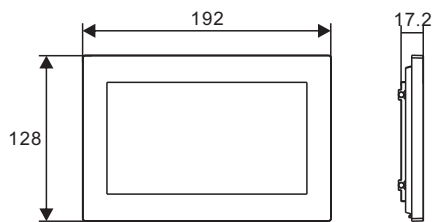
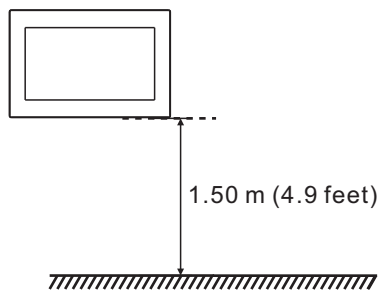


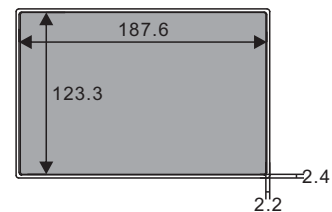
Product dimension (Unit: mm)



Installation height



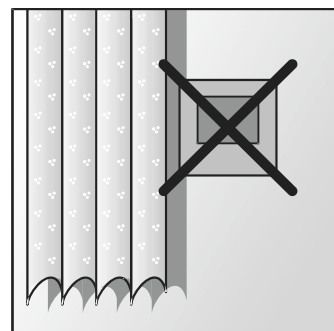
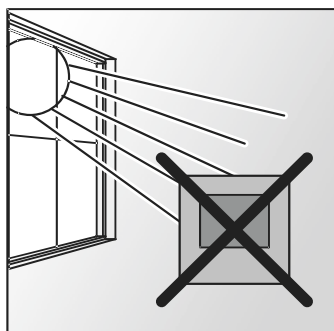
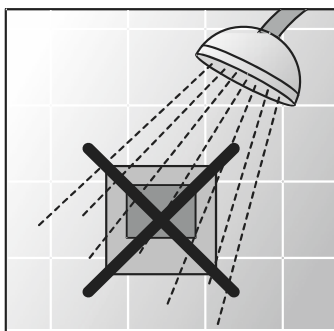
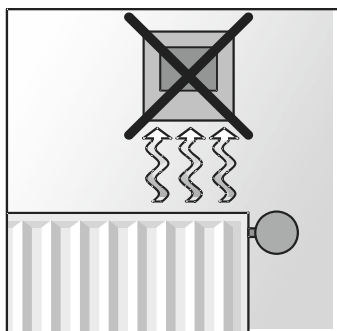
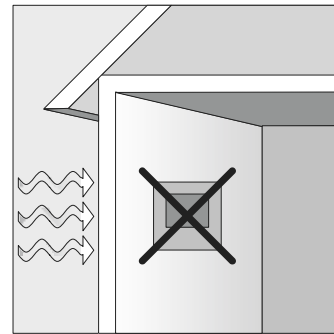
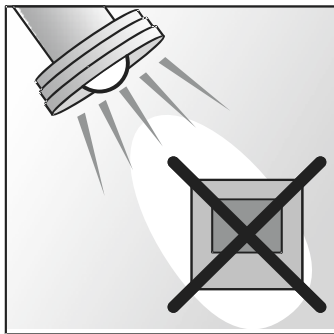
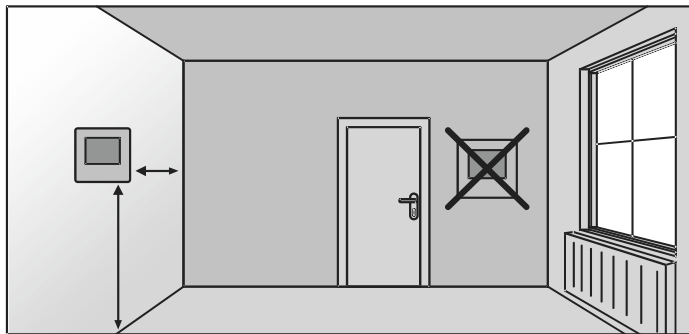
Surface mounting box size (Unit: mm)



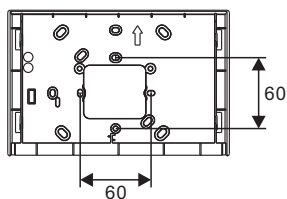
H8249

2TMU230000M0014100

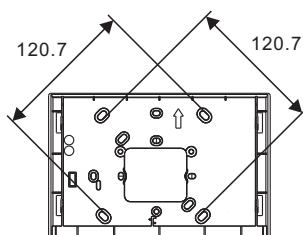
Location



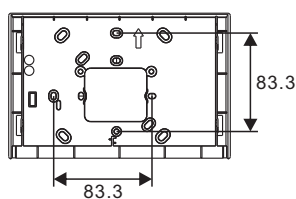
Surface mounted with the electrical accessory box (Unit: mm)



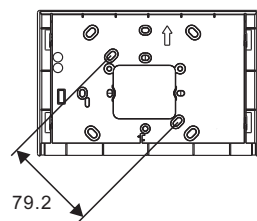
VDE&BS



NEMA (America)

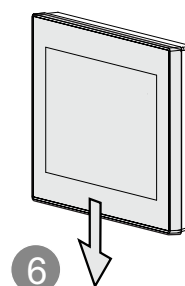
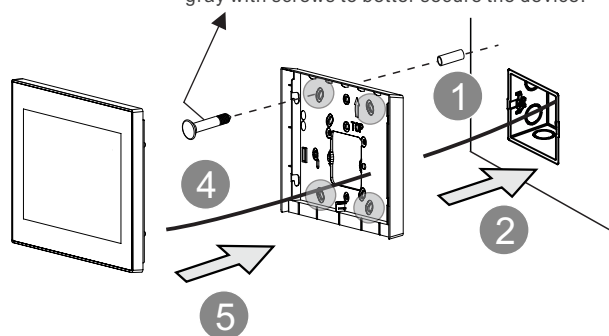


NEMA & Italy

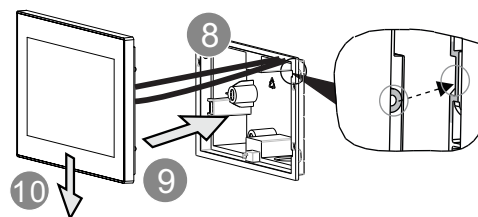
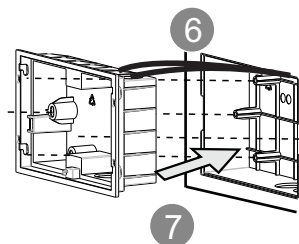
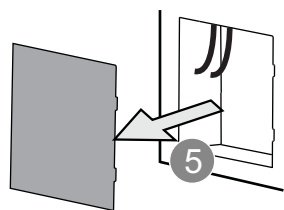
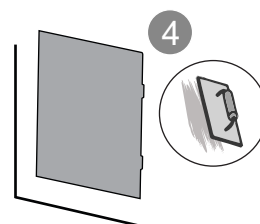
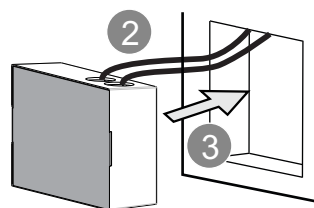
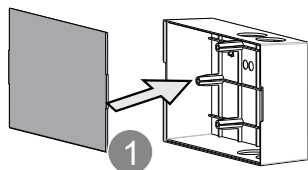
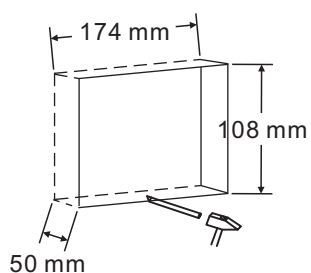


Swiss

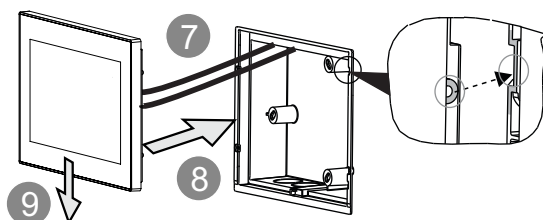
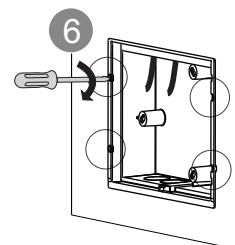
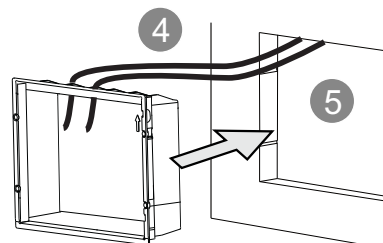
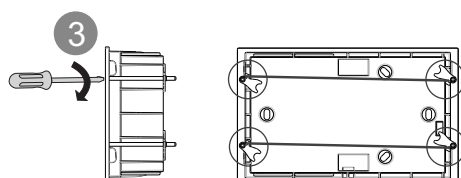
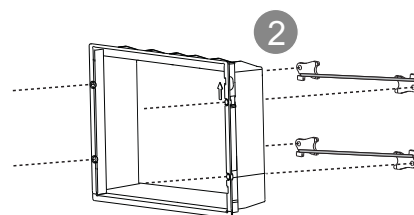
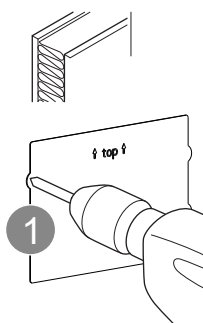
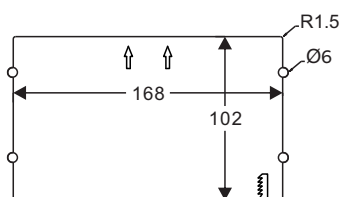
- 3 Screw the mounting bracket to accessory box. It is recommended to lock the positions marked in gray with screws to better secure the device.



Flush mounted installation (Unit: mm)



Cavity wall installation (Unit: mm)



Dismantle

