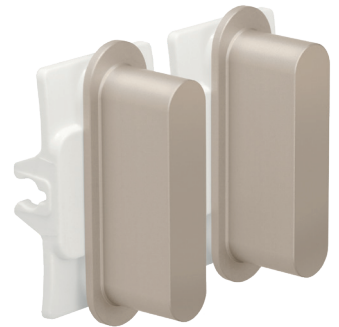


# Niko Rocker set for double switch functions, steel champagne coated

166-56002

4 year  
warranty

The Niko Rocker set contains a left and a right Rocker part. The left part clicks onto the left switch function. The right part clicks onto the right switch function. Click both Rocker parts onto the function before you click the Niko Rocker faceplate into place. The Niko Rocker set consist of a click connector made out of high grade, durable plastic that permanently fixes the two levers. The levers are made of enamelled aluminium.



## Technical data

Niko Rocker set for double switch functions, steel champagne coated.

- Material: enamelled aluminium
- Colour: enamelled champagne (approximately NCS S 4005 - Y20R, RAL 080 70 10)
- Dimensions (HxWxD): 31 x 16.9 x 18.5 mm
- Marking: CE

