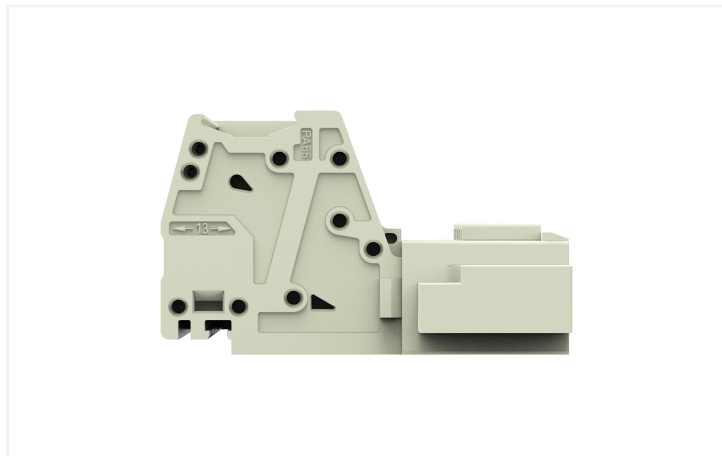
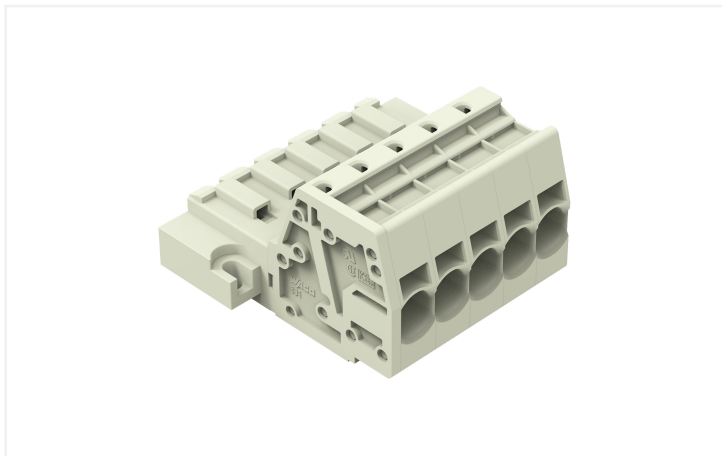


Data Sheet | Item Number: 831-3205/109-000

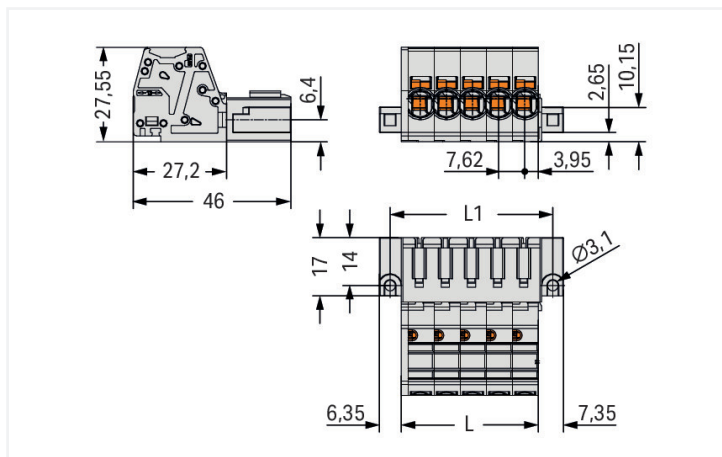
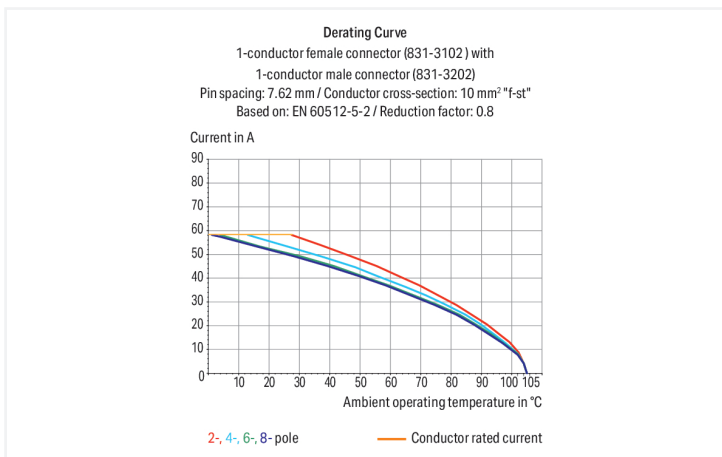
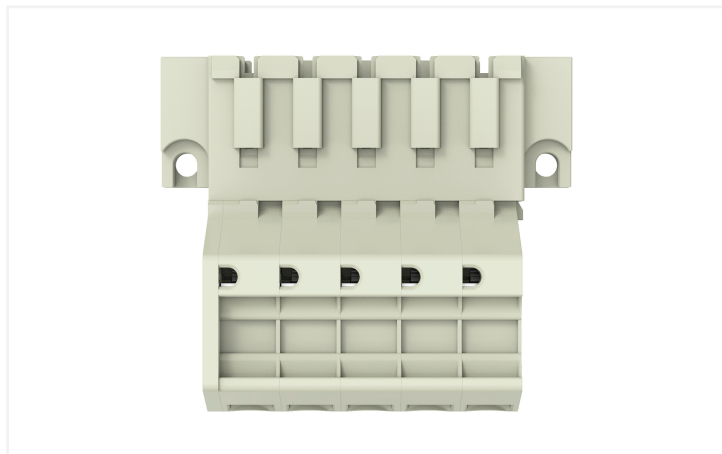
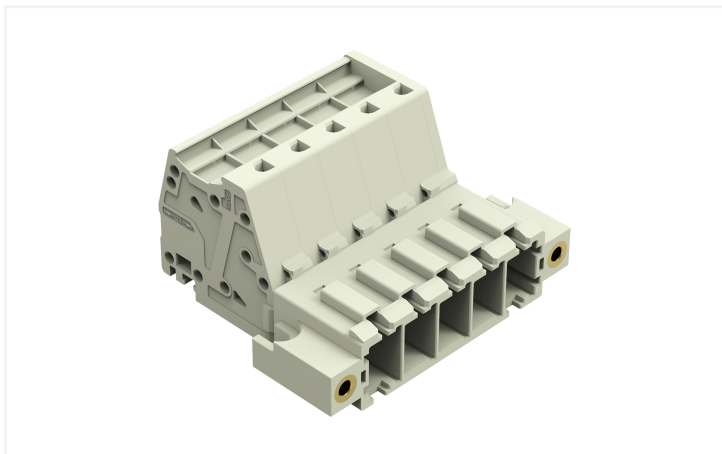
1-conductor male connector; Push-in CAGE CLAMP®; 10 mm²; Pin spacing 7.62 mm; 5-pole; 100% protected against mismatching; Threaded flange; 10,00 mm²; light gray



<https://www.wago.com/831-3205/109-000>



Color: ■ light gray



Male connector, 831 Series, with 7.62 mm pin spacing

Our male connector (item number 831-3205/109-000) simplifies electrical installations. Conductors can only be connected to this male connector if their strip length is between 13 and 15 mm. This product features one conductor terminal and utilizes Push-in CAGE CLAMP®. Our Push-in CAGE CLAMP® is a universal, maintenance-free connection solution for all conductor types, boasting a key feature: both solid and fine-stranded conductors with ferrules can be directly inserted without the need for tools or any preparation, such as crimping the ferrule. The item's dimensions are (53.7 x 27.6 x 46) mm (width x height x depth). Depending on the type of conductor, this male connector is ideal for conductor cross sections ranging from 0.5 mm² to 10 mm².

The contact surface is coated with tin.

Notes	
Safety Information	The MCS – MULTI CONNECTION SYSTEM includes connectors without breaking capacity in accordance with DIN EN 61984. When used as intended, these connectors must not be connected/disconnected when live or under load. When used as intended, these connectors must not be connected/disconnected when live or under load. The circuit design should ensure header pins, which can be touched, are not live when unmated.
Variants:	Other pole numbers Other versions (or variants) can be requested from WAGO Sales or configured at https://configurator.wago.com/ .

Electrical data									
Ratings per		IEC/EN 60664-1			Approvals per		UL 1059		
Overvoltage category		III	III	II	Use group		B	C	D
Pollution degree		3	2	2	Rated voltage		-	600 V	-
Nominal voltage		800 V	1000 V	1000 V	Rated current		-	42 A	-
Rated impulse withstand voltage		8 kV	8 kV	8 kV					
Rated current		41 A	41 A	41 A					
Approvals per		CSA							
Use group		B	C	D					
Rated voltage		-	600 V	-					
Rated current		-	41 A	-					

Connection Data		Connection 1	
Clamping units	5	Connection technology	Push-in CAGE CLAMP®
Total number of potentials	5	Actuation type	Operating tool
Number of connection types	1	Actuation direction 1	Operation parallel to conductor entry
Number of levels	1	Solid conductor	0.5 ... 10 mm² / 20 ... 8 AWG
		Fine-stranded conductor	0.5 ... 10 mm² / 20 ... 8 AWG
		Fine-stranded conductor; with insulated ferrule	0.5 ... 6 mm²
		Fine-stranded conductor; with uninsulated ferrule	0.5 ... 6 mm²
		Strip length	13 ... 15 mm / 0.51 ... 0.59 inches
		Pole number	5
		Conductor entry direction to mating direction	0°

Physical data

Pin spacing	7.62 mm / 0.3 inches
Width	53.7 mm / 2.114 inches
Height	27.6 mm / 1.087 inches
Depth	46 mm / 1.811 inches

Mechanical data

Variable coding	Yes
Anti-rotation protection	Yes

Plug-in connection

Contact type (pluggable connector)	Male connector/plug
Connector (connection type)	for conductor
Mismating protection	Yes
Locking of plug-in connection	Threaded flange

Material data

Note (material data)	Information on material specifications can be found here
Color	light gray
Material group	I
Insulation material (main housing)	Polyamide (PA66)
Flammability class per UL94	V0
Clamping spring material	Chrome-nickel spring steel (CrNi)
Contact material	Electrolytic copper (E _{Cu})
Contact Plating	Tin
Fire load	0.649 MJ
Weight	36 g

Environmental requirements

Limit temperature range	-60 ... +105 °C
Processing temperature	-35 ... +60 °C

Commercial data

PU (SPU)	24 pcs
Packaging type	Box
Country of origin	PL
GTIN	4066966091649
Customs tariff number	85366930000

Product Classification

UNSPSC	39121409
ETIM 9.0	EC001284
ETIM 10.0	EC001284
ECCN	NO US CLASSIFICATION

Environmental Product Compliance

CAS-No.	7439-92-1
REACH Candidate List Substance	Lead
RoHS Compliance Status	Compliant, No Exemption
SCIP notification number (Austria)	205f46b2-ae9c-498e-b8b1-73866670ab68
SCIP notification number (Belgium)	d75b0775-c2dc-4c79-b80b-7f09e30b1558
SCIP notification number (Bulgaria)	437b4a5c-cf28-42ae-97a6-a1481df0582b
SCIP notification number (Czech Republic)	a83efcb6-0c32-4b35-92bc-922ed5761f7d
SCIP notification number (Denmark)	df67954b-f3f4-412c-844b-7b0a6dad368
SCIP notification number (Finland)	c2fb9892-ef35-4025-9d23-1e9d7e16c3d4
SCIP notification number (France)	7c14bf79-674d-4927-92b8-dcb25105d2ee
SCIP notification number (Germany)	1ac432e3-86a0-41a3-ae84-c3a9e94bbca7
SCIP notification number (Hungary)	7fd39ee6-79bb-4657-984a-f3f9fd8c0b8d
SCIP notification number (Italy)	e8ffd899-0091-4fc0-a8f0-42b034c8420d
SCIP notification number (Netherlands)	69138cec-5f84-47d8-96c2-50a62541951e
SCIP notification number (Poland)	a3b80312-17cb-45a5-8cb4-ce724003af28
SCIP notification number (Romania)	d9410bec-7016-439b-b508-5523396dfc25
SCIP notification number (Sweden)	04cdb9d5-c136-4d3d-be9a-a0376da760a0

Approvals / Certificates

General approvals



Approval	Standard	Certificate Name
CB DEKRA Certification B.V.	IEC 61984	NL-61360/M1
KEMA/KEUR DEKRA Certification B.V.	EN 61984	71-116057
UR Underwriters Laboratories Inc.	UL 1059	UL-US-2426356-0

Downloads

Environmental Product Compliance

Compliance Search	
Environmental Product Compliance 831-3205/109-000	↓

Documentation

Additional Information			
Technical Section	03.04.2019	pdf 2027.26 KB	↓

CAD/CAE-Data

CAD data

2D/3D Models
831-3205/109-000



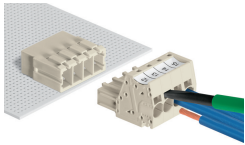
CAE data

ZUKEN Portal
831-3205/109-000

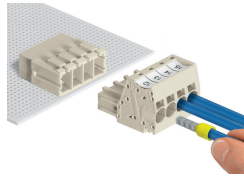


Installation Notes

Conductor termination

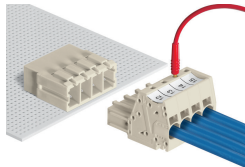


Inserting fine-stranded conductors via (5.5 x 0.8) mm screwdriver.



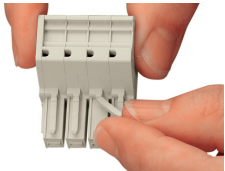
Solid and ferruled conductors are terminated by simply pushing them into unit.

Testing

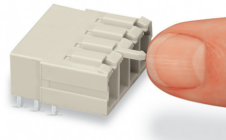


Testing with 2 mm Ø test plug.

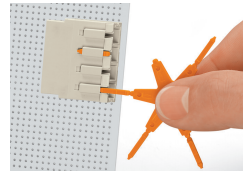
Coding



Break or cut off coding pin from female connector.



Insert coding pin into male header (break first) until it engages.



Coding a THT male header by inserting a coding pin.

Marking



Direct marking of female and male connectors



MCS MAXI male and female connectors can also be marked via Mini-WSB or WMB markers.