

SenseLink

BY PROLUMIA

WIRELESS GROUPING SENSOR

EXPERIENCE THE CONVENIENCE AND COMFORT
OF LIGHTING THAT AUTOMATICALLY SWITCHES,
DIMS AND COMMUNICATES WIRELESSLY

SenseLink

WIRELESS GROUPING SENSOR

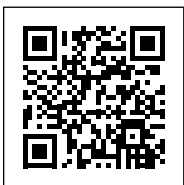
EXPERIENCE THE CONVENIENCE AND COMFORT OF LIGHTING THAT AUTOMATICALLY SWITCHES, DIMS AND COMMUNICATES WIRELESSLY

SenseLink luminaires communicate wirelessly and can be linked in groups that function simultaneously. Benefit from additional energy savings of up to tens of percent!

SenseLink, the innovative network sensor with motion detection, corridor functionality, daylight-dependent operation and wirelessly programmable master/slave operation, brings advanced lighting control within reach.

Prolumia luminaires with SenseLink sensors, such as the updated Prodisc III, Rockdisc III and Pro-Aqua IV, make this possible.

MORE INFO ABOUT
SENSELINK ONLINE:



MOTION
DETECTION



ADJUSTABLE
DETECTION RANGE



ADJUSTABLE
HOLD TIME



ADJUSTABLE
STANDBY TIME



DAYLIGHT
SENSOR



TWILIGHT
SWITCH



CORRIDOR
FUNCTION



REMOTE
CONTROL



WIRELESS
GROUPING



OFFLINE
SECURITY

SENSELINK

MODERN TECHNOLOGY
THAT TAKES YOUR PROJECT
TO THE NEXT LEVEL

SENSELINK MODULES ARE FULLY INTEGRATED INTO THE LUMINAIRE AND FEATURE INNOVATIVE TECHNOLOGY

MOTION DETECTION

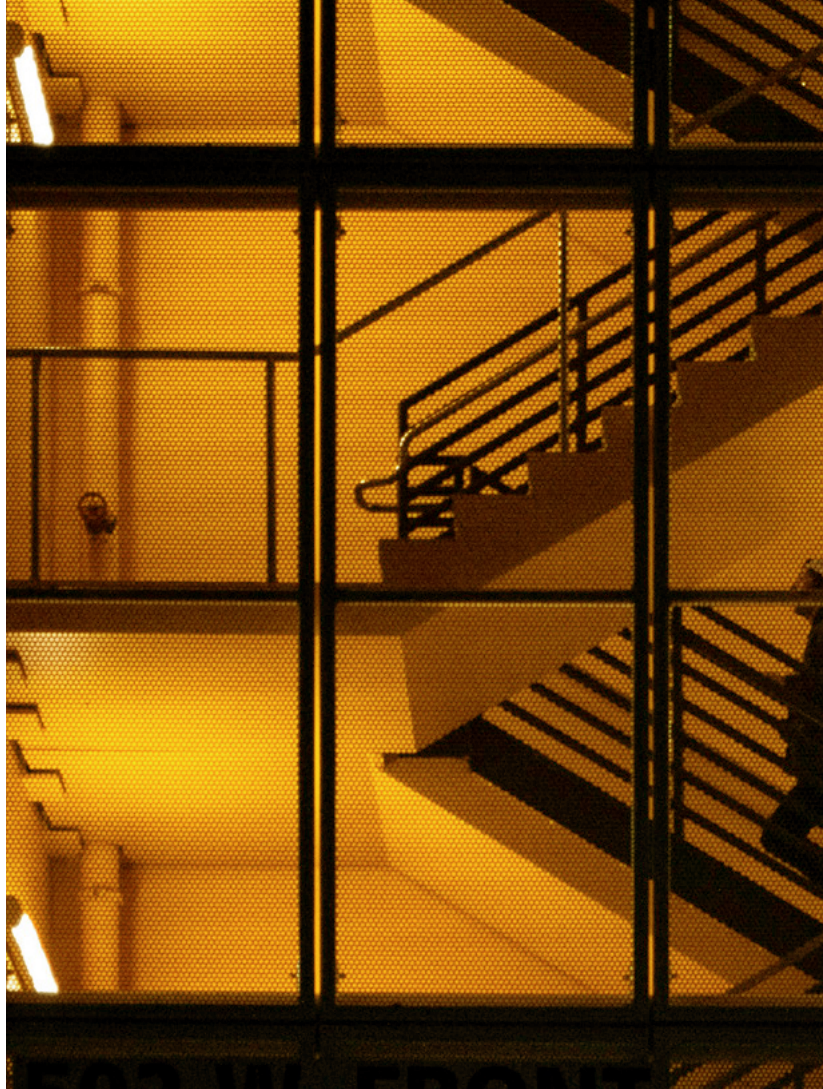
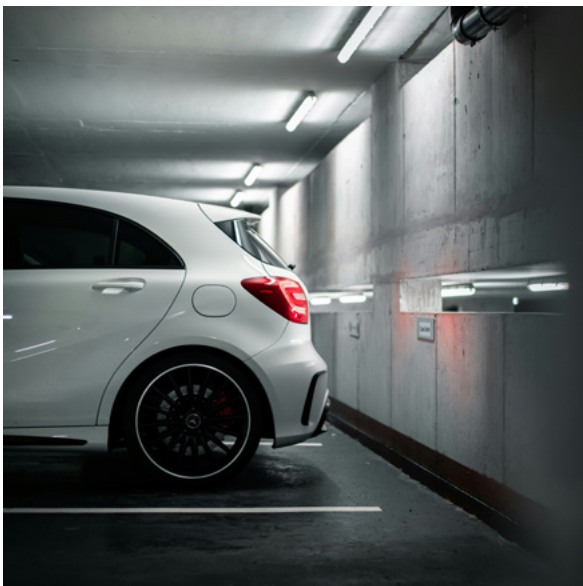
Microwave technology detects the movement of people and objects and switches on the lighting. Unlike PIR sensors, motion detection is not dependent on temperature differences. This ensures reliable operation, both indoors and outdoors, under various conditions.

DAYLIGHT SENSOR

The integrated photocell measures the intensity of daylight. This prevents the lighting from being switched on when there is sufficient daylight. On the other hand, the sensor can be set so that the lighting is automatically switched on at dusk and switches itself off again at sunrise.

RF MODULE

Enables wireless communication between SenseLink luminaires. Luminaires can be divided into groups and operate wirelessly in a master/slave configuration. In addition, the specific settings of one luminaire can be synchronised to all other luminaires in the same group at the touch of a button.



SENSELINK INNOVATIVE LIGHTING THAT WORKS TO YOUR ADVANTAGE

ADVANTAGES FOR INSTALLERS AND END USERS

- Modern lighting solution with intelligent sensor control
- Automatic switching and dimming based on motion and daylight
- Adaptive lighting where it's needed and at the right level
- Easy to install, adjust and commission
- Fixtures can be linked wirelessly for synchronized operation
- Innovative, affordable and widely applicable lighting control system
- Reduces energy consumption, enhanced user comfort in daily use



SENSELINK

AN EXCEPTIONAL LIGHTING
INSTALLATION STARTS WITH
A CLEVER PLAN

DISCOVER THE MANY ADVANTAGES OF ADAPTIVE LIGHTING

LIGHTING ON DEMAND

Light that automatically turns on when a dark room entered, stays on as long as the room is in use, and automatically turns off when the room is vacated. But only when necessary, because if there is sufficient daylight, the lighting can simply remain off.

NOCTURNAL ORIENTATION LIGHTING

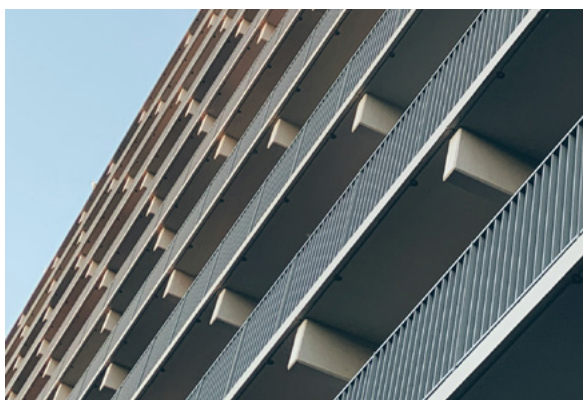
Perhaps, at dusk, the lights at the entrances and exits of a building should switch on automatically and remain dimmed throughout the night. This may also be desirable for orientation and safety reasons in a gallery or stairwell. Dimmed lighting that automatically switches to 100% when movement is detected, then returns to the dimmed setting and only switches off completely at daybreak.

ANTICIPATORY LIGHTING CONTROL

Lighting that 'thinks ahead', follows where people go and switches off where they have been. A sensor that simultaneously switches on a group of luminaires and illuminates the part of the parking lot that a car is (potentially) entering. After a while, the lighting switches off or remains on at a dimmed level (corridor mode) for a while before switching off completely.

ORIENTATION AND SAFETY IN STAIRWELLS

Or in a stairwell, where the lighting switches on not only on the ground floor, but also on the first floor. As soon as the first floor is reached, the light on the ground floor dims and the light on the second floor switches on.



AREAS OF APPLICATION

- Renovation/retrofit projects (with limitations in existing cable infrastructure)
- Collective residential facilities (shared spaces)
- Office buildings (corridors and stairwells)
- Hotels/restaurants (reception, lounge areas, sanitary facilities, corridors)
- Distribution centres, warehouse, archive and server rooms
- Car parks, access routes and walkways to/from parking spaces

SENSELINK MAKES IT ALL POSSIBLE

SENSELINK

DISCOVER OUR SOPHISTICATED
LIGHTING SOLUTIONS
AND START SAVING



PRODISC III

A SOPHISTICATED LIGHTING SOLUTION WITH
VERSATILE FUNCTIONALITY FOR LONG-LASTING,
CARE-FREE USER COMFORT

- Available in standard, sensor & emergency versions
- Corridor function / master-slave option on sensor versions
- SenseLink sensor versions for wireless group control
- Adjustable color temperature (3000 / 3500 / 4000 K)
- Adjustable brightness (lumen output) level
- Efficiency of standard versions up to 125 lm/W



MORE INFO ABOUT
PRODISC III ONLINE:



ROCKDISC III

ILLUMINATION DESIGNED TO TRANSFORM
THE NOCTURNAL IMAGE OF OUTDOOR SPACES

- High-quality, impact-resistant and weatherproof surface-mounted luminaire
- Aluminium housing with matte black finish
- SenseLink sensor versions for wireless group control
- Adjustable detection range, hold/standby time, and daylight monitoring
- Color temperature and brightness of the light can be adjusted in multiple steps



MORE INFO ABOUT
ROCKDISC III ONLINE:



PRO-AQUA IV

HIGH EFFICIENCY WATERPROOF LUMINAIRE
WITH VERSATILE FUNCTIONALITY

- Waterproof LED luminaire (IP66) made of IK08 impact-resistant polycarbonate
- Efficiency 180 lm/W for maximum energy savings
- Pre-installed through-wiring and cable glands
- Adjustable light output and CCT (3000 / 4000 / 5000 K)
- SenseLink sensor versions for wireless group control
- Flexible mounting with multiple precision drill points and bracket positions
- HACCP-conform tested

MORE INFO ABOUT
PRO-AQUA IV ONLINE:



PROLUMIA®

PROLUMIA NL

Riga 10
2993 LW BARENDRECHT
T +31 (0)180 64 54 00
E info@prolumia.nl

PROLUMIA BE

Saffierstraat 5 - Unit 10A
2200 HERENTALS
T +32 (0)14 25 07 70
E info@prolumia.be

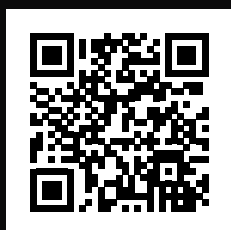
PROLUMIA CZ

Ke Slivenci 48
154 00 PRAHA 5 - LOCHKOV
T +420 222 563 003
E info@prolumia.cz

PROLUMIA DE

Feldbergstraße 57
61440 OBERURSEL
T +49 6171 8989 594
E info@prolumia.de

**MORE INFO ABOUT
SENSELINK ONLINE:**



Version: 1.0 - 2026-03

Nedelko B.V. pays the utmost attention to its catalog and reliability and actuality of the information contained therein. Despite all care, inaccuracies and omissions can not always be prevented. Nedelko B.V. is not liable for errors or inaccuracies. For the most current information please contact our sales department.