

36 120 809 Product version from 3/13/2017 to 2/20/2020



- automatic diverter
- cover plate Ø 150 mm
- WRAS

	Brushed Platinum	36 120 809-06
	Chrome	36 120 809-00
	Platinum	36 120 809-08
	Dark Chrome	36 120 809-19
	Brushed Durabronze (23kt Gold)	36 120 809-28
	Brushed Gold (PVD)	36 120 809-37
	Brushed Dark Brass (PVD)	36 120 809-39
	Brushed Bronze (PVD)	36 120 809-42
	Brushed Dark Bronze (PVD)	36 120 809-43
	Brushed Champagne (22kt Gold)	36 120 809-46
	Champagne (22kt Gold)	36 120 809-47
	Brushed Dark Platinum	36 120 809-99

Required miscellaneous

xGRID Installation track 555 mm - 12 360 970 90



Recommended miscellaneous

**xGRID Attachment set for
integrating in the dry wall
construction -** 12 340 970 90



Required miscellaneous

**Concealed single-lever mixer with
backflow preventor -** 35 021 970 90

- min. recess depth 80 mm
- max. recess depth 105 mm



Required miscellaneous

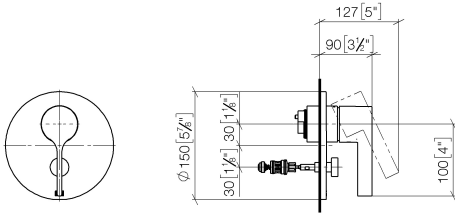
Concealed single-lever mixer - 35 020 970 90

- min. recess depth 80 mm
- max. recess depth 105 mm

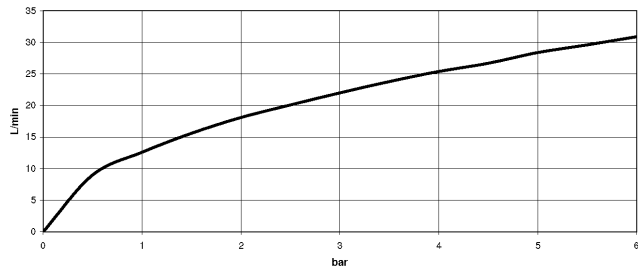


36 120 809 Product version from 3/13/2017 to 2/20/2020

mm [inches]



Flow rate chart



Codes & Standards

DIN 4109

ISO 3822

Scottish Water
Byelaws

UK Water Supply
Regulations

Ü-Zeichen



VAIA Concealed single-lever mixer with diverter - Brushed Platinum

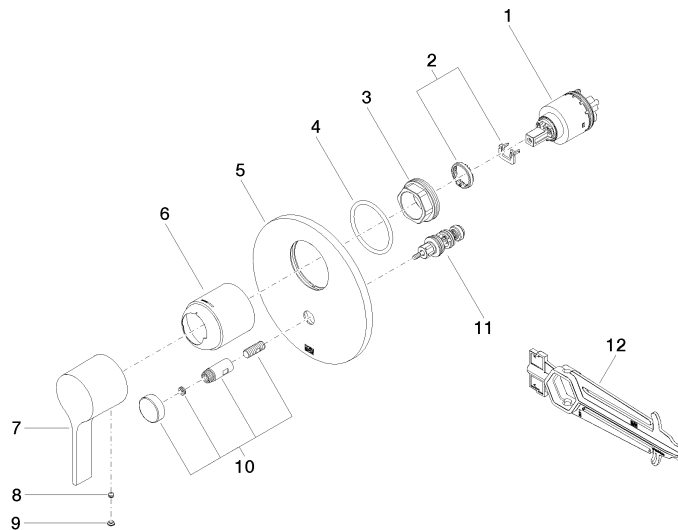
VAIA

36 120 809 Product version from 3/13/2017 to 2/20/2020

Certificates and sustainability

LGA_19	WRAS_2207	EPD-DOR-20230287 -IBA1-EN Environmental.prod uct-declarat
--------	-----------	--

36 120 809 Product version from 3/13/2017 to 2/20/2020



Spare parts list

No.	Item Number	Name	Quantity used	Delivery time
1	90 15 05 038 00 90	Single-lever mixer cartridge -	1.00	-
	Spare part can no longer be ordered, please order the replacement item			
	9015050390090	Cartridge blue Ø 40 x 75 mm -		
11	90 21 34 081 00 90	Diverter 98 x 64 x 64 mm -	1.00	14
5	09 11 02 261-06	Rosette for bath Ø 150 x 9 mm - Brushed Platinum	1.00	20
6	09 11 02 260-06	Cover Ø 50 x 58 mm - Brushed Platinum	1.00	20
8	90 31 11 063 00 90	Mounting Threaded pin with hexagon socket with cup point M5 x 4 mm -	1.00	14
3	09 24 04 448 90	Mounting Nut Ø 42 x 17 mm -	1.00	14
9	90 31 20 087 00-06	Plug with O-ring Ø 7 x 2,1 mm - Brushed Platinum	1.00	20
4	09 14 10 084 90	O-Ring EPDM 70 48 x 3,5 mm -	1.00	14
2	04 28 10 149 00 90	Single-lever mixer cartridge -	1.00	14
10	90 31 09 139 00-06	Pull rod for diverter with button Ø 26 x 47,3 mm - Brushed Platinum	1.00	20
12	90 30 09 064 00 90	Spanner for cartridge nut -	1.00	14
7	90 20 80 074 00-06	handle	1.00	-
	Spare part can no longer be ordered, please order the replacement item			