

28 002 970 Product version from 4/1/2025



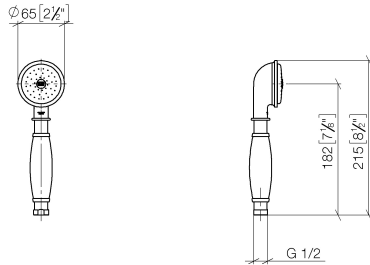
- spray head Ø 64mm
- COMPACT RAIN, max. flow rate 9 l/min (at 3 bar)
- Function from: 6 l/min
- 1/2" connection
- inherently safe from back flow
- with anti-scale system

Notes:

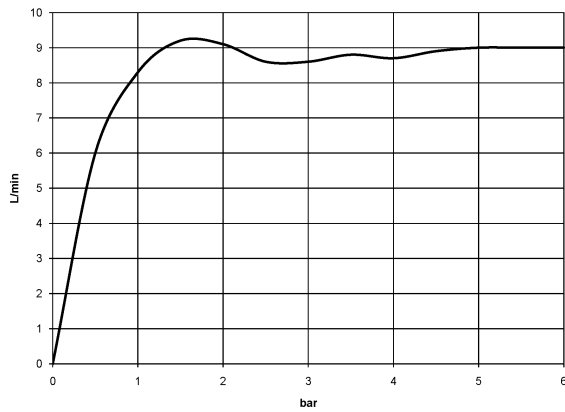
| | | |
|---|-------------------------------|---------------|
|  | Platinum | 28 002 970-08 |
|  | Chrome | 28 002 970-00 |
|  | Gold (23.9kt) | 28 002 970-01 |
|  | Brushed Platinum | 28 002 970-06 |
|  | Durabrass (23kt Gold) | 28 002 970-09 |
|  | Brushed Durabrass (23kt Gold) | 28 002 970-28 |
|  | Brushed Gold (PVD) | 28 002 970-37 |
|  | Brushed Dark Brass (PVD) | 28 002 970-39 |
|  | Brushed Bronze (PVD) | 28 002 970-42 |
|  | Brushed Chrome | 28 002 970-93 |
|  | Brushed Dark Platinum | 28 002 970-99 |

28 002 970 Product version from 4/1/2025

mm [inches]



Flow rate chart



Codes & Standards

DIN 4109

ISO 3822

Scottish Water
Byelaws

UK Water Supply
Regulations

Ü-Zeichen



MADISON Metal hand shower with porcelain insert (white) - Platinum

MADISON

28 002 970 Product version from 4/1/2025

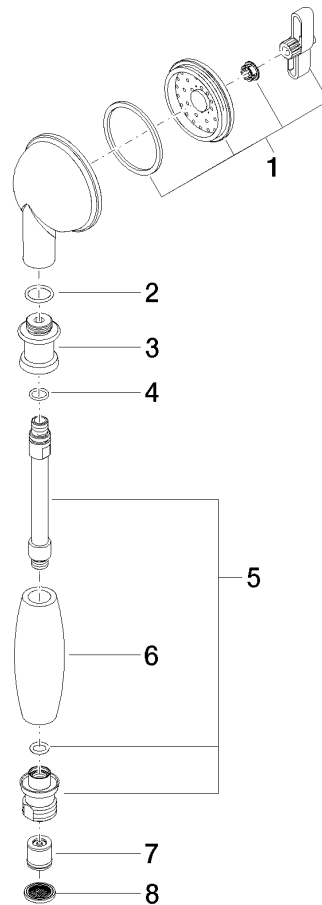
Certificates and sustainability

LGA_8

WRAS_240502

28 002 970 Product version from 4/1/2025

Parts for other finishes can be found here: [Chrome](#)



Spare parts list

| No. | Item Number | Name | Quantity used | Delivery time |
|--|--------------------|--|---------------|---------------|
| 4 | 09 14 10 042 90 | O-Ring EPDM 70 9,0 x 1,5 mm - | 1.00 | 14 |
| 3 | 09 24 04 059 20-08 | Nipple Ø 26 x 23,5 mm - Platinum | 1.00 | 54 |
| 8 | 09 23 01 039 90 | Sieve seal Ø 19 x 5,5 mm - | 1.00 | 14 |
| 2 | 09 14 10 069 90 | O-Ring EPDM 70 14,0 x 1,78 mm - | 1.00 | 14 |
| 6 | 11 167 820 60 | Handle - | 1.00 | 14 |
| 1 | 90 12 01 010 00 90 | Insert Spray filter, body spray 70 x 110 x 20 mm - | 1.00 | 14 |
| 5 | 90 28 22 033 00-08 | Connection Ø 24 x 129 mm - Platinum | 1.00 | - |
| Spare part can no longer be ordered, please order the replacement item | | | | |
| 7 | 09 23 01 077 90 | Back-flow preventer 8,7 l/min. - | 1.00 | 14 |