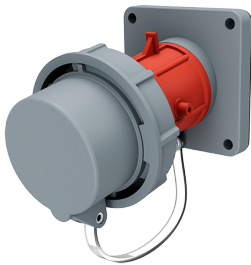


Panel mounted inlet

Part no. 1253

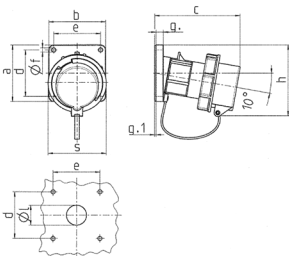


- screw terminals
- with protective cover

Technical specifications

| | |
|-----------------------|-----------------|
| Ampere | 16 A |
| Poles | 5 p |
| Voltage | 400 V |
| Clock position | 6 h |
| Hertz | 50-60 Hz |
| Connection technology | Screw terminals |
| Contact | standard |
| Protection type | IP67 |
| Weight | 302 g |
| Certifications | VDE, EAC |

Drawing



| Drawing | Amp. | 16 | | | 32 | | | 63 | | | | |
|------------|------|--------------------------|------|------|-----|-----|-----|-----|-----|-----|---|---|
| | | Poles | | 3 | 4 | 5 | 3 | 4 | 5 | 3 | 4 | 5 |
| 2 MB 62 | | | | | | | | | | | | |
| Dim. in mm | | a | 85 | 85 | 85 | 85 | 85 | 108 | 108 | 108 | | |
| | | b | 85 | 85 | 85 | 85 | 85 | 101 | 101 | 101 | | |
| | | c | 132 | 132 | 131 | 131 | 137 | 164 | 164 | 164 | | |
| | | d | 70 | 70 | 70 | 70 | 70 | 85 | 85 | 85 | | |
| | | e | 70 | 70 | 70 | 70 | 70 | 77 | 77 | 77 | | |
| | | f | 6.3 | 6.3 | 6.3 | 6.3 | 6.3 | 6.5 | 6.5 | 6.5 | | |
| | | g. | 11 | 11 | 11 | 11 | 11 | 12 | 12 | 12 | | |
| | | g.1 | 2 | 2 | 2 | 2 | 2 | 2 | 2 | 2 | | |
| | | h | 100 | 107 | 108 | 108 | 111 | 130 | 130 | 130 | | |
| | | s | 70 | 87 | 94 | 94 | 102 | 114 | 114 | 114 | | |
| | | l | 30 | 30 | 30 | 30 | 30 | 40 | 40 | 40 | | |
| | | Terminal for cond. cross | 1 | 1 | 2,5 | 2,5 | 2,5 | 6 | 6 | 6 | | |
| | | section (mm²) min.-max. | -2,5 | -2,5 | -6 | -6 | -6 | -16 | -16 | -16 | | |