

## Panel mounted inlet

Part no. 461

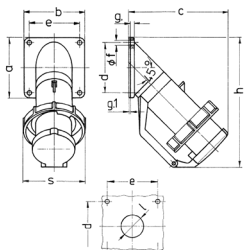


- screw terminals
- with hinged lid

## Technical specifications

|                       |                 |
|-----------------------|-----------------|
| Ampere                | 16 A            |
| Poles                 | 5 p             |
| Voltage               | 230 V           |
| Clock position        | 9 h             |
| Hertz                 | 50-60 Hz        |
| Connection technology | Screw terminals |
| Contact               | standard        |
| Protection type       | IP67            |
| Weight                | 320 g           |

## Drawing



| Drawing    | Amp.   | 16      |     |     |     | 32  |     | 63 |  |
|------------|--|---------|-----|-----|-----|-----|-----|----|--|
|            |  | 2 MB 40 |     | 3   | 4   | 5   | 4   | 5  |  |
| Dim. in mm | Poles  | 5       | 3   | 4   | 5   | 4   | 5   |    |  |
|            | a  | 85      | 85  | 85  | 85  | 114 | 114 |    |  |
|            | b  | 85      | 85  | 85  | 85  | 114 | 114 |    |  |
|            | c  | 141     | 141 | 141 | 144 | 180 | 180 |    |  |
|            | d  | 70      | 70  | 70  | 70  | 90  | 90  |    |  |
|            | e  | 70      | 70  | 70  | 70  | 90  | 90  |    |  |
|            | f  | 6.2     | 6.2 | 6.2 | 6.2 | 6.2 | 6.2 |    |  |
|            | g  | 6       | 6   | 6   | 6   | 6   | 6   |    |  |
|            | g-1  | 2       | 2   | 2   | 2   | 2   | 2   |    |  |
|            | h  | 181     | 181 | 181 | 188 | 242 | 242 |    |  |
|            | s  | 86      | 93  | 93  | 100 | 113 | 113 |    |  |
|            | l  | 30      | 30  | 30  | 30  | 40  | 40  |    |  |
|            | Terminal for cond. cross section (mm²) min.-max. | 1       | 2.5 | 2.5 | 2.5 | 4   | 4   |    |  |
|            |  | -2.5    | -6  | -6  | -6  | -16 | -16 |    |  |