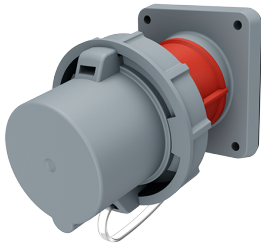


Panel mounted inlet

Part no. 1259

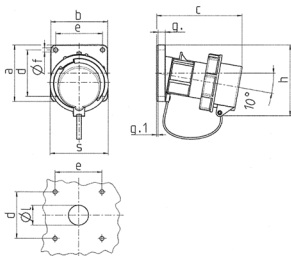


- screw terminals
- with protective cover

Technical specifications

Ampere	63 A
Poles	5 p
Voltage	400 V
Clock position	6 h
Hertz	60-50 Hz
Connection technology	Screw terminals
Contact	standard
Protection type	IP67
Weight	705 g
Certifications	EAC, VDE

Drawing



Drawing	Amp.	16			32			63		
		Poles			3	4	5	3	4	5
2 MB 62										
Dim. in mm		a	b	c	d	e	f	g	g.1	h
		85	85	85	85	85	108	108	108	101
		85	85	85	85	85	101	101	101	101
		132	132	131	131	137	164	164	164	85
		70	70	70	70	70	85	85	85	77
		70	70	70	70	70	77	77	77	6.5
		6.3	6.3	6.3	6.3	6.3	6.5	6.5	6.5	12
		11	11	11	11	11	12	12	12	2
		2	2	2	2	2	2	2	2	100
		100	107	108	108	111	130	130	130	70
		70	87	94	94	102	114	114	114	30
		30	30	30	30	30	40	40	40	1
		1	1	2,5	2,5	2,5	6	6	6	-2,5
		Terminal for cond. cross section (mm ²) min.-max.	-2,5	-2,5	-6	-6	-6	-16	-16	-16